

MOLDED NUTS - MH Series

See Craftech Industries' J Series on page 104, K Series on page 105 and L Series on page 106 for additional MOLDED NUTS.
For Nylon 6/6 MOLDED NUTS, see pages 109-115.

*Available in other materials. See material list in index.
Other sizes available on request.
Dimensions may vary with material.

*Available in the following materials:

Material Code

No.	Material Name
-6	Ultem® 2300, (black)
-48	Ryton®, PPS, 40% Short Glass-filled
-74	Isoplast™, 40% Long Glass Fiber, (natural)

Material Code

No.	Material Name
-77	Ultem® 2300, (natural)
-81	Isoplast™, 40% Long Glass Fiber, (gray)
-108	Polypropylene, 30% Glass-filled
-228	Radel® AG330, 30% Glass-filled

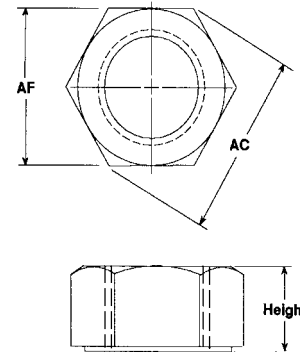
Material Code

No.	Material Name
-520	PPS, 30% Carbon Fiber, (black)
-820	Isoplast™, 30% Short Glass Fiber, (gray)
-824	Isoplast™, 30% Short Glass Fiber, (natural)

MOLDED HEX NUTS

Part No. MHX1800 - (Size Code No.) - (Material Code No.)

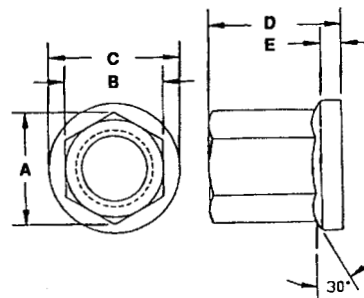
Size Code No.	Thread Size	AF	AC	Height	Size Code No.	Thread Size	AF	AC	Height
-1	4-40	1/4	0.289	0.098	-13	1/2-13	3/4	0.866	7/16
-2	4-48	1/4	0.289	0.098	-14	1/2-20	3/4	0.866	7/16
-3	6-32	5/16	0.361	0.114	-15	5/8-11	15/16	1.083	35/64
-4	8-32	11/32	0.397	0.130	-16	5/8-18	15/16	1.083	35/64
-5	10-32	3/8	0.433	0.130	-17	3/4-10	1 1/8	1.299	41/64
-6	10-24	3/8	0.433	0.130	-18	3/4-16	1 1/8	1.299	41/64
-7	1/4-20	7/16	0.505	7/32	-19	7/8-9	15/16	1.516	3/4
-8	1/4-28	7/16	0.505	7/32	-20	7/8-14	15/16	1.516	3/4
-9	5/16-18	1/2	0.577	17/64	-21	1-8	1 1/2	1.732	55/64
-10	5/16-24	1/2	0.577	17/64	-22	1-12	1 1/2	1.732	55/64
-11	3/8-16	9/16	0.650	21/64	-23	1-14	1 1/2	1.732	55/64
-12	3/8-24	9/16	0.650	21/64					



MOLDED FLANGED NUTS

Part No. MHX1700 - (Size Code No.) - (Material Code No.)

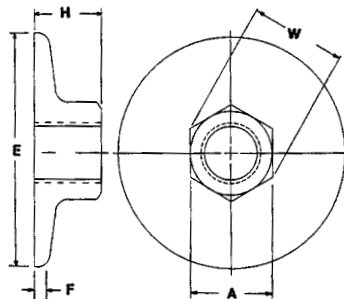
Size Code No.	Thread Size	A	B	C	D	E
-1	3/8-16	.635	.555	.745	.750	.120
-2	3/8-24	.635	.555	.745	.750	.120
-5	1/2-13	.840	.730	1.000	.855	.130
-6	1/2-20	.840	.730	1.000	.855	.130
-7	5/8-11	1.050	.920	1.250	1.220	.130
-9	3/4-10	1.285	1.120	1.950	1.590	.130
-12	1-8	1.750	1.475	2.000	1.750	.188



MOLDED CLAMP NUTS

Part No. MHC18001 - (Size Code No.) - (Material Code No.)

Size Code No.	Thread Size	Size Code No.	Thread Size
-1	3/8-16	-6	1/2-20
-2	3/8-24	-7	1/4NPT
-3	7/16-14	-8	3/8NPT
-4	7/16-20	-10	1/4NPS
-5	1/2-13	-11	3/8NPS



A W H F E
1.00 1.35 .605 .187 2.00
Tolerance on all dimensions +/- .050

MOLDED NUTS - J Series

See *Craftech Industries' MH Series on page 103, K Series on page 105 and L Series on page 106 for additional MOLDED NUTS. For Nylon 6/6 MOLDED NUTS, see pages 109-115.*

*Available in other materials. See material list in index.
Other sizes available on request.
Dimensions may vary with material.

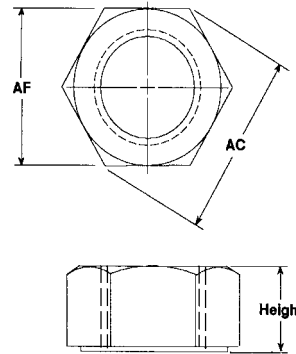
*Available in the following materials:

Material Code No.	Material Name	Material Code No.	Material Name	Material Code No.	Material Name
-5	Ultem® 1000	-60	Nylon 6/6, 30% Short Glass-filled	-226	Radel® A200, Polyethersulfone
-14	ABS	-90	PEEK®, 30% Short Glass-filled, (natural)	-229	Radel® R5000, Polyphenylsulfone
-35	Noryl®	-194	Nylon 46, 30% Glass-filled, Heat Stabilized	-231	Radel® R5100 NT15, Polyphenylsulfone
-46	Polycarbonate, (clear)	-195	Nylon 46, 30% Glass-filled, Heat Stabilized, Fire Retardant		

MOLDED HEX NUTS

Part No. J400 - (Size Code No.) - (Material Code No.)

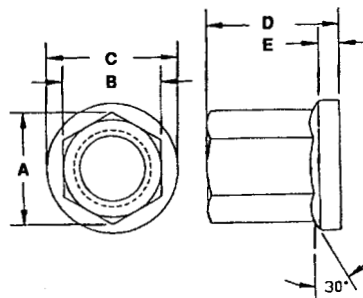
Size Code No.	Thread Size	AF	AC	Height	Size Code No.	Thread Size	AF	AC	Height
-1	4-40	1/4	0.289	0.098	-13	1/2-13	3/4	0.866	7/16
-2	4-48	1/4	0.289	0.098	-14	1/2-20	3/4	0.866	7/16
-3	6-32	5/16	0.361	0.114	-15	5/8-11	15/16	1.083	35/64
-4	8-32	11/32	0.397	0.130	-16	5/8-18	15/16	1.083	35/64
-5	10-32	3/8	0.433	0.130	-17	3/4-10	1 1/8	1.299	41/64
-6	10-24	3/8	0.433	0.130	-18	3/4-16	1 1/8	1.299	41/64
-7	1/4-20	7/16	0.505	7/32	-19	7/8-9	1 5/16	1.516	3/4
-8	1/4-28	7/16	0.505	7/32	-20	7/8-14	1 5/16	1.516	3/4
-9	5/16-18	1/2	0.577	17/64	-21	1-8	1 1/2	1.732	55/64
-10	5/16-24	1/2	0.577	17/64	-22	1-12	1 1/2	1.732	55/64
-11	3/8-16	9/16	0.650	21/64	-23	1-14	1 1/2	1.732	55/64
-12	3/8-24	9/16	0.650	21/64					



MOLDED FLANGED NUTS

Part No. J401 - (Size Code No.) - (Material Code No.)

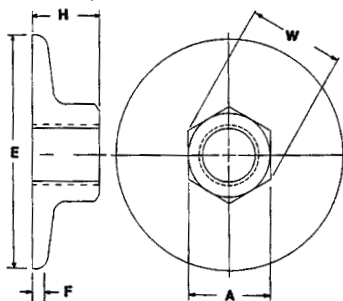
Size Code No.	Thread Size	A	B	C	D	E
-1	3/8-16	.635	.555	.745	.750	.120
-2	3/8-24	.635	.555	.745	.750	.120
-5	1/2-13	.840	.730	1.000	.855	.130
-6	1/2-20	.840	.730	1.000	.855	.130
-7	5/8-11	1.050	.920	1.250	1.220	.130
-9	3/4-10	1.285	1.120	1.950	1.590	.130
-12	1-8	1.750	1.475	2.000	1.750	.188



MOLDED CLAMP NUTS

Part No. J402 - (Size Code No.) - (Material Code No.)

Size Code No.	Thread Size	Size Code No.	Thread Size
-1	3/8-16	-6	1/2-20
-2	3/8-24	-7	1/4NPT
-3	7/16-14	-8	3/8NPT
-4	7/16-20	-10	1/4NPS
-5	1/2-13	-11	3/8NPS



A W H F E
1.00 1.35 .605 .187 2.00
Tolerance on all dimensions +/- .050

MOLDED NUTS - K Series

See Craftech Industries' MH Series on page 103, J Series on page 104 and L Series on page 106 for additional MOLDED NUTS.
For Nylon 6/6 MOLDED NUTS, see pages 109-115.

*Available in other materials. See material list in index.
Other sizes available on request.
Dimensions may vary with material.

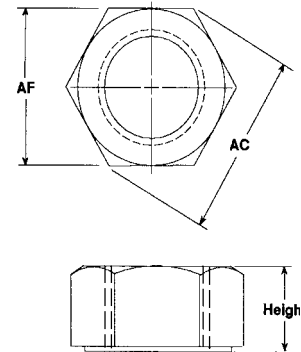
*Available in the following materials:

Material Code No.	Material Name	Material Code No.	Material Name
-11	Polypropylene	-37	PVDF
-24	Delrin®	-41	Halar®
-25	Delrin® AF		

MOLDED HEX NUTS

Part No. K400 - (Size Code No.) - (Material Code No.)

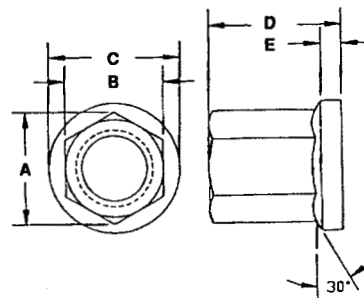
Size Code No.	Thread Size	AF	AC	Height	Size Code No.	Thread Size	AF	AC	Height
-1	4-40	1/4	0.289	0.098	-13	1/2-13	3/4	0.866	7/16
-2	4-48	1/4	0.289	0.098	-14	1/2-20	3/4	0.866	7/16
-3	6-32	5/16	0.361	0.114	-15	5/8-11	15/16	1.083	35/64
-4	8-32	11/32	0.397	0.130	-16	5/8-18	15/16	1.083	35/64
-5	10-32	3/8	0.433	0.130	-17	3/4-10	1 1/8	1.299	41/64
-6	10-24	3/8	0.433	0.130	-18	3/4-16	1 1/8	1.299	41/64
-7	1/4-20	7/16	0.505	7/32	-19	7/8-9	15/16	1.516	3/4
-8	1/4-28	7/16	0.505	7/32	-20	7/8-14	15/16	1.516	3/4
-9	5/16-18	1/2	0.577	17/64	-21	1-8	1 1/2	1.732	55/64
-10	5/16-24	1/2	0.577	17/64	-22	1-12	1 1/2	1.732	55/64
-11	3/8-16	9/16	0.650	21/64	-23	1-14	1 1/2	1.732	55/64
-12	3/8-24	9/16	0.650	21/64					



MOLDED FLANGED NUTS

Part No. K401 - (Size Code No.) - (Material Code No.)

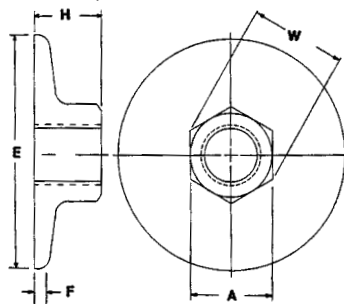
Size Code No.	Thread Size	A	B	C	D	E
-1	3/8-16	.635	.555	.745	.750	.120
-2	3/8-24	.635	.555	.745	.750	.120
-5	1/2-13	.840	.730	1.000	.855	.130
-6	1/2-20	.840	.730	1.000	.855	.130
-7	5/8-11	1.050	.920	1.250	1.220	.130
-9	3/4-10	1.285	1.120	1.950	1.590	.130
-12	1-8	1.750	1.475	2.000	1.750	.188



MOLDED CLAMP NUTS

Part No. K402 - (Size Code No.) - (Material Code No.)

Size Code No.	Thread Size	Size Code No.	Thread Size
-1	3/8-16	-6	1/2-20
-2	3/8-24	-7	1/4NPT
-3	7/16-14	-8	3/8NPT
-4	7/16-20	-10	1/4NPS
-5	1/2-13	-11	3/8NPS



A W H F E
1.00 1.35 .605 .187 2.00
Tolerance on all dimensions +/- .050

MOLDED NUTS - L Series

See *Craftech Industries' MH Series on page 103, J Series on page 104 and K Series on page 105 for additional MOLDED NUTS*
 For Nylon 6/6 MOLDED NUTS, see pages 109-115.

*Available in other materials. See material list in index.
 Other sizes available on request.
 Dimensions may vary with material.

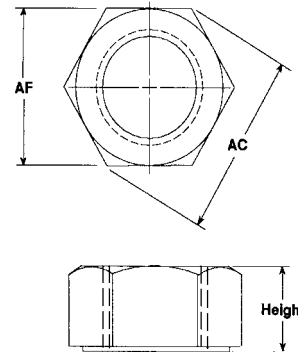
*Available in the following materials:

Material Code No.	Material Name
-15	PEEK™

MOLDED HEX NUTS

Part No. L400 - (Size Code No.) - (Material Code No.)

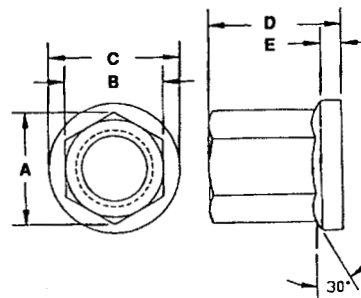
Size Code No.	Thread Size	AF	AC	Height	Size Code No.	Thread Size	AF	AC	Height
-1	4-40	1/4	0.289	0.098	-13	1/2-13	3/4	0.866	7/16
-2	4-48	1/4	0.289	0.098	-14	1/2-20	3/4	0.866	7/16
-3	6-32	5/16	0.361	0.114	-15	5/8-11	15/16	1.083	35/64
-4	8-32	11/32	0.397	0.130	-16	5/8-18	15/16	1.083	35/64
-5	10-32	3/8	0.433	0.130	-17	3/4-10	1 1/8	1.299	41/64
-6	10-24	3/8	0.433	0.130	-18	3/4-16	1 1/8	1.299	41/64
-7	1/4-20	7/16	0.505	7/32	-19	7/8-9	1 5/16	1.516	3/4
-8	1/4-28	7/16	0.505	7/32	-20	7/8-14	1 5/16	1.516	3/4
-9	5/16-18	1/2	0.577	17/64	-21	1-8	1 1/2	1.732	55/64
-10	5/16-24	1/2	0.577	17/64	-22	1-12	1 1/2	1.732	55/64
-11	3/8-16	9/16	0.650	21/64	-23	1-14	1 1/2	1.732	55/64
-12	3/8-24	9/16	0.650	21/64					



MOLDED FLANGED NUTS

Part No. L401 - (Size Code No.) - (Material Code No.)

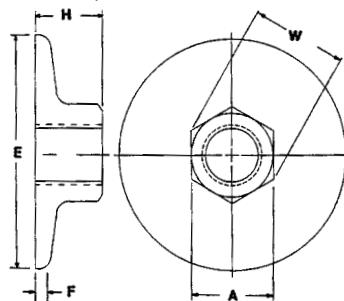
Size Code No.	Thread Size	A	B	C	D	E
-1	3/8-16	.635	.555	.745	.750	.120
-2	3/8-24	.635	.555	.745	.750	.120
-5	1/2-13	.840	.730	1.000	.855	.130
-6	1/2-20	.840	.730	1.000	.855	.130
-7	5/8-11	1.050	.920	1.250	1.220	.130
-9	3/4-10	1.285	1.120	1.950	1.590	.130
-12	1-8	1.750	1.475	2.000	1.750	.188



MOLDED CLAMP NUTS

Part No. L402 - (Size Code No.) - (Material Code No.)

Size Code No.	Thread Size	Size Code No.	Thread Size
-1	3/8-16	-6	1/2-20
-2	3/8-24	-7	1/4NPT
-3	7/16-14	-8	3/8NPT
-4	7/16-20	-10	1/4NPS
-5	1/2-13	-11	3/8NPS



A W H F E
 1.00 1.35 .605 .187 2.00
 Tolerance on all dimensions +/- .050

MOLDED METRIC HEX NUTS

For Nylon 6/6 MOLDED NUTS, see pages 109-115.

*Available in other materials. See material list in index.
Other sizes available on request.
Dimensions may vary with material.

MH Series

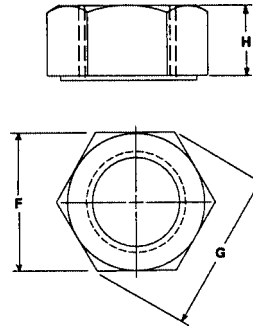
*Available in the following materials:

Material Code No.	Material Name	Material Code No.	Material Name	Material Code No.	Material Name
-6	Ultem® 2300, (black)	-77	Ultem® 2300, (natural)	-520	PPS, 30% Carbon Fiber, (black)
-48	Ryton®, PPS, 40% Short Glass-filled	-81	Isoplast™, 40% Long Glass Fiber, (gray)	-820	Isoplast™, 30% Short Glass Fiber, (gray)
-74	Isoplast™, 40% Long Glass Fiber, (natural)	-108	Polypropylene, 30% Glass-filled	-824	Isoplast™, 30% Short Glass Fiber, (natural)
		-228	Radel® AG330, 30% Glass-filled		

MOLDED METRIC HEX NUTS

Part No. MHX2000 - (Size Code No.) - (Material Code No.)

Size Code No.	Thread Size	F	G	H
-7	M6 x 1.00	9.78 - 10	min. 11.05	4.9 - 5.2
-8	M8 x 1.25	12.73 - 13	min. 14.38	7.5 - 7.14
-9	M10 x 1.50	15.73 - 16	min. 17.77	8.94 - 9.3
-10	M12 x 1.75	17.73 - 18	min. 20.03	11.57 - 12



J Series

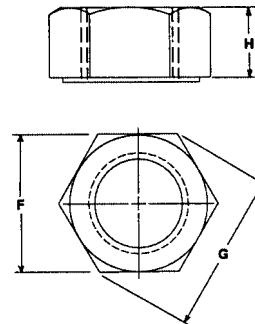
*Available in the following materials:

Material Code No.	Material Name	Material Code No.	Material Name	Material Code No.	Material Name
-5	Ultem® 1000	-60	Nylon 6/6, 30% Short Glass-filled	-226	Radel® A200, Polyethersulfone
-14	ABS	-90	PEEK™, 30% Short Glass-filled, (natural)	-229	Radel® R5000, Polyphenylsulfone
-35	Noryl®	-194	Nylon 46, 30% Glass-filled, Heat Stabilized	-231	Radel® R5100 NT15, Polyphenylsulfone
-46	Polycarbonate, (clear)	-195	Nylon 46, 30% Glass-filled, Heat Stabilized, Fire Retardant		

MOLDED METRIC HEX NUTS

Part No. J2000 - (Size Code No.) - (Material Code No.)

Size Code No.	Thread Size	F	G	H
-7	M6 x 1.00	9.78 - 10	min. 11.05	4.9 - 5.2
-8	M8 x 1.25	12.73 - 13	min. 14.38	7.5 - 7.14
-9	M10 x 1.50	15.73 - 16	min. 17.77	8.94 - 9.3
-10	M12 x 1.75	17.73 - 18	min. 20.03	11.57 - 12



MOLDED METRIC HEX NUTS (continued)

K Series

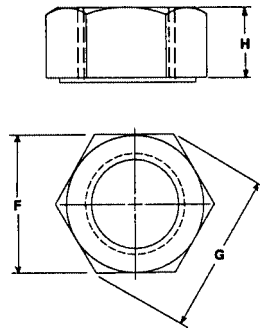
*Available in the following materials:

Material Code No.	Material Name	Material Code No.	Material Name
-11	Polypropylene	-37	PVDF
-24	Delrin®	-41	Halar®
-25	Delrin® AF		

MOLDED METRIC HEX NUTS

Part No. K2000 - (Size Code No.) - (Material Code No.)

Size Code No.	Thread Size	F	G	H
-7	M6 x 1.00	9.78 - 10	min. 11.05	4.9 - 5.2
-8	M8 x 1.25	12.73 - 13	min. 14.38	7.5 - 7.14
-9	M10 x 1.50	15.73 - 16	min. 17.77	8.94 - 9.3
-10	M12 x 1.75	17.73 - 18	min. 20.03	11.57 - 12



L Series

*Available in the following materials:

Material Code No.	Material Name
-15	PEEK™

MOLDED METRIC HEX NUTS

Part No. L2000 - (Size Code No.) - (Material Code No.)

Size Code No.	Thread Size	F	G	H
-7	M6 x 1.00	9.78 - 10	min. 11.05	4.9 - 5.2
-8	M8 x 1.25	12.73 - 13	min. 14.38	7.5 - 7.14
-9	M10 x 1.50	15.73 - 16	min. 17.77	8.94 - 9.3
-10	M12 x 1.75	17.73 - 18	min. 20.03	11.57 - 12

