

MOLDED NYLON NUTS and POLYCARBONATE NUTS

*Available in the following materials:

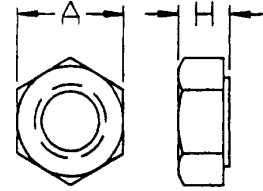
Material Code No.	Material Name
-18	Nylon 6/6, (natural)
-78	Nylon 6/6, (black)

*Available in other materials. See materials list in index.
Other sizes available on request.

NYLON HEX NUT

Part No. G100 - (Size Code No.) - (Material Code No.)

Size Code No.	Thread Size	A	H	Size Code No.	Thread Size	A	H
-1	2-56	.180	.070	-14	3/8-24	.560	.330
-2	3-48	.180	.070	-140	3/8-32	.560	.330
-3	4-40	.250	.100	-1400	7/16-14	.685	.380
-4	6-32	.305	.120	-15	7/16-24	.685	.380
-5	6-40	.305	.120	-16	7/16-20	.685	.380
-6	8-32	.335	.130	-17	1/2-13	.750	.430
-7	10-24	.365	.135	-18	1/2-20	.750	.430
-8	10-32	.365	.135	-19	5/8-11	.925	.550
-9	12-24	.425	.207	-20	5/8-18	.925	.550
-10	1/4-20	.433	.233	-200	11/16-27	1.00	.250
-11	1/4-28	.433	.235	-21	3/4-10	1.10	.640
-12	5/16-18	.500	.270	-22	7/8-9	1.28	.750
-120	5/16-24	.500	.270	-23	1-8	1.47	.870
-13	3/8-16	.560	.330				



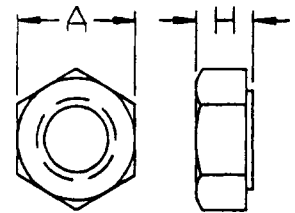
Tolerance on all dimensions +/- .010

NYLON SPECIAL HEX NUT

(G101's are thicker than G100's.)

Part No. G101 - (Size Code No.) - (Material Code No.)

Size Code No.	Thread Size	A	H	Size Code No.	Thread Size	A	H
-1	2-56	.180	.090	-1	2-56	.180	.090
-2	4-40	.250	.124	-2	4-40	.250	.124
-3	6-32	.305	.146	-3	6-32	.305	.146
-4	8-32	.340	.170	-4	8-32	.340	.170
-5	10-24	.365	.196	-5	10-24	.365	.196
-6	10-32	.365	.196	-6	10-32	.365	.196
-7	1/4-20	.425	.258	-7	1/4-20	.425	.258

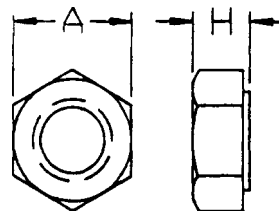


Tolerance on all dimensions +/- .010

POLYCARBONATE HEX NUT

Part No. GP100 - (Size Code No.) - (Material Code No.)

Size Code No.	Thread Size	A	H
-3	2-56	.180	.090
-4	6-32	.305	.120
-6	8-32	.335	.130
-8	10-32	.365	.135



Tolerance on all dimensions +/- .010

MOLDED NYLON NUTS (continued)

*Available in the following materials:

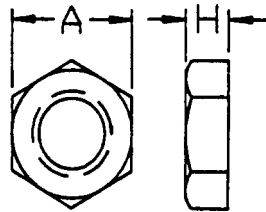
Material Code No.	Material Name
-18	Nylon 6/6, (natural)
-78	Nylon 6/6, (black)

*Available in other materials. See materials list in index.
Other sizes available on request.

NYLON HEX JAM NUT

Part No. G102 - (Size Code No.) - (Material Code No.)

Size Code No.	Thread Size	A	H
-1	5/16-18	.500	.190
-2	5/16-24	.500	.190
-3	3/8-16	.500	.125
-30	3/8-16	.670	.218
-4	3/8-24	.500	.125
-5	3/8-32	.500	.125
-6	7/16-14	.687	.375
-7	7/16-20	.687	.250
-70	15/32-32	.625	.125
-8	1/2-13	.687	.220
-9	1/2-24	.687	.220
-10	1/2-28	.660	.125
-100	9/16-18	.750	.250
-1000	9/16-24	.750	.250
-1001	5/8-11	.930	.375
-101	5/8-18	.937	.375
-11	3/4-10	1.12	.250
-110	3/4-16	1.12	.250
-12	3/4-27	1.00	.125
-120	7/8-14	1.25	.340
-1200	7/8-20	1.00	.125
-121	1-8	1.48	.410
-1210	1/8-27 NPT	.560	.110
-122	1/4-18 NPT	.740	.187
-13	3/8-18 NPT	1.00	.280
-14	1/2-14 NPT	1.25	.340
-15	3/4-14 NPT	1.48	.410
-150	1/4-18 NPS	.687	.225
-16	3/8-18 NPS	1.00	.280
-17	1/2-14 NPS	1.25	.340
-18	3/4-14 NPS	1.48	.410

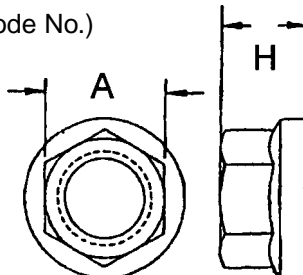


Tolerance on all dimensions +/- .010

NYLON HEX FLANGE NUT

Part No. G113 - (Size Code No.) - (Material Code No.)

Size Code No.	Thread Size	A	H
-1	10-32	.364	.208
-2	1/4-20	.428	.226



Tolerance on all dimensions +/- .010

MOLDED NYLON NUTS (continued)

*Available in the following materials:

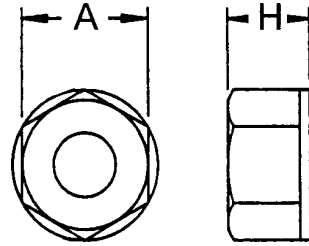
Material Code No.	Material Name
-18	Nylon 6/6, (natural)
-78	Nylon 6/6, (black)

*Available in other materials. See materials list in index.
Other sizes available on request.

NYLON LOCK NUT
SELF-THREADING

Part No. **G103** - (Size Code No.) - (Material Code No.)

Size Code No.	Thread Size	A	H
-1	2-56	.180	.140
-2	4-40	.250	.200
-3	6-32	.305	.200
-4	8-32	.335	.230
-5	10-24	.365	.250
-6	10-32	.365	.250
-7	1/4-20	.425	.275

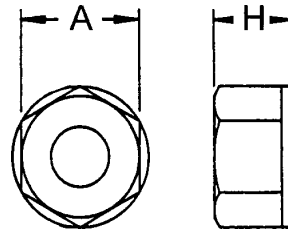


Tolerance on all dimensions +/- .010

NYLON LOCK NUT

Part No. **G104** - (Size Code No.) - (Material Code No.)

Size Code No.	Thread Size	A	H
-1	2-56	.180	.140
-2	4-40	.250	.200
-3	6-32	.305	.200
-4	8-32	.335	.230
-5	10-24	.365	.250
-6	10-32	.365	.250
-7	1/4-20	.425	.275

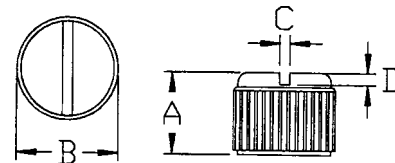


Tolerance on all dimensions +/- .010

NYLON SLOTTED THUMB NUT

Part No. **G105** - (Size Code No.) - (Material Code No.)

Size Code No.	Thread Size	A	B	C	D
-1	4-40	.280	.317	.039	.045
-2	6-32	.334	.348	.044	.051
-3	8-32	.378	.381	.049	.059
-4	10-24	.357	.400	.056	.068
-5	10-32	.357	.400	.056	.068
-6	1/4-20	.370	.478	.070	.088



Tolerance on all dimensions +/- .010

MOLDED NYLON NUTS (continued)

*Available in the following materials:

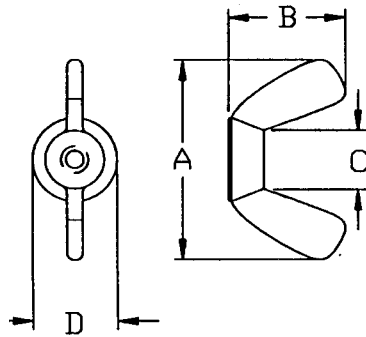
Material Code No.	Material Name
-18	Nylon 6/6, (natural)
-78	Nylon 6/6, (black)

*Available in other materials. See materials list in index.
Other sizes available on request.

NYLON WING NUT

Part No. **G107** - (Size Code No.) - (Material Code No.)

Size Code No.	Thread Size	A	B	C	D
-1	4-40	.90	.48	.23	.40
-2	6-32	.90	.48	.23	.40
-3	8-32	.90	.48	.23	.40
-4	10-24	.90	.48	.23	.40
-5	10-32	.90	.48	.23	.40
-6	10-24	1.10	.63	.30	.56
-7	10-32	1.10	.63	.30	.56
-8	1/4-20	1.10	.63	.30	.56
-9	1/4-28	1.10	.63	.30	.56
-10	1/4-20	1.36	.71	.36	.65
-11	1/4-28	1.36	.71	.36	.65
-12	5/16-18	1.38	.72	.36	.65
-13	3/8-16	1.38	.72	.36	.65
-130	3/8-24	.140	.720	.36	.64
-14	7/16-14	1.76	.90	.58	.85
-15	1/2-13	1.76	.90	.58	.85
-16	9/16-12	1.76	.90	.58	.85

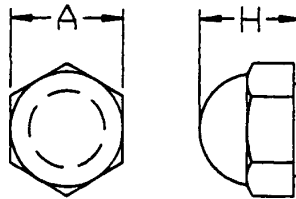


Tolerance on all dimensions +/- .010

NYLON CAP NUT

Part No. **GN106** - (Size Code No.) - (Material Code No.)

Size Code No.	Thread Size	A	H
-1	4-40	.250	.280
-2	6-32	.305	.345
-3	8-32	.330	.375
-4	10-24	.365	.400
-5	10-32	.365	.400
-6	1/4-20	.425	.475
-7	1/4-28	.425	.475
-8	5/16-18	.500	.530
-80	5/16-24	.500	.530
-9	3/8-16	.560	.620
-90	3/8-24	.560	.620
-10	1/2-13	.750	.810
-100	1/2-20	.750	.810
-11	5/8-11	.935	.970



Tolerance on all dimensions +/- .010

*Available in the following materials:

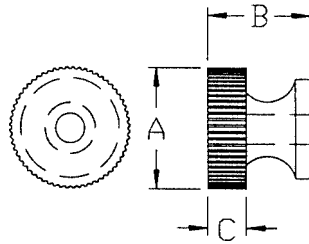
Material Code No.	Material Name
-18	Nylon 6/6, (natural)
-78	Nylon 6/6, (black)

*Available in other materials. See materials list in index.
Other sizes available on request.

NYLON KNURLED THUMB NUTS

Part No. G108 - (Size Code No.) - (Material Code No.)

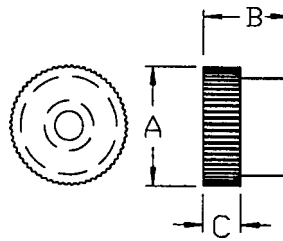
Size Code No.	Thread Size	A	B	C
-1	4-40	.300	.280	.125
-2	6-32	.360	.275	.125
-3	8-32	.425	.305	.140
-4	10-24	.425	.325	.140
-5	10-32	.425	.325	.140
-6	1/4-20	.540	.365	.155
-7	5/16-18	.612	.400	.170
-8	5/16-24	.612	.400	.170



Tolerance on all dimensions +/- .010

Part No. G109 - (Size Code No.) - (Material Code No.)

Size Code No.	Thread Size	A	B	C
-1	4-40	.300	.280	.120
-2	6-32	.360	.275	.125
-3	8-32	.425	.305	.140
-4	10-24	.425	.325	.140
-5	10-32	.425	.325	.140
-6	1/4-20	.540	.365	.155
-7	5/16-18	.612	.385	.171
-8	3/8-16	.687	.430	.187
-9	1/2-13	.750	.768	.203



Tolerance on all dimensions +/- .010

MOLDED NYLON METRIC NUTS

*Available in the following materials:

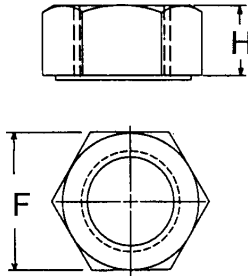
Material Code No.	Material Name
-18	Nylon 6/6, (natural)
-78	Nylon 6/6, (black)

*Available in other materials. See materials list in index.
Other sizes available on request.

NYLON METRIC HEX NUTS

Part No. GM114 - (Size Code No.) - (Material Code No.)

Size Code No.	Thread Size	F	H
-1	M2 x 0,4	3,90	1,20
-2	M2,5 x 0,45	4,90	1,80
-3	M3 x 0,5	5,40	2,20
-4	M3,5 x 0,6	6,90	2,70
-5	M4 x 0,7	6,90	3,00
-6	M5 x 0,8	7,90	4,30
-7	M6 x 1,0	10,00	5,40
-8	M8 x 1,25	12,90	6,40
-9	M10 x 1,50	14,80	9,80
-10	M12 x 1,75	17,74	10,54

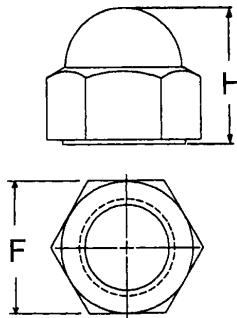


Tolerance on all dimensions +/- .26mm

NYLON METRIC CAP NUTS

Part No. GM115 - (Size Code No.) - (Material Code No.)

Size Code No.	Thread Size	F	H
-1	M4 x 0,70	7,00	8,00
-2	M5 x 0,80	8,00	10,00
-3	M6 x 1,00	10,00	12,00
-4	M8 x 1,25	13,00	15,00
-5	M10 x 1,50	17,00	18,00
-6	M12 x 1,75	18,90	20,50
-7	M16 x 2,00	23,70	24,80
-8	M20 x 2,50	26,70	29,10



Tolerance on all dimensions +/- .26mm

MOLDED NYLON METRIC NUTS (continued)

*Available in the following materials:

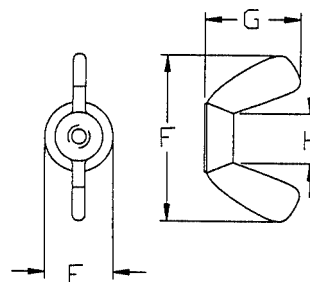
Material Code No.	Material Name
-18	Nylon 6/6, (natural)
-78	Nylon 6/6, (black)

*Available in other materials. See materials list in index.
Other sizes available on request.

NYLON METRIC WING NUTS

Part No. GM118 - (Size Code No.) - (Material Code No.)

Size Code No.	Thread Size	F	G	H	E
-100	M3 x 0,50	22,90	12,20	5,80	10,20
-1	M4 x 0,70	22,80	12,20	5,80	10,20
-2	M5 x 0,80	22,80	12,20	5,80	10,20
-3	M6 x 1,00	28,00	16,00	7,60	14,20
-4	M8 x 1,25	35,10	18,30	9,10	16,50
-5	M10 x 1,50	35,10	18,30	9,10	16,50
-6	M12 x 1,70	44,70	22,70	15,00	21,10

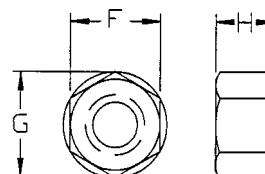


Tolerance on all dimensions +/- .26mm

NYLON METRIC LOCK NUTS

Part No. GM119 - (Size Code No.) - (Material Code No.)

Size Code No.	Thread Size	F	H
-1	M6 x 1,00	10,90	6,70



Tolerance on all dimensions +/- .26mm