

Craftech Industries'
MACHINING DIVISION



Founded in 1967, Craftech is a leading manufacturer of precision plastic fasteners and components supplying markets worldwide.

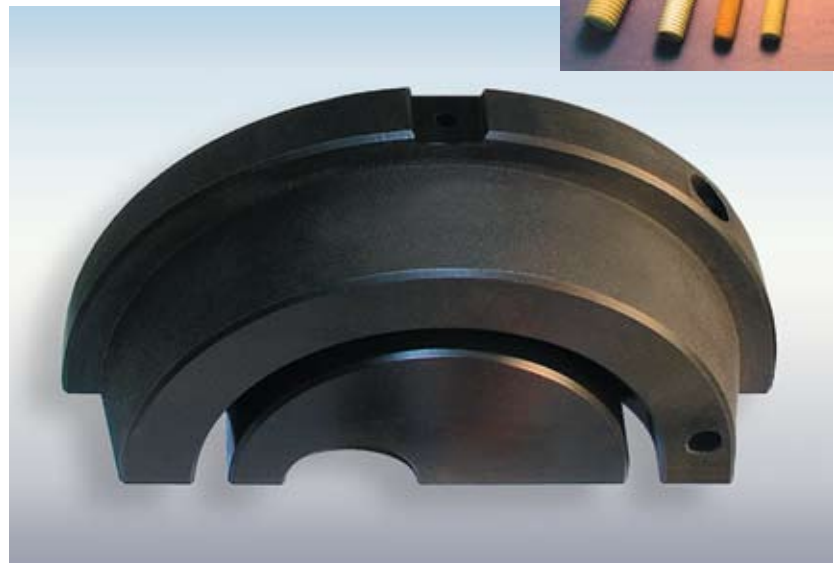
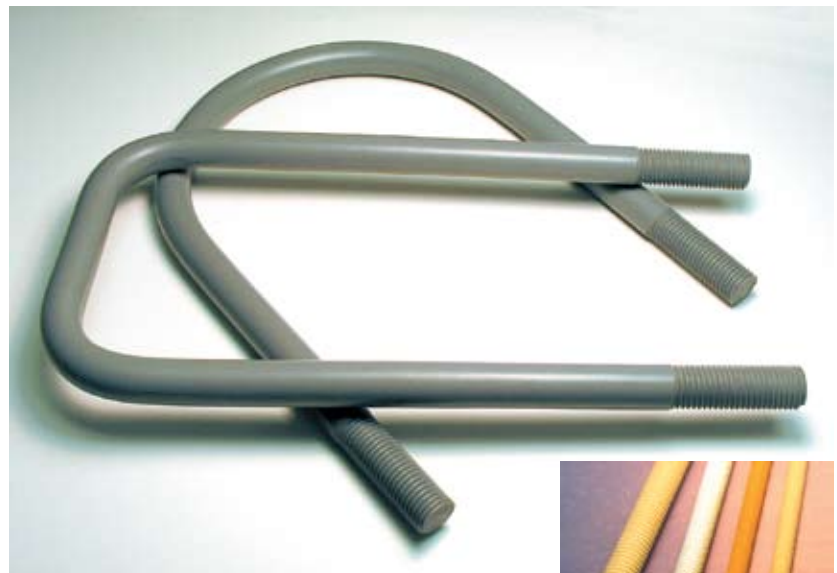
We produce plastic hardware for a variety of industries including Aerospace, Telecommunications, Semiconductor, Photovoltaic, Medical, Waste Management, Chemical, Electronics, Computer, Fluid Handling, Marine and other commercial markets.

Our machining capabilities include automatic screw machining, CNC machining and secondary operations.

All phases of standard and custom machining are done within our facility.



(top left) Machined CPVC part.
 (center, left to right) CPVC part, Ultem 1000 custom part, Ultem 2300 hex nut, Ultem 1000 insulator.
 (above) Ultem 1000 threaded part and PVC slotted flat head screw and hex nut.



(top right) CPVC formed u-bolts.
 (center right) Black Delrin custom part.
 (insert) Threaded Rod in assorted plastic materials.
 (below) Delrin AF custom part.
 (right) PEEK T-Series custom CNC part.



(left) Screw machine in operation.
 (previous page) Center photo of CNC machined parts.
 (left, top to bottom, insert images) Ultem 2300 hex socket screw, PEEK slotted and threaded custom part, Ultem 1000 custom part.
 (right, top to bottom, insert images) PEEK custom part for Solar industry, PEEK custom part and Teflon CNC custom part.

Craftech manufactures plastic fasteners and components for a wide range of equipment manufacturers.

Craftech uses a wide range of equipment for producing high quality precision screw machine and CNC products.

Single spindle and multi-spindle automatic screw machines manufacture work from 1/32" up to 2" diameter and 1/32" up to 4" in length. CNC lathes and milling centers manufacture work from 3/8" up to 15" diameter and 1/32" up to 13" in length.

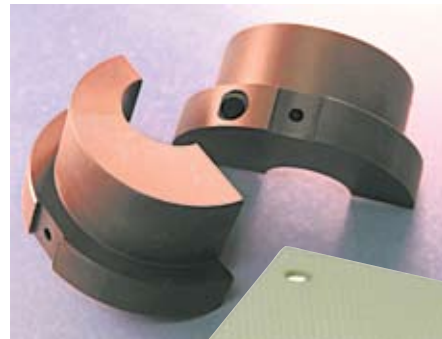
Craftech is highly competitive on quantities ranging from prototypes to long, medium and short runs.

Secondary operations include milling, tapping, slotting, die cutting, assembly and packaging.

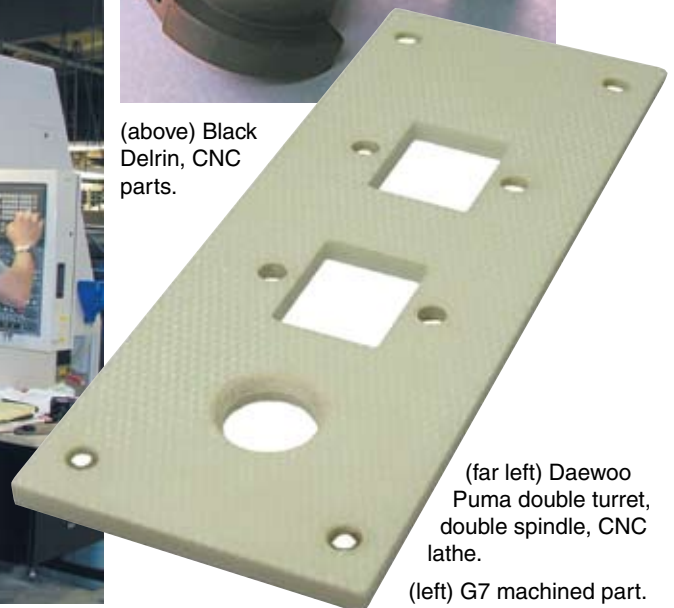
Our engineers, machinists, quality control and customer service personnel are ready to serve your high quality, machined part needs. Call Craftech Industries for a prompt quote.



(above) Machined Teflon PTFE and PFA parts.
(left) Small dimensional parts.
(below) Custom CNC parts in a variety of plastic materials.



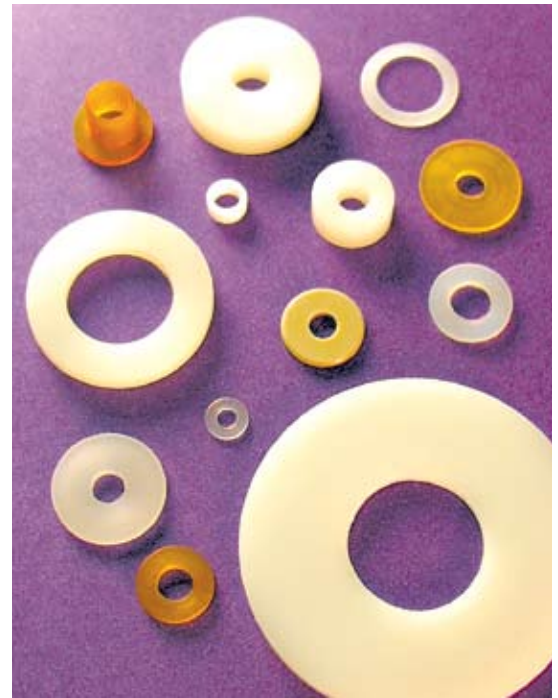
(above) Black Delrin, CNC parts.



(far left) Daewoo Puma double turret, double spindle, CNC lathe.
(left) G7 machined part.

Partial list of machinable materials includes:

- | | | |
|---------------------|--------------------|---------------|
| ABS | Phenolic Pape | Polysulfone |
| Acetal | PFA | PPS |
| Acetal Glass-filled | Polycarbonate | PTFE |
| Acrylic | Polycarbonate | PVC |
| Celcon | Glass-filled | PVDF |
| Celcon Glass-filled | Polyethylene | Radel A |
| Celenex®, 3300 | High Density | Radel R |
| CPVC | Polyethylene | Rexolite |
| Delrin | Low Density | Techtron |
| Delrin Glass-filled | Polyethylene | Teflon (PFA) |
| Ertalyte | Glass-filled | Teflon (PTFE) |
| FEP | Polyethylene | Teflon (PTFE) |
| Fiber Glass G10 | UV Resistant | Glass-filled |
| Halar | Polypropylene | Tefzel |
| Kevlar-filled Nylon | Polypropylene | Torlon |
| Lexan | Flame Retardant | UHMW |
| Lexan Short | Polypropylene | Ultem 1000 |
| Glass-filled | High Density | Ultem 2300 |
| Lexan Long | Polypropylene | Glass-filled |
| Glass-filled | High Impact | Vespel |
| Noryl | Polypropylene | Vinyl Ester |
| Noryl Glass-filled | Long Glass-filled | Zelux |
| Nylatron | Polypropylene | |
| Nylon 6/6 | Short Glass-filled | |
| Nylon 6/6 Short | Polystyrene | |
| Glass-filled | | |
| Nylon 6/6 Long | | |
| Glass-filled | | |
| Nylon 6/6 UV | | |
| Nylon Carbon-filled | | |
| Nylon MDS | | |
| Nylon Super Tough | | |
| PCTFE | | |
| PEEK | | |
| PEEK Glass-filled | | |
| PEEK Carbon-filled | | |
| PES | | |
| Phenolic CE Canvas | | |
| Phenolic Cotton | | |
| Phenolic Linen | | |



(top right) Machined washers, spacers and shoulder washers in various plastic materials

(center) PEEK and Ultem 1000 custom parts.

(inset center) Machining G10 fiber-glass spacer.

(above left) Variety of custom and standard, small-dimensional parts.

(above right) Custom white polypropylene, Ultem 1000, PEEK and carbon-filled PEEK parts.

(left) Machined G10 parts.

(right) Machined PVC part.

