

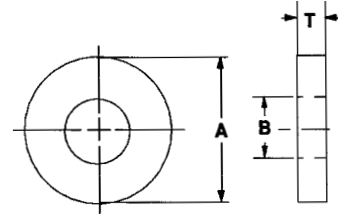
MOLDED WASHERS and SPACERS

MOLDED NYLON FLAT WASHERS

*Available in other materials. See materials list in index.
Other sizes available on request.
Also, see MACHINED FLAT WASHERS starting on page 181-185.

*Available in the following materials:

Material Code No.	Material Name
-18	Nylon 6/6, (natural)
-78	Nylon 6/6, (black)



Part No. DN214 - (Size Code No.) - (Material Code No.)

Size Code No.	O.D. A	I.D. B	Thk. T	Size Code No.	O.D. A	I.D. B	Thk. T	Size Code No.	O.D. A	I.D. B	Thk. T	Size Code No.	O.D. A	I.D. B	Thk. T
-2	.090	.031	.031	-30	.312	.110	.125	-5900	.187	.130	.150	-8510	.312	.150	.040
-2020	.156	.031	.002	-31	.314	.110	.062	-61	.285	.130	.060	-86	.312	.150	.050
-2024	.085	.032	.062	-32	.206	.112	.053	-62	.312	.130	.062	-8600	.312	.150	.060
-2026	.125	.032	.060	-33	.240	.113	.040	-6300	.355	.130	.062	-87	.375	.150	.030
-3	.100	.035	.020	-3300	.199	.115	.050	-6302	.375	.130	.030	-8704	.750	.150	.055
-4	.153	.038	.060	-3305	.197	.115	.030	-6400	.375	.131	.093	-8708	.251	.151	.035
-5	.170	.038	.060	-34	.250	.115	.032	-65	.295	.135	.127	-90	.375	.153	.063
-6	.138	.040	.033	-35	.250	.115	.062	-650	.490	.136	.055	-9020	.251	.155	.077
-600	.120	.045	.130	-36	.250	.115	.093	-66	.310	.138	.030	-9030	.280	.155	.160
-8	.156	.050	.200	-37	.250	.115	.125	-660	.505	.138	.080	-9000	.250	.156	.100
-8000	.185	.051	.132	-39	.290	.115	.047	-67	.180	.139	.064	-9100	.312	.156	.125
-8002	.120	.055	.080	-3900	.312	.115	.140	-7000	.250	.140	.150	-9200	.320	.156	.031
-9	.312	.062	.125	-3902	.182	.120	.125	-7010	.260	.140	.080	-9210	.438	.156	.062
-10	.120	.063	.180	-3904	.187	.120	.032	-7020	.250	.140	.094	-93	.440	.156	.032
-1000	.312	.063	.090	-41	.187	.120	.060	-7022	.281	.140	.020	-94	.687	.156	.135
-12	.179	.065	.078	-4110	.187	.120	.062	-7024	.312	.140	.020	-95	1.000	.156	.062
-1200	.197	.067	.154	-4105	.190	.120	.100	-71	.312	.140	.032	-9500	.315	.157	.197
-13	.156	.076	.062	-42	.218	.120	.037	-72	.312	.140	.047	-96	.250	.160	.062
-14	.259	.081	.062	-4200	.250	.120	.140	-73	.312	.140	.062	-98	.285	.160	.032
-15	.695	.082	.184	-4300	.275	.120	.062	-74	.312	.140	.093	-9800	.310	.160	.060
-16	.196	.085	.031	-4302	.280	.120	.145	-75	.312	.140	.125	-99	.312	.162	.062
-17	.187	.086	.130	-4305	.281	.120	.020	-76	.375	.140	.080	-100	.500	.165	.075
-1700	1.000	.093	.125	-4400	.280	.120	.030	-760	.400	.140	.062	-101	.620	.165	.250
-18	.188	.094	.020	-4405	.281	.120	.060	-764	.500	.140	.062	-1010	.250	.166	.061
-19	.250	.090	.032	-4410	.281	.120	.040	-77	.187	.141	.125	-1015	.250	.166	.082
-20	.250	.090	.055	-45	.288	.120	.040	-7700	.234	.141	.090	-103	.354	.169	.031
-21	.250	.090	.062	-4600	.228	.122	.093	-78	.250	.141	.062	-1030	.375	.170	.040
-22	.250	.090	.093	-47	.199	.125	.045	-79	.375	.141	.031	-1035	.375	.170	.050
-23	.250	.090	.125	-50	.225	.125	.100	-80	.562	.141	.062	-104	.682	.170	.062
-2301	.187	.091	.080	-51	.235	.125	.040	-8110	.250	.142	.110	-105	.246	.171	.100
-2300	.219	.094	.100	-52	.250	.125	.062	-8115	.250	.143	.082	-107	.250	.171	.100
-24	.375	.094	.281	-53	.250	.125	.095	-8118	.307	.144	.059	-109	.375	.171	.032
-25	.312	.095	.062	-530	.250	.125	.150	-8220	.500	.144	.125	-110	.375	.171	.062
-2500	.178	.098	.045	-54	.312	.125	.032	-8224	.187	.145	.050	-111	.375	.171	.093
-26	.186	.098	.030	-55	.315	.125	.031	-8226	.250	.147	.125	-112	.375	.171	.125
-27	.197	.100	.156	-56	.375	.125	.040	-8228	.495	.147	.298	-114	.630	.171	.060
-2702	.316	.100	.033	-5600	.375	.125	.072	-8230	.225	.150	.045	-118	.375	.172	.060
-2700	1.250	.100	.060	-5602	.500	.125	.125	-8232	.225	.150	.090	-1180	.375	.173	.093
-2704	.502	.101	.040	-57	.625	.125	.062	-8238	.280	.150	.108	-1182	.500	.175	.062
-28	.220	.104	.031	-58	.250	.126	.025	-8700	.329	.150	.060	-119	.408	.177	.062
-2890	.281	.107	.020	-5800	.245	.128	.093	-8500	.312	.150	.020				
-29	.158	.110	.070	-59	.322	.128	.062	-8505	.312	.150	.030				

(continued next page)

Tolerances:
O.D. +/- .015.
Thickness & I.D. +/- .010

.031 I.D. to .177 I.D.

MOLDED WASHERS and SPACERS (continued)

Part No. DN214 - (Size Code No.) - (Material Code No.)

Size Code No.	O.D. A	I.D. B	Thk. T	Size Code No.	O.D. A	I.D. B	Thk. T	Size Code No.	O.D. A	I.D. B	Thk. T	Size Code No.	O.D. A	I.D. B	Thk. T
-1190	.356	.179	.118	-1451	.460	.204	.031	-1740	.486	.252	.069	-2077	.731	.266	.118
-1192	.370	.184	.047	-1452	.500	.205	.125	-175	.622	.252	.060	-2078	.618	.270	.220
-1195	.310	.185	.032	-1454	.270	.207	.050	-176	.375	.253	.084	-2079	1.250	.270	.080
-1210	.250	.187	.130	-146	.435	.209	.039	-1760	.443	.253	.125	-2080	.416	.272	.120
-1215	.256	.187	.045	-1460	.492	.209	.020	-1764	.568	.253	.093	-2082	.538	.272	.047
-122	.312	.187	.050	-147	.620	.209	.187	-178	.565	.254	.094	-2084	.750	.274	.250
-1220	.380	.187	.155	-148	.280	.210	.125	-1780	1.000	.254	.325	-2086	.433	.275	.075
-1225	.440	.187	.093	-1480	.307	.210	.125	-1784	.375	.255	.093	-2088	2.150	.275	.125
-1228	.500	.187	.062	-1485	.375	.210	.152	-179	.382	.255	.195	-2090	.335	.280	.195
-123	.625	.187	.062	-149	.375	.210	.160	-180	.500	.255	.075	-2092	.453	.280	.030
-124	.750	.187	.156	-1490	.740	.215	.095	-181	.555	.255	.047	-209	.630	.280	.030
-125	.500	.188	.032	-1500	.313	.217	.125	-182	.900	.255	.125	-210	.687	.280	.031
-1250	.500	.188	.062	-1505	.345	.218	.032	-1820	.591	.256	.087	-2100	.490	.281	.030
-126	1.500	.188	.068	-151	.375	.218	.032	-183	.500	.257	.032	-212	.625	.281	.110
-1260	.330	.189	.080	-1510	.438	.218	.156	-184	.500	.257	.062	-2110	.625	.281	.210
-1265	.375	.189	.031	-152	.625	.218	.031	-186	.500	.257	.093	-214	.719	.281	.062
-1268	1.006	.189	.040	-153	.625	.218	.062	-187	.500	.257	.125	-2150	1.250	.281	.063
-127	1.006	.189	.064	-154	.625	.218	.125	-188	.625	.257	.020	-216	.753	.282	.123
-1270	.282	.190	.065	-155	.625	.218	.250	-1884	.750	.257	.030	-2162	.638	.283	.027
-128	.310	.190	.032	-156	.625	.218	.500	-1880	.750	.257	.062	-2167	.625	.284	.062
-1290	.335	.190	.032	-1570	.750	.218	.187	-1886	.750	.257	.109	-217	.445	.290	.033
-130	.375	.190	.065	-1575	.500	.219	.156	-189	.875	.257	.031	-2170	.560	.290	.062
-1300	.434	.190	.125	-158	.295	.220	.127	-190	.875	.257	.062	-2174	.625	.292	.040
-1310	.750	.191	.100	-159	.374	.220	.062	-1900	1.250	.257	.255	-218	.685	.295	.062
-1320	.312	.192	.110	-1580	.738	.220	.155	-1910	.312	.260	.070	-220	.750	.296	.032
-1322	.370	.192	.080	-1585	.740	.220	.120	-1912	.312	.260	.109	-2190	1.000	.297	.063
-1324	.370	.192	.125	-1590	.377	.221	.095	-193	.350	.260	.062	-2194	.750	.300	.125
-1326	.406	.192	.062	-1596	.348	.222	.081	-195	.437	.260	.047	-2196	.620	.301	.039
-1328	.510	.193	.050	-1598	.450	.222	.048	-204	.490	.260	.245	-2198	.578	.307	.125
-131	.750	.193	.040	-160	1.258	.226	.065	-196	.560	.260	.125	-221	.495	.310	.095
-132	.375	.194	.032	-1604	1.250	.226	.125	-197	.562	.260	.062	-2212	.750	.310	.170
-133	.375	.194	.062	-161	.312	.228	.250	-198	.615	.260	.100	-2214	.750	.310	.375
-134	.375	.194	.093	-1610	.415	.229	.102	-1984	.625	.260	.140	-222	1.175	.310	.125
-135	.375	.194	.125	-162	.970	.230	.125	-1986	.625	.260	.180	-2210	1.250	.310	.120
-1350	.525	.194	.032	-163	.406	.234	.062	-1988	1.225	.260	.060	-2220	.500	.312	.096
-136	.625	.194	.125	-164	.425	.235	.130	-199	.685	.260	.032	-223	.500	.312	.125
-1362	1.000	.194	.160	-1642	.350	.240	.040	-1990	.687	.260	.020	-224	.500	.312	.156
-1364	.245	.195	.125	-166	.375	.242	.062	-1995	.687	.260	.050	-2240	.625	.312	.250
-1360	.437	.195	.020	-1660	.433	.244	.054	-200	.687	.260	.040	-2245	.712	.312	.081
-137	.437	.195	.031	-1664	.689	.244	.2364	-201	.687	.260	.060	-225	.812	.312	.125
-1370	.437	.195	.040	-167	.375	.250	.093	-2010	.745	.260	.066	-226	.855	.312	.125
-1373	.437	.195	.050	-1670	.375	.250	.150	-2015	.745	.260	.125	-227	.875	.312	.125
-1376	.437	.195	.060	-168	.435	.250	.094	-202	.750	.261	.095	-228	.875	.312	.187
-1380	.245	.195	.125	-1680	.465	.250	.015	-192	.312	.262	.127	-2280	1.000	.312	.032
-139	.435	.196	.046	-169	.500	.250	.150	-1922	.433	.262	.126	-2284	1.000	.312	.187
-1390	.353	.197	.157	-170	.562	.250	.031	-1924	.500	.262	.150	-2286	1.500	.312	.062
-1395	.280	.200	.093	-171	.625	.250	.062	-1928	1.000	.264	.070	-229	.531	.313	.031
-140	.380	.200	.030	-1710	.625	.250	.190	-1934	.405	.265	.125	-2310	.560	.315	.062
-141	.390	.200	.031	-172	.719	.250	.062	-205	.560	.265	.030	-231	.625	.315	.031
-1410	.400	.200	.093	-173	1.250	.250	.255	-2052	.562	.265	.187	-233	.872	.315	.062
-142	.437	.200	.062	-1730	1.250	.250	.062	-206	.620	.265	.192	-2330	.890	.315	.215
-143	.437	.200	.090	-1731	1.375	.250	.064	-2060	.625	.265	.093	-234	1.121	.316	.034
-1430	.437	.200	.115	-1732	1.375	.250	.750	-2070	.875	.265	.093	-235	.500	.317	.032
-144	.450	.200	.048	-1733	1.395	.250	.118	-2072	1.000	.265	.262	-236	.500	.317	.062
-145	.435	.202	.187	-1734	.389	.251	.125	-2073	1.500	.265	.312				
-1450	.562	.203	.062	-174	.472	.252	.059	-2076	1.500	.265	.375				

(continued next page)

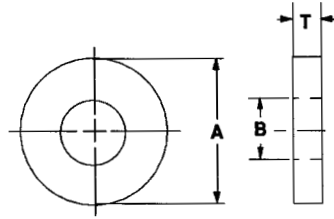
Tolerances:
O.D. +/- .015.
Thickness & I.D. +/- .010

.179 I.D. to .317 I.D.

MOLDED WASHERS and SPACERS (continued)

*Available in the following materials:

Material Code No.	Material Name
-18	Nylon 6/6, (natural)
-78	Nylon 6/6, (black)



Part No. DN214 - (Size Code No.) - (Material Code No.)

Size Code No.	O.D. A	I.D. B	Thk. T	Size Code No.	O.D. A	I.D. B	Thk. T	Size Code No.	O.D. A	I.D. B	Thk. T	Size Code No.	O.D. A	I.D. B	Thk. T
-237	.500	.317	.093	-2555	.472	.350	.110	-2868	.542	.388	.220	-3138	.805	.418	.062
-238	.500	.317	.125	-257	.620	.350	.188	-2869	.695	.388	.059	-314	.687	.421	.031
-2380	.565	.317	.095	-258	.750	.352	.031	-2894	.754	.389	.075	-315	.687	.421	.062
-2384	.750	.317	.040	-259	.735	.360	.160	-289	.625	.390	.265	-316	.625	.422	.203
-239	.750	.317	.062	-2590	.983	.360	.120	-2892	.680	.390	.125	-320	.810	.435	.060
-2390	.890	.317	.245	-2595	.547	.363	.062	-2900	.688	.390	.031	-317	.625	.437	.093
-2392	.440	.318	.031	-261	1.235	.365	.110	-2905	.750	.390	.050	-318	.625	.437	.250
-2395	.680	.318	.187	-262	.560	.373	.031	-2910	.720	.390	.300	-3180	.629	.437	.125
-241	.688	.318	.190	-263	.505	.375	.050	-292	.750	.390	.062	-3182	.750	.437	.036
-2412	.755	.318	.100	-2630	.591	.374	.118	-293	.750	.390	.140	-3184	.876	.437	.502
-2414	.500	.320	.170	-2632	.453	.375	.062	-294	.875	.390	.093	-3186	1.250	.437	.125
-2415	.500	.320	.200	-2634	.490	.375	.087	-295	.880	.390	.062	-319	1.500	.437	.130
-2416	.500	.320	.250	-2636	.500	.375	.032	-2950	.885	.390	.094	-3190	.650	.440	.125
-2410	.500	.320	.281	-265	.500	.375	.087	-2952	1.000	.390	.175	-3192	.662	.440	.122
-2411	.560	.320	.187	-266	.530	.375	.093	-2954	1.000	.390	.250	-3194	.750	.440	.093
-2413	.562	.320	.020	-267	.625	.375	.032	-296	1.120	.390	.125	-3200	.745	.443	.095
-2417	.562	.320	.125	-269	.750	.375	.062	-2960	1.265	.390	.156	-321	.750	.443	.032
-2418	.750	.320	.250	-2690	.750	.375	.125	-298	1.267	.390	.045	-322	.750	.443	.062
-2420	1.000	.320	.375	-2694	3.750	.375	.062	-2970	2.000	.390	.062	-323	.750	.443	.093
-2424	1.125	.320	.062	-270	.825	.375	.100	-300	.757	.394	.125	-324	.750	.443	.125
-232	.625	.321	.125	-272	.900	.375	.055	-301	.785	.394	.080	-3240	.670	.448	.120
-243	.750	.323	.125	-2730	1.000	.375	.062	-3010	.748	.395	.093	-325	1.000	.450	.125
-2430	1.000	.326	.125	-2732	1.000	.375	.312	-303	.598	.396	.175	-3250	1.375	.450	.090
-2435	.630	.327	.071	-2735	1.500	.375	.375	-3030	.860	.397	.165	-326	.938	.453	.155
-245	.390	.328	.079	-274	.875	.377	.062	-3034	.748	.400	.089	-3260	.709	.461	.110
-2450	.562	.328	.095	-2740	1.170	.377	.062	-3036	1.270	.400	.062	-327	.523	.463	.060
-2455	.590	.328	.147	-2744	.551	.378	.063	-3038	.528	.402	.039	-328	.713	.463	.065
-246	.750	.328	.032	-2748	.615	.380	.122	-304	.807	.402	.065	-3282	.614	.464	.110
-2460	.465	.330	.031	-275	.625	.380	.062	-3040	.748	.403	.059	-3284	.575	.467	.090
-2465	.625	.330	.092	-276	.625	.380	.093	-3044	.542	.404	.097	-3286	.659	.468	.119
-2470	1.375	.330	.125	-277	.625	.380	.125	-3048	.542	.404	.110	-3288	.750	.470	.200
-2475	.944	.331	.098	-2770	.750	.380	.187	-305	.540	.405	.112	-3280	.929	.472	.126
-2478	1.000	.333	.385	-279	.875	.380	.093	-3052	.512	.406	.089	-3292	.685	.473	.190
-2480	1.500	.335	.125	-2790	.937	.380	.062	-3054	.615	.406	.042	-329	.525	.475	.070
-248	.709	.336	.079	-2800	1.250	.380	.125	-3056	.625	.406	.120	-3295	1.184	.477	.079
-249	.683	.337	.063	-2804	1.370	.380	.125	-3050	.750	.406	.032	-330	.825	.480	.100
-2490	.990	.337	.292	-281	.932	.381	.031	-3051	.750	.406	.060	-3302	.554	.481	.030
-2495	1.000	.339	.154	-2810	.540	.382	.096	-3055	.750	.406	.200	-331	.671	.481	.031
-250	.615	.340	.125	-2814	.738	.382	.160	-308	.984	.406	.125	-3310	.775	.485	.150
-251	.740	.340	.062	-282	.750	.382	.066	-309	1.000	.406	.062	-3312	1.006	.485	.040
-256	.865	.340	.187	-283	.750	.382	.160	-3094	1.005	.406	.080	-3314	.710	.490	.125
-2510	1.260	.340	.250	-284	.500	.385	.160	-3090	1.055	.406	.250	-333	.809	.495	.059
-2515	.437	.343	.062	-2840	.625	.385	.185	-310	.875	.408	.060	-3330	.742	.498	.119
-2518	.687	.343	.031	-2845	.750	.385	.020	-3100	.625	.410	.033	-3352	.600	.500	.120
-252	.500	.343	.109	-2848	.750	.385	.045	-312	1.010	.410	.100	-3354	.625	.500	.132
-2530	.885	.343	.062	-287	.750	.385	.200	-313	.866	.413	.098	-3305	.880	.500	.065
-2535	.980	.343	.065	-2860	.880	.385	.125	-3130	1.181	.413	.098	-336	.875	.500	.125
-255	.687	.344	.064	-2865	.885	.385	.062	-3134	.555	.415	.060				
-2550	.452	.349	.075	-2866	.812	.386	.187	-3136	.990	.416	.060				

(continued next page)

Tolerances:
O.D. +/- .015.

Thickness & I.D. +/- .010

.317 I.D. to .500 I.D.

MOLDED WASHERS and SPACERS (continued)

Part No. DN214 - (Size Code No.) - (Material Code No.)

Size Code No.	O.D. A	I.D. B	Thk. T	Size Code No.	O.D. A	I.D. B	Thk. T	Size Code No.	O.D. A	I.D. B	Thk. T	Size Code No.	O.D. A	I.D. B	Thk. T
-337	.900	.500	.075	-3650	.755	.558	.030	-3944	.871	.706	.111	-4196	1.500	1.015	.250
-3372	1.000	.500	.062	-3654	.825	.561	.145	-3946	1.102	.728	.039	-4198	1.135	1.022	.500
-3374	1.000	.500	.100	-3658	.700	.565	.062	-3970	.840	.730	.125	-4190	1.312	1.026	.191
-3376	1.125	.500	.062	-366	.705	.562	.093	-3973	1.000	.730	.062	-420	1.850	1.028	.120
-341	1.500	.500	.125	-368	1.000	.562	.125	-3975	1.060	.740	.100	-421	1.218	1.031	.040
-3410	1.220	.502	.150	-3680	1.255	.562	.031	-3978	1.062	.740	.225	-4210	2.500	1.075	.125
-342	1.120	.503	.033	-3684	1.024	.563	.220	-3982	.875	.750	.160	-4216	2.000	1.080	.160
-343	.625	.505	.092	-3688	.750	.565	.125	-3980	1.505	.750	.053	-422	1.312	1.088	.062
-344	.750	.505	.032	-371	.687	.568	.062	-3984	.875	.755	.125	-423	2.935	1.125	.093
-345	.750	.505	.062	-3710	.715	.570	.100	-3986	.962	.755	.101	-4234	1.540	1.164	.192
-346	.750	.505	.093	-3720	.937	.580	.082	-3988	1.000	.755	.175	-4230	1.468	1.180	.100
-347	.750	.505	.125	-3725	.937	.583	.062	-3992	1.500	.755	.125	-4238	1.500	1.250	.125
-3470	1.000	.505	.125	-3726	.882	.589	.085	-3996	1.000	.760	.062	-4240	1.695	1.255	.065
-3478	1.500	.505	.125	-3730	.778	.590	.032	-3990	1.420	.760	.100	-4243	3.000	1.270	.093
-3475	1.500	.505	.130	-3732	1.493	.604	.220	-3998	1.125	.763	.125	-4245	2.260	1.275	.120
-348	.940	.506	.064	-3734	.753	.605	.055	-400	1.250	.765	.080	-425	2.010	1.280	.135
-3480	.692	.507	.042	-3736	.753	.605	.067	-4000	1.490	.765	.100	-4260	2.280	1.325	.120
-3482	1.500	.507	.250	-3728	1.128	.605	.239	-402	.993	.771	.124	-427	1.625	1.375	.110
-3484	.745	.509	.150	-3737	.805	.621	.125	-4020	1.000	.781	.075	-4272	1.650	1.395	.140
-3486	.643	.510	.090	-3738	.805	.621	.101	-4030	1.575	.795	.039	-4270	1.635	1.405	.093
-3488	.805	.510	.125	-373	.750	.625	.170	-403	1.250	.805	.060	-4274	2.250	1.410	.130
-3489	.805	.510	.220	-374	.937	.625	.093	-404	2.000	.805	.062	-4275	2.180	1.420	.050
-3492	1.312	.510	.400	-3740	1.312	.625	.050	-4040	2.968	.805	.062	-4278	2.970	1.490	.125
-3490	1.375	.510	.062	-378	1.718	.625	.050	-405	1.490	.810	.062	-4290	1.619	1.495	.245
-3494	2.000	.510	.060	-379	.875	.627	.114	-406	1.057	.812	.125	-429	1.724	1.500	.032
-3496	1.570	.512	.118	-380	.812	.630	.100	-4060	1.250	.812	.080	-430	1.906	1.500	.093
-3498	.750	.515	.250	-3800	.812	.630	.220	-4062	1.750	.812	.125	-4306	1.985	1.525	.125
-350	.775	.515	.250	-3802	1.130	.630	.062	-4064	3.132	.812	.125	-431	2.000	1.525	.060
-3500	.900	.515	.060	-3804	1.562	.630	.062	-4066	1.250	.839	.040	-4310	2.995	1.625	.093
-3510	1.500	.515	.437	-3806	2.000	.630	.125	-4068	1.114	.840	.127	-4318	2.205	1.720	.050
-352	1.468	.515	.050	-381	1.000	.631	.128	-4070	1.000	.844	.125	-432	2.500	1.750	.125
-3520	.740	.516	.125	-3810	1.004	.631	.065	-407	1.031	.844	.040	-433	2.135	1.760	.130
-3495	.743	.516	.093	-382	1.000	.632	.185	-4074	1.117	.875	.195	-434	2.060	1.800	.055
-353	1.250	.516	.062	-383	2.930	.632	.150	-408	1.250	.875	.125	-4360	2.690	1.930	.125
-354	1.000	.518	.080	-384	.782	.633	.125	-4082	1.280	.880	.062	-438	3.260	2.620	.062
-3540	1.490	.521	.120	-3840	.995	.635	.250	-4080	1.125	.889	.060	-439	3.016	2.800	.072
-355	.712	.522	.062	-3845	1.120	.635	.140	-4086	1.125	.920	.126	-440	3.016	2.800	.122
-3550	.738	.522	.120	-386	.781	.640	.031	-409	1.750	.928	.275	-460	3.600	3.030	.075
-3554	1.363	.523	.051	-387	1.375	.640	.090	-4102	1.310	.938	.040				
-3556	.690	.525	.250	-388	1.225	.643	.100	-4104	1.625	.940	.060				
-3558	.636	.526	.098	-3880	1.122	.644	.217	-4106	1.132	.942	.130				
-357	1.375	.525	.125	-389	1.310	.645	.120	-4100	1.800	.948	.057				
-358	.718	.526	.219	-3892	1.119	.650	.090	-413	1.203	.984	.050				
-3580	.718	.526	.281	-3890	.844	.656	.060	-4130	1.450	.990	.120				
-359	.750	.530	.230	-390	1.375	.656	.125	-4134	1.625	1.000	.187				
-3593	1.375	.530	.173	-3910	1.575	.659	.118	-4138	2.250	1.000	.075				
-3596	.697	.531	.158	-3906	1.000	.655	.125	-414	1.312	1.000	.125				
-3598	.700	.531	.093	-392	1.500	.665	.094	-415	1.312	1.000	.191				
-3590	.740	.531	.187	-3920	.957	.666	.139	-416	1.437	1.000	.069				
-361	.865	.531	.200	-393	.865	.688	.155	-417	1.450	1.000	.063				
-3610	.870	.531	.187	-3930	.960	.692	.126	-4170	1.563	1.000	.062				
-364	1.625	.531	.312	-3934	1.500	.696	.120	-418	1.245	1.001	.031				
-3640	1.120	.540	.125	-394	.812	.695	.093	-4180	1.468	1.010	.112				
-3644	.817	.544	.140	-3940	1.425	.697	.100	-4184	1.375	1.015	.125				
-3646	1.030	.550	.062	-3942	.926	.705	.124	-419	1.500	1.015	.080				

Tolerances:
O.D. +/- .015.
Thickness & I.D. +/- .010

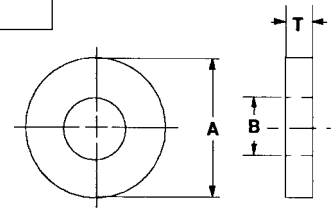
.500 I.D. to 3.030 I.D.

MOLDED WASHERS and SPACERS (continued)

*Available in the following materials:

Material Code No.	Material Name
-18	Nylon 6/6, (natural)
-78	Nylon 6/6, (black)

*Available in other materials. See materials list in index.
Other sizes available on request.



MOLDED NYLON METRIC FLAT WASHERS

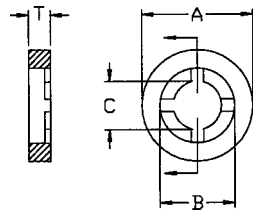
Part No. GM117 - (Size Code No.) - (Material Code No.)

Size Code No.	Thread Size	A	B	T	Size Code No.	Thread Size	A	B	T	Size Code No.	Thread Size	A	B	T
-1	M2	5,00	2,15	0,80	-6	M5	11,00	5,30	1,00	-11	M12	25,14	13,43	2,53
-2	M2,5	5,60	2,65	0,80	-7	M6	12,00	6,40	1,50	-12	M12	33,64	13,40	3,06
-3	M3	8,00	3,20	0,80	-8	M8	18,00	8,40	2,00	Tolerance on all dimensions +/- .25mm				
-4	M3,5	8,00	3,70	0,80	-9	M8,5	25,00	8,50	2,00					
-5	M4	9,00	4,30	0,80	-10	M10	22,00	10,50	2,50					

MOLDED NYLON RETAINING WASHERS

Part No. F127 - (Size Code No.) - (Material Code No.)

Size Code No.	A	B	C	T	Size Code No.	A	B	C	T	Size Code No.	A	B	C	T
-1	.203	.115	.078	.031	-9	.453	.277	.177	.031	-17	1.031	.570	.410	.031
-2	.203	.115	.078	.062	-10	.453	.277	.177	.062	-18	1.031	.570	.410	.062
-3	.265	.156	.102	.032	-100	.500	.277	.177	.062	-19	1.125	.690	.468	.031
-4	.265	.156	.102	.062	-11	.594	.375	.234	.031	-20	1.125	.690	.468	.062
-40	.265	.156	.102	.125	-12	.594	.375	.234	.062	-200	1.260	.563	.350	.062
-5	.328	.198	.128	.031	-13	.734	.470	.292	.031	-202	1.334	.940	.825	.062
-6	.328	.198	.128	.062	-14	.734	.470	.292	.062	-204	1.385	1.070	.970	.062
-7	.390	.235	.152	.031	-15	.890	.564	.350	.031					
-8	.390	.235	.152	.062	-16	.890	.564	.350	.062					

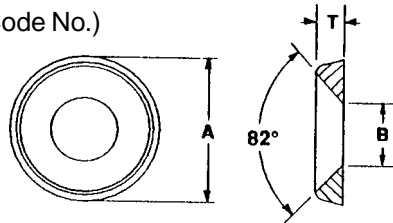


Tolerances:
O.D. +/- .015.
Thickness +/- .010
I.D. +/- .010

MOLDED NYLON FINISHING WASHERS

Part No. G1203 - (Size Code No.) - (Material Code No.)

Size Code No.	O.D. A	I.D. B	Thick T	Screw Size
-1	.437	.143	.100	#6
-2	.515	.171	.115	#8
-3	.580	.191	.152	#10
-4	.609	.225	.160	#12
-5	.683	.260	.183	1/4



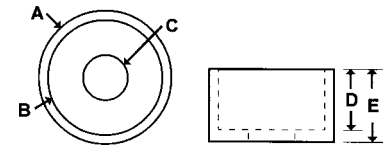
Tolerances:
O.D. +/- .015.
Thickness & I.D. +/- .010

For other materials see
MACHINED FINISHING WASHERS
on page 194.

MOLDED NYLON CUP WASHERS

Part No. DN400 - (Size Code No.) - (Material Code No.)

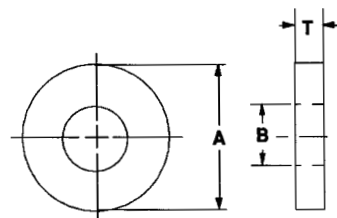
Size Code No.	A	B	C	D	E	Size Code No.	A	B	C	D	E	Size Code No.	A	B	C	D	E
-1	.305	.245	.115	.117	.157	-31	.497	.389	.187	.093	.139	-50	.895	.625	.344	.250	.375
-2	.360	.300	.140	.142	.182	-32	.568	.375	.201	.127	.157	-54	.895	.625	.344	.375	.500
-3	.414	.354	.171	.166	.206	-4	.470	.410	.194	.190	.230						
-30	.414	.354	.171	.130	.170	-5	.595	.535	.257	.247	.287						



MOLDED CUSHIONING WASHERS and SPACERS

Standard Material:

Material Code No. Material Name
 -67 Engage 8400, (clear)



Part No. FW110 - (Size Code No.) - (Material Code No.)

Size Code No.	Screw Size	O.D. A	I.D. B	Nom. Thk. T	Size Code No.	Screw Size	O.D. A	I.D. B	Nom. Thk. T
-1	6	.250	.141	.060	-11	1/2	2.250	.530	.125
-2	8	.312	.171	.060	-12	5/8	2.250	.680	.125
-3	10	.375	.190	.060	-120	3/4	1.375	.875	.187
-4	12	.437	.200	.093	-13	3/4	2.250	.780	.125
-5	1/4	.500	.257	.093	-14	7/8	2.250	.890	.125
-6	5/16	.562	.317	.093	-15	1	2.250	1.060	.125
-7	3/8	.625	.380	.093	-16	1	3.000	1.060	.125
-70	1/2	.750	.531	.235	-160	1 1/4	1.875	1.312	.125
-8	1/2	1.000	.530	.093	-17	1 1/4	3.000	1.280	.125
-9	3/8	2.250	.380	.125	-175	1 7/8	2.281	1.937	.125
-10	3/8	3.000	.380	.125					

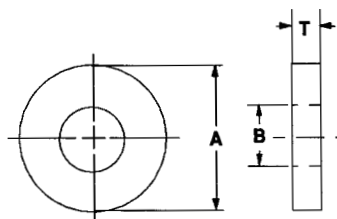
Tolerance: +/- .020

SPECIAL MOLDED WASHERS and SPACERS

*Available in the following materials:

Material Code No.	Material Name	Material Code No.	Material Name
-6	Ultem® 2300, (black)	-520	PPS, 30%Carbon Fiber, (black)
-48	Ryton® (PPS), 40% Short Glass-filled	-820	Isoplast™, 30% Short Glass-fiber, (grey)
-77	Ultem® 2300, (natural)	-822	Isoplast™, 40% Short Glass-fiber, (natural)
-228	Radel® AG330, 30% Glass-filled	-824	Isoplast™, 30% Short Glass-fiber, (natural)

*Available in other materials. See materials list in index.
 Other sizes available on request.
 Also, see MACHINED FLAT WASHERS starting on page 181-185.



Part No. FW126 - (Size Code No.) - (Material Code No.)

Size Code No.	Screw Size	O.D. A	I.D. B	Nom. Thk. T	Size Code No.	Screw Size	O.D. A	I.D. B	Nom. Thk. T
-1	6	.250	.141	.060	-10	3/8	3.000	.380	.125
-100	6	.312*	.141**	.060	-11	1/2	2.250	.530	.125
-2	8	.312	.171	.060	-12	5/8	2.250	.680	.125
-3	10	.375	.190	.060	-120	3/4	1.375	.875	.187
-4	12	.437	.200	.093	-13	3/4	2.250	.780	.125
-5	1/4	.500	.257	.093	-14	7/8	2.250	.890	.125
-6	5/16	.562	.317	.093	-15	1	2.250	1.060	.125
-7	3/8	.625	.380	.093	-16	1	3.000	1.060	.125
-70	1/2	.750	.531	.235	-160	1 1/4	1.875	1.312	.125
-8	1/2	1.000	.530	.093	-17	1 1/4	3.000	1.280	.125
-9	3/8	2.250	.380	.125	-175	1 7/8	2.281	1.937	.125

Tolerance: +/- .020 * Tolerance: +/- .010 ** Tolerance: +/- .003