

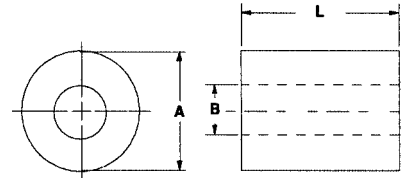
MOLDED WASHERS and SPACERS (continued)

MOLDED NYLON SPACERS

*Available in the following materials:

Material Code No.	Material Name
-18	Nylon 6/6, (natural)
-78	Nylon 6/6, (black)

*Available in other materials. See materials list in index.
Other sizes available on request.
Also, see MACHINED SPACERS starting on page 196-202.



ROUND SPACERS

Part No. DN205 - (Size Code No.) - (Material Code No.)

Size Code No.	O.D. A	I.D. B	Lgth. L	Size Code No.	O.D. A	I.D. B	Lgth. L	Size Code No.	O.D. A	I.D. B	Lgth. L
-5000	.138	.038	.065	-44	.250	.100	.127	-92	.312	.115	.437
-5005	.138	.038	.125	-4400	.250	.110	.530	-93	.312	.115	.500
-5010	.125	.047	.187	-4410	.157	.102	.217	-94	.312	.115	.562
-5015	.125	.047	.375	-4415	.198	.109	.345	-95	.312	.115	.625
-4	.125	.063	.187	-46	.187	.115	.125	-96	.312	.115	.687
-4010	.156	.063	.120	-47	.187	.115	.187	-97	.312	.115	.750
-4000	.187	.063	.250	-49	.187	.115	.250	-98	.312	.115	.812
-4005	.187	.063	.300	-4900	.187	.115	.281	-99	.312	.115	.875
-5	.187	.067	.140	-50	.187	.115	.312	-100	.312	.115	.937
-6	.150	.078	.312	-51	.187	.115	.375	-101	.312	.115	1.000
-6000	.148	.085	.280	-52	.187	.115	.437	-102	.312	.115	1.062
-6015	.188	.090	.520	-53	.187	.115	.500	-103	.312	.115	1.125
-8	.187	.091	.125	-54	.187	.115	.562	-104	.312	.115	1.187
-9	.187	.091	.187	-55	.187	.115	.625	-105	.312	.115	1.250
-9000	.187	.091	.203	-56	.187	.115	.687	-106	.312	.115	1.312
-10	.187	.091	.250	-57	.187	.115	.750	-107	.312	.115	1.375
-11	.187	.091	.312	-58	.187	.115	.812	-108	.312	.115	1.437
-12	.187	.091	.375	-59	.187	.115	.875	-109	.312	.115	1.500
-13	.187	.091	.437	-60	.187	.115	.937	-111	.375	.115	1.062
-14	.187	.091	.500	-61	.187	.115	1.000	-1120	.197	.118	.108
-15	.187	.091	.562	-62	.250	.115	.125	-1112	.187	.120	.312
-16	.187	.091	.625	-63	.250	.115	.187	-1114	.187	.120	.343
-17	.187	.091	.687	-630	.250	.115	.207	-1115	.187	.120	.430
-18	.187	.091	.750	-64	.250	.115	.218	-1116	.187	.120	.437
-19	.187	.091	.812	-65	.250	.115	.250	-1119	.250	.120	.200
-20	.187	.091	.844	-66	.250	.115	.312	-1130	.250	.120	.389
-21	.187	.091	.875	-67	.250	.115	.375	-112	.470	.120	.359
-22	.187	.091	.937	-68	.250	.115	.437	-113	.193	.125	.250
-23	.187	.091	1.000	-69	.250	.115	.500	-114	.216	.125	.135
-2310	.188	.091	.275	-70	.250	.115	.562	-1140	.218	.125	.385
-2300	.188	.091	.330	-71	.250	.115	.625	-1145	.250	.125	.375
-24	.250	.091	.125	-72	.250	.115	.687	-1150	.250	.125	.420
-25	.250	.091	.187	-73	.250	.115	.750	-1155	.250	.125	.823
-26	.250	.091	.250	-74	.250	.115	.812	-116	.280	.125	.296
-27	.250	.091	.312	-75	.250	.115	.875	-117	.296	.125	.094
-28	.250	.091	.375	-76	.250	.115	.937	-1172	.325	.125	.360
-29	.250	.091	.437	-77	.250	.115	1.000	-1175	.375	.125	.437
-30	.250	.091	.500	-78	.250	.115	1.062	-118	.250	.126	.797
-31	.250	.091	.562	-79	.250	.115	1.125	-119	.310	.126	.410
-32	.250	.091	.625	-80	.250	.115	1.187	-120	.203	.130	.281
-33	.250	.091	.687	-81	.250	.115	1.250	-1210	.187	.135	.250
-34	.250	.091	.750	-82	.250	.115	1.312	-122	.220	.138	.656
-35	.250	.091	.812	-83	.250	.115	1.375	-1220	.236	.138	.118
-36	.250	.091	.875	-84	.250	.115	1.437	-1225	.354	.138	.374
-37	.250	.091	.937	-85	.250	.115	1.500	-124	.218	.140	.156
-38	.250	.091	1.000	-86	.251	.115	.531	-1240	.250	.140	.150
-39	.192	.093	.203	-87	.312	.115	.125	-125	.250	.140	.125
-40	.375	.094	.281	-88	.312	.115	.187	-127	.250	.140	.187
-41	.312	.095	.250	-89	.312	.115	.250	-1270	.250	.140	.220
-4200	.187	.096	.156	-90	.312	.115	.312				
-43	.160	.100	.406	-91	.312	.115	.375				

(continued next page)

Tolerances: O.D. & Length +/- .015
I.D. +/- .010

.038 I.D. to .140 I.D.

MOLDED WASHERS and SPACERS (continued)

ROUND SPACERS

Part No. DN205 - (Size Code No.) - (Material Code No.)

Size Code No.	O.D. A	I.D. B	Lgth. L	Size Code No.	O.D. A	I.D. B	Lgth. L	Size Code No.	O.D. A	I.D. B	Lgth. L
-129	.250	.140	.250	-184	.375	.140	.750	-234	.250	.171	.500
-130	.250	.140	.312	-185	.375	.140	.812	-235	.250	.171	.562
-131	.250	.140	.375	-186	.375	.140	.875	-2350	.250	.171	.575
-132	.250	.140	.437	-187	.375	.140	.937	-236	.250	.171	.625
-133	.250	.140	.500	-188	.375	.140	1.000	-237	.250	.171	.687
-1330	.250	.140	.531	-189	.375	.140	1.062	-238	.250	.171	.750
-134	.250	.140	.547	-190	.375	.140	1.125	-239	.250	.171	.812
-135	.250	.140	.562	-191	.375	.140	1.187	-240	.250	.171	.875
-136	.250	.140	.625	-192	.375	.140	1.250	-241	.250	.171	.937
-1360	.250	.140	.640	-193	.375	.140	1.312	-242	.250	.171	1.000
-137	.250	.140	.687	-194	.375	.140	1.375	-243	.312	.171	.125
-138	.250	.140	.750	-195	.375	.140	1.439	-244	.312	.171	.187
-139	.250	.140	.812	-196	.375	.140	1.500	-245	.312	.171	.250
-140	.250	.140	.875	-197	.400	.140	.718	-246	.312	.171	.312
-141	.250	.140	.937	-198	.400	.140	.781	-247	.312	.171	.375
-142	.250	.140	1.000	-199	.500	.140	.125	-248	.312	.171	.437
-143	.250	.140	1.062	-200	.500	.140	.187	-249	.312	.171	.500
-144	.250	.140	1.125	-201	.500	.140	.250	-250	.312	.171	.562
-145	.250	.140	1.187	-202	.500	.140	.312	-251	.312	.171	.625
-146	.250	.140	1.250	-203	.500	.140	.375	-2510	.312	.171	.625
-147	.250	.140	1.312	-204	.500	.140	.437	-252	.312	.171	.687
-148	.250	.140	1.375	-205	.500	.140	.500	-253	.312	.171	.750
-149	.250	.140	1.437	-206	.500	.140	.562	-254	.312	.171	.812
-150	.250	.140	1.500	-207	.500	.140	.625	-255	.312	.171	.875
-151	.312	.140	.125	-208	.500	.140	.687	-256	.312	.171	.937
-152	.312	.140	.187	-209	.500	.140	.750	-257	.312	.171	1.000
-1520	.312	.140	.200	-210	.500	.140	.812	-258	.312	.171	1.062
-153	.312	.140	.250	-211	.500	.140	.875	-259	.312	.171	1.125
-154	.312	.140	.281	-212	.500	.140	.937	-260	.312	.171	1.187
-155	.312	.140	.312	-213	.500	.140	1.000	-261	.312	.171	1.250
-156	.312	.140	.375	-2130	.625	.140	.375	-262	.312	.171	1.312
-157	.312	.140	.437	-214	.250	.141	.281	-263	.312	.171	1.375
-158	.312	.140	.500	-2155	.200	.145	.110	-264	.312	.171	1.437
-159	.312	.140	.562	-216	.200	.145	.171	-265	.312	.171	1.500
-160	.312	.140	.625	-217	.215	.145	.328	-2650	.312	.171	1.875
-161	.312	.140	.687	-2170	.500	.145	.669	-2655	.312	.171	2.437
-162	.312	.140	.750	-220	.250	.147	.297	-266	.375	.171	.125
-163	.312	.140	.812	-2205	.250	.150	.250	-267	.375	.171	.187
-164	.312	.140	.875	-2208	.254	.150	.166	-268	.375	.171	.203
-1640	.312	.140	.937	-221	.393	.151	.250	-269	.375	.171	.250
-165	.312	.140	1.000	-222	.251	.152	.156	-270	.375	.171	.312
-166	.312	.140	1.062	-2220	.250	.155	.160	-271	.375	.171	.375
-167	.312	.140	1.125	-2223	.210	.156	.250	-272	.375	.171	.437
-168	.312	.140	1.187	-2225	.312	.156	.256	-273	.375	.171	.500
-169	.312	.140	1.250	-223	.687	.156	.125	-274	.375	.171	.562
-170	.312	.140	1.312	-2240	.250	.160	.750	-275	.375	.171	.625
-171	.312	.140	1.375	-2245	.625	.160	.312	-276	.375	.171	.687
-172	.312	.140	1.437	-2250	.250	.166	.500	-277	.375	.171	.750
-173	.312	.140	1.500	-2255	.236	.169	.154	-278	.375	.171	.812
-174	.375	.140	.125	-226	.393	.169	.234	-279	.375	.171	.875
-175	.375	.140	.187	-2260	.280	.170	.300	-280	.375	.171	.937
-176	.375	.140	.250	-2263	.500	.170	.255	-281	.375	.171	1.000
-177	.375	.140	.312	-2265	.500	.170	.270	-282	.375	.171	1.062
-1770	.375	.140	.343	-228	.250	.171	.125	-283	.375	.171	1.125
-178	.375	.140	.375	-229	.250	.171	.187	-284	.375	.171	1.187
-179	.375	.140	.437	-231	.250	.171	.312	-285	.375	.171	1.250
-180	.375	.140	.500	-2310	.250	.171	.355	-286	.375	.171	1.312
-181	.375	.140	.562	-232	.250	.171	.375	-287	.375	.171	1.375
-182	.375	.140	.625	-2320	.250	.171	.413	-288	.375	.171	1.437
-183	.375	.140	.687	-230	.250	.171	.250	-289	.375	.171	1.500
-1830	.375	.140	.700	-233	.250	.171	.437				
-1835	.375	.140	.725	-2330	.250	.171	.475				

(continued next page)

Tolerances: O.D. & Length +/- .015
I.D. +/- .010

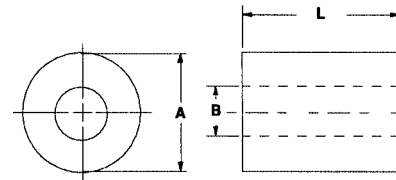
.140 I.D. to .171 I.D.

MOLDED WASHERS and SPACERS (continued)

*Available in the following materials:

Material Code No.	Material Name
-18	Nylon 6/6, (natural)
-78	Nylon 6/6, (black)

*Available in other materials. See materials list in index.
 Other sizes available on request.
 Also, see MACHINED SPACERS starting on page 196-202.



ROUND SPACERS

Part No. DN205 - (Size Code No.) - (Material Code No.)

Size Code No.	O.D. A	I.D. B	Lgth. L	Size Code No.	O.D. A	I.D. B	Lgth. L	Size Code No.	O.D. A	I.D. B	Lgth. L
-2890	.437	.171	.655	-3370	.312	.194	1.155	-3832	.343	.198	.281
-290	.500	.171	.125	-338	.312	.194	1.187	-383	.260	.200	.594
-291	.500	.171	.187	-339	.312	.194	1.250	-3830	.750	.200	1.000
-292	.500	.171	.250	-340	.312	.194	1.312	-385	.375	.203	.109
-293	.500	.171	.312	-341	.312	.194	1.375	-386	.375	.203	.265
-294	.500	.171	.375	-3410	.312	.194	1.405	-387	.606	.203	.625
-295	.500	.171	.437	-342	.312	.194	1.437	-389	.825	.203	.625
-296	.500	.171	.500	-343	.312	.194	1.500	-3892	.250	.205	.230
-297	.500	.171	.562	-343	.370	.194	.418	-3894	.312	.205	.160
-298	.500	.171	.625	-344	.375	.194	.125	-3890	.620	.209	.187
-299	.500	.171	.687	-345	.375	.194	.187	-3896	.500	.213	.250
-300	.500	.171	.750	-346	.375	.194	.250	-3898	.320	.215	.220
-301	.500	.171	.812	-347	.375	.194	.312	-3902	.312	.218	.812
-302	.500	.171	.875	-348	.375	.194	.375	-3900	.375	.218	.437
-303	.500	.171	.937	-349	.375	.194	.437	-3910	.375	.219	.156
-304	.500	.171	1.000	-350	.375	.194	.500	-3913	.375	.219	.171
-3040	.354	.172	.531	-351	.375	.194	.562	-3915	.375	.219	.203
-3042	.245	.175	.156	-352	.375	.194	.625	-392	.375	.219	.250
-3046	.245	.175	.166	-353	.375	.194	.687	-393	.500	.219	.125
-3047	.312	.175	.154	-354	.375	.194	.750	-394	.500	.219	.187
-3043	.376	.175	.150	-355	.375	.194	.812	-395	.500	.219	.250
-3046	.400	.180	.140	-356	.375	.194	.875	-396	.500	.219	.312
-3048	.427	.182	.734	-357	.375	.194	.937	-397	.500	.219	.375
-3049	.275	.185	.090	-358	.375	.194	1.000	-398	.500	.219	.437
-308	.312	.187	.215	-359	.375	.194	1.062	-399	.500	.219	.500
-3082	.313	.187	.171	-360	.375	.194	1.125	-400	.500	.219	.562
-3090	.990	.187	.250	-361	.375	.194	1.187	-401	.500	.219	.625
-3122	.250	.188	.188	-362	.375	.194	1.250	-4010	.500	.219	.649
-3124	.316	.188	.203	-363	.375	.194	1.312	-402	.500	.219	.687
-3126	.313	.189	.296	-364	.375	.194	1.375	-403	.500	.219	.750
-315	.463	.190	.312	-365	.375	.194	1.437	-404	.500	.219	.812
-316	.475	.191	.328	-366	.375	.194	1.500	-405	.500	.219	.875
-317	.625	.191	.250	-367	.500	.194	.125	-406	.500	.219	.937
-3185	.375	.192	.187	-368	.500	.194	.187	-407	.500	.219	1.000
-321	.312	.194	.125	-369	.500	.194	.250	-4070	.533	.219	.360
-322	.312	.194	.187	-370	.500	.194	.312	-408	.375	.220	.375
-323	.312	.194	.250	-371	.500	.194	.375	-4081	.500	.220	.135
-324	.312	.194	.312	-372	.500	.194	.406	-4080	.748	.220	.252
-325	.312	.194	.375	-373	.500	.194	.437	-4082	.313	.222	.238
-326	.312	.194	.437	-374	.500	.194	.500	-4086	.284	.224	.400
-327	.312	.194	.500	-375	.500	.194	.562	-391	.312	.225	.437
-3270	.312	.194	.530	-376	.500	.194	.625	-4087	.375	.225	.250
-328	.312	.194	.562	-377	.500	.194	.687	-4083	.312	.228	.260
-329	.312	.194	.625	-378	.500	.194	.750	-4085	.375	.230	.925
-330	.312	.194	.687	-379	.500	.194	.812	-4088	.354	.236	.224
-331	.312	.194	.750	-380	.500	.194	.875	-4089	.500	.244	.295
-332	.312	.194	.812	-381	.500	.194	.937	-4090	.555	.245	.562
-333	.312	.194	.875	-382	.500	.194	1.000	-4092	.750	.245	.361
-334	.312	.194	.937	-3824	.250	.195	.195	-4094	.312	.246	.250
-334	.312	.194	.937	-3827	.275	.195	.400	-4096	.312	.246	.495
-335	.312	.194	1.000	-3820	.312	.195	.214	-4098	.374	.248	.406
-336	.312	.194	1.062	-3828	.312	.195	.355	-4099	.946	.248	.500
-337	.312	.194	1.125	-3825	.313	.195	.385				
				-3822	.500	.195	.451				

(continued next page)

Tolerances: O.D. & Length +/- .015
 I.D. +/- .010

.171 I.D. to .248 I.D.

MOLDED WASHERS and SPACERS (continued)

ROUND SPACERS

Part No. DN205 - (Size Code No.) - (Material Code No.)

Size Code No.	O.D. A	I.D. B	Lgth. L	Size Code No.	O.D. A	I.D. B	Lgth. L	Size Code No.	O.D. A	I.D. B	Lgth. L
-4095	.501	.249	.390	-424	.500	.260	.125	-4652	.406	.311	.591
-4100	.375	.250	.593	-425	.500	.260	.187	-465	.623	.311	.812
-4102	.380	.250	.440	-427	.500	.260	.250	-4656	.437	.312	.350
-4104	.437	.250	.591	-435	.500	.260	.750	-467	.500	.312	.156
-4106	.437	.250	3.940	-436	.500	.260	.812	-4670	.500	.312	1.312
-4108	.500	.250	2.125	-437	.500	.260	.875	-4672	.589	.312	.310
-4110	.535	.250	.610	-4430	.500	.260	1.375	-4674	.625	.312	.500
-4116	.602	.250	.622	-441	.500	.260	1.625	-4676	.750	.312	.250
-413	.610	.250	.375	-444	.625	.260	.250	-4678	.750	.312	.562
-4133	.625	.250	.650	-4423	.687	.260	.457	-4679	.750	.312	.938
-414	.740	.250	.250	-4420	.750	.260	.125	-470	.812	.312	.125
-4140	.745	.250	.375	-4425	.750	.260	.375	-4700	1.000	.312	.250
-4142	.750	.250	.500	-4429	.750	.260	.500	-4713	1.240	.312	.250
-4143	.750	.250	.500	-4432	.750	.260	.562	-4715	.612	.313	.687
-4144	.750	.250	.878	-4422	.750	.260	.750	-4724	.468	.314	.230
-4146	.866	.250	.394	-4434	.750	.260	1.000	-473	.590	.314	.359
-4160	1.000	.250	.125	-4436	1.000	.260	.375	-4730	.625	.315	.312
-4163	1.000	.250	.187	-445	.370	.265	.156	-4732	.750	.315	.187
-4162	1.000	.250	.225	-446	.375	.265	.250	-4733	.750	.315	.312
-4164	1.000	.250	.250	-447	.375	.265	.375	-474	.360	.316	.250
-4167	1.000	.250	.437	-448	.375	.265	.500	-4740	.500	.316	.234
-4166	1.180	.250	.217	-449	.375	.265	.750	-4743	.500	.316	.500
-4165	1.860	.250	1.000	-450	.375	.265	.875	-4655	.437	.318	.281
-417	.389	.251	.125	-451	.375	.265	1.000	-475	.567	.318	.547
-4170	.875	.251	.625	-4514	.406	.265	1.000	-4750	.437	.318	.150
-4172	.360	.252	.425	-4518	.406	.265	.562	-4752	.590	.319	.655
-4175	.375	.252	.187	-4510	.406	.265	.625	-4755	.380	.320	.382
-418	.375	.252	.375	-452	.406	.265	.750	-4753	.395	.320	.591
-4178	.375	.252	.820	-4522	.500	.265	.156	-4756	.415	.320	.640
-4180	.460	.252	.562	-4524	.500	.265	.200	-4758	.486	.320	.375
-4181	.375	.254	.453	-4520	.730	.265	.295	-4761	.500	.320	.270
-4182	.385	.254	.245	-4526	.875	.265	.156	-476	.510	.320	.875
-4183	.355	.255	.130	-4528	.875	.265	.250	-4764	.750	.320	.500
-4130	.621	.255	.652	-4532	.875	.265	.375	-4763	.750	.320	.750
-4184	.375	.255	.380	-4530	.875	.265	.750	-4766	.750	.320	1.000
-4185	.375	.255	.700	-4531	1.250	.265	.750	-477	.570	.320	.547
-4186	.750	.255	.290	-4534	.750	.266	.312	-4766	.437	.323	.156
-4187	1.250	.256	.220	-453	.406	.267	.500	-4760	.620	.323	.187
-4195	.433	.256	.531	-454	.406	.269	.250	-4783	.750	.323	.250
-4182	.355	.254	.553	-455	.625	.270	.218	-4782	.438	.325	.422
-420	.610	.256	1.500	-4552	.340	.280	.310	-480	.450	.325	.421
-4205	.375	.257	.250	-4554	.340	.280	.500	-4786	.480	.325	.250
-4210	.375	.257	1.250	-4555	.406	.280	.375	-4785	.480	.325	1.250
-4250	.480	.257	.177	-4557	.340	.280	.500	-4788	.615	.325	.813
-423	.490	.257	.375	-4570	.560	.280	.500	-4810	.875	.325	2.000
-426	.500	.257	.234	-457	.625	.280	.437	-4814	.640	.327	.560
-428	.500	.257	.312	-458	.648	.280	.359	-4815	.750	.327	.188
-4280	.500	.257	.359	-4580	.750	.280	.440	-481	.500	.328	1.000
-429	.500	.257	.375	-4582	.875	.280	.500	-4812	.615	.328	.438
-4290	.500	.257	.406	-4584	.500	.281	.375	-4816	.625	.328	.250
-430	.625	.257	.125	-459	.500	.281	.812	-4818	1.000	.328	1.000
-431	.500	.257	.500	-4592	.563	.281	.375	-4813	.565	.330	.560
-432	.500	.257	.562	-460	.613	.281	.500	-4820	.875	.330	.375
-4320	.500	.257	.437	-461	.615	.281	.812	-4822	.500	.335	.209
-433	.500	.257	.625	-463	1.120	.281	.437	-4828	.700	.335	.866
-434	.500	.257	.687	-4633	.500	.285	.630	-4823	.625	.342	.375
-438	.500	.257	.937	-4634	.430	.285	.400	-483	.484	.343	.187
-439	.500	.257	1.000	-4635	.500	.285	.930	-4833	1.000	.343	.125
-4415	.750	.257	1.000	-464	.985	.285	.250	-4835	.500	.344	.812
-4418	.825	.257	.370	-4642	.372	.288	.969	-4836	.750	.344	.250
-442	.750	.258	.437	-4643	1.240	.307	.500				
-4419	.305	.260	.179	-4645	.740	.310	.437				

(continued next page)

Tolerances: O.D. & Length +/- .015
I.D. +/- .010

.249 I.D. to .344 I.D.

MOLDED WASHERS and SPACERS (continued)

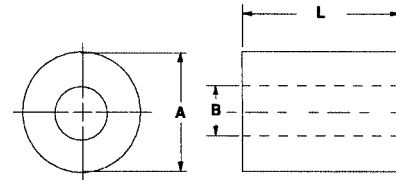
*Available in the following materials:

Material Code No.	Material Name
-18	Nylon 6/6, (natural)
-78	Nylon 6/6, (black)

*Available in other materials. See materials list in index.
 Other sizes available on request.
 Also, see MACHINED SPACERS starting on page 196-202.

ROUND SPACERS

Part No. DN205 - (Size Code No.) - (Material Code No.)



Size Code No.	O.D. A	I.D. B	Lgth. L	Size Code No.	O.D. A	I.D. B	Lgth. L	Size Code No.	O.D. A	I.D. B	Lgth. L
-4838	.750	.344	.520	-5022	.625	.386	.738	-5197	1.250	.510	.312
-4839	.990	.344	.312	-5026	.745	.387	.187	-5200	.720	.515	.490
-4837	1.000	.344	.187	-5028	.510	.390	.250	-5205	.750	.515	.340
-4840	1.000	.344	.435	-5033	.625	.390	.250	-520	.656	.516	.500
-484	.480	.345	.187	-4973	.680	.390	.625	-5200	1.000	.517	.312
-485	.620	.350	.187	-5034	.740	.390	1.000	-5205	1.000	.517	.375
-4850	.630	.350	.200	-5036	.975	.390	1.180	-5210	1.000	.517	.687
-4852	.670	.350	.200	-5038	.720	.392	.230	-5215	.635	.520	.500
-4853	.750	.350	.685	-5030	.472	.394	.787	-5220	.998	.523	.453
-4856	.980	.352	.500	-5032	.760	.394	.910	-521	.803	.520	.500
-4860	.375	.354	.473	-5034	.744	.397	.371	-52125	1.460	.521	.500
-486	.984	.366	.375	-5035	.460	.400	.440	-524	.718	.526	.218
-4865	.500	.368	.470	-5036	.755	.400	.290	-525	.718	.526	.281
-487	.750	.370	.343	-5037	1.250	.400	.625	-5250	.870	.527	.875
-4870	.500	.375	.225	-5038	.760	.401	.600	-5254	1.000	.530	.500
-4871	.500	.375	.380	-5043	.750	.403	.312	-5258	.754	.531	.451
-488	.500	.375	.437	-5040	.812	.403	.250	-528	.870	.531	.391
-489	.500	.375	.625	-5042	.812	.403	.710	-5280	.835	.540	.188
-4901	.500	.375	.635	-5044	.750	.406	.562	-5282	.680	.600	.560
-490	.500	.375	.687	-5045	1.000	.406	.437	-5283	.841	.605	.600
-491	.562	.375	.500	-5046	.625	.412	.155	-5284	.870	.610	.500
-4910	.625	.375	.082	-5047	.875	.421	.325	-5286	1.750	.625	.250
-4912	.625	.375	.375	-505	.635	.425	.875	-5288	.913	.635	.641
-4914	.625	.375	.462	-5050	.634	.434	.380	-5333	1.250	.642	.082
-4916	.750	.375	.375	-5051	.770	.434	.377	-5335	1.000	.643	.500
-4918	.875	.375	.312	-5053	.625	.435	.250	-5338	1.000	.650	.373
-4920	1.000	.375	.800	-5056	.567	.437	.406	-535	1.375	.656	.125
-492	.986	.375	.250	-5057	.885	.438	.370	-5353	1.457	.669	.315
-4923	1.000	.375	.625	-5059	.515	.445	.380	-5358	1.062	.680	.200
-4943	.630	.378	.500	-5063	.625	.450	.625	-538	1.055	.740	.187
-4945	.560	.379	.315	-507	.625	.450	.875	-540	1.000	.755	.203
-495	.560	.379	.375	-5070	1.000	.450	.219	-5400	1.239	.761	.562
-497	.500	.380	.421	-5076	1.000	.453	.219	-5403	1.000	.765	.562
-4970	.625	.380	.750	-508	.750	.460	.250	-5405	.907	.780	.315
-4972	.625	.380	1.250	-5082	.752	.480	.226	-5407	.917	.785	.750
-4975	.750	.380	.472	-5083	.627	.484	.467	-541	1.057	.812	.125
-4986	1.250	.380	.380	-509	.750	.490	.375	-5410	1.188	.813	.250
-4990	.465	.382	.282	-510	.618	.500	.484	-5415	1.250	.875	.562
-4992	.500	.382	.312	-5103	.625	.500	.312	-5423	1.000	.915	.250
-4994	.500	.382	.625	-5104	.625	.500	1.000	-543	1.750	.928	.281
-4996	.518	.382	.280	-5105	.630	.500	1.250	-5430	1.080	.950	.875
-4984	.500	.383	.500	-512	.987	.500	.375	-5433	1.500	1.000	.500
-4982	.750	.383	.437	-5120	.780	.501	.205	-5435	1.500	1.020	.500
-499	.505	.385	.156	-5143	.620	.504	.625	-5436	1.120	1.015	.375
-500	.500	.385	1.000	-514	.620	.504	.812	-5438	1.320	1.031	.562
-5003	.615	.385	.187	-5140	.620	.504	.812	-5453	1.262	1.043	.950
-5004	.625	.385	.187	-5144	1.240	.505	.500	-547	1.312	1.078	.750
-5005	.635	.385	.230	-516	.668	.506	.937	-549	1.500	1.187	.359
-5006	.745	.385	.312	-517	.620	.507	1.687	-5492	1.625	1.388	.093
-5007	.750	.385	.203	-518	.620	.507	.500	-5496	2.013	1.420	.350
-5008	1.000	.385	.340	-519	.775	.507	.250	-5498	2.130	1.630	.130
-5013	1.000	.385	.375	-5190	.984	.509	.984	-550	2.135	1.760	.125
-502	.625	.386	.609	-5193	.750	.510	.188				
-5020	.625	.386	.625	-5194	.750	.510	.375				

Tolerances: O.D. & Length +/- .015
 I.D. +/- .010

.344 I.D. to 1.760 I.D.

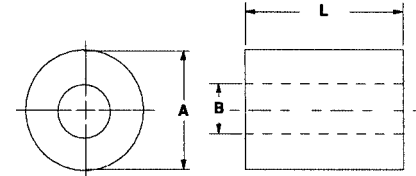
MOLDED WASHERS and SPACERS (continued)

MOLDED NYLON SPACERS

*Available in the following materials:

Material Code No. Material Name
 -78 Nylon 6/6, (black)

*Available in other materials. See materials list in index.
 Other sizes available on request.
 Also, see MACHINED SPACERS starting on page 196-202.



ROUND METRIC SPACERS

Part No. DN242 - (Size Code No.) - (Material Code No.)

Size Code No.	O.D. A	I.D. B	Lgth. L	Size Code No.	O.D. A	I.D. B	Lgth. L	Size Code No.	O.D. A	I.D. B	Lgth. L
-1	4 mm	2.6 mm	2 mm	-44	6 mm	3.6 mm	3 mm	-87	12 mm	8.3 mm	10 mm
-2	4 mm	2.6 mm	3 mm	-45	6 mm	3.6 mm	5 mm	-88	12 mm	8.3 mm	15 mm
-3	4 mm	2.6 mm	5 mm	-46	6 mm	3.6 mm	7.5 mm	-89	12 mm	8.3 mm	20 mm
-4	4 mm	2.6 mm	7.5 mm	-47	6 mm	3.6 mm	10 mm	-90	12 mm	8.3 mm	25 mm
-5	4 mm	2.6 mm	10 mm	-48	6 mm	3.6 mm	15 mm	-91	12 mm	8.3 mm	30 mm
-6	4 mm	2.6 mm	15 mm	-49	6 mm	3.6 mm	20 mm	-92	18 mm	8.3 mm	3 mm
-7	4 mm	2.6 mm	20 mm	-50	6 mm	3.6 mm	25 mm	-93	18 mm	8.3 mm	5 mm
-8	4 mm	2.6 mm	25 mm	-51	6 mm	3.6 mm	30 mm	-94	18 mm	8.3 mm	7.5 mm
-9	4 mm	2.6 mm	30 mm	-52	8 mm	4.3 mm	3 mm	-95	18 mm	8.3 mm	10 mm
-10	5 mm	2.6 mm	2 mm	-53	8 mm	4.3 mm	5 mm	-96	18 mm	8.3 mm	15 mm
-11	5 mm	2.6 mm	3 mm	-54	8 mm	4.3 mm	7.5 mm	-97	18 mm	8.3 mm	20 mm
-12	5 mm	2.6 mm	5 mm	-55	8 mm	4.3 mm	10 mm	-98	18 mm	8.3 mm	25 mm
-13	5 mm	2.6 mm	7.5 mm	-56	8 mm	4.3 mm	15 mm	-99	18 mm	8.3 mm	30 mm
-14	5 mm	2.6 mm	10 mm	-57	8 mm	4.3 mm	20 mm	-100	15 mm	10.4 mm	3 mm
-15	5 mm	2.6 mm	15 mm	-58	8 mm	4.3 mm	25 mm	-101	15 mm	10.4 mm	5 mm
-16	5 mm	2.6 mm	20 mm	-59	8 mm	4.3 mm	30 mm	-102	15 mm	10.4 mm	7.5 mm
-17	5 mm	2.6 mm	25 mm	-60	10 mm	5.3 mm	3 mm	-103	15 mm	10.4 mm	10 mm
-18	5 mm	2.6 mm	30 mm	-61	10 mm	5.3 mm	5 mm	-104	15 mm	10.4 mm	15 mm
-19	5 mm	3.2 mm	2 mm	-62	10 mm	5.3 mm	7.5 mm	-105	15 mm	10.4 mm	20 mm
-20	5 mm	3.2 mm	3 mm	-63	10 mm	5.3 mm	10 mm	-106	15 mm	10.4 mm	25 mm
-21	5 mm	3.2 mm	5 mm	-64	10 mm	5.3 mm	15 mm	-107	15 mm	10.4 mm	30 mm
-22	5 mm	3.2 mm	7.5 mm	-65	10 mm	5.3 mm	20 mm	-108	22 mm	10.4 mm	5 mm
-23	5 mm	3.2 mm	10 mm	-66	10 mm	5.3 mm	25 mm	-109	22 mm	10.4 mm	10 mm
-24	5 mm	3.2 mm	15 mm	-67	10 mm	5.3 mm	30 mm	-110	22 mm	10.4 mm	15 mm
-25	5 mm	3.2 mm	20 mm	-68	10 mm	6.3 mm	3 mm	-111	22 mm	10.4 mm	20 mm
-26	5 mm	3.2 mm	25 mm	-69	10 mm	6.3 mm	5 mm	-112	22 mm	10.4 mm	25 mm
-27	5 mm	3.2 mm	30 mm	-70	10 mm	6.3 mm	7.5 mm	-113	22 mm	10.4 mm	30 mm
-28	6 mm	3.2 mm	3 mm	-71	10 mm	6.3 mm	10 mm	-118	18 mm	13.3 mm	3 mm
-29	6 mm	3.2 mm	5 mm	-72	10 mm	6.3 mm	15 mm	-119	18 mm	13.3 mm	5 mm
-30	6 mm	3.2 mm	7.5 mm	-73	10 mm	6.3 mm	20 mm	-120	18 mm	13.3 mm	7.5 mm
-31	6 mm	3.2 mm	10 mm	-74	10 mm	6.3 mm	25 mm	-121	18 mm	13.3 mm	10 mm
-32	6 mm	3.2 mm	15 mm	-75	10 mm	6.3 mm	30 mm	-122	18 mm	13.3 mm	15 mm
-33	6 mm	3.2 mm	20 mm	-76	15 mm	6.5 mm	3 mm	-123	18 mm	13.3 mm	20 mm
-34	6 mm	3.2 mm	25 mm	-77	15 mm	6.5 mm	5 mm	-124	18 mm	13.3 mm	25 mm
-35	6 mm	3.2 mm	30 mm	-78	15 mm	6.5 mm	7.5 mm	-125	18 mm	13.3 mm	30 mm
-36	8 mm	3.2 mm	3 mm	-79	15 mm	6.5 mm	10 mm	-126	25 mm	13.3 mm	5 mm
-37	8 mm	3.2 mm	5 mm	-80	15 mm	6.5 mm	15 mm	-127	25 mm	13.3 mm	10 mm
-38	8 mm	3.2 mm	7.5 mm	-81	15 mm	6.5 mm	20 mm	-128	25 mm	13.3 mm	15 mm
-39	8 mm	3.2 mm	10 mm	-82	15 mm	6.5 mm	25 mm	-129	25 mm	13.3 mm	20 mm
-40	8 mm	3.2 mm	15 mm	-83	15 mm	6.5 mm	30 mm	-130	25 mm	13.3 mm	25 mm
-41	8 mm	3.2 mm	20 mm	-84	12 mm	8.3 mm	3 mm	-131	25 mm	13.3 mm	30 mm
-42	8 mm	3.2 mm	25 mm	-85	12 mm	8.3 mm	5 mm	-132	10 mm	6.3 mm	28 mm
-43	8 mm	3.2 mm	30 mm	-86	12 mm	8.3 mm	7.5 mm				

Tolerances: O.D. & Length +/- .38mm
 I.D. +/- .26mm

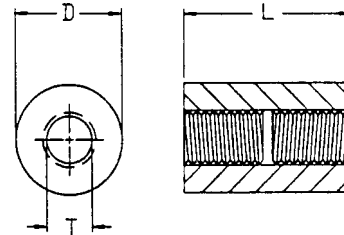
2.6 mm I.D. to 6.3 mm I.D.

MOLDED WASHERS and SPACERS (continued)

MOLDED NYLON SPACERS

*Available in the following materials:

Material Code No.	Material Name
-18	Nylon 6/6, (natural)
-78	Nylon 6/6, (black)



TAPPED ROUND SPACERS

Part No. DN207 - (Size Code No.) - (Material Code No.)

Size Code No.	T Thread	L Lgth.	D Dia.	Size Code No.	T Thread	L Lgth.	D Dia.	Size Code No.	T Thread	L Lgth.	D Dia.
-102	2-56	1/4	1/4	-24	6-32**	1/2	1/4	-51	8-32***	1/2	5/16
-101	2-56	3/8	3/16	-25	6-32**	9/16	1/4	-52	8-32***	5/8	5/16
-1	2-56	7/16	3/16	-26	6-32**	5/8	1/4	-53	8-32***	3/4	5/16
-100	2-56	1/2	3/16	-27	6-32**	3/4	1/4	-54	8-32***	7/8	5/16
-105	4-40	5/32	3/16	-28	6-32**	15/16	1/4	-55	8-32***	1	5/16
-2	4-40*	1/4	1/4	-29	6-32**	7/8	1/4	-56	10-32****	1/4	3/8
-3	4-40*	5/16	1/4	-30	6-32**	1	1/4	-57	10-32****	3/8	3/8
-4	4-40*	3/8	1/4	-31	6-32**	1 1/2	1/4	-58	10-32****	1/2	3/8
-5	4-40*	1/2	1/4	-32	6-32	3/16	3/16	-59	10-32****	5/8	3/8
-6	4-40*	5/8	1/4	-33	6/32	1/4	3/16	-60	10-32****	3/4	3/8
-7	4-40*	3/4	1/4	-34	6-32	5/16	3/16	-61	10-32****	7/8	3/8
-8	4-40*	7/8	1/4	-35	6-32	3/8	3/16	-62	10-32****	1	3/8
-9	4-40*	1	1/4	-36	6-32	7/16	3/16	-63	10-32****	1/4	1/2
-11	4-40	3/16	3/16	-37	6-32	1/2	3/16	-64	10-32****	3/8	1/2
-12	4-40	1/4	3/16	-38	6-32	5/8	3/16	-65	10-32****	1/2	1/2
-120	4-40*	17/64	3/16	-39	6-32	3/4	3/16	-66	10-32****	5/8	1/2
-13	4-40	5/16	3/16	-40	6-32	7/8	3/16	-67	10-32****	3/4	1/2
-14	4-40	3/8	3/16	-41	6-32	1	3/16	-68	10-32****	7/8	1/2
-15	4-40	7/16	3/16	-42	8-32***	1/4	1/4	-69	10-32****	1	1/2
-16	4-40	1/2	3/16	-43	8-32***	3/8	1/4	-70	1/4-20	1/4	1/2
-17	4-40	5/8	3/16	-44	8-32***	1/2	1/4	-71	1/4-20	3/8	1/2
-18	4-40	3/4	3/16	-45	8-32***	5/8	1/4	-72	1/4-20	1/2	1/2
-19	4-40	7/8	3/16	-46	8-32***	3/4	1/4	-73	1/4-20	5/8	1/2
-20	4-40	1	3/16	-47	8-32***	7/8	1/4	-74	1/4-20	3/4	1/2
-21	6-32**	1/4	1/4	-48	8-32***	1	1/4	-75	1/4-20	7/8	1/2
-22	6-32**	5/16	1/4	-49	8-32***	1/4	5/16	-76	1/4-20	1	1/2
-23	6-32**	3/8	1/4	-50	8-32***	3/8	5/16				

Lengths over 3/4" are tapped 3/8" on either end.

Tolerance on all dimensions: +/- .015

Note:

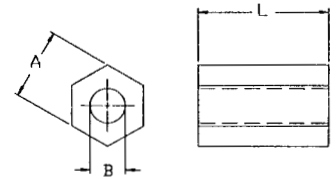
- 4-40* available in M3 thread.
- 6-32** available in M3.5 thread.
- 8-32*** available in M4 thread.
- 10-32**** available in M5 thread.

MOLDED WASHERS and SPACERS (continued)

*Available in the following materials:

Material Code No.	Material Name
-18	Nylon 6/6, (natural)
-78	Nylon 6/6, (black)

*Available in other materials. See materials list in index.
Other sizes available on request.



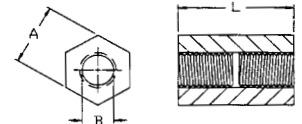
HEX SPACERS

Part No. EN195 - (Size Code No.) - (Material Code No.)

Size Code No.	B I.D.	L Length	A AF	Size Code No.	B I.D.	L Length	A AF	Size Code No.	B I.D.	L Length	A AF
-100	.072	5/16	3/16	-14	.091	5/8	1/4	-28	.115	5/8	1/4
-101	.072	3/8	3/16	-15	.091	3/4	1/4	-29	.115	3/4	1/4
-1010	.072	7/16	3/16	-16	.091	7/8	1/4	-30	.115	7/8	1/4
-102	.075	9/16	3/16	-17	.091	1	1/4	-31	.115	1	1/4
-1	.091	1/4	3/16	-170	.091	1 1/2	1/4	-32	.115	1 1/4	1/4
-2	.091	3/8	3/16	-174	.094	.826	1/4	-33	.115	1/2	5/16
-3	.091	7/16	3/16	-176	.110	3/4	3/4	-330	.115	7/8	5/16
-4	.091	1/2	3/16	-178	.111	9/16	1/4	-34	.115	1 1/8	5/16
-5	.091	9/16	3/16	-18	.115	1/4	3/16	-340	.115	3/4	3/8
-6	.091	5/8	3/16	-19	.115	3/8	3/16	-35	.115	1/4	1/4
-7	.091	3/4	3/16	-20	.115	1/2	3/16	-36	.140	3/8	1/4
-8	.091	7/8	3/16	-21	.115	5/8	3/16	-360	.140	1/4	1/4
-9	.091	1	3/16	-22	.115	3/4	3/16	-37	.140	1/2	1/4
-10	.091	1/4	1/4	-23	.115	7/8	3/16	-38	.140	5/8	1/4
-11	.091	5/16	1/4	-24	.115	1	3/16	-39	.140	3/4	1/4
-12	.091	3/8	1/4	-240	.115	3/16	1/4	-40	.140	7/8	1/4
-120	.091	7/16	1/4	-25	.115	1/4	1/4	-43	.195	1/2	3/8
-13	.091	1/2	1/4	-26	.115	3/8	1/4	-48	.225	7/32	5/16
-130	.091	9/16	1/4	-27	.115	1/2	1/4				

Self-threading, use with tapping screws.

Tolerance on all dimensions: +/- .015



HEX TAPPED SPACERS

Part No. EN194 - (Size Code No.) - (Material Code No.)

Size Code No.	B I.D.	L Length	A AF	Size Code No.	B I.D.	L Length	A AF	Size Code No.	B I.D.	L Length	A AF
-100	2-56	5/16	3/16	-15	4-40*	5/8	1/4	-30	6-32**	3/4	1/4
-1010	2-56	7/16	3/16	-16	4-40*	3/4	1/4	-31	6-32**	7/8	1/4
-101	2-56	3/8	3/16	-17	4-40*	7/8	1/4	-32	6-32**	1	1/4
-102	2-56	9/16	3/16	-175	4-40*	.826	1/4	-33	6-32**	1 1/4	1/4
-1	4-40*	1/4	3/16	-18	4-40*	1	1/4	-330	6-32**	1 1/2	1/4
-2	4-40*	3/8	3/16	-180	4-40*	1 1/2	1/4	-34	6-32**	1/2	5/16
-3	4-40*	7/16	3/16	-19	6-32**	1/4	3/16	-340	6-32**	7/8	5/16
-4	4-40*	1/2	3/16	-20	6-32**	3/8	3/16	-35	6-32**	1 1/8	5/16
-5	4-40*	9/16	3/16	-21	6-32**	1/2	3/16	-350	6-32**	3/4	3/8
-6	4-40*	5/8	3/16	-22	6-32**	5/8	3/16	-351	6-32**	1 5/16	3/8
-7	4-40*	3/4	3/16	-23	6-32**	3/4	3/16	-36	8-32***	1/4	1/4
-8	4-40*	7/8	3/16	-24	6-32**	7/8	3/16	-37	8-32***	3/8	1/4
-9	4-40*	1	3/16	-25	6-32**	1	3/16	-38	8-32***	1/2	1/4
-10	4-40*	1/4	1/4	-250	6-32**	3/16	1/4	-39	8-32***	5/8	1/4
-11	4-40*	5/16	1/4	-26	6-32**	1/4	1/4	-40	8-32***	3/4	1/4
-12	4-40*	3/8	1/4	-27	6-32**	3/8	1/4	-41	8-32***	7/8	1/4
-120	4-40*	7/16	1/4	-28	6-32**	1/2	1/4	-42	8-32***	1	1/4
-13	4-40*	1/2	1/4	-280	6-32**	7/16	1/4	-420	1/4-20	7/32	5/16
-14	4-40*	9/16	1/4	-29	6-32**	5/8	1/4	-421	1/4-20	1/2	3/8

Lengths over 3/4" are tapped 3/8" on either end. -330 has no thru hole.

Tolerance on all dimensions: +/- .015

Note: 4-40* available in M3 thread, 6-32** available in M3.5 thread, 8-32*** available in M4 thread.

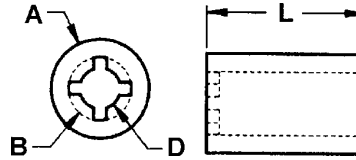
MOLDED WASHERS and SPACERS (continued)

Material Code No. Material Name

- 18 Nylon 6/6, (natural)
- 78 Nylon 6/6, (black)

RETAINING SPACERS

Part No. DN300 - (Size Code No.) - (Material Code No.)

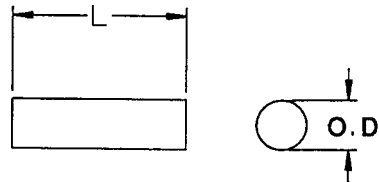


Size Code No.	A	B	D	L	Size Code No.	A	B	D	L	Size Code No.	A	B	D	L
-1	.250	.115	.078	.125	-31	.3125	.198	.128	.125	-61	.500	.277	.177	.187
-2	.250	.115	.078	.187	-32	.3125	.198	.128	.187	-62	.500	.277	.177	.250
-3	.250	.115	.078	.250	-33	.3125	.198	.128	.250	-63	.500	.277	.177	.312
-4	.250	.115	.078	.312	-34	.3125	.198	.128	.312	-64	.500	.277	.177	.375
-5	.250	.115	.078	.375	-35	.3125	.198	.128	.375	-65	.500	.277	.177	.437
-6	.250	.115	.078	.437	-36	.3125	.198	.128	.437	-66	.500	.277	.177	.500
-7	.250	.115	.078	.500	-37	.3125	.198	.128	.500	-67	.500	.277	.177	.562
-8	.250	.115	.078	.562	-38	.3125	.198	.128	.562	-68	.500	.277	.177	.625
-9	.250	.115	.078	.625	-39	.3125	.198	.128	.625	-69	.500	.277	.177	.687
-10	.250	.115	.078	.687	-40	.3125	.198	.128	.687	-70	.500	.277	.177	.750
-11	.250	.115	.078	.750	-41	.3125	.198	.128	.750	-71	.500	.277	.177	.812
-12	.250	.115	.078	.812	-42	.3125	.198	.128	.812	-72	.500	.277	.177	.875
-13	.250	.115	.078	.875	-43	.3125	.198	.128	.875	-73	.500	.277	.177	.937
-14	.250	.115	.078	.937	-44	.3125	.198	.128	.937	-74	.500	.277	.177	1.000
-15	.250	.115	.078	1.000	-45	.3125	.198	.128	1.000	-75	.500	.375	.234	.125
-16	.250	.156	.102	.125	-46	.375	.240	.152	.125	-76	.500	.375	.234	.187
-17	.250	.156	.102	.187	-47	.375	.240	.152	.250	-77	.500	.375	.234	.250
-18	.250	.156	.102	.250	-48	.375	.240	.152	.312	-78	.500	.375	.234	.312
-19	.250	.156	.102	.312	-49	.375	.240	.152	.375	-79	.500	.375	.234	.375
-20	.250	.156	.102	.375	-50	.375	.240	.152	.437	-80	.500	.375	.234	.437
-21	.250	.156	.102	.437	-51	.375	.240	.152	.500	-81	.500	.375	.234	.500
-22	.250	.156	.102	.500	-52	.375	.240	.152	.562	-82	.500	.375	.234	.562
-23	.250	.156	.102	.562	-53	.375	.240	.152	.625	-83	.500	.375	.234	.625
-24	.250	.156	.102	.625	-54	.375	.240	.152	.687	-84	.500	.375	.234	.687
-25	.250	.156	.102	.687	-55	.375	.240	.152	.750	-85	.500	.375	.234	.750
-26	.250	.156	.102	.750	-56	.375	.240	.152	.812	-86	.500	.375	.234	.812
-27	.250	.156	.102	.812	-57	.375	.240	.152	.875	-87	.500	.375	.234	.875
-28	.250	.156	.102	.875	-58	.375	.240	.152	.937	-88	.500	.375	.234	.937
-29	.250	.156	.102	.937	-59	.375	.240	.152	1.000	-89	.500	.375	.234	1.000
-30	.250	.156	.102	1.000	-60	.500	.277	.177	.125					

MOLDED DOWELS

STANDARD MATERIAL: -62 Acetal

Part No. PN105 - (Size Code No.) -62



Size Code No.	O.D.	Length	Size Code No.	O.D.	Length	Size Code No.	O.D.	Length	Size Code No.	O.D.	Length
-1	.047	1/8	-10	.093	1/4	-19	.187	1/4	-27	.250	1/2
-2	.047	1/4	-11	.093	3/8	-20	.187	3/8	-28	.250	3/4
-3	.047	3/8	-12	.093	1/2	-21	.187	1/2	-29	.312	1/8
-4	.047	1/2	-13	.125	1/8	-22	.187	3/4	-30	.312	1/4
-5	.062	1/8	-14	.125	3/16	-23	.210	1/2	-31	.312	3/8
-6	.062	1/4	-15	.125	1/4	-230	.245	1 1/4	-32	.312	1/2
-7	.062	3/8	-16	.125	3/8	-24	.250	1/8	-33	.312	5/8
-8	.062	1/2	-17	.125	1/2	-25	.250	1/4	-34	.312	3/4
-9	.093	1/8	-18	.187	1/8	-26	.250	3/8	-35	.437	1/4