

MACHINED HIGH TECHNOLOGY PLASTIC NUTS

*Available in the following materials:

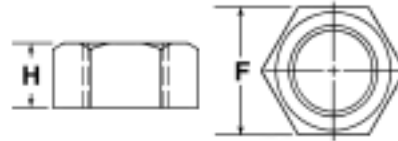
Material Code No.	Material Name	Material Code No.	Material Name	Material Code No.	Material Name	Material Code No.	Material Name
-2	Nylon, 30% Glass-filled (black), UV stabilized	-15	PEEK™	-46	Polycarbonate	-226	Radel® A200, Polyethersulfone
-5	Ultem® 1000	-18	Nylon 6/6, (natural)	-60	Nylon 6/6, 30% Short Glass-filled	-228	Radel® AG330, 30% Glass-filled
-11	Polypropylene	-24	Delrin®	-77	Ultem® 2300, (natural)	-229	Radel® R5000, Polyphenylsulfone
-13	Polyethylene	-32	PCTFE	-194	Nylon 46, 30% Glass-filled, Heat Stabilized		
-14	ABS	-37	PVDF	-195	Nylon 46, 30% Glass-filled, Flame Retardant, Heat Stabilized		
		-40	PFA, (Teflon®)				

*Available in other materials.
Other sizes available on request.

HEX NUTS Made to the American National Standard.

Part No. DF220 - (Size Code No.) - (Material Code No.)

Size Code No.	Thread Size	Size Code No.	Thread Size	Size Code No.	Thread Size
-1	0-80	-12	10-32	-23	1/2-20
-2	1-64	-13	12-24	-24	9/16-18
-3	1-72	-14	1/4-20	-25	5/8-11
-4	2-56	-15	1/4-28	-26	5/8-18
-5	3-48	-16	5/16-18	-27	3/4-10
-6	4-40	-17	5/16-24	-28	3/4-16
-7	5-40	-18	3/8-16	-29	7/8-9
-8	6-32	-19	3/8-24	-30	7/8-14
-9	6-40	-20	7/16-14	-31	1-8
-10	8-32	-21	7/16-20	-32	1-12
-11	10-24	-22	1/2-13	-33	1-14



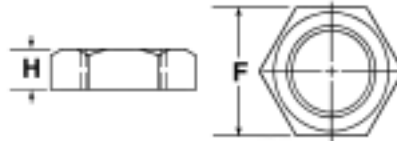
Thread Size	F		H		Thread Size	F		H	
	max.	min.	max.	min.		max.	min.	max.	min.
0	.156	.150	.050	.043	5/16	.500	.489	.273	.258
1	.156	.150	.050	.043	3/8	.562	.551	.337	.320
2	.188	.180	.066	.057	7/16	.688	.675	.385	.365
3	.188	.180	.066	.057	1/2	.750	.736	.448	.427
4	.250	.241	.098	.087	9/16	.875	.861	.496	.473
5	.312	.302	.114	.102	5/8	.938	.922	.559	.535
6	.312	.302	.114	.102	3/4	1.125	1.088	.665	.617
8	.344	.332	.130	.117	7/8	1.312	1.269	.776	.724
10	.375	.362	.130	.117	1	1.500	1.450	.887	.831
12	.438	.423	.161	.148					
1/4	.438	.428	.226	.212					

Tolerances: +/- .015

HEX JAM NUTS Made to the American National Standard.

Part No. DF222 - (Size Code No.) - (Material Code No.)

Size Code No.	Thread Size	Size Code No.	Thread Size	Size Code No.	Thread Size
-1	5/16-18	-9	1/2-24	-18	3/4-14NPT
-2	5/16-24	-10	1/2-28	-19	1/8-27NPS
-3	3/8-16	-11	3/4-10	-20	1/4-18NPS
-4	3/8-24	-12	3/4-27	-21	3/8-18NPS
-5	3/8-32	-14	1/8-27NPT	-22	1/2-14NPS
-6	7/16-14	-15	1/4-18NPT	-23	3/4-14NPS
-7	7/16-20	-16	3/8-18NPT		
-8	1/2-13	-17	1/2-14NPT		



Thread Size	F		H		Thread Size	F	H
	max.	min.	max.	min.			
5/16	.500	.489	.195	.180	1/8-27NPT/NPS	.735	.250
3/8	.562	.551	.227	.210	1/4-18NPT/NPS	.860	.375
7/16	.688	.675	.260	.240	3/8-18NPT/NPS	.985	.375
1/2	.750	.736	.323	.302	1/2-14NPT/NPS	1.235	.500
9/16	.875	.861	.324	.301	3/4-14NPT/NPS	1.485	.500
5/8	.938	.922	.387	.363			
3/4	1.125	1.088	.446	.398			

Tolerances: +/- .015

HEAVY HEX NUTS Made to the American National Standard.

Part Number - (Size Code No.) - (Material Code No.)

Size Code No.	Thread Size	Size Code No.	Thread Size	Size Code No.	Thread Size
-1	1/4-20	-15	3/4-16	-29	1 3/8-12
-2	1/4-28	-16	7/8-9	-30	1 1/2-6
-3	5/16-18	-17	7/8-14	-31	1 1/2-8
-4	5/16-24	-18	1-8	-32	1 1/2-12
-5	3/8-16	-19	1-12	-33	1 5/8-5.5
-6	3/8-24	-20	1-14	-34	1 3/4-5
-7	7/16-14	-21	1 1/8-7	-35	1 3/4-8
-8	7/16-20	-22	1 1/8-8	-36	1 7/8-5
-9	1/2-13	-23	1 1/8-12	-37	2-4
-10	1/2-20	-24	1 1/4-7	-38	2-8
-11	9/16-18	-25	1 1/4-8	-39	2 1/4-6
-12	5/8-11	-26	1 1/4-12	-40	2 1/4-8
-13	5/8-18	-27	1 3/8-6		
-14	3/4-10	-28	1 3/8-8		



Part No. DF205
HEAVY HEX NUT



Part No. DF210
HEAVY HEX JAM NUT



Thread Size	F		H		Heavy Hex Nut		Heavy Hex Jam Nut	
	max.	min.	max.	min.	max.	min.	max.	min.
1/4	.500	.488	.250	.218	.188	.156		
5/16	.562	.546	.314	.280	.220	.186		
3/8	.688	.669	.377	.341	.252	.216		
7/16	.750	.728	.441	.403	.285	.247		
1/2	.875	.850	.504	.464	.317	.277		
9/16	.938	.909	.568	.526	.349	.307		
5/8	1.062	1.031	.631	.587	.381	.337		
3/4	1.250	1.212	.758	.710	.446	.398		
7/8	1.438	1.394	.885	.833	.510	.458		
1	1.625	1.575	1.012	.956	.575	.519		
1 1/8	1.812	1.756	1.139	1.079	.639	.579		
1 1/4	2.000	1.938	1.251	1.187	.751	.687		
1 3/8	2.188	2.119	1.378	1.310	.815	.747		
1 1/2	2.375	2.300	1.505	1.433	.880	.808		
1 5/8	2.562	2.481	1.632	1.556	.944	.868		
1 3/4	2.750	2.662	1.759	1.679	1.009	.929		
1 7/8	2.938	2.844	1.886	1.802	1.073	.989		
2	3.125	3.025	2.013	1.925	1.138	1.050		
2 1/4	3.500	3.388	2.251	2.155	1.251	1.155		

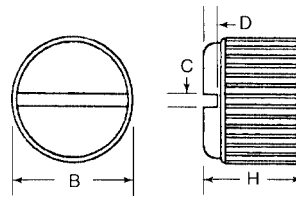
Tolerances: +/- .015

MACHINED HIGH TECHNOLOGY PLASTIC NUTS (continued)

SLOTTED THUMB NUTS

Part No. DF223 - (Size Code No.) - (Material Code No.)

Size Code No.	Thread Size	Size Code No.	Thread Size	Size Code No.	Thread Size
-1	4-40	-10	1/4-28	-16	1/2-20
-3	6-32	-11	5/16-18	-18	5/8-11
-5	8-32	-12	5/16-24	-19	5/8-18
-6	10-24	-13	3/8-16	-20	3/4-10
-7	10-32	-14	3/8-24		
-9	1/4-20	-15	1/2-13		



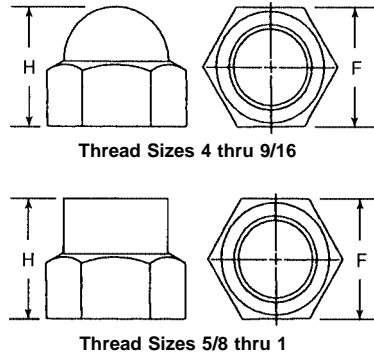
Thread Size	H	B	C	D
4	.280	.317	.039	.045
6	.334	.348	.044	.051
8	.378	.381	.049	.059
10	.357	.412	.056	.068
1/4	.370	.478	.070	.088
5/16	.437	.562	.070	.095
3/8	.480	.625	.080	.100
1/2	.625	.750	.090	.125
5/8	.825	1.000	.110	.140
3/4	.890	1.125	.125	.180

Tolerances: +/- .015

CAP NUTS

Part No. DF224 - (Size Code No.) - (Material Code No.)

Size Code No.	Thread Size	Size Code No.	Thread Size	Size Code No.	Thread Size
-1	4-40	-9	1/4-20	-16	1/2-20
-3	6-32	-10	1/4-28	-17	9/16-18
-4	6-40	-11	5/16-18	-18	5/8-11
-5	8-32	-12	5/16-24	-19	5/8-18
-6	10-24	-13	3/8-16	-20	3/4-10
-7	10-32	-14	3/8-24	-23	1-8
-8	12-24	-15	1/2-13	-24	1-12



Thread Size	F		H
	max.	min.	
4	.250	.242	.280
6	.312	.302	.340
8	.312	.302	.340
10	.375	.362	.410
12	.375	.362	.410
1/4	.437	.428	.470
5/16	.500	.489	.530
3/8	.562	.551	.620
1/2	.750	.736	.810
9/16	.875	.861	.940
5/8	.937	.922	1.000
3/4	1.062	1.045	1.160
1	1.437	1.417	1.550

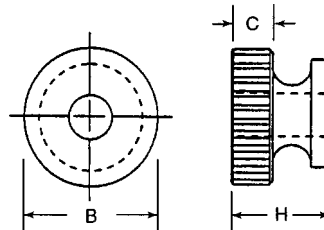
Tolerances: +/- .015

Cap Nuts are made to the American National Standard.

KNURLED THUMB NUTS

Part No. DF225 - (Size Code No.) - (Material Code No.)

Size Code No.	Thread Size	Size Code No.	Thread Size	Size Code No.	Thread Size
-1	4-40	-8	12-24	-15	1/2-13
-2	5-40	-9	1/4-20	-16	1/2-20
-3	6-32	-10	1/4-28	-18	5/8-11
-4	6-40	-11	5/16-18	-19	5/8-18
-5	8-32	-12	5/16-24		
-6	10-24	-13	3/8-16		
-7	10-32	-14	3/8-24		



Thread Size	B	H	C
4	.300	.280	.120
6	.360	.275	.125
8	.425	.305	.140
10	.425	.325	.140
1/4	.520	.365	.155
5/16	.612	.400	.170
3/8	.625	.500	.187
1/2	.750	.625	.250
5/8	1.000	.750	.300

Tolerances: +/- .015

MACHINED HIGH TECHNOLOGY PLASTIC METRIC NUTS

*Available in other materials. See materials list in index.
Other sizes available on request.

*Available in the following materials:

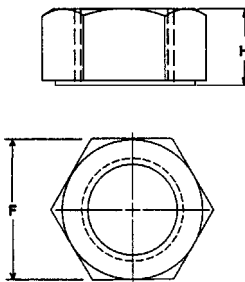
Material Code No.	Material Name	Material Code No.	Material Name	Material Code No.	Material Name	Material Code No.	Material Name
-3	Lexan®, (clear)	-27	PVC	-40	PFA, (Teflon®)	-195	Nylon 46, 30% Glass-filled, Flame Retardant, Heat Stabilized
-4	Lexan®, (black)	-28	CPVC	-41	Halar®	-213	Vespel®
-5	Ultem® 1000	-29	Teflon®	-60	Nylon 6/6, 30% Short Glass-filled	-226	Radel® A200, Polyethersulfone
-11	Polypropylene	-30	Tefzel®	-64	Delrin®, 25% Short Glass-filled	-228	Radel® AG330, 30% Glass-filled
-13	Polyethylene	-32	PCTFE	-77	Ultem® 2300, (natural)	-229	Radel® R5000, Polyphenylsulfone
-14	ABS	-33	Polysulfone	-78	Nylon 6/6, (black)	-272	PVC, (white)
-15	PEEK™	-35	Noryl®	-194	Nylon 46, 30% Glass-filled, Heat Stabilized	-273	PVC, (black)
-18	Nylon 6/6, (natural)	-37	PVDF				
-23	Nylon Super Tough	-38	Fiber Glass G10				
-24	Delrin®, (white)	-39	UHMW®				

ALL DIMENSIONS GIVEN IN MILLIMETERS

METRIC HEX NUTS

Part No. G114 - (Size Code No.) - (Material Code No.)

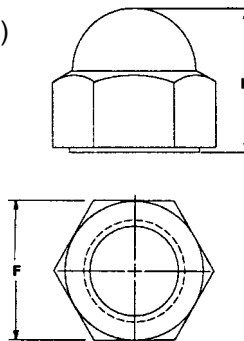
Size Code No.	Thread Size	F	H
-1	M2 x 0,4	4,00	1,60
-2	M2,5 x 0,45	5,00	2,00
-3	M3 x 0,5	5,50	2,40
-5	M4 x 0,7	7,00	3,20
-6	M5 x 0,8	8,00	4,00
-7	M6 x 1,0	10,00	5,00
-8	M8 x 1,25	13,00	6,50
-9	M10 x 1,5	17,00	8,00
-10	M12 x 1,75	19,00	10,00



METRIC CAP NUTS

Part No. G115 - (Size Code No.) - (Material Code No.)

Size Code No.	Thread Size	F	H
-2	M4 x 0,7	7,00	8,00
-3	M5 x 0,8	8,00	10,00
-4	M6 x 1,0	10,00	12,00
-5	M8 x 1,25	13,00	15,00
-6	M10 x 1,5	16/17,00	18,00
-7	M12 x 1,75	18/19,00	22,00



Parts are made to DIN dimensions. Materials are selected by customer.