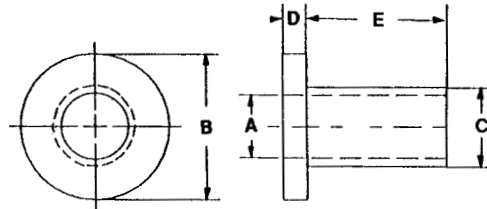


HIGH PERFORMANCE PLASTIC SCREW INSULATORS

*Available in the following materials:

Material Code No.	Material Name	Material Code No.	Material Name
-5	Ultem®1000	-39	UHMW
-11	Polypropylene	-60	Nylon 6/6, 30% Short Glass-filled
-13	Polyethylene	-77	Ultem® 2300, (natural)
-15	PEEK™	-78	Nylon 6/6, (black)
-18	Nylon 6/6, (natural)	-90	PEEK™, 30% Short Glass-filled
-24	Delrin®	-108	Polypropylene, 30% Glass-filled
-27	PVC, (gray)	-229	Radel® R5000, Polyphenylsulfone
-28	CPVC	-231	Radel® R5100 NT15, Polyphenylsulfone
-33	Polysulfone	-272	PVC, (white)
-35	Noryl®	-273	PVC, (black)
-38	Fiber Glass G10	-274	PVC, (clear)

*Available in other materials. See materials list in index.
Other sizes available on request.
Also, see MOLDED SCREW INSULATORS starting on page 140-141.



Part No. FN109 - (Size Code No.) - (Material Code No.)

Size Code No.	A Shank I.D.	B Flange O.D.	C Shank O.D.	D Flange Thk.	E Shank Thk.	Size Code No.	A Shank I.D.	B Flange O.D.	C Shank O.D.	D Flange Thk.	E Shank Thk.
-1	.090	.181	.120	.047	.125	-31	.200	.399	.260	.062	.140
-2	.090	.181	.120	.047	.187	-32	.200	.399	.260	.062	.187
-3	.090	.181	.120	.047	.250	-33	.200	.399	.260	.062	.250
-4	.090	.181	.120	.047	.375	-34	.200	.399	.260	.062	.375
-5	.115	.235	.145	.047	.031	-35	.200	.399	.260	.062	.500
-6	.115	.235	.145	.047	.047	-36	.200	.399	.260	.062	.562
-7	.115	.235	.145	.047	.062	-37	.200	.399	.260	.062	.625
-8	.115	.235	.145	.047	.094	-38	.200	.399	.260	.062	.750
-9	.115	.235	.145	.047	.125	-39	.260	.513	.312	.062	.125
-90	.115	.235	.145	.047	.150	-40	.260	.513	.312	.062	.140
-10	.115	.235	.145	.047	.156	-41	.260	.513	.312	.062	.187
-11	.115	.235	.145	.047	.187	-42	.260	.513	.312	.062	.250
-12	.115	.235	.145	.047	.250	-43	.260	.513	.312	.062	.375
-13	.115	.235	.145	.047	.375	-44	.260	.513	.312	.062	.500
-14	.115	.235	.145	.047	.500	-45	.260	.513	.312	.062	.625
-15	.140	.290	.170	.047	.047	-46	.260	.513	.312	.062	.750
-16	.140	.290	.170	.047	.062	-47	.320	.620	.360	.062	.125
-17	.140	.290	.170	.047	.094	-48	.320	.620	.360	.062	.250
-18	.140	.290	.170	.047	.125	-49	.320	.620	.360	.062	.375
-19	.140	.290	.170	.047	.156	-50	.320	.620	.360	.062	.500
-20	.140	.290	.170	.047	.187	-51	.320	.620	.360	.062	.625
-21	.140	.290	.170	.047	.250						
-22	.140	.290	.170	.047	.375						
-23	.140	.290	.170	.047	.500						
-24	.173	.344	.205	.062	.125						
-25	.173	.344	.205	.062	.140						
-26	.173	.344	.205	.062	.250						
-27	.173	.344	.205	.062	.375						
-28	.173	.344	.205	.062	.500						
-29	.173	.344	.205	.062	.625						
-30	.173	.344	.205	.062	.750						

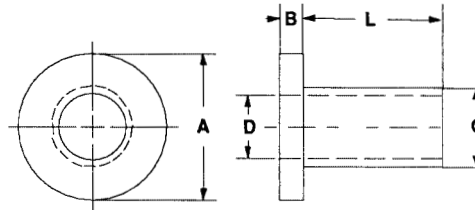
Tolerances: Flange O.D. +/- .005
Flange Thickness +/- .005
Shank O.D. - .005/+ .000
Shank Thickness +/- .005
Shank I.D. + .005/- .000

FLUOROPLASTIC SCREW INSULATORS

*Available in the following materials:

Material Code No.	Material Name	Material Code No.	Material Name
-29	Teflon®	-37	PVDF
-30	Tefzel®	-40	PFA (Teflon®)
-31	FEP®	-41	Halar®
-32	PCTFE		

*Available in other materials. See materials list in index.
Other sizes available on request.
Also, see MOLDED SCREW INSULATORS starting on page 140-141.



Part No. D203 - (Size Code No.) - (Material Code No.)

Size Code No.	Shank Thk. L	Flange O.D. A	Flange Thk. B	Shank O.D. C	Shank I.D. D	Size Code No.	Shank Thk. L	Flange O.D. A	Flange Thk. B	Shank O.D. C	Shank I.D. D
-1	.125	.181	.047	.120	.090	-27	.375	.344	.062	.205	.173
-2	.187	.181	.047	.120	.090	-28	.500	.344	.062	.205	.173
-3	.250	.181	.047	.120	.090	-29	.625	.344	.062	.205	.173
-4	.375	.181	.047	.120	.090	-30	.750	.344	.062	.205	.173
-5	.031	.235	.047	.145	.115	-31	.140	.399	.062	.260	.200
-6	.047	.235	.047	.145	.115	-32	.187	.399	.062	.260	.200
-7	.062	.235	.047	.145	.115	-33	.250	.399	.062	.260	.200
-8	.094	.235	.047	.145	.115	-34	.375	.399	.062	.260	.200
-9	.125	.235	.047	.145	.115	-35	.500	.399	.062	.260	.200
-10	.156	.235	.047	.145	.115	-36	.562	.399	.062	.260	.200
-11	.187	.235	.047	.145	.115	-37	.625	.399	.062	.260	.200
-12	.250	.235	.047	.145	.115	-38	.750	.399	.062	.260	.200
-13	.375	.235	.047	.145	.115	-39	.125	.513	.062	.312	.260
-14	.500	.235	.047	.145	.115	-40	.140	.513	.062	.312	.260
-15	.047	.290	.047	.170	.140	-41	.156	.513	.062	.312	.260
-16	.062	.290	.047	.170	.140	-42	.187	.513	.062	.312	.260
-17	.094	.290	.047	.170	.140	-43	.250	.513	.062	.312	.260
-18	.125	.290	.047	.170	.140	-44	.375	.513	.062	.312	.260
-19	.156	.290	.047	.170	.140	-45	.500	.513	.062	.312	.260
-20	.187	.290	.047	.170	.140	-46	.625	.513	.062	.312	.260
-21	.250	.290	.047	.170	.140	-47	.750	.513	.062	.312	.260
-22	.375	.290	.047	.170	.140	-48	.125	.620	.062	.360	.320
-23	.500	.290	.047	.170	.140	-49	.250	.620	.062	.360	.320
-24	.125	.344	.062	.205	.173	-50	.375	.620	.062	.360	.320
-25	.140	.344	.062	.205	.173	-51	.500	.620	.062	.360	.320
-26	.250	.344	.062	.205	.173	-52	.625	.620	.062	.360	.320

Tolerances: Flange O.D. +/- .005
Flange Thickness +/- .005
Shank O.D. - .005/+ .000
Shank Thickness +/- .005
I.D. + .005/- .000

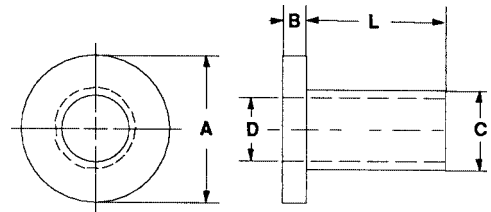
HIGH TECHNOLOGY PLASTIC METRIC SCREW INSULATORS

*Available in other materials. See materials list in index.
Other sizes available on request.
Also, see MOLDED SCREW INSULATORS starting on page 140-141.

*Available in the following materials:

Material Code No.	Material Name	Material Code No.	Material Name	Material Code No.	Material Name	Material Code No.	Material Name
-3	Lexan®, (clear)	-27	PVC	-40	PFA, (Teflon®)	-228	Radel® AG330, 30% Glass-filled
-4	Lexan®, (black)	-28	CPVC	-41	Halar®	-229	Radel® R5000, Polyphenylsulfone
-5	Ultem® 1000	-29	Teflon®	-60	Nylon 6/6, 30% Short Glass-filled	-272	PVC, (white)
-11	Polypropylene	-30	Tefzel®	-64	Delrin®, 25% Short Glass-filled	-273	PVC, (black)
-13	Polyethylene	-32	PCTFE	-77	Ultem® 2300, (natural)		
-14	ABS	-33	Polysulfone	-78	Nylon 6/6, (black)		
-15	PEEK™	-35	Noryl®	-213	Vespe®		
-18	Nylon 6/6, (natural)	-37	PVDF	-226	Radel® A200, Polyethersulfone		
-23	Nylon Super Tough	-38	Fiber Glass G10				
-24	Delrin®, (white)	-39	UHMW®				

ALL DIMENSIONS GIVEN IN MILLIMETERS



Part No. F108 - (Size Code No.) - (Material Code No.)

Size Code No.	Screw Size	Shank Thk. L	Flange O.D. A	Flange Thk. B	Shank O.D. C	Shank I.D. D	Size Code No.	Screw Size	Shank Thk. L	Flange O.D. A	Flange Thk. B	Shank O.D. C	Shank I.D. D
-1	M2 x 0,4	3	4,2	1,0	3,0	2,1	-18	M4 x 0,7	7	8,2	1,5	6,0	4,1
-2	M2 x 0,4	4	4,2	1,0	3,0	2,1	-19	M4 x 0,7	9	8,2	1,5	6,0	4,1
-3	M2 x 0,4	5	4,2	1,0	3,0	2,1	-20	M5 x 0,8	3	10,2	2,0	7,0	5,1
-4	M2 x 0,4	6	4,2	1,0	3,0	2,1	-21	M5 x 0,8	4	10,2	2,0	7,0	5,1
-5	M3 x 0,5	1	6,2	1,0	4,0	3,1	-22	M5 x 0,8	5	10,2	2,0	7,0	5,1
-6	M3 x 0,5	2	6,2	1,0	4,0	3,1	-23	M5 x 0,8	7	10,2	2,0	7,0	5,1
-7	M3 x 0,5	3	6,2	1,0	4,0	3,1	-24	M5 x 0,8	9	10,2	2,0	7,0	5,1
-8	M3 x 0,5	4	6,2	1,0	4,0	3,1	-25	M6 x 1,0	4	12,2	2,0	8,0	6,1
-9	M3 x 0,5	5	6,2	1,0	4,0	3,1	-26	M6 x 1,0	6	12,2	2,0	8,0	6,1
-10	M3 x 0,5	6	6,2	1,0	4,0	3,1	-27	M6 x 1,0	8	12,2	2,0	8,0	6,1
-11	M3 x 0,5	7	6,2	1,0	4,0	3,1	-28	M6 x 1,0	10	12,2	2,0	8,0	6,1
-12	M3 x 0,5	8	6,2	1,0	4,0	3,1	-29	M6 x 1,0	12	12,2	2,0	8,0	6,1
-13	M3 x 0,5	9	6,2	1,0	4,0	3,1	-30	M8 x 1,25	4	14,2	2,5	10,0	8,1
-14	M3 x 0,5	10	6,2	1,0	4,0	3,1	-31	M8 x 1,25	6	14,2	2,5	10,0	8,1
-15	M4 x 0,7	3	8,2	1,5	6,0	4,1	-32	M8 x 1,25	8	14,2	2,5	10,0	8,1
-16	M4 x 0,7	4	8,2	1,5	6,0	4,1	-33	M8 x 1,25	10	14,2	2,5	10,0	8,1
-17	M4 x 0,7	5	8,2	1,5	6,0	4,1	-34	M8 x 1,25	12	14,2	2,5	10,0	8,1

Tolerance on all dimensions: +/- .13mm

BUSHINGS

*Available in the following materials:

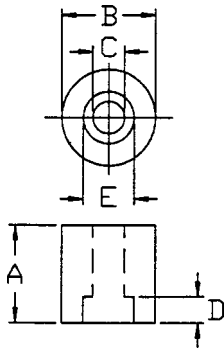
Material Code No.	Material Name	Material Code No.	Material Name
-11	Polypropylene	-40	PFA, (Teflon®)
-18	Nylon 6/6, (natural)	-46	Polycarbonate
-27	PVC	-60	Nylon 6/6, 30% Short Glass-filled
-28	CPVC	-62	Acetal
-29	Teflon®		
-37	PVDF		
-38	G-10 Fiber Glass		

*Available in other materials.
See materials list in index.

Call Craftech for quote on BUSHINGS (pages 228 and 229).
Tell us Part No. and Material Code No. followed with
dimensions to match line drawing (and drawing # if applicable).

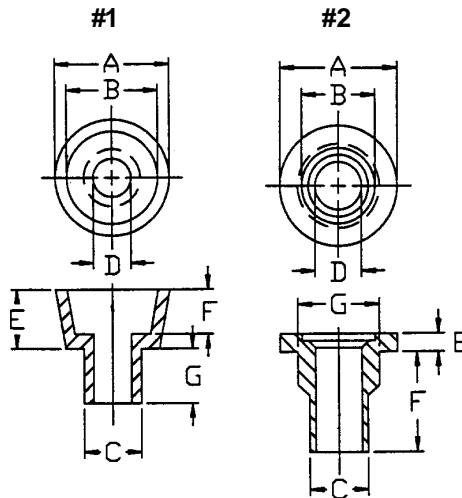
COUNTERBORE BUSHINGS

Part No. DN198



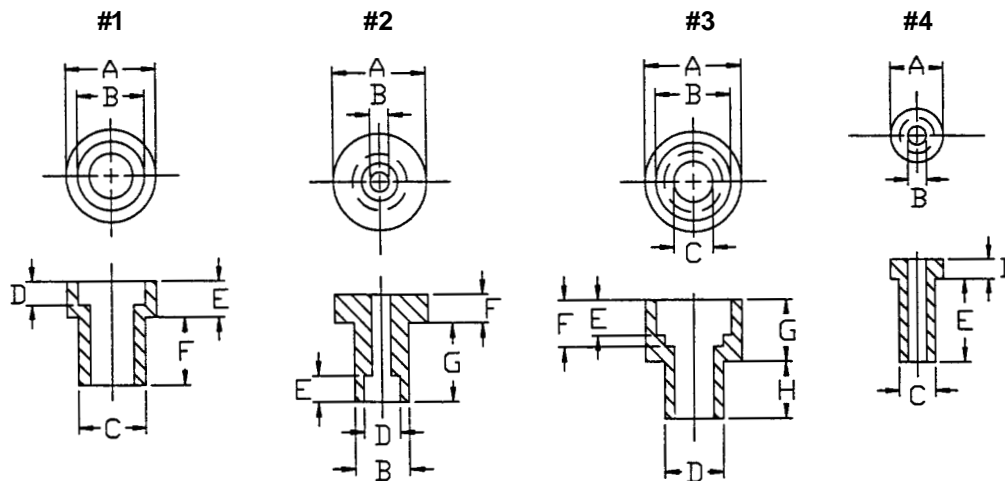
COUNTERSUNK BUSHINGS

Part No. D217



SPECIAL COUNTERBORE BUSHINGS

Part No. D216



*Available in the following materials:

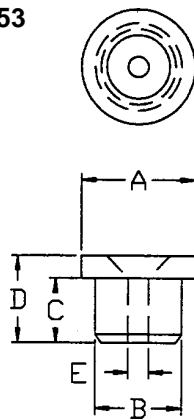
Material Code No.	Material Name	Material Code No.	Material Name
-11	Polypropylene	-40	PFA, (Teflon®)
-18	Nylon 6/6, (natural)	-46	Polycarbonate
-27	PVC	-60	Nylon 6/6, 30% Short Glass-filled
-28	CPVC	-62	Acetal
-29	Teflon®		
-37	PVDF		
-38	G-10 Fiber Glass		

*Available in other materials.
See materials list in index.

Call Craftech for quote on BUSHINGS (pages 228 and 229).
Tell us Part No. and Material Code No. followed with
dimensions to match line drawing (and drawing # if applicable).

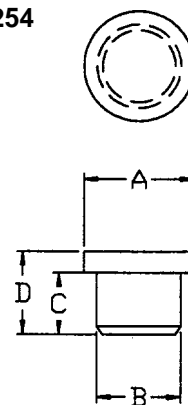
CIRCUIT BOARD BUSHINGS

Part No. DN253



CIRCUIT BOARD PLUG BUSHINGS

Part No. DNF254



COUNTERSUNK CIRCUIT BOARD BUSHINGS

Part No. DN254

