

MACHINED STANDOFFS

*Available in the following materials:

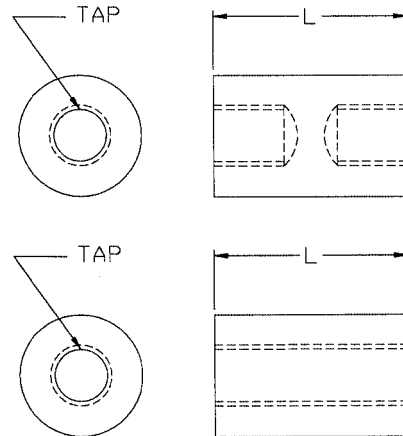
Material Code No.	Material Name	Material Code No.	Material Name	Material Code No.	Material Name
-11	Polypropylene	-32	PCTFE	-62	Acetal
-15	PEEK™	-37	PVDF	-60	Nylon 6/6, 30% Short Glass -filled
-27	PVC	-38	G-10 Fiber Glass		
-28	CPVC	-40	Teflon®, (PFA)		
-29	Teflon®	-46	Polycarbonate		
-31	FEP				

*Available in other materials.
See materials list in index.
Other sizes available on request.

ROUND STANDOFFS

(Part No.) - (Size Code No.) - (Material Code No.)
(below) (pages 231-232) (above)

<p>Part No. EN101 - (Size Code No.) - (Material Code No.) 3/16" Diameter <i>(3/16" diameter available from 1/8" to 2" length only.)</i></p>
<p>Part No. EN102 - (Size Code No.) - (Material Code No.) 1/4" Diameter</p>
<p>Part No. EN103 - (Size Code No.) - (Material Code No.) 5/16" Diameter</p>
<p>Part No. EN104 - (Size Code No.) - (Material Code No.) 3/8" Diameter</p>
<p>Part No. EN105 - (Size Code No.) - (Material Code No.) 1/2" Diameter</p>
<p>Part No. EN106 - (Size Code No.) - (Material Code No.) 5/8" Diameter</p>
<p>Part No. EN107 - (Size Code No.) - (Material Code No.) 3/4" Diameter</p>



Standoffs are drilled straight through up to 3/4" lengths.

ROUND STANDOFFS and HEX STANDOFFS SIZE CODE CHART

Size Code No.	Length	Thread Size	Size Code No.	Length	Thread Size	Size Code No.	Length	Thread Size
-1	1/8	4-40	-51	8	4-40	-101	5 3/4	6-32
-2	3/16	4-40	-52	8 1/4	4-40	-102	6	6-32
-3	1/4	4-40	-53	8 1/2	4-40	-103	6 1/4	6-32
-4	5/16	4-40	-54	8 3/4	4-40	-104	6 1/2	6-32
-5	3/8	4-40	-55	9	4-40	-105	6 3/4	6-32
-6	7/16	4-40	-56	9 1/4	4-40	-106	7	6-32
-7	1/2	4-40	-57	9 1/2	4-40	-107	7 1/4	6-32
-8	9/16	4-40	-58	9 3/4	4-40	-108	7 1/2	6-32
-9	5/8	4-40	-59	10	4-40	-109	7 3/4	6-32
-10	3/4	4-40	-60	1 1/8	6-32	-110	8	6-32
-11	7/8	4-40	-61	3/16	6-32	-111	8 1/4	6-32
-12	1	4-40	-62	1/4	6-32	-112	8 1/2	6-32
-13	1 1/16	4-40	-63	5/16	6-32	-113	8 3/4	6-32
-14	1 1/8	4-40	-64	3/8	6-32	-114	9	6-32
-15	1 3/16	4-40	-65	7/16	6-32	-115	9 1/4	6-32
-16	1 1/4	4-40	-66	1/2	6-32	-116	9 1/2	6-32
-17	1 5/16	4-40	-67	9/16	6-32	-117	9 3/4	6-32
-18	1 3/8	4-40	-68	5/8	6-32	-118	10	6-32
-19	1 7/16	4-40	-69	3/4	6-32	-119	1 1/8	8-32
-20	1 1/2	4-40	-70	7/8	6-32	-120	3/16	8-32
-21	1 9/16	4-40	-71	1	6-32	-121	1/4	8-32
-22	1 5/8	4-40	-72	1 1/16	6-32	-122	5/16	8-32
-23	1 3/4	4-40	-73	1 1/8	6-32	-123	3/8	8-32
-24	1 7/8	4-40	-74	1 3/16	6-32	-124	7/16	8-32
-25	2	4-40	-75	1 1/4	6-32	-125	1/2	8-32
-26	2 1/8	4-40	-76	1 5/16	6-32	-126	9/16	8-32
-27	2 1/4	4-40	-77	1 3/8	6-32	-127	5/8	8-32
-28	2 3/8	4-40	-78	1 7/16	6-32	-128	3/4	8-32
-29	2 1/2	4-40	-79	1 1/2	6-32	-129	7/8	8-32
-30	2 3/4	4-40	-80	1 9/16	6-32	-130	1	8-32
-31	3	4-40	-81	1 5/8	6-32	-131	1 1/16	8-32
-32	3 1/4	4-40	-82	1 3/4	6-32	-132	1 1/8	8-32
-33	3 1/2	4-40	-83	1 7/8	6-32	-133	1 3/16	8-32
-34	3 3/4	4-40	-84	2	6-32	-134	1 1/4	8-32
-35	4	4-40	-85	2 1/8	6-32	-135	1 5/16	8-32
-36	4 1/4	4-40	-86	2 1/4	6-32	-136	1 3/8	8-32
-37	4 1/2	4-40	-87	2 3/8	6-32	-137	1 7/16	8-32
-38	4 3/4	4-40	-88	2 1/2	6-32	-138	1 1/2	8-32
-39	5	4-40	-89	2 3/4	6-32	-139	1 9/16	8-32
-40	5 1/4	4-40	-90	3	6-32	-140	1 5/8	8-32
-41	5 1/2	4-40	-91	3 1/4	6-32	-141	1 3/4	8-32
-42	5 3/4	4-40	-92	3 1/2	6-32	-142	1 7/8	8-32
-43	6	4-40	-93	3 3/4	6-32	-143	2	8-32
-44	6 1/4	4-40	-94	4	6-32	-144	2 1/8	8-32
-45	6 1/2	4-40	-95	4 1/4	6-32	-145	2 1/4	8-32
-46	6 3/4	4-40	-96	4 1/2	6-32	-146	2 3/8	8-32
-47	7	4-40	-97	4 3/4	6-32	-147	2 1/2	8-32
-48	7 1/4	4-40	-98	5	6-32	-148	2 3/4	8-32
-49	7 1/2	4-40	-99	5 1/4	6-32			
-50	7 3/4	4-40	-100	5 1/2	6-32			

(continued next page)

1/4-20 available for Part Nos. EN105, EN106, EN107, EN112, EN113 and EN114.

MACHINED STANDOFFS (continued)

ROUND STANDOFFS and HEX STANDOFFS SIZE CODE CHART

Size Code No.	Length	Thread Size	Size Code No.	Length	Thread Size	Size Code No.	Length	Thread Size
-149	3	8-32	-199	1 5/8	10-32	-249	1 1/16	1/4-20
-150	3 1/4	8-32	-200	1 3/4	10-32	-250	1 1/8	1/4-20
-151	3 1/2	8-32	-201	1 7/8	10-32	-251	1 3/16	1/4-20
-152	3 3/4	8-32	-202	2	10-32	-252	1 1/4	1/4-20
-153	4	8-32	-203	2 1/8	10-32	-253	1 5/16	1/4-20
-154	4 1/4	8-32	-204	2 1/4	10-32	-254	1 3/8	1/4-20
-155	4 1/2	8-32	-205	2 3/8	10-32	-255	1 7/16	1/4-20
-156	4 3/4	8-32	-206	2 1/2	10-32	-256	1 1/2	1/4-20
-157	5	8-32	-207	2 3/4	10-32	-257	1 9/16	1/4-20
-158	5 1/4	8-32	-208	3	10-32	-258	1 5/8	1/4-20
-159	5 1/2	8-32	-209	3 1/4	10-32	-259	1 3/4	1/4-20
-160	5 3/4	8-32	-210	3 1/2	10-32	-260	1 7/8	1/4-20
-161	6	8-32	-211	3 3/4	10-32	-261	2	1/4-20
-162	6 1/4	8-32	-212	4	10-32	-262	2 1/8	1/4-20
-163	6 1/2	8-32	-213	4 1/4	10-32	-263	2 1/4	1/4-20
-164	6 3/4	8-32	-214	4 1/2	10-32	-264	2 3/8	1/4-20
-165	7	8-32	-215	4 3/4	10-32	-265	2 1/2	1/4-20
-166	7 1/4	8-32	-216	5	10-32	-266	2 3/4	1/4-20
-167	7 1/2	8-32	-217	5 1/4	10-32	-267	3	1/4-20
-168	7 3/4	8-32	-218	5 1/2	10-32	-268	3 1/4	1/4-20
-169	8	8-32	-219	5 3/4	10-32	-269	3 1/2	1/4-20
-170	8 1/4	8-32	-220	6	10-32	-270	3 3/4	1/4-20
-171	8 1/2	8-32	-221	6 1/4	10-32	-271	4	1/4-20
-172	8 3/4	8-32	-222	6 1/2	10-32	-272	4 1/4	1/4-20
-173	9	8-32	-223	6 3/4	10-32	-273	4 1/2	1/4-20
-174	9 1/4	8-32	-224	7	10-32	-274	4 3/4	1/4-20
-175	9 1/2	8-32	-225	7 1/4	10-32	-275	5	1/4-20
-176	9 3/4	8-32	-226	7 1/2	10-32	-276	5 1/4	1/4-20
-177	10	8-32	-227	7 3/4	10-32	-277	5 1/2	1/4-20
-178	1/8	10-32	-228	8	10-32	-278	5 3/4	1/4-20
-179	3/16	10-32	-229	8 1/4	10-32	-279	6	1/4-20
-180	1/4	10-32	-230	8 1/2	10-32	-280	6 1/4	1/4-20
-181	5/16	10-32	-231	8 3/4	10-32	-281	6 1/2	1/4-20
-182	3/8	10-32	-232	9	10-32	-282	6 3/4	1/4-20
-183	7/16	10-32	-233	9 1/4	10-32	-283	7	1/4-20
-184	1/2	10-32	-234	9 1/2	10-32	-284	7 1/4	1/4-20
-185	9/16	10-32	-235	9 3/4	10-32	-285	7 1/2	1/4-20
-186	5/8	10-32	-236	10	10-32	-286	7 3/4	1/4-20
-187	3/4	10-32	-237	1/8	1/4-20	-287	8	1/4-20
-188	7/8	10-32	-238	3/16	1/4-20	-288	8 1/4	1/4-20
-189	1	10-32	-239	1/4	1/4-20	-289	8 1/2	1/4-20
-190	1 1/16	10-32	-240	5/16	1/4-20	-290	8 3/4	1/4-20
-191	1 1/8	10-32	-241	3/8	1/4-20	-291	9	1/4-20
-192	1 3/16	10-32	-242	7/16	1/4-20	-292	9 1/4	1/4-20
-193	1 1/4	10-32	-243	1/2	1/4-20	-293	9 1/2	1/4-20
-194	1 5/16	10-32	-244	9/16	1/4-20	-294	9 3/4	1/4-20
-195	1 3/8	10-32	-245	5/8	1/4-20	-295	10	1/4-20
-196	1 7/16	10-32	-246	3/4	1/4-20			
-197	1 1/2	10-32	-247	7/8	1/4-20			
-198	1 9/16	10-32	-248	1	1/4-20			

1/4-20 available for Part Nos. EN105, EN106, EN107, EN112, EN113 and EN114.

*Available in the following materials:

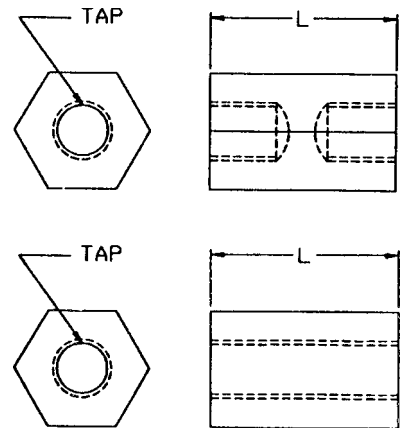
Material Code No.	Material Name	Material Code No.	Material Name	Material Code No.	Material Name
-11	Polypropylene	-32	PCTFE	-62	Acetal
-15	PEEK™	-37	PVDF	-60	Nylon 6/6, 30% Short Glass -filled
-27	PVC	-38	G-10 Fiber Glass		
-28	CPVC	-40	Teflon®, (PFA)		
-29	Teflon®	-46	Polycarbonate		
-31	FEP				

*Available in other materials.
See materials list in index.
Other sizes available on request.

HEX STANDOFFS

(Part No.) - (Size Code No.) - (Material Code No.)
(below) (pages 231-232) (above)

<p>Part No. EN108 - (Size Code No.) - (Material Code No.) 3/16" AF</p>
<p>Part No. EN109 - (Size Code No.) - (Material Code No.) 1/4" AF</p>
<p>Part No. EN110 - (Size Code No.) - (Material Code No.) 5/16" AF</p>
<p>Part No. EN111 - (Size Code No.) - (Material Code No.) 3/8" AF</p>
<p>Part No. EN112 - (Size Code No.) - (Material Code No.) 1/2" AF</p>
<p>Part No. EN113 - (Size Code No.) - (Material Code No.) 5/8" AF</p>
<p>Part No. EN114 - (Size Code No.) - (Material Code No.) 3/4" AF</p>



Standoffs are drilled straight through up to 3/4" lengths.

STANDOFFS (continued)

*Available in the following materials:

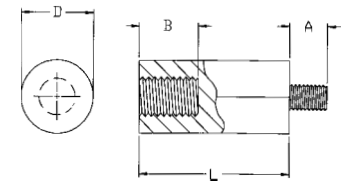
Material Code No.	Material Name	Material Code No.	Material Name	Material Code No.	Material Name
-11	Polypropylene	-32	PCTFE	-62	Acetal
-15	PEEK™	-37	PVDF	-60	Nylon 6/6, 30% Short Glass -filled
-27	PVC	-38	G-10 Fiber Glass		
-28	CPVC	-40	Teflon®, (PFA)		
-29	Teflon®	-46	Polycarbonate		
-31	FEP				

*Available in other materials. See materials list in index. Other sizes available on request.

ROUND MALE-FEMALE STANDOFFS

3/16" Dia. - Part No. EN170 - (Size Code No.) - (Material Code No.)

Size Code No.	Length	Thd.	Size Code No.	Length	Thd.	Size Code No.	Length	Thd.	Size Code No.	Length	Thd.
-1	3/16 *	2-56	-8	11/16	2-56	-16	1/4 **	4-40	-23	11/16	4-40
-2	1/4	2-56	-9	3/4	2-56	-17	5/16	4-40	-24	3/4	4-40
-3	5/16	2-56	-11	13/16	2-56	-18	3/8	4-40	-25	13/16	4-40
-4	3/8	2-56	-12	7/8	2-56	-19	7/16	4-40	-26	7/8	4-40
-40	7/16	2-56	-13	15/16	2-56	-20	1/2	4-40	-27	15/16	4-40
-5	1/2	2-56	-14	1	2-56	-21	9/16	4-40	-28	1	4-40
-6	9/16	2-56	-15	3/16 *	4-40	-22	5/8	4-40			
-7	5/8	2-56									



Thread	A	B
2-56	5/32	3/16
4-40	3/16	1/4

* 3/16" lengths tapped 1/8".
** 1/4" lengths tapped 3/16".

1/4" Dia. - Part No. EN171 - (Size Code No.) - (Material Code No.)

Size Code No.	Length	Thd.	Size Code No.	Length	Thd.	Size Code No.	Length	Thd.	Size Code No.	Length	Thd.
-1	1/4 **	4-40	-13	1 3/4	4-40	-25	1 3/8	6-32	-37	1	8-32
-2	3/8	4-40	-14	1 7/8	4-40	-26	1 1/2	6-32	-38	1 1/8	8-32
-3	1/2	4-40	-15	2	4-40	-27	1 5/8	6-32	-39	1 1/4	8-32
-4	5/8	4-40	-16	1/4 **	6-32	-28	1 3/4	6-32	-40	1 3/8	8-32
-5	3/4	4-40	-17	3/8 ***	6-32	-29	1 7/8	6-32	-41	1 1/2	8-32
-6	7/8	4-40	-18	1/2	6-32	-30	2	6-32	-42	1 5/8	8-32
-7	1	4-40	-19	5/8	6-32	-31	1/4 **	8-32	-43	1 3/4	8-32
-8	1 1/8	4-40	-20	3/4	6-32	-32	3/8 ***	8-32	-44	1 7/8	8-32
-9	1 1/4	4-40	-21	7/8	6-32	-33	1/2	8-32	-45	2	8-32
-10	1 3/8	4-40	-22	1	6-32	-34	5/8	8-32			
-11	1 1/2	4-40	-23	1 1/8	6-32	-35	3/4	8-32			
-12	1 5/8	4-40	-24	1 1/4	6-32	-36	7/8	8-32			

Thread	A	B
4-40	3/16	1/4
6-32	1/4	3/8
8-32	3/8	7/16

* 1/4" lengths tapped 3/16".
** 3/8" lengths tapped 1/4".
*** 1/2" lengths tapped 3/8".

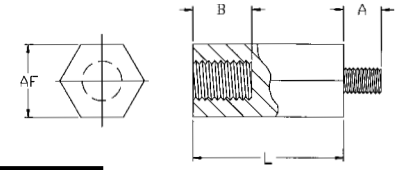
STANDOFFS (continued)

*Available in the following materials:

Material Code No.	Material Name	Material Code No.	Material Name	Material Code No.	Material Name
-11	Polypropylene	-32	PCTFE	-62	Acetal
-15	PEEK™	-37	PVDF	-60	Nylon 6/6, 30% Short Glass -filled
-27	PVC	-38	G-10 Fiber Glass		
-28	CPVC	-40	Teflon®, (PFA)		
-29	Teflon®	-46	Polycarbonate		
-31	FEP				

*Available in other materials. See materials list in index. Other sizes available on request.

HEX MALE-FEMALE STANDOFFS



1/4" AF - Part No. EN174 - (Size Code No.) - (Material Code No.)

Size Code No.	Length	Thd.	Size Code No.	Length	Thd.	Size Code No.	Length	Thd.	Size Code No.	Length	Thd.
-1	1/4 *	4-40	-13	1 3/4	4-40	-24	1 1/4	6-32	-35	3/4	8-32
-2	3/8	4-40	-14	1 7/8	4-40	-240	1 5/16	6-32	-36	7/8	8-32
-3	1/2	4-40	-15	2	4-40	-25	1 3/8	6-32	-37	1	8-32
-4	5/8	4-40	-16	1/4 *	6-32	-26	1 1/2	6-32	-38	1 1/8	8-32
-5	3/4	4-40	-17	3/8 **	6-32	-27	1 5/8	6-32	-39	1 1/4	8-32
-6	7/8	4-40	-18	1/2	6-32	-28	1 3/4	6-32	-40	1 3/8	8-32
-7	1	4-40	-180	9/16	6-32	-29	1 7/8	6-32	-41	1 1/2	8-32
-8	1 1/8	4-40	-19	5/8	6-32	-30	2	6-32	-42	1 5/8	8-32
-9	1 1/4	4-40	-20	3/4	6-32	-31	1/4 *	8-32	-43	1 3/4	8-32
-10	1 3/8	4-40	-21	7/8	6-32	-32	3/8 **	8-32	-44	1 7/8	8-32
-11	1 1/2	4-40	-22	1	6-32	-33	1/2 ***	8-32	-45	2	8-32
-12	1 5/8	4-40	-23	1 1/8	6-32	-34	5/8	8-32			

Thread	A	B
4-40	3/16	1/4
6-32	1/4	3/8
8-32	3/8	7/16

* 1/4" lengths tapped 3/16".
 ** 3/8" lengths tapped 1/4".
 *** 1/2" lengths tapped 3/8".

3/8" AF - Part No. EN173 - (Size Code No.) - (Material Code No.)

Size Code No.	Lgth	Thread	Size Code No.	Lgth	Thread	Size Code No.	Lgth	Thread	Size Code No.	Lgth	Thread
-1	1/4 *	4-40	-29	1/4 *	6-32	-57	1/4 *	8-32	-85	1/4 *	10-32
-2	3/8	4-40	-30	3/8 **	6-32	-58	3/8 **	8-32	-86	3/8 **	10-32
-3	1/2	4-40	-31	1/2	6-32	-59	1/2	8-32	-87	1/2 ***	10-32
-4	5/8	4-40	-32	5/8	6-32	-60	5/8	8-32	-88	5/8	10-32
-5	3/4	4-40	-33	3/4	6-32	-61	3/4	8-32	-89	3/4	10-32
-6	7/8	4-40	-34	7/8	6-32	-62	7/8	8-32	-90	7/8	10-32
-7	1	4-40	-35	1	6-32	-63	1	8-32	-91	1	10-32
-8	1 1/8	4-40	-36	1 1/8	6-32	-64	1 1/8	8-32	-92	1 1/8	10-32
-9	1 1/4	4-40	-37	1 1/4	6-32	-65	1 1/4	8-32	-93	1 1/4	10-32
-10	1 3/8	4-40	-38	1 3/8	6-32	-66	1 3/8	8-32	-94	1 3/8	10-32
-11	1 1/2	4-40	-39	1 1/2	6-32	-67	1 1/2	8-32	-95	1 1/2	10-32
-12	1 5/8	4-40	-40	1 5/8	6-32	-68	1 5/8	8-32	-96	1 5/8	10-32
-13	1 3/4	4-40	-41	1 3/4	6-32	-69	1 3/4	8-32	-97	1 3/4	10-32
-14	1 7/8	4-40	-42	1 7/8	6-32	-70	1 7/8	8-32	-98	1 7/8	10-32
-15	2	4-40	-43	2	6-32	-71	2	8-32	-99	2	10-32
-16	2 1/4	4-40	-44	2 1/4	6-32	-72	2 1/4	8-32	-100	2 1/4	10-32
-17	2 1/2	4-40	-45	2 1/2	6-32	-73	2 1/2	8-32	-101	2 1/2	10-32
-18	2 3/4	4-40	-46	2 3/4	6-32	-74	2 3/4	8-32	-102	2 3/4	10-32
-19	3	4-40	-47	3	6-32	-75	3	8-32	-103	3	10-32
-20	3 1/4	4-40	-48	3 1/4	6-32	-76	3 1/4	8-32	-104	3 1/4	10-32
-21	3 1/2	4-40	-49	3 1/2	6-32	-77	3 1/2	8-32	-105	3 1/2	10-32
-22	3 3/4	4-40	-50	3 3/4	6-32	-78	3 3/4	8-32	-106	3 3/4	10-32
-23	4	4-40	-51	4	6-32	-79	4	8-32	-107	4	10-32
-24	4 1/4	4-40	-52	4 1/4	6-32	-80	4 1/4	8-32	-108	4 1/4	10-32
-25	4 1/2	4-40	-53	4 1/2	6-32	-81	4 1/2	8-32	-109	4 1/2	10-32
-26	4 3/4	4-40	-54	4 3/4	6-32	-82	4 3/4	8-32	-110	4 3/4	10-32
-27	5	4-40	-55	5	6-32	-83	5	8-32	-111	5	10-32
-28	6	4-40	-56	6	6-32	-84	6	8-32	-112	6	10-32

Thread	A	B
4-40	3/16	1/4
6-32	1/4	3/8
8-32	3/8	7/16
10-32	3/8	1/2

* 1/4" lengths tapped 3/16".
 ** 3/8" lengths tapped 1/4".
 *** 1/2" lengths tapped 3/8".