

PANEL FASTENERS and HOLE PLUGS (continued)

Grommet nuts shown on pages 255-258 provide a positive connection for thin gauge materials while they eliminate the chance of cross-threading. The poly grommet snaps into a pre-punched square hole. The metal screw is encapsulated by the grommet, insulating it from electrical wiring and tubing while it guards against thermal and moisture transfer.

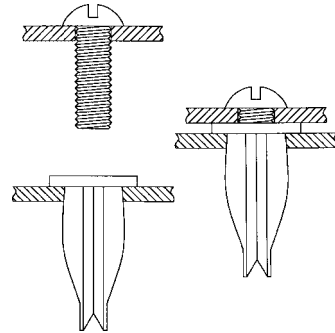
CLOSED SCREW STANDARD GROMMETS

Available in the following materials:

Material Code No.	Material Name
-18	Nylon 6/6, (natural)
-78	Nylon 6/6, (black)

Part No. P150 - (Size Code No.) - (Material Code No.)

Size Code No.	Hole Size	Panel Thkness Range	Screw Size	Head Size B	Head Hgt. A	Lock Lgth. C
-1	.270/.290	.020/.140	8-10	.375	.031	.540
-2	.270/.290	.020/.140	8-10	.375	.062	.540
-3	.270/.290	.020/.140	8-10	.375	.125	.540
-4	.270/.290	.020/.140	8-10	.375	.250	.540
-5	.309/.315	.020/.140	8-10	.437	.031	.540
-6	.309/.315	.020/.140	8-10	.437	.062	.540
-7	.309/.315	.020/.140	8-10	.437	.125	.540
-8	.309/.315	.020/.140	8-10	.437	.250	.540
-9	.250/.281	.020/.140	8-10	.375	.125	.438



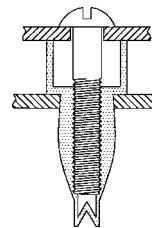
CLOSED SCREW SPACER GROMMETS

Available in the following materials:

Material Code No.	Material Name
-18	Nylon 6/6, (natural)
-78	Nylon 6/6, (black)

Part No. P151 - (Size Code No.) - (Material Code No.)

Size Code No.	Spacer Length	Spacer O.D.	Hole Size	Panel Thkness Range	Screw Size	Lock Lgth. C
-1	.125	.375	.270/.290	.020/.140	8-10	.548
-2	.187	.375	.270/.290	.020/.140	8-10	.548
-3	.250	.375	.270/.290	.020/.140	8-10	.548
-4	.312	.375	.270/.290	.020/.140	8-10	.548
-5	.375	.375	.270/.290	.020/.140	8-10	.548
-6	.500	.375	.270/.290	.020/.140	8-10	.548



The specially designed body of these arrow clips compresses as its forced through a prepunched hole and springs back to its original shape to lock the assemble parts securely. Clips provide electrical insulating, vibration, abrasion and corrosion resistant connection. Clips can be disassembled and reused again.

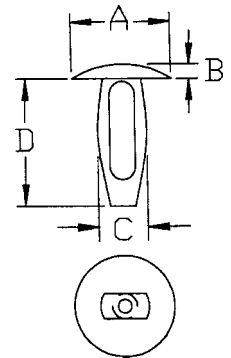
ARROW CLIPS

Available in the following materials:

Material Code No.	Material Name
-18	Nylon 6/6, (natural)
-78	Nylon 6/6, (black)

Part No. P108 - (Size Code No.) - (Material Code No.)

Size Code No.	Hole Size	Panel Thkness	Head Dia. A	Head Hgt. B	Clip C	Length D
-1	.182/.192	.062/.125	.360	.060	.225	.400
-2	.131/.135	.062/.125	.270	.060	.160	.395
-3	.151/.161	.062/.125	.280	.040	.196	.390
-4	.151/.161	.062/.145	.280	.080	.180	.400
-5	.213/.223	.125/.187	.370	.060	.248	.540
-6	.182/.192	.310/.330	.370	.060	.225	.540
-7	.213/.223	.062/.125	.370	.060	.225	.450
-8	.250/.260	.125/.187	.484	.060	.290	.575
-9	.062/.065	.010/.031	.100	.020	.068	.125
-10	.182/.192	.165/.185	.375	.060	.206	.525
-11	.195/.200	.035/.065	.370	.060	.225	.350
-12	.130/.132	.125/.140	.270	.070	.162	.310
-13	.145/.150	.290/.300	.270	.070	.196	.530
-14	.118/.122	.062/.125	.280	.060	.150	.390
-15	.250/.260	.360/.380	.615	.065	.286	.810
-16	.320/.335	.062/.340	.683	.070	.375	.900
-17	.160/.165	.032/.125	.280	.080	.186	.400
-18	.330/.340	.125/.350	.685	.070	.375	.895
-19	.120/.135	.062/.125	.270	.040	.140	.330
-20	.250/.260	.125/.250	.500	.050	.280	.630
-21	.085/.090	.032/.107	.125	.030	.107	.187
-22	.335/.345	.062/.140	.866	.050	.363	.458
-23	.250/.260	.500/.750	.610	.068	.287	1.135
-24	.240/.260	.095/.218	.750	.055	.281	.632
-25	.062/.065	.010/.031	.100	.020	.068	.187
-26	.192/.212	.062/.125	.375	.060	.235	.450
-27	.330/.340	.125/.350	.475	.070	.370	.895
-28	.160/.165	.032/.125	.300	.110	.186	.400



PANEL FASTENERS and HOLE PLUGS (continued)

The key-hole shaped interior allows this part to collapse more completely for easy assembly with finger pressure.

Angled panel lock section takes up slack in panels to provide for a tight assembly.

KEY-HOLE CLIPS

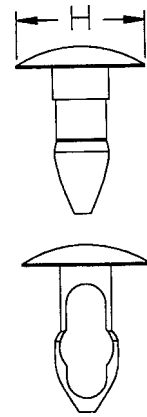
Available in the following materials:

Material Code No. Material Name

- 18 Nylon 6/6, (natural)
- 78 Nylon 6/6, (black)

Part No. P147 - (Size Code No.) - (Material Code No.)

Size Code No.	H Head Dia.	Hole Size	Panel Thkness	Size Code No.	H Head Dia.	Hole Size	Panel Thkness	Size Code No.	H Head Dia.	Hole Size	Panel Thkness
-1	.250	.125	.093	-9	.312	.187	.125	-20	.343	.219	.281
-2	.250	.125	.125	-10	.312	.187	.156	-21	.343	.219	.312
-3	.250	.125	.156	-11	.312	.187	.187	-210	.343	.219	.375
-300	.250	.125	.188	-12	.312	.187	.219	-22	.500	.250	.093
-303	.250	.125	.219	-13	.312	.187	.250	-23	.500	.250	.125
-305	.250	.125	.250	-130	.468	.187	.250	-24	.500	.250	.156
-4	.312	.156	.093	-131	.312	.187	.281	-25	.500	.250	.187
-5	.312	.156	.125	-132	.312	.187	.131	-26	.500	.250	.219
-6	.312	.156	.156	-133	.312	.187	.344	-27	.500	.250	.250
-7	.312	.156	.187	-134	.312	.187	.375	-28	.500	.250	.281
-701	.312	.156	.218	-140	.343	.219	.043	-29	.500	.250	.312
-702	.312	.156	.250	-14	.343	.219	.093	-30	.500	.250	.343
-703	.312	.156	.281	-15	.343	.219	.125	-31	.500	.250	.375
-704	.312	.156	.312	-16	.343	.219	.156	-32	.500	.250	.406
-705	.312	.156	.343	-17	.343	.219	.187	-33	.500	.250	.437
-706	.312	.156	.375	-18	.343	.219	.219	-34	.500	.250	.468
-8	.312	.187	.093	-19	.343	.219	.250	-35	.500	.250	.500



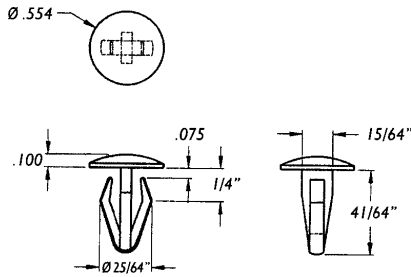
"SPECIAL ITEM" ARROW CLIPS

*Available in the following materials:

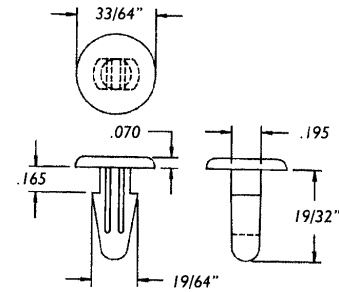
Material Code No.	Material Name
-18	Nylon 6/6, (natural)
-78	Nylon 6/6, (black)

These "special item" arrow clips are designed to provide unique fasteners for assembly applications where larger panel thicknesses and/or mounting diameters combined with increased fastening strength is required.

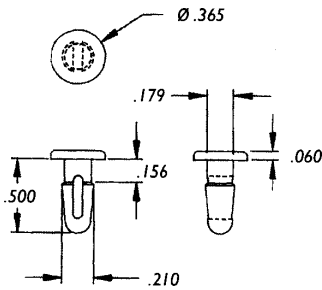
Part No. P504 - 1 - (Material Code No.)



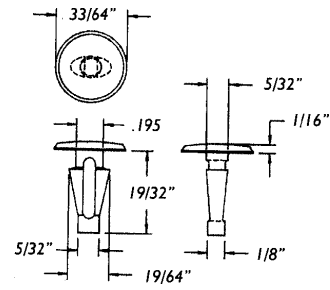
Part No. P517 - 2 - (Material Code No.)



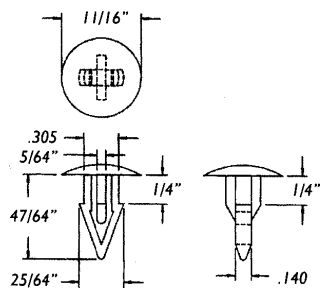
Part No. P505 - 3 - (Material Code No.)



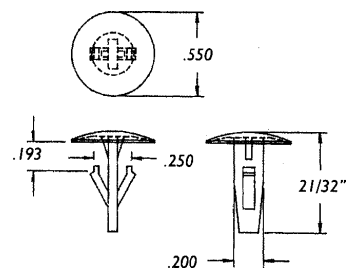
Part No. P518 - 4 - (Material Code No.)



Part No. P506 - 5 - (Material Code No.)



Part No. P519 - 6 - (Material Code No.)



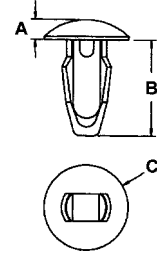
PANEL FASTENERS and HOLE PLUGS (continued)

SNAP CLIPS

Available in the following materials:

Material Code No.	Material Name
-9	Celcon

A combination of Celcon Acetal material and a resilient body design give these parts a positive "snap" and more definite grip when assembled into place.



Part No. P507 - (Size Code No.) - (Material Code No.)

Size Code No.	A	B	C	Hole Size	Panel Thk.	Size Code No.	A	B	C	Hole Size	Panel Thk.
-1	.060	1/4	1/4	.125	.032	-15	.060	15/32	5/16	.187	.187
-2	.060	9/32	1/4	.125	.062	-16	.060	25/64	11/32	.219	.032
-3	.060	5/16	1/4	.125	.093	-17	.060	27/64	11/32	.219	.062
-4	.060	11/32	1/4	.125	.125	-18	.060	29/64	11/32	.219	.093
-5	.060	9/32	5/16	.156	.032	-19	.060	31/64	11/32	.219	.125
-6	.060	5/16	5/16	.156	.062	-20	.060	33/64	11/32	.219	.156
-7	.060	11/32	5/16	.156	.093	-21	.060	35/64	11/32	.219	.187
-8	.060	3/8	5/16	.156	.125	-22	.060	13/32	1/2	.250	.032
-9	.060	13/32	5/16	.156	.156	-23	.060	27/64	1/2	.250	.062
-10	.060	5/16	5/16	.187	.032	-24	.060	29/64	1/2	.250	.093
-11	.060	11/32	5/16	.187	.062	-25	.060	31/64	1/2	.250	.125
-12	.060	3/8	5/16	.187	.093	-26	.060	33/64	1/2	.250	.156
-13	.060	13/32	5/16	.187	.125	-27	.060	35/64	1/2	.250	.187
-14	.060	7/16	5/16	.187	.156						

SPIN CLIPS

Available in the following materials:

Material Code No.	Material Name
-18	Nylon 6/6, (natural)
-78	Nylon 6/6, (black)

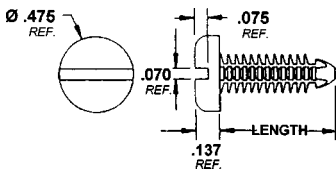
These "push-in" type fasteners with a screw can be pushed into a 1/4-20 threaded hole and then screwed in for a tighter fit, or screwed out for disassembly.

This part will also function as a standard Fin Clip for use in an unthreaded hole with a diameter of approximately 13/64".

(Part No.) - (Size Code No.) - (Material Code No.)

Slotted Pan Head

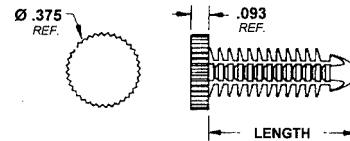
Part No. PN200



Size Code No.	Description (inches)
-1	1/4-20 x 3/8
-2	1/4-20 x 1/2
-3	1/4-20 x 5/8
-4	1/4-20 x 3/4
-5	1/4-20 x 1

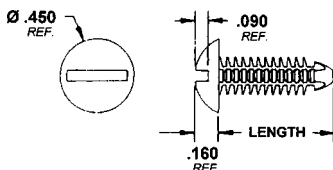
Unslotted Knurled Head

Part No. PN201



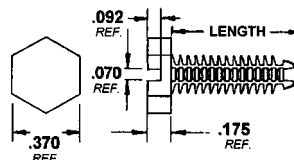
Slotted Round Head

Part No. PN202



Slotted Hex Head

Part No. PN203



HOLE PLUGS

Available in the following materials:

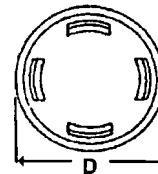
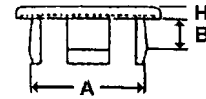
Material Code No.	Material Name
-18	Nylon 6/6, (natural)
-78	Nylon 6/6, (black)

These plugs will close unneeded chassis holes, wiring outlets, fill unused accessory openings and will cover inspection and production access holes.

They can be used as tube end caps and protective bumpers. Also ideal for drawer glides and small appliance feet.

Part No. CN222 - (Size Code No.) - (Material Code No.)

Size Code No.	Head Style	Finish	Hole Size A	Panel Thk. B	Head Size D	Head Hgt. H
-1	Binder	Smooth	.187	.031/.140	11/32	.040
-2	Binder	Matte	.187	.031/.140	11/32	.040
-3	Dome	Smooth	.218	.031/.062	3/8	.250
-4	Dome	Smooth	.218	.031/.094	3/8	.250
-5	Binder	Smooth	.250	.031/.062	27/64	.040
-6	Binder	Matte	.250	.031/.062	27/64	.040
-7	Binder	Smooth	.312	.031/.140	29/64	.055
-8	Binder	Matte	.312	.031/.140	29/64	.055
-9	Binder	Smooth	.125	.031/.094	13/64	.040
-10	Binder	Smooth	.150	.031/.094	1/4	.040
-11	Binder	Smooth	.375	.031/.140	43/64	.062
-12	Binder	Smooth	.375	.031/.140	37/64	.050
-13	Binder	Matte	.375	.031/.140	37/64	.055
-14	Binder	Smooth	.437	.031/.171	39/64	.055
-15	Binder	Matte	.437	.031/.171	39/64	.050
-16	Binder	Matte	.480	.031/.039	37/64	.050
-17	Binder	Smooth	.500	.031/.140	43/64	.062
-18	Binder	Matte	.500	.031/.140	43/64	.062
-19	Binder	Smooth	.562	.031/.140	47/64	.062
-20	Binder	Matte	.562	.031/.140	47/64	.062
-21	Binder	Smooth	.625	.031/.072	51/64	.062
-22	Binder	Matte	.625	.031/.072	51/64	.062
-23	Binder	Smooth	.687	.031/.109	57/64	.062
-24	Binder	Matte	.687	.031/.109	57/64	.062
-25	Binder	Smooth	.750	.031/.109	63/64	.062
-26	Binder	Matte	.750	.031/.109	63/64	.062
-27	Binder	Smooth	.787	.059/.080	63/64	.062
-28	Binder	Matte	.787	.059/.080	63/64	.062
-29	Binder	Smooth	.812	.031/.109	1 1/32	.062
-30	Binder	Matte	.812	.031/.109	1 1/32	.062
-31	Binder	Smooth	.875	.031/.109	1 5/64	.062
-32	Binder	Matte	.875	.031/.109	1 5/64	.062
-33	Binder	Smooth	1.000	.031/.109	1 7/32	.062
-34	Binder	Matte	1.000	.031/.109	1 7/32	.062



VENT PLUGS

Available in the following materials:

Material Code No.	Material Name
-18	Nylon 6/6, (natural)
-78	Nylon 6/6, (black)

Part No. CN201 - (Size Code No.) - (Material Code No.)

Size Code No.	Head Style	Finish	Hole Size A	Panel Thk. B	Head Size D	Head Hgt. H
-1	BINDER	MATTE	.875	.031/.109	1 5/64	.062
-2	BINDER	MATTE	1.000	.031/.109	1 7/32	.062

