

# PRODUCT PROTECTION CAPS and PLUGS

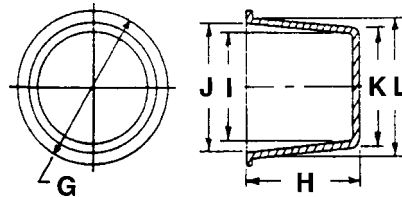
## TAPERED CAPS & PLUGS

*Tapered body provides firm friction fit when used as either cap or plug.  
Provides excellent protection against damage, dirt or moisture that occurs during manufacturing, storage or shipping. Recommended for all threaded (Unified and NPT) and non-threaded, internal and external fittings.*

**When used as Plug:** "L" dimension should be at least .020" larger than diameter to be plugged. Larger diameters may require more interference.

**When used as Cap:** "I" dimension should be at least .020" larger than diameter to be capped. Larger diameters may require more interference.

Material: Orange Low Density Polyethylene  
Meets MIL-C-5501/7



Part No. TN101 - (Size Code No.)

Size Code No.	N.P.T. Sizes		Unified Thread Sizes		Metric Thread Sizes		Dimensions (Inches)					
	Cap	Plug	Plug	Cap	Cap	Plug	G	H	I	J	K	L
-1	-	-	10/32	-	M2/M2.5	M5	5/16	13/32	.052	.117	.116	.181
-2	-	-	1/4	-	M3/3.5	M6	3/8	13/32	.110	.177	.174	.241
-3	-	-	-	-	M4	-	29/64	11/32	.146	.211	.210	.275
-4	-	-	-	-	M4.5	M7	3/8	11/32	.150	.210	.209	.269
-5	-	-	5/16	-	M5	M8 x 1	15/32	3/8	.175	.239	.239	.303
-6	-	-	-	-	M6	-	15/32	13/32	.205	.273	.267	.335
-7	-	-	3/8	5/16	M7	M10 x 1.25	1/2	13/32	.235	.303	.299	.367
-8	-	1/8	-	-	-	-	9/16	3/8	.267	.333	.331	.397
-9	-	-	7/16	-	M8 x 1	M12	9/16	13/32	.298	.364	.362	.428
-11	-	-	-	3/8	-	M12 x 1.25	19/32	13/32	.328	.395	.392	.459
-12	1/8	1/4	1/2	-	M10 x 1.25	M14	5/8	13/32	.358	.422	.422	.486
-13	-	-	-	7/16	-	M14 x 1.5	21/32	13/32	.384	.448	.448	.512
-14	-	-	9/16	1/2	-	-	11/16	5/16	.415	.485	.477	.547
-15	-	-	9/16	1/2	-	-	11/16	15/32	.408	.484	.472	.548
-16	-	-	-	-	M12 x 1.25	M16	23/32	15/32	.436	.504	.500	.568
-17	1/4	-	5/8	-	-	-	3/4	15/32	.469	.544	.533	.608
-18	-	-	-	-	-	-	3/4	11/32	.490	.550	.552	.612
-19	-	3/8	-	9/16	-	M18	25/32	1/2	.487	.569	.551	.633
-20	-	-	-	5/8	M14 x 1.5	M18 x 1.5	27/32	17/32	.518	.606	.580	.668
-21	-	-	-	-	-	-	27/32	17/32	.549	.634	.610	.695
-22	-	-	3/4	-	-	M20	7/8	1/2	.578	.665	.642	.729
-23	3/8	-	-	-	M16 x 1.5	M20 X 1.5	7/8	17/32	.614	.691	.678	.755
-24	-	1/2	-	-	-	M22	15/16	19/32	.627	.723	.691	.787
-25	-	-	-	-	-	-	55/64	3/16	.688	.743	.750	.805
-26	-	-	-	3/4	-	M22 x 1.5	1	19/32	.663	.761	.727	.825
-27	-	-	7/8	-	M18 x 1.5	M24	1	19/32	.688	.785	.752	.849
-28	1/2	-	15/16	-	-	M24 x 2	1 1/16	21/32	.739	.848	.803	.912
-29	-	-	1	7/8	M20 x 1.5	-	1 1/8	5/8	.755	.869	.819	.933
-30	-	3/4	-	-	-	-	1 1/8	21/32	.790	.894	.854	.958
-31	-	3/4	-	-	-	M27	1 1/8	3/4	.805	.909	.869	.973-

(continued next page)

Part No. TN101 - (Size Code No.)

Size Code No.	N.P.T. Sizes		Unified Thread Sizes		Metric Thread Sizes		Dimensions (Inches)					
	Cap	Plug	Plug	Cap	Cap	Plug	G	H	I	J	K	L
-32	-	3/4	-	-	-	-	1 1/8	21/32	.805	.909	.869	.973
-33	-	-	-	-	-	-	1 5/32	1/2	.895	.980	.955	1.040
-34	-	-	1 1/16	-	M22.5 x 1.5	M27 x 2	1 5/32	23/32	.855	.980	.915	1.040
-35	-	-	-	-	-	-	1 5/16	7/8	.940	.960	1.020	1.040
-36	-	-	-	-	-	-	1 1/4	1/2	.916	.985	.980	1.049
-37	-	-	-	-	-	-	1 1/4	1 1/32	.890	1.030	.950	1.090
-38	3/4	-	-	-	M24 x 2	-	1 9/32	3/4	.903	1.028	.967	1.092
-39	-	-	-	-	-	-	1 7/16	3/4	.918	1.047	.975	1.104
-40	-	-	-	1 1/16	-	M30 x 2	1 5/16	25/32	.933	1.080	.997	1.144
-41	1	1 1/4	-	-	M27 x 2	M33	1 13/32	25/32	1.029	1.155	1.093	1.219
-42	-	-	-	-	-	-	1 7/16	21/32	1.113	1.222	1.175	1.284
-43	-	-	-	-	-	-	1 43/64	21/32	1.113	1.222	1.175	1.284
-44	-	-	1 5/16	-	-	M33 x 2	1 7/16	3/4	1.115	1.222	1.179	1.286
-45	-	-	-	-	-	-	1 3/8	9/16	1.155	1.190	1.276	1.312
-46	-	-	-	-	M30 x 2	-	1 1/2	3/4	1.162	1.290	1.226	1.354
-47	1	-	-	1 5/16	-	M36 x 3	1 1/2	27/32	1.175	1.300	1.233	1.358
-48	-	-	-	-	-	-	1 1/2	3/4	1.231	1.295	1.292	1.356
-49	-	-	1 1/2	-	-	-	1 5/8	17/32	1.286	1.401	1.350	1.465
-50	-	-	-	-	M33 x 2	M39 x 3	1 5/8	3/4	1.248	1.401	1.312	1.465
-51	-	-	-	-	-	-	1 3/4	51/64	1.340	1.420	1.435	1.500
-52	-	-	-	-	-	-	1 49/64	15/16	1.282	1.450	1.344	1.507
-53	-	-	1 9/16	-	-	-	1 3/4	7/8	1.384	1.537	1.447	1.600
-54	-	1 1/4	-	-	M36 x 3	-	1 3/4	3/4	1.387	1.537	1.451	1.601
-55	-	-	1 5/8	-	-	-	1 25/32	3/4	1.455	1.538	1.519	1.602
-56	1 1/4	-	-	1 5/8	M39 x 3	-	1 7/8	25/32	1.498	1.620	1.560	1.682
-57	1 1/4	-	-	1 5/8	-	-	1 7/8	5/8	1.514	1.628	1.574	1.688
-58	-	-	-	-	-	-	1 15/16	3/4	1.569	1.686	1.633	1.750
-59	-	1 1/2	1 7/8	-	-	-	2 1/32	3/4	1.664	1.794	1.720	1.850
-60	-	1 1/2	1 7/8	-	-	-	2	25/32	1.688	1.818	1.752	1.882
-61	1 1/2	-	-	1 7/8	-	-	2 5/32	1	1.743	1.874	1.807	1.938
-62	-	-	-	-	-	-	2 3/8	43/64	1.785	1.895	1.865	1.975
-63	-	-	-	-	-	-	2 1/8	1	1.783	1.936	1.847	2.000
-65	-	-	-	-	-	-	2 13/64	3/4	1.885	2.000	1.950	2.065
-66	-	-	-	-	-	-	2 1/4	1	1.839	2.014	1.903	2.078
-67	-	-	-	-	-	-	2 1/4	1	1.917	2.069	1.981	2.133
-68	-	-	-	-	-	-	2 19/32	3/8	2.060	2.140	2.020	2.100
-69	-	-	-	-	-	-	2 5/16	3/4	1.953	2.083	2.017	2.147
-70	-	-	2 1/4	-	-	-	2 7/16	1 1/32	2.000	2.174	2.070	2.244
-71	-	-	-	2 1/4	-	-	2 9/16	1	2.074	2.250	2.136	2.312
-72	-	-	-	-	-	-	2 51/64	3/4	2.216	2.336	2.280	2.400
-73	-	-	-	-	-	-	2 17/32	1 1/32	2.065	2.344	2.129	2.408
-74	2	-	-	-	-	-	2 5/8	1	2.236	2.400	2.300	2.464
-75	-	-	-	-	-	-	2 21/32	3/4	2.220	2.383	2.300	2.464
-76	-	-	-	2 1/2	-	-	2 13/16	1 5/32	2.332	2.540	2.396	2.604
-77	-	-	-	-	-	-	2 25/32	21/32	2.418	2.581	2.482	2.645
-78	-	-	-	-	-	-	2 25/32	1	2.247	2.586	2.311	2.650
-79	-	-	-	-	-	-	2 7/8	3/4	2.497	2.626	2.561	2.690
-80	-	-	-	-	-	-	2 7/8	1	2.395	2.688	2.457	2.750
-81	-	2 1/2	-	-	-	-	2 31/32	25/32	2.579	2.728	2.641	2.790

CAPS and PLUGS (continued)

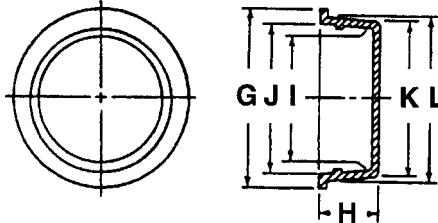
## EXTRA LARGE TAPERED CAPS & PLUGS

*Tapered body provides firm friction fit when used as either cap or plug. Provides excellent protection against damage, dirt or moisture that occurs during manufacturing, storage or shipping. Recommended for all threaded (Unified and NPT) and non-threaded internal and external fittings.*

**When used as Plug:** "L" dimension should be at least .020" larger than diameter to be plugged. Larger diameters may require more interference.

**When used as Cap:** "I" dimension should be at least .020" larger than diameter to be capped. Larger diameters may require more interference.

Material: Orange Low Density Polyethylene  
Meets MIL-C-5501/7



**Part No. TN100 - (Size Code No.)**

Size Code No.	N.P.T. Sizes		Unified Thread Sizes		Dimensions (Inches)					
	Cap	Plug	Plug	Cap	G	H	I	J	K	L
-82	-	-	-	-	2 31/32	1/2	2.595	2.728	2.655	2.788
-1	-	-	-	-	3 1/16	23/32	2.626	2.790	2.706	2.870
-2	-	-	3	-	3 1/4	3/4	2.786	2.918	2.850	2.982
-3	2 1/2	M75, M76	-	-	3 1/8	1	2.656	2.926	2.720	2.990
-4	-	-	-	-	3 11/32	3/4	2.915	3.041	2.975	3.103
-5	-	-	-	-	3 13/32	.470	2.916	3.079	2.996	3.159
-6	-	-	-	-	3 3/8	1	2.910	3.174	2.980	3.244
-7	-	-	-	-	3 1/2	1	3.018	3.297	3.088	3.367
-8	-	3	-	-	3 5/8	3/4	3.250	3.382	3.320	3.452
-9	3	-	-	-	3 11/16	1 1/8	3.200	3.492	3.270	3.562
-10	-	-	-	-	3.888	3/4	3.406	3.542	3.466	3.602
-11	-	-	-	-	4	1	3.478	3.658	3.552	3.732
-12	-	-	-	-	4	3/4	3.596	3.722	3.676	3.802
-13	-	3 1/2	-	-	4 1/8	3/4	3.710	3.840	3.790	3.920
-14	3 1/2	-	-	-	4 3/8	3/4	3.848	3.994	3.928	4.074
-15	-	-	-	-	4 17/32	3/4	3.940	4.060	4.020	4.140
-16	-	4	-	-	4 15/16	1	4.134	4.379	4.214	4.459
-17	4	-	-	-	5	1	4.288	4.542	4.368	4.622
-18	-	-	-	-	5 1/4	7/8	4.568	4.782	4.638	4.852
-19	-	-	-	-	5 7/16	11/16	4.900	5.020	4.980	5.100
-20	-	5	-	-	5 7/8	7/8	5.217	5.385	5.326	5.494
-21	5	-	-	-	6 1/8	1	5.390	5.540	5.470	5.620
-22	-	-	-	-	6 1/4	1	5.606	5.784	5.696	5.874
-23	-	-	-	-	6 5/8	1	5.918	6.094	6.008	6.184
-24	-	6	-	-	6 15/16	7/8	6.329	6.500	6.398	6.564
-25	6	-	-	-	7 3/16	1 1/2	6.562	6.668	6.668	6.774
-26	-	-	-	-	7.620	1	6.961	7.038	7.048	7.124
-27	-	-	-	-	7 15/16	1	7.253	7.575	7.338	7.656
-28	-	-	-	-	8.120	1	7.574	7.762	7.658	7.846
-29	-	-	-	-	8 3/8	1	7.877	8.120	7.968	8.146
-30	-	-	-	-	9 1/8	1 1/2	8.558	8.622	8.668	8.732
-31	-	-	-	-	10.560	31/32	9.820	10.080	9.970	10.220

## WIDE-FLANGE TAPERED CAPS & PLUGS

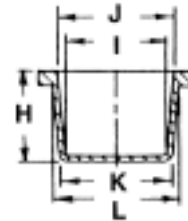
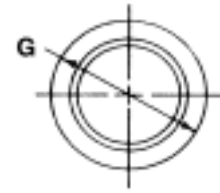
Engineered with a wider and thicker flange design for added protection and security.

This part can be used as a cap or plug.

**When used as Plug:** "L" dimension should be at least .020" larger than diameter to be plugged. Larger diameters may require more interference.

**When used as Cap:** "I" dimension should be at least .020" larger than diameter to be capped. Larger diameters may require more interference.

Material: Yellow Low Density Polyethylene  
Meets NAS 816

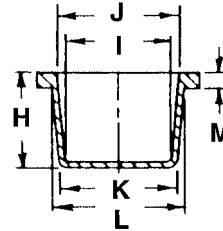
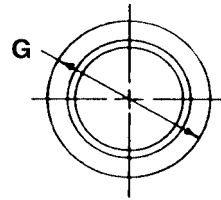


Part No. TN102- (Size Code No.)

Size Code No.	N.P.T. Sizes		Unified Thread Sizes		Metric Thread Sizes		Dimensions (Inches)					
	Cap	Plug	Plug	Cap	Cap	Plug	G	H	I	J	K	L
-1	-	-	-	-	-	-	.500	.470	.053	.133	.116	.182
-2	-	-	-	-	M4	M6	.560	.470	.112	.188	.174	.240
-3	-	-	-	-	-	-	.630	.400	.174	.245	.236	.296
-4	-	-	3/8	15/16	-	-	.690	.400	.235	.312	.300	.365
-5	1/8	-	-	-	M8	M10	.720	.400	.270	.338	.334	.392
-6	-	-	7/16	-	-	-	.750	.400	.298	.356	.368	.418
-7	1/8	-	-	3/8	M10	M12	.780	.400	.329	.387	.397	.447
-8	1/8	1/4	1/2	-	-	-	.810	.400	.357	.415	.427	.475
-9	-	-	-	-	-	-	.830	.470	.365	.450	.435	.509
-10	-	-	-	7/16	-	M14	.750	.380	.396	.444	.460	.500
-11	-	-	9/16	1/2	M12	-	.880	.470	.409	.484	.481	.547
-12	1/4	-	5/8	-	-	M16	.940	.470	.466	.567	.530	.616
-13	-	3/8	-	9/16	M14	-	.970	.470	.497	.579	.560	.631
-14	-	-	-	5/8	M16	M18	1.000	.530	.519	.605	.590	.667
-15	-	-	-	-	-	-	1.030	.530	.548	.634	.610	.687
-16	-	-	3/4	-	-	M18, M20	1.060	.530	.558	.667	.628	.725
-17	3/8	-	-	-	-	M20	1.090	.530	.588	.691	.658	.750
-18	-	1/2	-	-	M18	-	1.130	.560	.620	.718	.690	.776
-19	-	-	-	3/4	-	M22	1.160	.600	.663	.759	.725	.812
-20	-	-	-	-	-	-	1.190	.590	.693	.820	.756	.870
-21	-	-	-	7/8	-	-	1.250	.620	.755	.876	.820	.930
-22	-	-	-	-	-	-	1.250	.650	.763	.877	.825	.929
-23	-	3/4	-	-	M22	-	1.281	.650	.804	.925	.866	.976
-24	5/8	3/4	1 1/16	-	M24	M26, M27	1.340	.720	.840	.972	.915	1.035
-25	-	-	-	-	-	-	1.440	.750	.920	1.040	.984	1.106
-26	-	7/8	-	-	M27, M28	M25	1.560	.750	1.080	1.220	1.150	1.284
-27	7/8	1	1 5/16	-	M30	M32, M33	1.560	.750	1.115	1.260	1.180	1.314
-28	-	-	-	-	M32, M33	M35, M36	1.690	.750	1.166	1.324	1.236	1.382
-29	-	-	-	-	-	-	1.840	.930	1.248	1.417	1.312	1.465
-30	-	-	-	-	-	-	1.840	.780	1.249	1.427	1.312	1.466

(continued next page)

CAPS and PLUGS (continued)



## WIDE-FLANGE TAPERED CAPS & PLUGS

Continued From Page 267

Part No. TN102- (Size Code No.)

Size Code No.	N.P.T. Sizes		Unified Thread Sizes		Metric Thread Sizes		Dimensions (Inches)					
	Cap	Plug	Plug	Cap	Cap	Plug	G	H	I	J	K	L
-31	-	-	-	-	-	-	1.750	.810	1.351	1.452	1.420	1.510
-32	-	-	-	-	-	-	1.940	.750	1.378	1.552	1.452	1.604
-33	-	1/4	-	1 1/8	M38	M39, M40, M42	2.060	.750	1.516	1.649	1.580	1.714
-34	-	1 1/2	1 7/8	-	M45	M48	2.310	.750	1.650	1.828	1.730	1.888
-35	1 1/2	-	-	1 7/8	-	M48	2.380	.750	1.731	1.9165	1.810	1.975
-36	-	-	-	-	-	-	2.340	.570	1.780	1.870	1.900	1.990
-37	1 1/2	-	-	-	-	-	2.440	1.120	1.788	1.973	1.850	2.020
-38	-	-	-	-	-	-	2.380	.750	1.857	2.005	1.927	2.058
-39	1 3/4	-	2 1/4	-	M52	M55, M56	2.690	1.120	2.005	2.197	2.067	2.243
-390	-	-	-	-	-	-	2.690	1.120	2.010	2.218	2.072	2.263
-40	-	2	-	2 1/4	M58	M58, M60	2.750	1.120	2.074	2.266	2.136	2.312
-41	2	-	-	-	M60	M60, M62	2.880	1.120	2.235	2.416	2.298	2.464
-42	-	-	-	2 1/2	-	-	3.000	1.250	2.333	2.556	2.395	2.602
-43	-	-	-	-	-	-	3.060	1.000	2.245	2.583	2.305	2.620
-44	-	-	-	-	-	-	3.160	1.137	2.405	2.677	2.475	2.725
-45	-	2 1/2	-	-	-	-	3.210	.810	2.568	2.704	2.638	2.759
-46	2 1/2	-	-	-	-	M75, M76	3.440	1.120	2.623	2.917	2.685	2.955
-47	-	-	-	-	-	-	3.590	.870	2.924	3.097	2.994	3.150
-48	-	-	-	-	-	-	3.750	1.120	2.920	3.202	2.990	3.250
-49	3	-	-	-	-	-	4.000	1.250	3.154	3.515	3.225	3.562
-50	-	-	-	-	-	-	3.880	.870	3.244	3.398	3.324	3.458
-500	3 1/2	3 1/2	-	-	-	-	3.910	.870	3.265	3.418	3.347	3.486
-51	3 1/2	3 1/2	-	-	-	-	4.340	.870	3.710	3.840	3.790	3.920

## CENTER-TAB PULL PLUGS

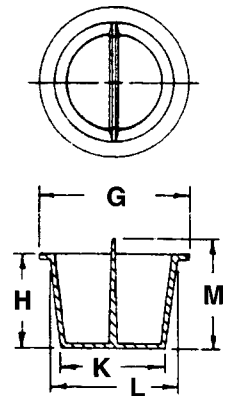
*This tapered plug features a well-engineered center-pull tab that extends above the flange area, making it easy to grasp and remove from a variety of threaded and non-threaded ports. Ideal for fittings with internal o-rings. Center-pull tab will not break off during removal.*

**When used as Plug:** "L" dimension should be at least .020" larger than diameter to be plugged. Larger diameters may require more interference.

Material: Orange Low Density Polyethylene

**Part No. TN119-** (Size Code No.)

Size Code No.	To Plug Thread Size			Dimensions (inches)				
	N.P.T. Sizes	Unified Thread Sizes	Metric Thread Sizes	G	H	K	L	M
-1	-	5/16-24	M7	.380	.340	.209	.269	.590
-2	-	-	M8/M8 x 1	.470	.380	.239	.303	.620
-3	-	-	-	.470	.410	.267	.335	.780
-4	-	3/8-24	M10/ M10 x 1.25	.500	.380	.299	.367	.780
-6	1/8	-	-	.560	.380	.331	.397	.750
-7	-	7/16-20	M12	.560	.380	.362	.428	.750
-8	-	-	M12 x 1.25	.590	.410	.392	.459	.750
-9	1/4	1/2-20	M14	.620	.410	.422	.486	.780
-10	-	-	M14 x 1.5	.660	.530	.448	.512	.530
-11	-	9/16-18	-	.690	.470	.472	.548	.810
-12	-	-	M16	.720	.810	.500	.568	.810
-14	-	5/8-18	-	.750	.720	.533	.608	.720
-15	3/8	-	M18	.780	.220	.580	.625	.340
-16	3/8	-	M18	.780	.500	.551	.633	.750
-17	-	-	M18 x 1.5	.840	.530	.580	.668	.750
-18	-	-	-	.840	.530	.610	.695	.780
-19	-	3/4-16	M20	.880	.500	.640	.727	.750
-20	-	-	M20 x 1.5	.880	.530	.678	.755	.780
-21	1/2	-	M22	.860	.222	.725	.770	.340
-22	1/2	-	M22	.940	.590	.691	.787	.750
-23	-	-	M22 x 1.5	1	.590	.727	.825	.840
-24	-	7/8-14	M24	1	.590	.752	.849	.750
-25	-	-	M24 x 2	1.060	.660	.803	.912	.910
-26	3/4	-	M27	1.120	.750	.869	.973	1.000
-27	3/4	-	M27	1.120	.660	.869	.973	.880
-28	-	1 1/16-12	M27 x 2	1.160	.710	.915	1.040	.910
-29	-	-	M30	1.250	.780	.967	1.092	1.030
-30	-	-	M30 x 2	1.340	.750	1.030	1.144	1.000
-31	1	-	M33	1.340	.500	1.100	1.210	.620
-32	1	-	M33	1.410	.780	1.093	1.219	1.000
-33	-	1 5/16-12	M33 x 2/ M36	1.440	.750	1.179	1.286	1.000
-34	-	-	-	1.500	.780	1.292	1.356	1.000
-340	-	-	-	1.530	.750	1.235	1.360	1.000
-35	-	-	-	1.720	.530	1.360	1.420	.660
-36	-	-	M39/ M39 x 3	1.620	.750	1.312	1.465	1.000



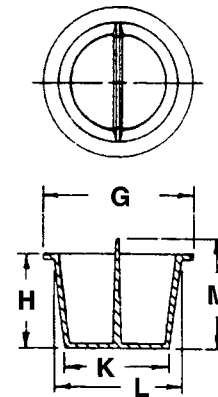
(continued next page)

CAPS and PLUGS (continued)

Continued From Page 269

Part No. TN119- (Size Code No.)

Size Code No.	To Plug Thread Size			Dimensions (inches)				
	N.P.T. Sizes	Unified Thread Sizes	Metric Thread Sizes	G	H	K	L	M
-37	-	-	-	1.750	.880	1.344	1.527	1.000
-38	1 1/4	-	-	1.750	.750	1.451	1.601	1.000
-39	-	-	-	1.940	.780	1.633	1.750	1.110
-40	-	-	-	1.310	.500	1.735	1.784	.750
-41	-	-	-	2.160	1.000	1.807	1.938	1.250
-42	1 1/2	-	-	2.030	.500	1.820	1.835	.750
-43	-	2 1/4-12	-	2.440	1.030	2.067	2.243	1.250
-44	2	-	-	2.530	.500	2.232	2.262	.750
-45	-	2 1/2-12	-	2.660	1.000	2.300	2.464	1.250
-46	2 1/2	-	-	2.970	.500	2.698	2.866	.750
-47	-	-	-	3.280	.750	2.850	2.982	1.000
-48	3	-	-	3.280	.750	3.320	3.452	1.000

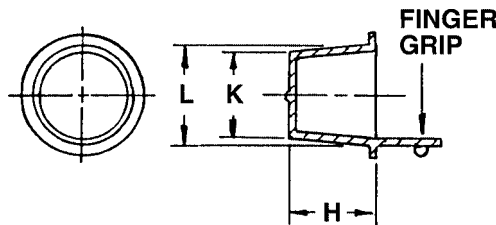


**SIDE-TAB PULL PLUGS**

Tapered plug features a side tab design that extends above the flange making it easy to grasp and remove from a variety of threaded and non-threaded fittings. Great for use in hard-to-reach locations. Side tab will facilitate ease of removal.

When used as Plug: "L" dimension should be at least .020" larger than diameter to be plugged. Larger diameters may require more interference.

Material: Orange Low Density Polyethylene



Part No. TN148 - (Size Code No.)

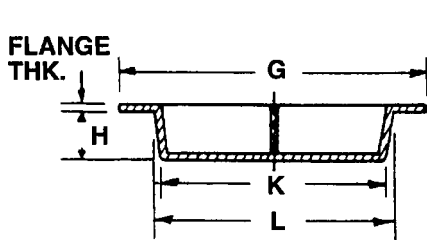
Size Code No.	To Plug Thread Sizes			Dimensions (Inches)			Size Code No.	To Plug Thread Sizes			Dimensions (Inches)		
	N.P.T.	Standard	Metric	H	K	L		N.P.T.	Standard	Metric	H	K	L
-1000	-	-	-	.410	.239	.303	-8	1/2	-	M22	.590	.691	.787
-1001	-	-	-	.410	.267	.335	-80	-	-	M22x1.5	.590	.727	.825
-1	-	3/8	M10/ M10x1.25	.380	.299	.367	-81	-	7/8	M24	.590	.752	.849
							-82	-	-	M24x2	.650	.803	.912
-100	1/8	-	-	.380	.331	.397	-83	-	-	-	.620	.819	.933
-101	-	7/16	M12	.410	.362	.428	-9	3/4	-	M27	.660	.869	.973
-2	1/4	1/2	M14	.410	.422	.486	-10	-	1 1/16	M27x12	.720	.915	1.040
-3	-	-	M14x1.5	.410	.448	.512	-102	-	-	M30x2	.780	.967	1.092
-4	-	9/16	-	.470	.472	.548	-103	-	-	M30x2	.780	.997	1.144
-40	-	-	-	.470	.500	.568	-104	1	-	M33	.780	1.093	1.219
-41	-	-	M16	.440	.533	.608	-105	-	1 5/16	M33x2	.750	1.179	1.286
-5	3/8	-	M18	.500	.551	.633	-106	-	-	-	.840	1.233	1.358
-6	-	-	M18x1.5	.530	.580	.668	-107	1 1/4	-	M36x3	.750	1.451	1.601
-60	-	-	-	.530	.610	.695	-108	-	-	-	.750	1.633	1.750
-61	-	3/4	M20	.500	.642	.729							
-7	-	-	M20x1.5	.530	.678	.755							

## EXTRA-WIDE FLANGE CENTER-PULL PLUGS

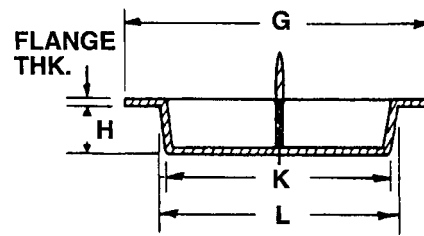
*Tapered plug features a center pull-tab design that extends above the flange making it easy to remove. The extra-wide flange design protects more surface area and prevents improper installation.*

**When used as Plug:** "L" dimension should be at least .020" larger than diameter to be plugged. Larger diameters may require more interference.

Material: Orange Low Density Polyethylene



Size Code Nos. -1, -3, -5, -9, -10, -14 and -15



Size Code Nos. -2, -4, -6, -7, -8, -11 and -13

### Part No. TN120 - (Size Code No.) - 132OR

Size Code No.	To Plug Thread Sizes			Dimensions (Inches)					
	N.P.T.	Standard	Metric	Hole Size	G	H	K	L	Flange Thk.
-1	-	9/16	-	1/2	1 1/4	17/32	.480	.540	.030
-2	-	11/16	M18 x 1.5	5/8	1 1/16	1/2	.590	.647	.030
-3	1/2	-	-	3/4	1 1/2	1/2	.730	.790	.030
-4	-	7/8	M24	-	1 5/16	1/2	.752	.849	.032
-5	3/4	-	-	1	1 7/8	17/32	.980	1.040	.040
-6	-	1 1/16	M27 x 2	-	1 19/32	3/4	.921	1.075	.060
-7	-	-	-	-	1 1/4	3/4	1.003	1.144	.070
-8	-	1 5/16	M33 x 2, M36	-	1 7/8	11/16	1.202	1.297	.062
-9	-	-	-	1 1/4	2	1/2	1.230	1.290	.040
-10	-	-	-	1 1/2	2 3/8	3/4	1.460	1.550	.050
-11	1 1/4	1 5/8	-	-	2 1/4	3/4	1.519	1.602	.062
-13	-	-	-	-	2 17/32	3/4	1.807	1.932	.050
-14	2	-	-	2	2 3/4	3/4	1.960	2.050	.050
-15	-	-	-	2 1/2	3 1/4	3/4	2.460	2.550	.050

**CAPS and PLUGS (continued)**

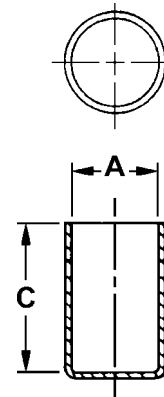
Tube caps are designed to protect the ends of threaded and non-threaded tubing, rods or packaging tubes with a friction-fit straight-wall design. Used extensively for masking of painting, plating and sandblasting operations.

Material: Orange Low Density Polyethylene  
Meets MIL-C-5501/9, MIL-C-52078, NAS 844

**SHALLOW TUBE CAPS**

Part No. TN114 - (Size Code No.)

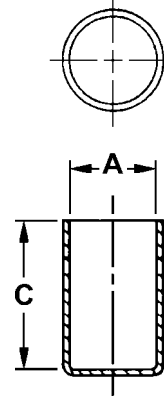
Size Code No.	To Cap Dia. A	C	Size Code No.	To Cap Dia. A	C	Size Code No.	To Cap Dia. A	C
-2	3/16	.470	-7	7/16	.500	-103	1	.450
-3	1/4	.500	-8	1/2	.500	-11	1	.620
-4	5/16	.380	-10	3/4	.380	-12	1 1/4	.500
-5	3/8	.460	-100	1	.500	-15	2 1/8	.500
-6	7/16	.220	-102	1	.500			



**LONG TUBE CAPS**

Part No. TN116 - (Size Code No.)

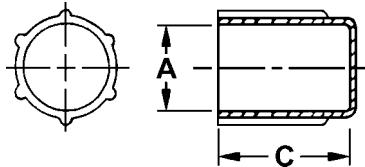
Size Code No.	To Cap Dia. A	C	Size Code No.	To Cap Dia. A	C	Size Code No.	To Cap Dia. A	C
-1	15/64	1.130	-7	3/4	2.470	-15	1 3/8	1.590
-2	3/8	1.120	-8	7/8	1.750	-16	1 1/2	1.750
-3	27/64	1.250	-10	1	1.750	-17	1 5/8	1.250
-4	7/16	1.500	-12	1 1/4	1.500	-18	1 27/32	1.210
-5	5/8	2.500	-13	1 1/4	1.750	-19	2	1.530
-6	5/8	1.500	-14	1 3/8	1.500			



**RIBBED TUBE CAPS**

Part No. TN115 - (Size Code No.)

Size Code No.	To Cap Dia. A	C
-1	3/8	.750
-3	7/16	.620
-4	15/32	.750
-5	1/2	.440
-6	9/16	.420



Outside ribs on this cap help with the removal process and provide additional protection.

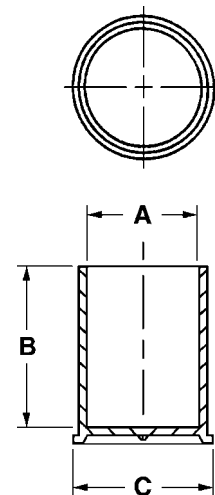
Straight-sided tube caps with a flanged to for easy removal. Designed to protect threaded and non-threaded parts. Can be used for a variety of applications.

**FLANGED TUBE CAPS**

Material: Orange Low Density Polyethylene

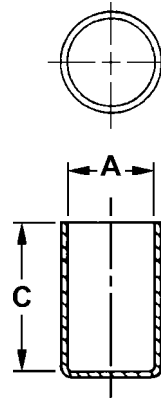
Part No. TN143 - (Size Code No.)

Size Code No.	To Cap Thread Size	Dimensions (inches)			Size Code No.	To Cap Thread Size	Dimensions (inches)		
		A	B	C			A	B	C
-1	5/16	.315	.840	.510	-3	11/16	.678	.880	.840
-101	3/8	.377	.840	.580	-4	3/4	.737	.880	.910
-102	M14	.535	.810	.690	-5	7/8	.866	.880	1.030
-2	5/8	.611	.880	.750	-7	1 1/16	1.048	1.120	1.220



Tube caps on pages 272 and 273 are designed to protect the ends of threaded and non-threaded tubing, rods or packaging tubes with a friction-fit straight-wall design. Used extensively for masking of painting, plating and sandblasting operations.

Material: Orange Low Density Polyethylene  
Meets MIL-C-5501/9, MIL-C-52078, NAS 844



## STANDARD TUBE CAPS

Part No. TN113 - (Size Code No.)

Size Code No.	To Cap Dia. A	C	Size Code No.	To Cap Dia. A	C	Size Code No.	To Cap Dia. A	C	Size Code No.	To Cap Dia. A	C
-2	1/8	.620	-18	5/8	.880	-32	1 1/8	.880	-48	2 39/64	1.000
-3	1/8	.750	-19	5/8	.940	-33	1 1/4	1.000	-49	2 5/8	1.000
-4	5/32	.590	-20	11/16	.880	-34	1 5/16	1.000	-50	2 3/4	1.000
-5	11/64	.620	-21	11/16	.750	-35	1 3/8	.620	-51	3	1.000
-6	3/16	.620	-22	3/4	.880	-36	1 3/8	1.000	-52	3 1/8	1.380
-7	13/64	.620	-23	3/4	.940	-37	1 1/2	1.000	-53	3 1/4	1.000
-9	1/4	.880	-24	13/16	.690	-38	1 5/8	1.000	-54	3 7/16	1.000
-10	17/64	.750	-25	13/16	.880	-39	1 23/32	1.000	-55	3 1/2	1.000
-11	5/16	.880	-26	7/8	.620	-40	1 3/4	.880	-550	3 17/32	2.000
-12	3/8	.880	-27	7/8	.620	-41	1 3/4	1.000	-56	4	1.130
-13	7/16	.880	-28	7/8	.880	-42	1 7/8	1.000	-57	4 1/8	1.500
-130	7/16	1.000	-29	29/32	.750	-43	2	1.000	-58	4 13/16	.640
-14	1/2	.880	-290	29/32	.880	-44	2 1/8	1.000	-59	4 7/8	.920
-16	9/16	.620	-302	1	.750	-45	2 1/4	.880	-60	8	2.300
-15	9/16	.880	-31	1	1.000	-46	2 1/4	1.000			
-17	5/8	.880	-310	1 1/16	1.000	-47	2 1/2	.880			

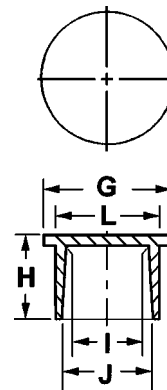
## MULTI-PURPOSE (UNIFIED) CAPS

Designed to protect unified threads, but can be used to protect both threaded and non-threaded fittings. Easy-to-use flange makes for quick removal. Can be used as a cap or plug to protect a variety of applications.

Material: Orange Low Density Polyethylene

Part No. TN109 - (Size Code No.)

Size Code No.	Unified Thread Size	Dimensions (inches)				
		G	H	I	J	L
-1	3/8	.530	.660	.360	.360	.420
-2*	7/16	.620	.560	.420	.430	.490
-3	9/16	.750	.830	.525	.551	.611
-4	5/8	.810	.470	.605	.605	.665
-5*	5/8	.810	.750	.605	.605	.665
-50	-	.940	.470	.687	.627	-
-6	-	1.000	.580	.775	.785	.865
-8*	-	1.000	.720	.780	.780	.840
-9	13/16	1.050	.630	.785	.795	.855
-10	-	1.120	.920	.760	.780	.840
-11*	7/8	1.140	.830	.845	.845	.905



\*Cap has 4 external vertical ribs