

CAPS and PLUGS (continued)

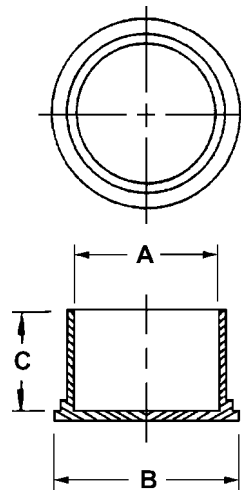
## ELECTRICAL CONNECTOR CAPS

Straight-sided, thin-wall closures designed to protect threaded connectors. Flanged end allows easy removal in hard-to-reach areas. Versatile design protects a variety of threaded and non-threaded applications.

Part No. TN111 - (Size Code No.)

Size Code No.	To Cap Thread Size	A	B	C
-1	1/2	.476	.720	.500
-2	5/8	.600	.840	.500
-3	3/4	.724	.940	.500
-4	7/8	.849	1.090	.500
-5	1	.974	1.220	.500
-6	1 1/8	1.097	1.340	.560
-7	1 3/16	1.168	1.410	.560
-8	1 1/4	1.221	1.440	.560
-9	1 3/8	1.344	1.590	.560
-10	1 7/16	1.408	1.660	.560
-11	1 1/2	1.467	1.690	.560
-12	1 3/4	1.716	2.000	.560
-13	2	1.964	2.220	.620
-14	2 1/4	2.210	2.440	.620
-15	2 1/2	2.460	2.690	.620
-16	2 3/4	2.730	2.960	.620
-17	3	2.980	3.220	.620
-18	4	3.922	4.190	1.000
-19	5	4.900	5.120	1.250

Material: Red Low Density Polyethylene  
Meets NAS-813.



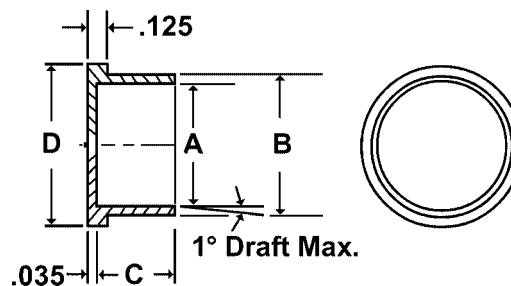
## ELECTRICAL CONNECTOR CAPS

Although designed to protect electrical connectors from dust, damage and moisture, this part can be used as a cap or plug for a variety of different applications. Flanged end makes for easy removal in hard-to-reach areas.

Part No. TN158 - (Size Code No.)

Size Code No.	A	B	C	D
-100	.245	.305	.500	.430
-102	.305	.365	.500	.500
-104	.368	.438	.500	.620
-1	.480	.540	.500	.740
-106	.542	.602	.500	.780
-2	.605	.665	.500	.840
-3	.720	.775	.500	.970
-4	.850	.905	.500	1.120
-5	.973	1.035	.500	1.220
-6	1.093	1.155	.560	1.330
-60	1.168	1.238	.560	1.430
-7	1.231	1.301	.560	1.470
-8	1.340	1.410	.560	1.590
-80	1.408	1.478	.560	1.650
-9	1.463	1.533	.560	1.700
-10	1.715	1.790	.560	1.950
-11	1.965	2.040	.560	2.220
-12	2.215	2.290	.600	2.440
-13	2.440	2.530	.600	2.660
-14	2.720	2.812	.600	2.960
-15	2.960	3.050	.600	3.220

Material: Red Low Density Polyethylene  
Meets MS-90376 and NAS 831.



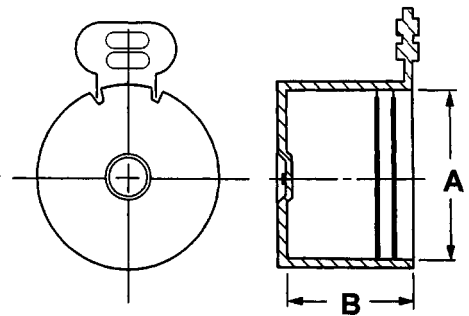
## TEAR-TAB (STRAIGHT-THREAD) CAPS

Protect threads from damage, Easy-to-use tear-tab caps employ friction for snug fit. To remove, simply pull tear tab and discard.

Material: Natural Low Density Polyethylene

Part No. TN160 - (Size Code No.)

Size Code No.	To Cap Thread Size	SAE/JIC Fitting Size	A	B
-1	3/8	3	.367	.440
-2	7/16	4	.428	.460
-3	1/2	5	.492	.460
-4	9/16	6	.554	.480
-5	5/8	-	.616	.480
-6	11/16	7	.678	.480
-7	3/4	8	.741	.560
-8	13/16	9	.803	.560
-9	7/8	10	.865	.650
-10	1	11	.990	.650
-11	1 1/16	12	1.053	.750
-12	1 3/16	13	1.178	.750
-13	1 5/16	16	1.303	.750
-14	1 7/16	17	1.428	.750
-15	1 5/8	20	1.616	.820
-16	1 11/16	21	1.678	.820
-17	1 7/8	24	1.866	.950
-18	2 1/2	32	2.491	1.100



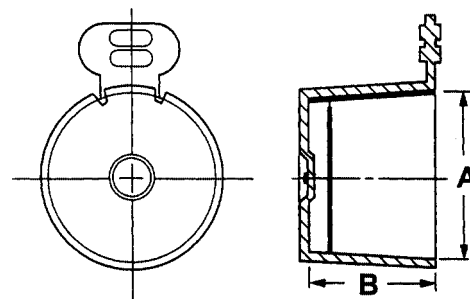
## TEAR TAB CAPS

Designed to protect national pipe threads (NPT), its versatility allows for numerous types of applications. Engineered to engage threads by using a friction fit. To remove, simply pull tear tab and discard.

Material: Natural Low Density Polyethylene

Part No. TN142 - (Size Code No.)

Size Code No.	To Cap N.P.T. Size	A	B
-100	1/16	.300	.320
-1	1/8	.400	.320
-2	1/4	.553	.490
-3	3/8	.670	.490
-4	1/2	.835	.640
-5	3/4	1.040	.650
-6	1	1.302	.810
-7	1 1/4	1.655	.840
-8	1 1/2	1.880	.850
-9	2	2.360	.890



CAPS and PLUGS (continued)

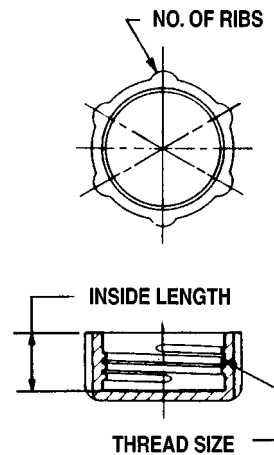
## THREADED (UN/UNS) CAP

Originally engineered for use in aircraft and hydraulic equipment applications. Seals out contaminants while protecting threads. Rolled threads allow cap to be either pushed or threaded on. Special threads meet UN and UNS specifications.

Material: Blue High Density Polyethylene  
Meets Mil-8779-ANSI BI-I

Part No. TN103 - (Size Code No.) Material: Blue High Density Polyethylene

Size Code No.	Inside Tube O.D.	Thread Size	Length +/- .010	No. of Ribs
-1	3/16	3/8-28	.200	4
-2	1/4	7/16-24	.240	6
-3	5/16	1/2-24	.240	6
-4	3/8	9/16-20	.260	6
-5	1/2	23/32-20	.270	8
-6	5/8	27/32-18	.340	8
-7	3/4	1-16	.380	8
-8	7/8	1 1/8-16	.400	8
-9	1	1 1/4-14	.430	8
-10	1 1/4	1 33/64-14	.430	8
-11	1 1/4	1 37/64-14	.430	8
-12	1 1/2	1 25/32-14	.500	8
-13	1 1/2	1 27/32-14	.500	8



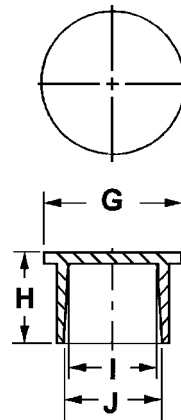
## NON-THREADED (NPT) CAPS

Designed to cap NPT fittings, but can be used to protect a variety of items. A heavy-duty, tapered, multi-use cap with a flange for easy insertion and removal.

Material: Orange Low Density Polyethylene

Part No. TN105 - (Size Code No.)

Size Code No.	N.P.T. Size	Dimensions (Inches)			
		G	H	I	J
-1	1/8	.590	.370	.363	.385
-2	1/4	.730	.420	.493	.523
-3	3/8	.890	.620	.585	.662
-4	1/2	1.060	.590	.725	.856
-5	3/4	1.250	.690	.990	1.040
-6	1	1 33/64	.690	1.257	1.305
-7	1 1/2	2.110	.750	1.842	1.898
-8	-	2.250	1.290	1.962	1.972



## THREADED (STRAIGHT) CAPS

*Designed to protect straight threads on studs and fittings. Rolled threads allow you to either push or thread on. Tight seal makes an ideal mask for painting or plating, as well as a deterrent for contaminants.*

Material: Orange Low Density Polyethylene  
 Meets MIL-C-5501/11 (NAS-814)  
 MIL-C-5501/3, NAS 832

Part No. TN112 - (Size Code No.)

Size Code No.	To Cap Thread Size	Dimensions ( inches)		No. Ribs
		Tubing Size	Inside Length	
-1	3/8-24	3/16	.470	6
-2	7/16-20	1/4	.470	6
-3	7/16-24	1/4	.310	6
-4	1/2-20	5/16	.310	6
-5	1/2-20	5/16	.500	6
-6	1/2-20	5/16	.880	6
-7	9/16-18	3/8	.500	6
-8	5/8-18	3/8	.470	6
-10	5/8-18	3/8	.590	6
-11	5/8-18	3/8	.750	6
-12	5/8-24	-	.380	6
-13	3/4-16	1/2	.500	6
-14	3/4-16	1/2	.560	6
-140	3/4-16	1/2	.630	6
-15	3/4-20	-	.590	6
-16	3/4-20	-	.500	6
-17	7/8-14	5/8	.720	6
-18	7/8-18	5/8	.780	6
-19	7/8-20	5/8	.720	6
-21	1-20	-	.780	8
-22	1 1/16-12	3/4	.750	8
-23	1 1/16-14	3/4	.750	8
-24	1 1/8-18	-	.470	8
-26	1 1/4-18	-	.470	8
-27	1 5/16-12	1	.880	8
-28	1 3/8-18	1	.470	8
-29	1 5/8-12	1 1/4	.910	8
-30	1 7/8-12	1 1/2	1.000	8

