

CAPS and PLUGS (continued)

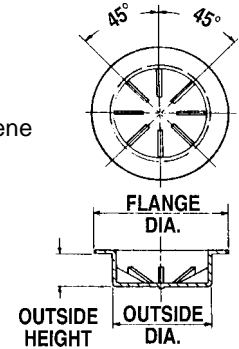
SUCKER- ROD COUPLING PLUGS

Heavy-duty plug designed to protect sucker-rod couplings but may fit a variety of applications where extra protection is required.

Part No. TN145 - (Size Code No.)

Material: Black Low Density Polyethylene

Size Code No.	Coupling Size	A Outside Dia.	B Outside Hgt.	C Flange Dia.	Size Code No.	Coupling Size	A Outside Dia.	B Outside Hgt.	C Flange Dia.
-1	5/8	.975	3/8	1 3/8	-3	7/8	1.225	3/8	1 11/16
-2	3/4	1.100	3/8	1 1/2	-4	1	1.415	3/8	2



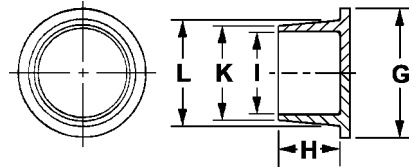
UNIFIED PLUGS

Designed to protect hydraulic and air-hose fittings; however, its unique style lends itself to a variety of applications. Thick, heavy-duty flanged end for good fit and ease of removal. Tapered body ensures a tight fit. Can also be used as a cap.

Part No. TN108 - (Size Code No.)

Material: Orange Low Density Polyethylene

Size Code No.	Standard Thread Size	Hole Size	Dimensions (Inches)				
			G	H	I	K	L
-1	-	9/16	3/4	1/2	.490	.550	.590
-2	3/4	-	1 3/32	1/2	.594	.658	.750
-3	7/8	-	1 3/16	1/2	.691	.755	.870
-4	1 1/16	-	1 5/8	5/8	.880	.940	1.044
-5	-	1 1/16	1 5/16	5/8	.970	1.040	1.100
-6	1 1/4	-	1 29/32	19/32	1.118	1.188	1.305
-7	1 3/4	-	2 17/64	19/32	1.405	1.545	1.636
-8	-	1 5/8	1 7/8	3/4	1.530	1.600	1.660
-10	-	1 7/8	2 1/8	3/4	1.780	1.850	1.910



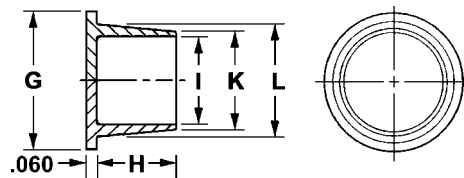
NPT PLUGS

Designed to plug NPT fittings but can be used to protect a variety of applications. A heavy-duty, multi-use plug with an outside-body taper and flange for easy insertion and removal. Flush fit blocks out contamination. Can also be used as a cap.

Part No. TN106 - (Size Code No.)

Material: Orange Low Density Polyethylene

Size Code No.	N.P.T. Size	Dimensions (Inches)				
		G	H	I	K	L
-1	1/8	33/64	9/32	.271	.331	.397
-2	1/4	39/64	9/32	.362	.422	.486
-3	3/8	49/64	1/2	.490	.550	.640
-4	1/2	29/32	1/2	.621	.691	.787
-5	3/4	1 3/32	5/8	.800	.870	.974
-6	1	1 11/32	21/32	1.023	1.093	1.219
-7	1 1/4	1 23/32	3/4	1.370	1.450	1.600
-8	1 1/2	2 1/32	3/4	1.662	1.742	1.822
-9	2	2 15/32	55/64	2.152	2.232	2.262



CAPS and PLUGS (continued)

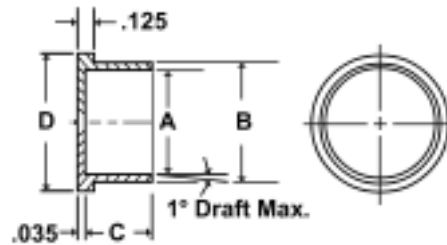
ELECTRICAL CONNECTOR PLUGS

Designed to protect electrical connectors from dust, damage and moisture. The versatility of the design allows them to be used as a cap or plug for a variety of different applications. Flanged end makes for easy removal from hard-to-reach areas.

Material: Yellow Low Density Polyethylene
Meets MS-90376, NAS 837

Part No. TN150 - (Size Code No.)

Size Code No.	Dimensions (inches)			
	A	B	C	D
-1	.483	.413	.620	.670
-2	.595	.530	.620	.750
-3	.715	.655	.620	.860
-4	.845	.785	.620	1.030
-5	.963	.893	.620	1.120
-6	1.088	1.028	.620	1.400
-7	1.215	1.150	.620	1.250
-8	1.340	1.270	.620	1.500
-9	1.460	1.390	.620	1.640
-10	1.580	1.540	.620	1.810
-11	1.718	1.648	.620	1.880
-12	1.970	1.890	.620	2.120
-13	2.210	2.140	.620	2.340
-14	2.450	2.380	.620	2.600
-15	2.700	2.630	.620	2.880
-16	2.950	2.880	.620	3.120



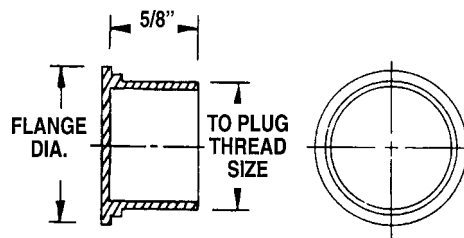
ELECTRICAL CONNECTOR PLUGS

Straight-sided, thin-wall closures designed to protect threaded connectors. Flanged end makes for easy removal in hard-to-reach areas. Versatile design will protect a variety of threaded and non-threaded applications.

Material: Yellow Low Density Polyethylene
Meets NAS 820

Part No. TN110 - (Size Code No.)

Size Code No.	To Plug Thread Size	Flange Diameter
-1	1/2	.660
-2	5/8	.750
-3	3/4	.840
-4	7/8	1.000
-5	1	1.160
-6	1 1/8	1.250
-7	1 1/4	1.380
-8	1 3/8	1.500
-9	1 1/2	1.620
-10	1 3/4	1.880
-11	2	2.090
-12	2 1/4	2.380
-13	2 1/2	2.620



CAPS and PLUGS (continued)

THIN - WALL TUBING PLUGS, type K/SAE J-528

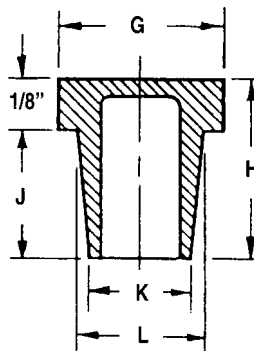
For Smaller Copper and Aluminum Tubing Sizes

Specifically designed to plug and protect Type K and SAE J-528 tubing. Tapered body provides snug friction fit for small diameter copper tubing. Flanged top sits flush with the outside diameter of tube to protect roundness and seal out contaminants.

Material: Orange Low Density Polyethylene
Meets NAS 843 (MIL-C-5501/8, MIL-C-52078)

Part No. TN121 - (Size Code No.)

Size Code No.	Dimensions (Inches)					
	Tubing O.D.	G	H	J	K	L
-2	3/16	.190	3/8	.250	.105	.140
-3	1/4	.250	1/2	.380	.165	.210
-4	5/16	.310	1/2	.380	.225	.275
-40	3/8	.380	.665	.540	.290	.330
-5	3/8	.380	5/8	.500	.290	.345
-6	1/2	.500	1/2	.380	.410	.470
-7	5/8	.630	11/16	.560	.530	.585
-70	11/16	.690	5/8	.500	.550	.640
-8	3/4	.750	11/16	.560	.665	.710
-9	29/32	.910	3/4	.620	.734	.834



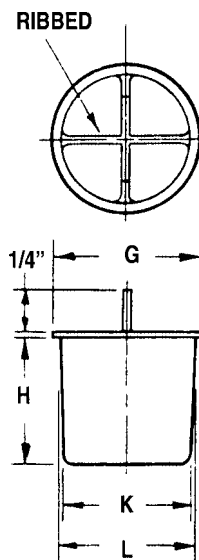
THIN - WALL TUBING PLUGS, type K

Specifically designed to protect Type K-style tubing. Tapered body with reinforced-cross braces provides exceptional protection to the configuration of the tube end.

Material: Green Low Density Polyethylene

Part No. TN122 - (Size Code No.)

Size Code No.	Tubing Size O.D.	Tubing Size I.D.	Dimensions (Inches)			
			G	H	K	L
-1	3/8	.308	.380	3/8	.302	.312
-2	1/2	.406	.500	3/8	.394	.414
-3	5/8	.531	.630	1/2	.523	.543
-4	3/4	.656	.750	5/8	.646	.676
-5	7/8	.750	.880	3/4	.740	.770
-6	1 1/8	1.000	1.120	7/8	.990	1.020
-7	1 3/8	1.250	1.380	1	1.240	1.280
-8	1 5/8	1.487	1.620	1	1.477	1.517
-9	2 1/8	1.968	2.130	1	1.960	2.010
-10	2 5/8	2.444	2.630	1	2.420	2.470
-11	3 1/8	2.916	3.130	1	2.892	2.952



THIN - WALL TUBING PLUGS, type L and M

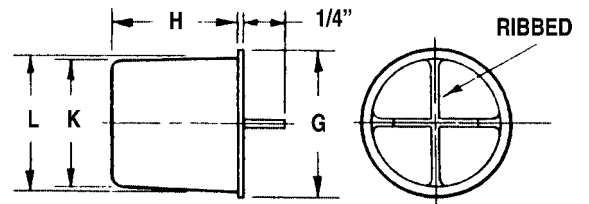
For Copper and Aluminum Tubing

Specifically designed to plug and protect Type L and M-style tubing. Tapered body with reinforced-cross braces provides exceptional protection for the configuration of the tube.

Material: Blue Low Density Polyethylene

Part No. TN123 - (Size Code No.)

Size Code No.	Tubing Size O.D.	Dimensions (Inches)			
		G	H	K	L
-1	3/8	.380	3/8	.320	.320
-2	1/2	.500	3/8	.420	.440
-3	5/8	.630	1/2	.540	.560
-4	3/4	.750	5/8	.660	.690
-5	7/8	.880	3/4	.780	.810
-6	1 1/8	1.130	7/8	1.020	1.050
-7	1 3/8	1.380	1	1.260	1.300
-8	1 5/8	1.630	1	1.500	1.540
-9	2 1/8	2.130	1	1.970	2.020
-10	2 5/8	2.630	1	2.450	2.500
-11	3 1/8	3.130	1	2.930	2.990
-12	3 5/8	3.630	1	3.410	3.450
-13	4 1/8	4.130	1	3.890	3.930



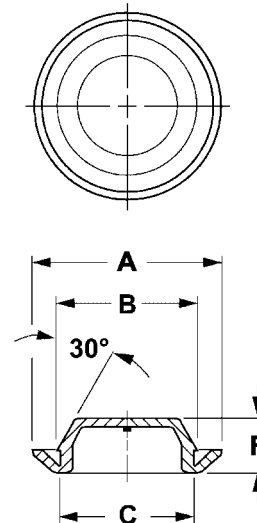
SNAP-IN PLUGS, Recessed Style

Provides an attractive, finished appearance for access holes in sheet metal. Widely used on automobile bodies, tanks, appliances or in any application where an attractive appearance is needed. Flexible yet durable. Snap-in ring provides a secure fit.

Material: Black Low Density Polyethylene

Part No. TN127 - (Size Code No.)

Size Code No.	To Hole Plug Size	Dimensions (Inches)			
		A	B	C	F
-1	1/2	.880	.538	.500	.285
-2	3/4	1.160	.800	.750	.360
-20	13/16	1.150	.850	.812	.290
-3	7/8	1.250	.915	.875	.350
-4	1	1.380	1.050	1.000	.350
-40	1 3/32	1.440	1.010	1.160	.350
-41	1 1/8	1.530	1.880	1.125	.440
-5	1 1/4	1.630	1.308	1.250	.350
-6	1 1/2	1.880	1.550	1.500	.370
-60	1 5/8	2.000	1.675	1.625	.350
-7	1 3/4	2.130	1.800	1.750	.350
-8	2	2.380	2.050	2.000	.360
-9	2 1/2	3.000	2.570	2.500	.380
-10	3	3.560	3.060	3.000	.410



CAPS and PLUGS (continued)

FLARED-FITTING PLUGS, Style A

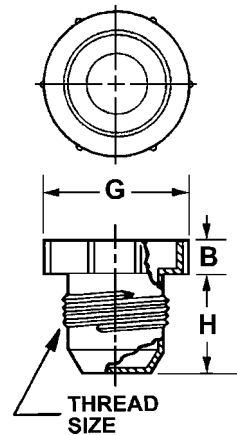
For the Automotive, Aircraft, Hydraulic and Pneumatic Industries

Designed to protect flared fittings as well as 37°-flared fittings without gasket. Engineered with knurled head for ease of application. Will meet low-pressure testing requirements.

Material: Red High Density Polyethylene

Part No. TN124 - (Size Code No.)

Size Code No.	To Plug Thread Size	To Plug Tubing Size	Dimensions		
			B	H	G
-1	3/8-24	3/16	.180	.460	.560
-2	7/16-20	1/4	.220	.500	.720
-3	1/2-20	5/16	.250	.530	.810
-4	9/16-18	3/8	.280	.530	.880
-5	5/8-18	3/8	.250	.590	.940
-6	3/4-16	1/2	.280	.750	1.060
-7	7/8-14	5/8	.280	.840	1.250
-8	1 1/16-12	3/4	.250	.860	1/410
-9	1 1/16-14	3/4	.250	.860	1/410
-10	1 3/16-12	7/8	.250	.930	1.500
-11	1 5/16-12	1	.250	.910	1.750
-12	1 1/2-12	-	.310	.930	1.810
-13	1 5/8-12	1 1/4	.340	.940	2.220
-14	1 3/4-12	-	.340	.970	2.310
-15	1 7/8-12	1 1/2	.380	1.060	2.470
-16	2 1/4-12	1 3/4	.380	1.310	2.750
-17	2 1/2-12	2	.380	1.310	3.090



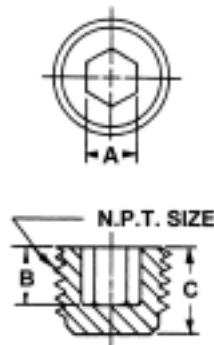
THREADED PIPE PLUGS Hexagonal Socket

Socket design allows for threads to be protected during low-pressure testing and in-plant processing. Commonly used to keep contaminants and moisture from threaded port. Oil and heat resistant to 250°F. Not for permanent applications.

Material: Black Low Density Polyethylene
Meets MIL-C-5501/5, NAS 840

Part No. TN130 - (Size Code No.)

Size Code No.	To Plug N.P.T. Size	Dimensions (inches)		
		A	B	C
-1	1/4-18	.250	.310	1/2
-2	3/8-18	.310	.380	9/16
-3	1/2-14	.380	.380	9/16
-4	3/4-14	.560	.500	5/8
-5	1-11 1/2	.630	.530	3/4



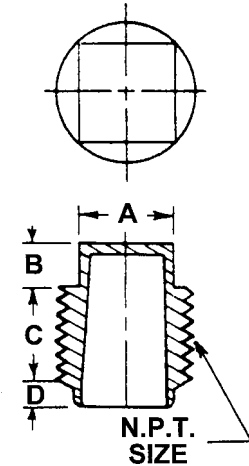
THREADED PIPE PLUGS Square Head

Ideal for low-pressure testing and in-house handling. Square-head design makes for easy application. Protects threaded ports against contaminants and moisture. Resists oil and heat up to 250°F. Not for permanent applications.

Material: Black High Density Polyethylene
Meets MIL-C-5501/5, NAS 840

Part No. TN129 - (Size Code No.)

Size Code No.	N.P.T. Size	Dimensions (inches)			
		A	B	C	D
-1	1/8-27	.280	1/4	.290	1/16
-2	1/4-18	.380	1/4	.350	1/16
-3	3/8-18	.440	1/4	.420	1/16
-4	1/2-14	.560	1/4	.470	1/16
-5	3/4-14	.620	1/4	.520	3/32
-6	1 -11 1/2	.810	1/4	.590	3/32
-7	1 1/4-11 1/2	1.000	3/8	.830	1/8
-8	1 1/2-11 1/2	1.250	3/8	.830	1/8



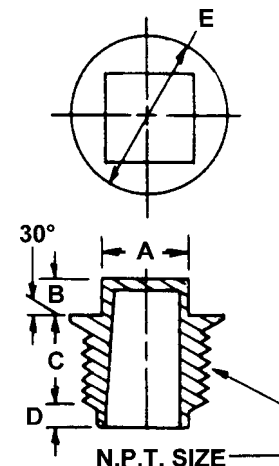
THREADED PIPE PLUGS Square Head with Flange

Flange design allows plug to protect circumference of port while protecting threads from contaminants and moisture. Commonly used during low-pressure testing and in-plant processing. Combats oil and heat up to 250°F. Not for permanent applications.

Material: Black High Density Polyethylene
Meets MIL-C-5501/5, NAS 840

Part No. TN128 - (Size Code No.)

Size Code No.	N.P.T. Size	Dimensions (inches)				
		A	B	C	D	E
-1	1/8-27	.430	3/16	.290	3/32	9/16
-2	1/4-18	.440	1/4	.350	3/32	11/16
-3	3/8-18	.440	1/4	.410	3/32	13/16
-4	1/2-14	.560	1/4	.470	3/32	1
-5	3/4-14	.630	1/4	.520	1/8	1 1/4



CAPS and PLUGS (continued)

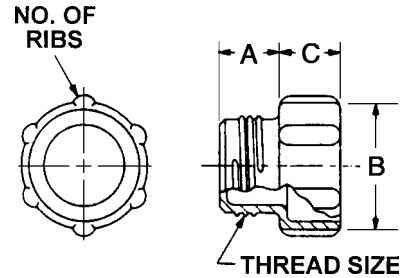
THREADED (UN and UNS) PLUGS

Originally engineered for use in aircraft and hydraulic equipment applications. Seals out contaminants while protecting threads. Rolled threads allow cap to be either pushed or threaded. Special threads conform to UN and UNS specifications.

Material: Blue High Density Polyethylene

Part No. TN104 - (Size Code No.)

Size Code No.	To Plug Tubing Size	To Plug Thread Size	Dimensions (inches)			No. of Ribs
			A	B	C	
-1	3/16	3/8-28	.280	.440	.250	4
-2	1/4	7/16-24	.300	.560	.310	6
-3	5/16	1/2-24	.300	.620	.310	6
-4	3/8	9/16-20	.320	.690	.310	6
-5	1/2	23/32-20	.320	.880	.310	6
-6	5/8	27/32-18	.400	1.000	.310	6
-7	3/4	1-16	.420	1.120	.310	8
-8	7/8	1 1/8-16	.450	1.250	.250	8
-9	1	1 1/4-14	.450	1.380	.250	8
-10	1 1/4	1 33/64-14	.450	1.620	.250	8
-11	1 1/4	1 37/64-14	.460	1.750	.250	8
-12	1 1/2	1 25/32-14	.550	2.000	.250	8
-13	1 1/2	1 27/32-14	.550	2.120	.250	8



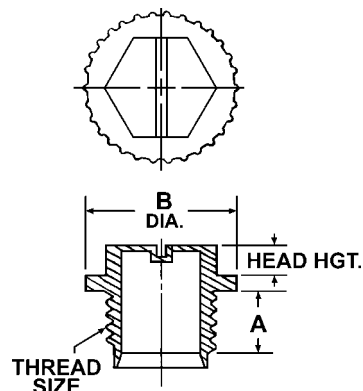
GENERAL PURPOSE THREADED PLUGS

General purpose threaded plug that can be utilized for a variety of different applications. Can be tightened by hand, hex, wrench or screw-driver. Will meet low-pressure testing requirements.

Material: Red Polypropylene

Part No. TN125 - (Size Code No.)

Size Code No.	To Plug Thread Size	Length Across Flats	Head Hgt.	Dimensions (Inches)	
				A	B
-100	7/16-20	.440	.190	.300	.680
-101	1/2-20	.500	.190	.360	.740
-102	9/16-18	.500	.190	.350	.810
-1	5/8-18	.560	.170	.340	.740
-2	3/4-16	.680	.180	.440	.890
-200	3/4-16	.690	.190	.440	1.030
-3	7/8-14	.750	.240	.500	1.020
-300	1 1/16-14	.880	.250	.630	1.310
-301	1-1/8-12	.880	.190	.620	1.470
-302	1 5/16-12	.880	.250	.880	1.560
-303	1-5/8-12	1.000	.250	1.000	2.000
-304	1-7/8-12	1.250	.250	1.000	2.250



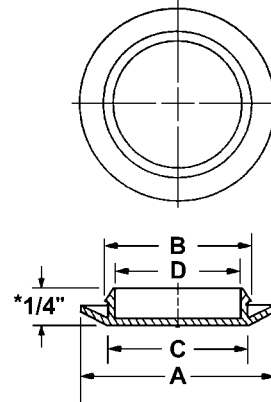
SNAP-IN PLUGS, Flush Style

Provides an attractive, finished appearance for access holes in sheet metal. Widely used on automobile bodies, tanks, appliances or in any application where an attractive appearance is needed. Flexible yet durable. Snap-in ring provides a secure fit.

Material: Black Low Density Polyethylene

Part No. TN126 - (Size Code No.)

Size Code No.	To Plug Hole Size	Dimensions (Inches)			
		A	B	C	D
-1	3/8	.750	.410	.375	.310
-2	3/8	.750	.410	.375	.305
-200	7/16	.690	.470	.437	.360
-201	9/16	.880	.600	.560	.450
-3	1/2	.870	.540	.500	.400
-4	5/8	1.060	.675	.615	.500
-5	5/8	.810	.675	.625	.545
-6	11/16	1.060	.710	.680	.556
-7	3/4	1.000	.790	.750	.625
-70	13/16	1.110	.850	.812	.670
-8	7/8	1.160	.910	.875	.750
-82	7/8	1.300	.910	.875	.780
-80	15/16	1.310	.980	.937	.780
-9	1	1.380	1.070	1.010	.875
-10	1 3/32	1.310	1.150	1.090	1.000
-100	1 1/8	1.530	1.180	1.120	1.010
-11	1 3/16	1.560	1.240	1.200	1.050
-12	1 1/4	1.620	1.290	1.250	1.125
-120	1 5/16	1.680	1.360	1.310	1.140
-13	1 1/2	1.880	1.540	1.500	1.400
-14	1 3/4	2.120	1.790	1.750	1.620
-15	2	2.440	2.080	2.020	1.875
-150	2 1/8	2.490	2.170	2.100	1.940
-16	2 1/2	3.000	2.580	2.520	2.375
-17	2 5/8	3.120	2.675	2.645	2.520
-18	3	3.380	3.060	3.000	2.850
-180	3 1/8	3.520	3.180	3.110	2.940
-181	3 3/8	3.750	3.430	3.375	3.220
-182	3 1/2	3.860	3.560	3.500	3.340
-20	4	4.500	4.100	4.020	3.900
-21	4	4.500	4.100	4.020	3.900



- * -1 .19 Overall Height
- * -70 .37 Overall Height
- * -100 .43 Overall Height
- * -182 .35 Overall Height
- * -20 .50 Overall Height
- * -21 .50 Overall Height

MULTI-PURPOSE PLUGS

Attractive plug to finish off holes in sheet metal or other surfaces. The "Quatra-Level" locking grooves on spring tabs adhere tightly to varying gauges of materials. Easy to install.

Material: Black and White Nylon

Part No. TN141 - (Size Code No.)

Size Code No.	Fits Hole Size (In.)
-1	1

