

## TUBE FITTINGS - Commercial Grade

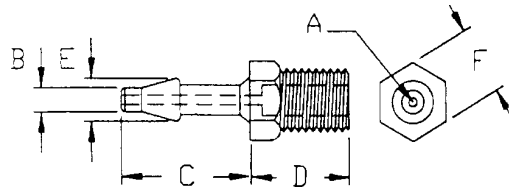
Commercial Grade Fittings provide a leak-proof seal with pressure up to 125 P.S.I. without the use of clamps or ties. No special tools or ferrules are required for fitting insertion.

Available in the following materials:

Material Code No.	Material Name
-11	Polypropylene
-18	Nylon 6/6, (natural) (other materials available)

### BARBED TUBE TO PORT FITTING with Internal Thread

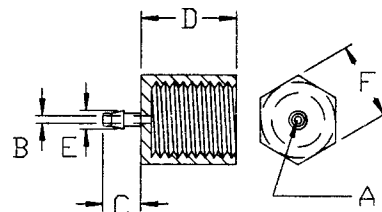
Part No. O300N - (Size Code No.) - (Material Code No.)



Size Code No.	Thread	Tubing I.D.	A	B	C	D	E	F
-1	10-32 UNF	1/16	.046	.075	.275	.285	.108	.245
-3	10-32 UNF	3/32	.060	.095	.375	.250	.145	.245
-4	10-32 UNF	1/8	.078	.125	.375	.250	.175	.245
-5	10-32 UNF	1/8	.078	.125	.290	.260	.175	.245
-6	10-32 UNF	5/32	.092	.150	.530	.260	.230	.245
-7	1/4-28 UNF	1/8	.078	.125	.480	.385	.175	.312
-8	1/4-28 UNF	1/4	.140	.250	.765	.385	.350	.312
-9	1/8-27 NPT	1/16	.046	.068	.280	.615	.105	.438
-10	1/8-27 NPT	1/16	.046	.068	.340	.615	.125	.438
-11	1/8-27 NPT	3/32	.060	.095	.375	.615	.145	.438
-12	1/8-27 NPT	1/8	.092	.125	.430	.625	.175	.438
-13	1/8-27 NPT	5/32	.100	.156	.540	.595	.230	.438
-14	1/8-27 NPT	3/16	.125	.187	.625	.625	.281	.438
-15	1/8-27 NPT	1/4	.187	.250	.766	.625	.359	.438
-150	1/8-27 NPT	3/8	.250	.375	.937	.625	.472	.434
-16	1/4-18 NPT	1/16	.046	.070	.278	.690	.107	.531
-17	1/4-18 NPT	1/8	.080	.125	.370	.700	.175	.520
-18	1/4-18 NPT	3/16	.130	.187	.525	.700	.250	.525
-19	1/4-18 NPT	1/4	.187	.250	.700	.700	.340	.531
-190	1/2-14 NPT	1/4	.156	.250	.849	1.108	.345	.875
-20	1/2-14 NPT	3/8	.275	.375	.937	1.093	.475	.875
-21	1/2-14 NPT	1/2	.390	.500	.937	1.093	.600	.875

### BARBED TUBE TO PORT FITTING with Internal Thread

Part No. O301 - (Size Code No.) - (Material Code No.)



Size Code No.	Thread	Tubing I.D.	A	B	C	D	E	F
-1	1/8-27 FPT	1/8	.078	.125	.375	.659	.175	.625
-2	1/4-18 FPT	1/8	.078	.125	.375	.659	.175	.625

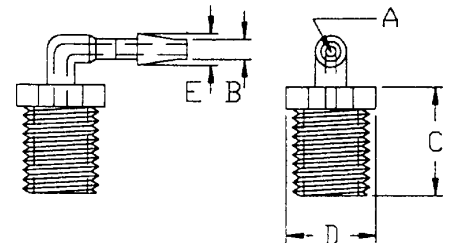
Available in the following materials:

Material Code No.	Material Name
-11	Polypropylene
-18	Nylon 6/6, (natural) (other materials available)

### 90° BARBED TUBE TO PORT FITTING with Internal Thread

Part No. O302N - (Size Code No.) - (Material Code No.)

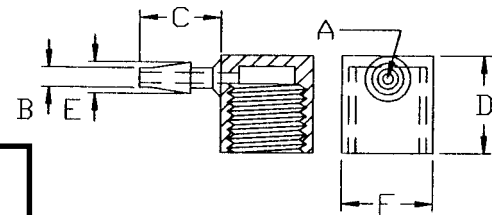
Size Code No.	Thread	Tubing I.D.	A	B	C	D	E
-1	10-32 UNF	1/16	.045	.062	.262	.312	.105
-2	10-32 UNF	1/8	.078	.125	.297	.245	.175
-3	1/8-27 NPT	1/8	.078	.125	.617	.430	.175
-4	1/8-27 NPT	3/16	.125	.187	.625	.430	.250
-5	1/8-27 NPT	1/4	.180	.250	.630	.430	.345
-6	3/8-18 NPT	3/16	.130	.187	.648	.625	.275
-7	1/2-14 NPT	1/4	.156	.250	.938	.875	.345



### 90° BARBED TUBE TO PORT FITTING with Internal Thread

Part No. O303 - (Size Code No.) - (Material Code No.)

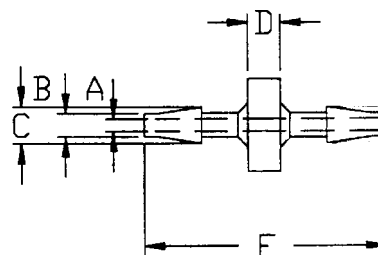
Size Code No.	Thread	Tubing I.D.	A	B	C	D	E	F
-1	1/8-27 FPT	3/16	.125	.187	.625	.625	.250	.560
-2	1/8-27 FPT	1/4	.190	.242	.680	.615	.340	.560



### BARBED CONNECTOR

Part No. O304 - (Size Code No.) - (Material Code No.)

Size Code No.	Tubing I.D.	A	B	C	D	E
-1	1/16	.047	.068	.125	.100	.770
-2	1/16	.046	.065	.103	.100	.660
-3	3/32	.060	.095	.145	.100	.698
-4	1/8	.080	.125	.185	.100	.797
-5	5/32	.106	.150	.238	.130	1.190
-6	3/16	.120	.187	.275	.125	1.175
-7	1/4	.187	.250	.348	.200	1.948
-8	1/4	.187	.250	.347	.150	1.275
-9	3/8	.245	.375	.465	.250	2.093
-10	1/2	.390	.500	.600	.250	2.050



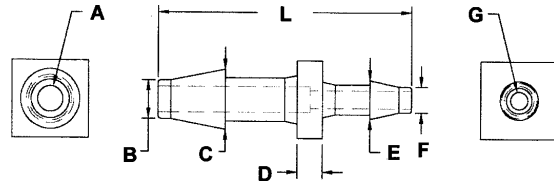
TUBE FITTINGS - COMMERCIAL GRADE (continued)

Available in the following materials:

Material Code No.	Material Name
-11	Polypropylene
-18	Nylon 6/6, (natural) (other materials available)

**BARBED REDUCING CONNECTOR**

Part No. O350 - (Size Code No.) - (Material Code No.)

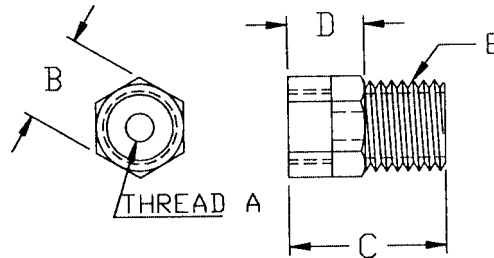


Size Code No.	Tubing I.D.	A	B	C	D	E	F	G	L
-1	1/16 x 3/32	.060	.095	.145	.100	.125	.068	.047	.770
-2	1/16 x 1/8	.080	.125	.180	.100	.125	.068	.047	.830
-3	1/16 x 1/8	.080	.125	.175	.100	.106	.068	.047	.750
-4	3/32 x 1/8	.080	.125	.175	.125	.145	.095	.060	.800
-5	3/16 x 1/8	.125	.182	.292	.125	.187	.125	.086	1.250
-6	1/4 x 5/32	.187	.250	.350	.200	.229	.154	.100	1.540
-7	1/4 x 3/16	.135	.250	.350	.125	.275	.187	.135	1.560
-8	3/8 x 1/8	.250	.375	.470	.210	.175	.125	.077	1.508
-9	3/8 x 1/4	.245	.375	.465	.250	.347	.250	.190	2.049

**THREADED CONNECTOR**

Part No. O344 - (Size Code No.) - (Material Code No.)

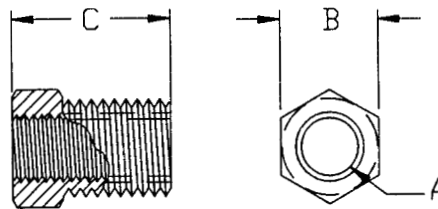
Size Code No.	Thread A	B	C	D	E
-1	1/8-27FPT	.555	.875	.500	1/8-27 NPT



**THREADED REDUCER**

Part No. O312 - (Size Code No.) - (Material Code No.)

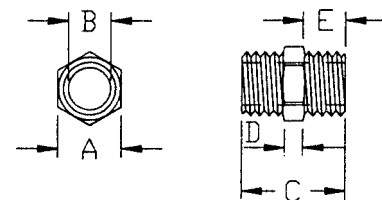
Size Code No.	External Thread	Internal Thread A	B	C
-1	1/8-27 NPT	10-32 UNF	.575	.440
-2	1/8-27 NPT	1/4-28 UNF	.575	.440
-3	1/4-18 NPT	10-32 UNF	.700	.525
-4	1/4-18 NPT	1/4-28 UNF	.700	.525
-5	1/4-18 NPT	1/8-27 NPT	.700	.525



**MINIATURE THREADED NIPPLE**

Part No. O311 - (Size Code No.) - (Material Code No.)

Size Code No.	Thread	A	B	C	D	E
-1	10-32 UNF x 10-32 UNF	.250	.078	.375	.175	.100



TUBE FITTINGS - COMMERCIAL GRADE (continued)

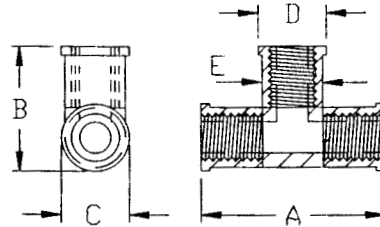
Available in the following materials:

Material Code No.	Material Name
-11	Polypropylene
-18	Nylon 6/6, (natural) (other materials available)

### INTERNALLY THREADED TEE

Part No. O346 - (Size Code No.) - (Material Code No.)

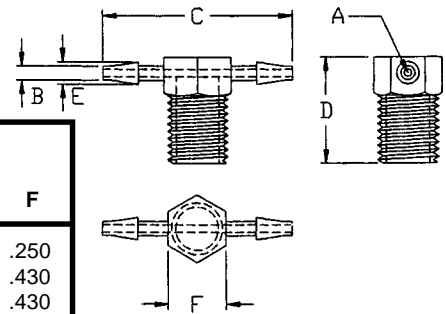
Size Code No.	Thread	A	B	C	D	E
-1	1/8-27 FPT	1.500	1.000	.525	.560	.531
-2	1/4-18 FPT	1.750	1.218	.680	.718	.687



### BRANCH TEE

Part No. O307 - (Size Code No.) - (Material Code No.)

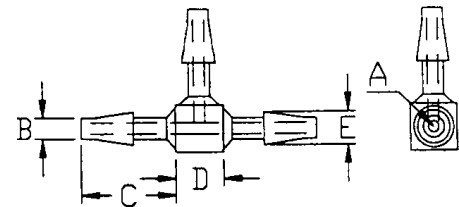
Size Code No.	Tubing I.D.	Thread	A	B	C	D	E	F
-1	1/8	10-32 UNF	.080	.125	1.000	.588	.180	.250
-2	1/16	1/8-27 NPT	.045	.065	1.140	.880	.120	.430
-3	1/4	1/8-27 NPT	.185	.250	1.655	1.053	.345	.430
-4	1/8	1/8-27 NPT	.080	.125	1.175	.860	.175	.437



### BARBED TEE

Part No. O305 - (Size Code No.) - (Material Code No.)

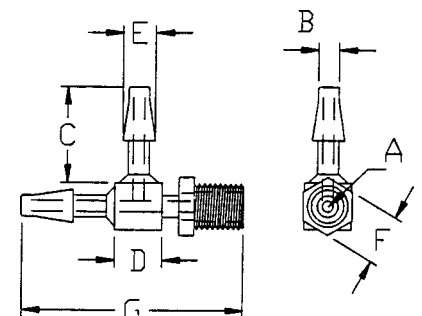
Size Code No.	Tubing I.D.	A	B	C	D	E	Size Code No.	Tubing I.D.	A	B	C	D	E
-1	1/16	.046	.068	.290	.125	.107	-7	3/16	.112	.187	.660	.345	.275
-3	3/32	.061	.095	.375	.187	.145	-8	1/4	.195	.250	.840	.375	.350
-4	1/8	.088	.125	.395	.250	.175	-9	3/8	.245	.370	.925	.485	.465
-5	5/32	.100	.156	.540	.250	.231	-10	1/2	.390	.500	.900	.625	.600
-6	3/16	.120	.187	.605	.307	.250							



### BRANCH ELBOW

Part No. 0308 - (Size Code No.) - (Material Code No.)

Size Code No.	Tubing I.D.	Thread	A	B	C	D	E	F	G
-1	3/16	1/8-27 NPT	.135	.190	.635	.305	.280	.430	1.687



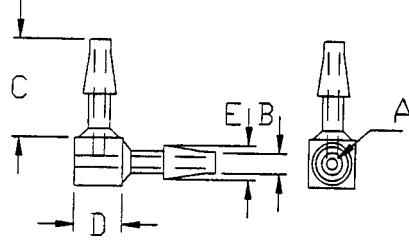
TUBE FITTINGS - COMMERCIAL GRADE (continued)

Available in the following materials:

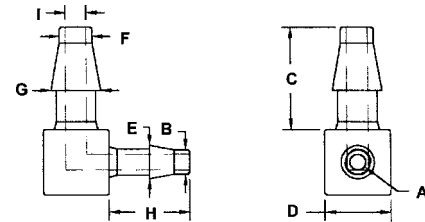
Material Code No.	Material Name
-11	Polypropylene
-18	Nylon 6/6, (natural) (other materials available)

**BARBED ELBOW**

Part No. O306 - (Size Code No.) - (Material Code No.)



Size Code No.	Tubing I.D.	A	B	C	D	E
-1	1/16	.046	.068	.320	.125	.105
-2	3/32	.060	.095	.375	.187	.145
-3	1/8	.078	.125	.375	.250	.175
-300	5/32	.100	.156	.540	.250	.231
-4	3/16	.115	.187	.600	.345	.275
-5	1/4	.187	.250	.820	.375	.350
-6	3/8	.245	.370	.925	.500	.465
-7	1/2	.390	.500	.900	.625	.600



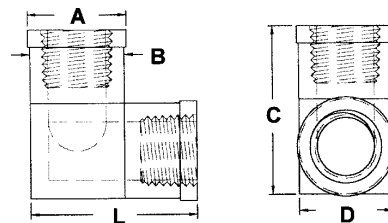
**BARBED REDUCING ELBOW**

Part No. O352 - (Size Code No.) - (Material Code No.)

Size Code No.	Tubing I.D.	A	B	C	D	E	F	G	H	I
-1	3/32 x 1/16	.050	.055	.257	.125	.090	.091	.145	.206	.060
-2	1/8 x 3/32	.060	.096	.390	.250	.125	.125	.189	.308	.080
-20	5/32 x 3/32	.042	.096	.531	.250	.120	.156	.200	.313	.078
-3	3/16 x 1/8	.079	.127	.712	.345	.183	.187	.281	.480	.128
-4	3/16 x 5/32	.101	.159	.713	.341	.231	.187	.281	.562	.126

**INTERNALLY THREADED ELBOW**

Part No. O353 - (Size Code No.) - (Material Code No.)



Size Code No.	Thread	A	B	C	D	L
-1	1/4-18 FPT	.720	.680	1.218	.680	1.218

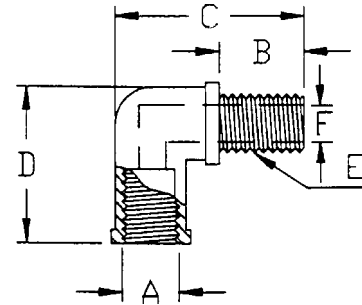
Available in the following materials:

Material Code No.	Material Name
-11	Polypropylene
-18	Nylon 6/6, (natural) (other materials available)

## THREADED ELBOW with Internal/External Thread

Part No. O345N - (Size Code No.) - (Material Code No.)

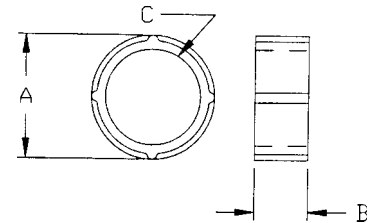
Size Code No.	Thread A	B	C	D	Thread E	F
-1	1/8-27 FPT	.325	1.187	1.062	1/8-27 NPT	.250
-2	1/4-18 FPT	.325	1.187	1.062	1/8-27 NPT	.250
-3	1/8-27 FPT	.531	1.310	1.058	1/4-18 NPT	.245
-4	1/4-18 FPT	.531	1.310	1.058	1/4-18 NPT	.245
-5	1/8-27 FPT	.475	1.465	1.403	3/8-18 NPT	.380
-6	1/4-18 FPT	.475	1.465	1.403	3/8-18 NPT	.380
-7	3/8-18 FPT	.475	1.465	1.403	3/8-18 NPT	.380



## LOCKING SLEEVE

Part No. O309 - (Size Code No.) - (Material Code No.)

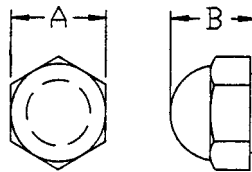
Size Code No.	Tubing O.D.	A	B	C	Size Code No.	Tubing O.D.	A	B	C
-1	1/8	.310	.245	.147	-30	.255	.435	.315	.255
-2	5/32	.375	.281	.176	-4	1/4	.435	.315	.260
-3	3/16	.400	.300	.215	-5	3/8	.625	.375	.425



## DOME NUT

Part No. O313 - (Size Code No.) - (Material Code No.)

Size Code No.	Thread	A	B
-1	10-32 UNF	.365	.400
-2	1/4-20 UNF	.425	.475
-3	1/8-27 FPT	.662	.710
-4	1/4-18 FPT	.750	.810
-5	3/8-18 FPT	.945	.980

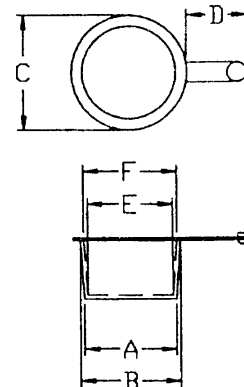


## PLASTOPS THREAD PROTECTOR

Standard Material: -129BL High Density Polyethylene (Blue)

Part No. O332 - (Size Code No.) - (129BL)

Size Code No.	Thread	A	B	C	D	E	F
-1	1/8 NPT	.340	.365	.500	.285	.290	.310
-2	1/4 NPT	.455	.485	.625	.275	.400	.425
-3	3/8 NPT	.570	.600	.730	.300	.525	.570
-4	1/2 NPT	.705	.730	.850	.300	.645	.690
-5	3/4 NPT	.925	.960	1.110	.336	.850	.910



**TUBE FITTINGS - COMMERCIAL GRADE (continued)**

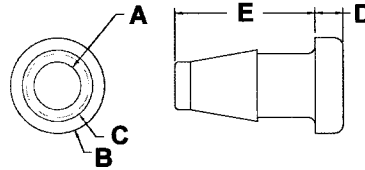
Available in the following materials:

Material Code No.	Material Name
-11	Polypropylene
-18	Nylon 6/6, (natural) (other materials available)

**BARBED TUBING PLUG**

Part No. O354 - (Size Code No.) - (Material Code No.)

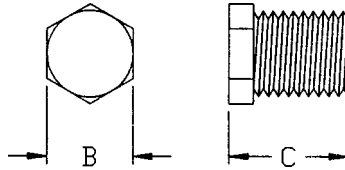
Size Code No.	Tubing I.D.	A	B	C	D	E
-1	1/16	.065	.125	.093	.031	.340
-2	3/32	.095	.188	.143	.056	.350
-3	1/8	.125	.281	.188	.078	.390
-4	5/32	.156	.281	.231	.094	.540
-5	3/16	.187	.375	.281	.113	.563
-6	1/4	.250	.432	.350	.125	.778
-7	3/8	.363	.563	.470	.125	.900



**THREADED PLUG**

Part No. O310 - (Size Code No.) - (Material Code No.)

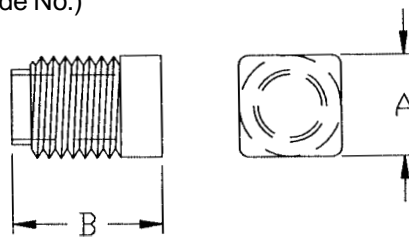
Size Code No.	Thread	B	C
-1	10-32 UNF	.250	.275
-2	1/8-27 NPT	.438	.580
-3	1/4-18 N PT	.531	.720



**AUTOMOTIVE THREADED PLUG**

Part No. O315 - (Size Code No.) - (Material Code No.)

Size Code No.	Thread	A	B
-1	3/8-24 UNF	.380	.580
-2	7/16-24 UNF	.440	.620
-3	1/2-20 UNF	.500	.660
-4	9/16-18 UNF	.560	.690
-5	9/16-20 UNF	.560	.700

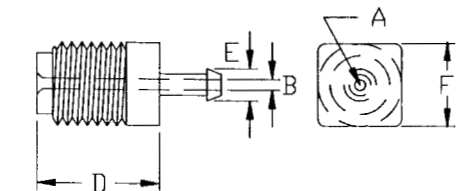


Standard Material: -18 Nylon 6/6, (natural)

**AUTOMOTIVE TUBE TO PORT FITTING**

Part No. O314 - (Size Code No.) - (Material Code No.)

Size Code No.	Tubing I.D.	Thread	A	B	C	D	E	F
-1	5/32	3/8-24 UNF	.110	.173	.380	.580	.230	.380
-2	5/32	7/16-24 UNF	.100	.173	.380	.620	.230	.440
-3	5/32	1/2-20 UNF	.110	.173	.380	.670	.230	.500
-4	5/32	9/16-18 UNF	.100	.173	.380	.690	.230	.560
-5	5/32	9/16-20 UNF	.110	.173	.380	.700	.230	.560



Standard Material: -18 Nylon 6/6, (natural)