

TUBE FITTINGS - Premium Grade

Premium Grade Fittings are molded from 100% virgin material. Once the fitting's single sharp barb is inserted into the tubing, a secure, leak-proof seal is formed that can hold up to 125 P.S.I. without the use of clamps or ties.

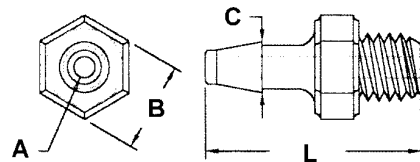
*Available in the following materials:

Material Code No.	Material Name	Material Code No.	Material Name
-11	Polypropylene	-46	Polycarbonate
-37	PVDF	-215	White Nylon 6/6

BARBED TUBE TO PORT FITTING with Special Taper Thread

Part No. O370 - (Size Code No.) - (Material Code No.)

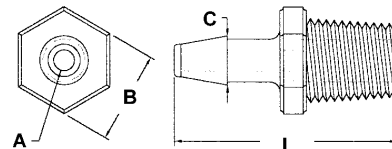
Size Code No.	Thread	Tubing I.D.	A	B	C	L
-1	10-32 UNF	1/16	.047	.250	.093	.515
-2	10-32 UNF	3/32	.060	.250	.140	.609
-3	10-32 UNF	1/8	.080	.250	.185	.673
-4	10-32 UNF	5/32	.100	.250	.232	.820



BARBED TUBE TO PORT FITTING

Part No. O371 - (Size Code No.) - (Material Code No.)

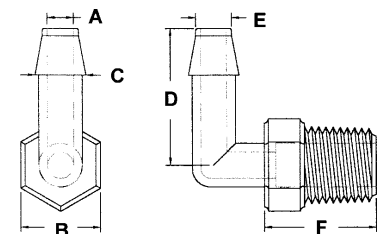
Size Code No.	Thread	Tubing I.D.	A	B	C	L
-1	10-32 UNF	1/16	.047	.250	.093	.515
-2	10-32 UNF	3/32	.060	.250	.140	.615
-3	10-32 UNF	1/8	.080	.250	.185	.675
-4	10-32 UNF	5/32	.100	.250	.232	.820
-5	1/16-27 NPT	1/16	.047	.375	.093	.596
-6	1/16-27 NPT	3/32	.060	.375	.140	.684
-7	1/16-27 NPT	1/8	.080	.375	.185	.755
-8	1/16-27 NPT	5/32	.100	.375	.232	.877
-9	1/16-27 NPT	3/16	.120	.375	.262	1.014
-10	1/8-27 NPT	1/16	.047	.438	.093	.772
-11	1/8-27 NPT	3/32	.060	.438	.140	.934
-12	1/8-27 NPT	1/8	.080	.438	.185	.920
-13	1/8-27 NPT	5/32	.100	.438	.232	1.127
-14	1/8-27 NPT	3/16	.120	.438	.262	1.185
-15	1/8-27 NPT	1/4	.187	.438	.350	1.295



BARBED 90° TUBE TO PORT FITTING

Part No. O378 - (Size Code No.) - (Material Code No.)

Size Code No.	Thread	Tubing I.D.	A	B	C	D	E	F
-1	1/4-18 NPT	1/4	.180	.250	.924	.780	.350	.550



TUBE FITTINGS - PREMIUM GRADE (continued)

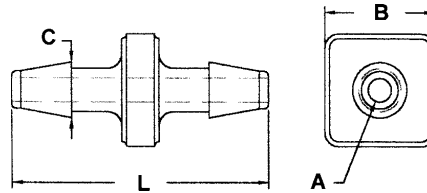
*Available in the following materials:

Material Code No.	Material Name	Material Code No.	Material Name
-11	Polypropylene	-46	Polycarbonate
-37	PVDF	-215	White Nylon 6/6

BARBED CONNECTOR

Part No. O372 - (Size Code No.) - (Material Code No.)

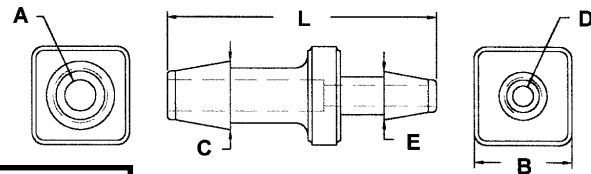
Size Code No.	Tubing I.D.	A	B	C	L
-1	1/16	.047	.375	.093	.500
-2	3/32	.060	.375	.140	.710
-3	1/8	.080	.375	.185	.825
-4	5/32	.100	.375	.232	1.115
-5	3/16	.120	.375	.262	1.325
-6	1/4	.187	.375	.350	1.550



BARBED REDUCING CONNECTOR

Part No. O373 - (Size Code No.) - (Material Code No.)

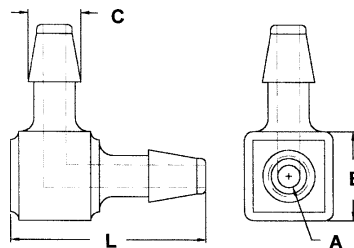
Size Code No.	Tubing I.D.	A	B	C	D	E	L
-1	1/16 x 3/32	.047	.375	.140	.060	.093	.609
-2	1/16 x 1/8	.047	.375	.185	.080	.093	.672
-3	1/16 x 5/32	.047	.375	.232	.100	.093	.806
-4	1/16 x 3/16	.047	.375	.262	.120	.093	.915
-5	3/32 x 1/8	.060	.375	.185	.080	.140	.767
-6	3/32 x 5/32	.060	.375	.232	.100	.140	.916
-7	3/32 x 3/16	.060	.375	.262	.120	.140	1.026
-8	1/8 x 5/32	.080	.375	.232	.100	.140	.925
-9	1/8 x 3/16	.080	.375	.262	.120	.185	1.081
-10	1/8 x 1/4	.080	.375	.350	.187	.185	1.180
-11	5/32 x 3/16	.100	.375	.262	.120	.232	1.233
-12	5/32 x 1/4	.100	.375	.350	.187	.232	1.330
-13	1/4 x 3/16	.120	.375	.345	.187	.262	1.435



BARBED ELBOW

Part No. O376 - (Size Code No.) - (Material Code No.)

Size Code No.	Tubing I.D.	A	B	C	L
-1	1/16	.047	.188	.093	.391
-2	3/32	.060	.250	.140	.563
-3	1/8	.080	.313	.185	.690
-4	5/32	.100	.375	.232	.875
-5	3/16	.120	.375	.262	.922
-6	1/4	.187	.375	.350	1.077

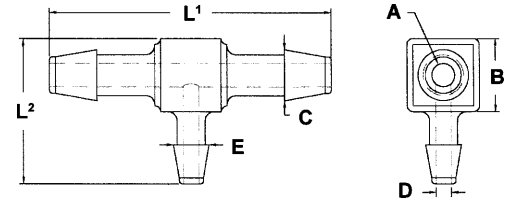


*Available in the following materials:

Material Code No.	Material Name	Material Code No.	Material Name
-11	Polypropylene	-46	Polycarbonate
-37	PVDF	-215	White Nylon 6/6

BARBED REDUCING TEE

Part No. O375 - (Size Code No.) - (Material Code No.)

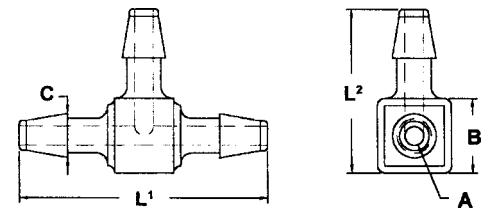


Size Code No.	Tubing I.D.	A	B	C	D	E	L1	L2
-1	1/16 x 1/8	.047	.313	.093	.080	.185	.725	.688
-2	1/8 x 1/16	.080	.313	.185	.047	.093	1.077	.515
-3	1/8 x 3/32	.080	.313	.185	.060	.140	1.071	.626
-4	1/8 x 5/32	.080	.375	.185	.100	.232	1.130	.880
-5	1/8 x 3/16	.080	.375	.185	.120	.262	1.126	.922
-6	1/8 x 1/4	.080	.375	.185	.187	.350	1.144	1.085
-7	5/32 x 1/16	.100	.375	.232	.047	.093	1.395	.584
-8	5/32 x 3/32	.100	.375	.232	.060	.140	1.450	.687
-9	5/32 x 1/8	.100	.375	.232	.080	.185	1.395	.755
-10	5/32 x 3/16	.100	.375	.232	.120	.262	1.375	.922
-11	5/32 x 1/4	.100	.375	.232	.187	.380	1.375	1.062
-12	3/16 x 1/8	.120	.375	.262	.080	.185	1.460	.755
-13	1/4 x 3/32	.187	.375	.350	.060	.140	1.751	.682
-14	1/4 x 1/8	.187	.375	.350	.080	.185	1.751	.750
-15	1/4 x 5/32	.187	.375	.350	.100	.232	1.756	.892

BARBED TEE

Part No. O374 - (Size Code No.) - (Material Code No.)

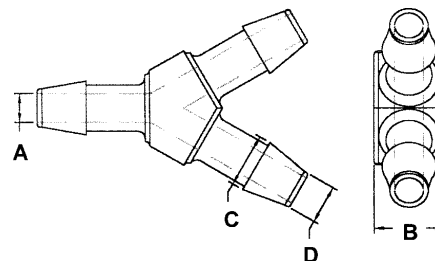
Size Code No.	Tubing I.D.	A	B	C	L1	L2
-1	1/16	.047	.199	.095	.600	.400
-2	3/32	.060	.250	.140	.875	.563
-3	1/8	.080	.313	.185	1.079	.695
-4	5/32	.100	.375	.232	1.399	.875
-5	3/16	.120	.375	.262	1.470	.925
-6	1/4	.187	.375	.340	1.751	1.063



BARBED "Y" FITTING

Part No. O377 - (Size Code No.) - (Material Code No.)

Size Code No.	Tubing I.D.	A	B	C	D
-1	1/16	.047	.196	.093	.068
-2	3/32	.060	.313	.140	.095
-3	1/8	.080	.378	.185	.125
-4	5/32	.100	.395	.242	.154
-5	3/16	.120	.415	.262	.187
-6	1/4	.187	.447	.350	.250
-7	3/8	.250	.615	.465	.375



TUBE FITTINGS - Quick-Disconnect Luer Fittings

Quick-Disconnect Luer Fittings are available with locking or non-locking features.
 Locking fittings have been tested up to 125 P.S.I. without leakage.
 Non-locking connections can be made by simply pushing the male and female luer fittings together.
 Non-locking Luer Fittings are not recommended for high pressure or critical applications.

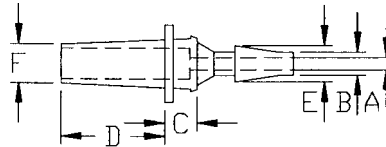
Available in the following materials:

Material Code No.	Material Name
-11	Polypropylene
-18	Nylon 6/6, (natural)
-46	Polycarbonate (other materials available)

MALE LUER for use with Locking Nut

Part No. O333 - (Size Code No.) - (Material Code No.)

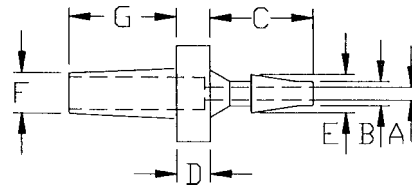
Size Code No.	Tubing I.D.	A	B	C	D	E	F
-1	1/16	.046	.068	.265	.410	.105	.155
-2	3/32	.060	.095	.350	.390	.145	.155
-3	1/8	.078	.125	.450	.380	.187	.155



MALE LUER (Locking Nut not Required)

Part No. O334 - (Size Code No.) - (Material Code No.)

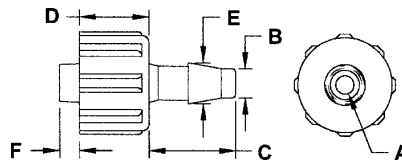
Size Code No.	Tubing I.D.	A	B	C	D	E	F	G
-1	1/16	.046	.068	.265	.130	.105	.155	.380
-2	3/32	.060	.095	.350	.130	.145	.155	.380
-3	1/8	.078	.125	.450	.130	.185	.155	.400
-4	5/32	.100	.150	.480	.130	.255	.155	.400
-5	3/16	.100	.187	.540	.130	.262	.155	.390
-6	1/4	.160	.256	.614	.158	.355	.155	.410



MALE LUER

Part No. O357 - (Size Code No.) - (Material Code No.)

Size Code No.	Tubing I.D.	A	B	C	D	E	F
-1	1/16	.046	.068	.265	.300	.105	.085
-2	3/32	.060	.095	.350	.300	.145	.085
-3	1/8	.078	.125	.375	.300	.175	.085
-4	3/16	.102	.188	.500	.300	.250	.085



TUBE FITTINGS - QUICK-DISCONNECT LUER FITTINGS (continued)

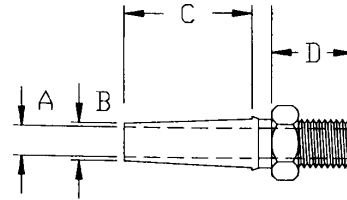
Available in the following materials:

Material Code No.	Material Name
-11	Polypropylene
-18	Nylon 6/6, (natural)
-46	Polycarbonate (other materials available)

MALE LUER FOR THREADED PORT

Part No. O340 - (Size Code No.) - (Material Code No.)

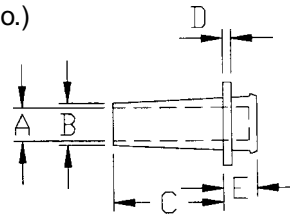
Size Code No.	Thread	A	B	C	D
-1	10-32 UNF	.100	.155	.380	.300
-2	1/4-28 UNF	.100	.155	.380	.350



MALE LUER PLUG

Part No. O338 - (Size Code No.) - (Material Code No.)

Size Code No.	A	B	C	D	E
-1	.100	.155	.380	.030	.100

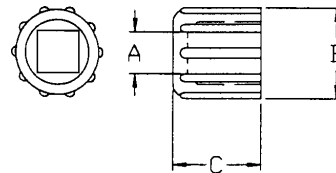


MALE LUER LOCKING NUT

Part No. O341 - (Size Code No.) - (Material Code No.)

Size Code No.	A	B	C
-1	.190	.440	.390

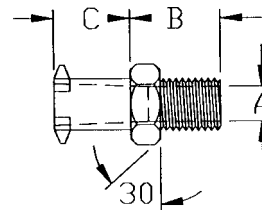
• For use with Part No. O333, Part No. O340, and Part No. O338



FEMALE LUER FOR THREADED PORT

Part No. O337 - (Size Code No.) - (Material Code No.)

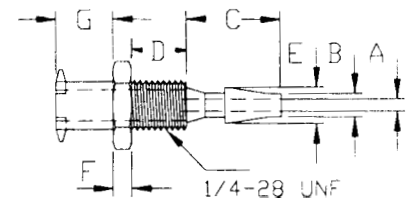
Size Code No.	Tubing I.D.	A	B	C
-1	10-32 UNF	.078	.260	.250
-2	1/4-28 UNF	.100	.350	.250



FEMALE LUER FOR BULKHEAD MOUNTING

Part No. O335 - (Size Code No.) - (Material Code No.)

Size Code No.	Tubing I.D.	A	B	C	D	E	F	G
-1	1/16	.046	.068	.265	.250	.105	.100	.250
-2	3/32	.060	.095	.350	.250	.145	.100	.250
-3	1/8	.078	.125	.450	.250	.187	.100	.250



TUBE FITTINGS - QUICK-DISCONNECT LUER FITTINGS (continued)

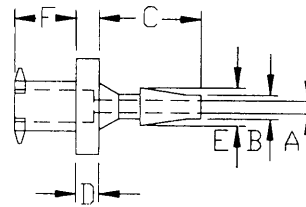
Available in the following materials:

Material Code No.	Material Name
-11	Polypropylene
-18	Nylon 6/6, (natural)
-46	Polycarbonate (other materials available)

FEMALE LUER

Part No. O336 - (Size Code No.) - (Material Code No.)

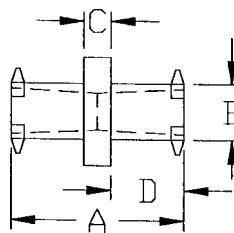
Size Code No.	Tubing I.D.	A	B	C	D	E	F
-1	1/16	.046	.068	.265	.100	.105	.250
-2	3/32	.060	.095	.350	.100	.145	.250
-3	1/8	.078	.125	.450	.100	.183	.250
-4	5/32	.100	.156	.480	.100	.232	.250
-5	3/16	.125	.187	.625	.125	.281	.250



FEMALE LUER CONNECTOR

Part No. O347 - (Size Code No.) - (Material Code No.)

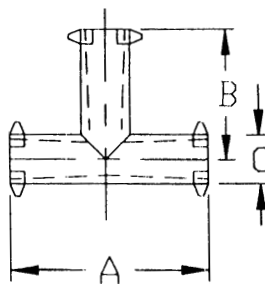
Size Code No.	A	B	C	D
-1	.631	.230	.127	.245



FEMALE LUER TEE

Part No. O348 - (Size Code No.) - (Material Code No.)

Size Code No.	A	B	C
-1	.940	.476	.230



FEMALE LUER PLUG

Part No. O339 - (Size Code No.) - (Material Code No.)

Size Code No.	A	B
-1	.250	.100

