

BUSHINGS FOR ELECTRICAL APPLICATIONS

SNUB BUSHINGS

Available Material: Nylon 6/6

Color: Black

Underwriters' Laboratories File #E-15331

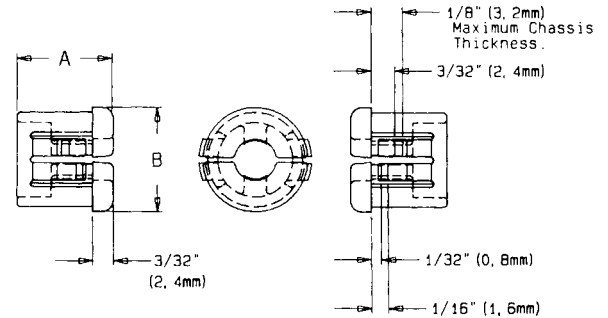
Canadian Standards Association File #LR-8919

Flammability: 94V-2.

Temperature index: 125°C.

Maximum temperature on the part should not exceed 105°C.

Suitable for 1/8" (3,2mm) to 1/4" (6,4mm) diameter cable, tubing or hose.



Part No. CN114 - (Size Code No.)

Size Code No.	Approximate Cable Dia.		Mounting Hole Dia.		UL/CSA Description	B Head Dia.		A Overall Height	
	in.	mm	in.	mm		in.	mm	in.	mm
-1	1/8	3.2	.375	9,5	K 375-125	15/32	11,7	27/64	10,7
-2	3/16	4,8	.437	11,1	K 437-187	15/32	11,9	7/16	11,2
-3	1/4	6,3	.500	12,7	K 500-250	9/16	14,2	7/16	11,2

OPEN/CLOSED BUSHINGS

Available Material: Nylon 6/6

Color: Black

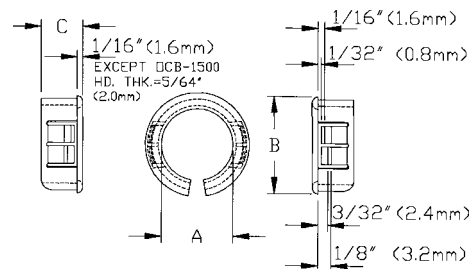
Underwriters' Laboratories File #E-15331

Canadian Standards Association File #LR-8919

Flammability: 94V-2.

Temperature index: 125°C.

Maximum temperature on the part should not exceed 105°C.



Part No. CN115 - (Size Code No.)

Size Code No.	CHASSIS DIMENSIONS				UL/CSA Description	PART DIMENSIONS					
	Maximum Thickness		Mounting Hole Dia.			A Inside Dia.		B Head Dia.		C Overall Hgt.	
	In.	mm	In.	mm		In.	mm	In.	mm	In.	mm
-1			.375	9,5	OCB-375	17/64	6,7	27/64	10,7	25/64	9,9
-2			.437	11,1	OCB-437	5/16	7,9	31/64	12,3		
-3			.500	12,7	OCB-500	5/16	7,9	9/16	14,3		
-4			.562	14,3	OCB-562	25/64	9,9	41/64	16,3		
-5			.625	15,9	OCB-625	29/64	11,5	11/16	17,5		
-6	.125	3,2	.750	19,0	OCB-750	35/64	13,9	51/64	20,2	13/32	10,3
-7			.875	22,2	OCB-875	43/64	17,0	59/64	23,4		
-8			1.000	25,4	OCB-1000	13/16	20,6	1-1/16	27,0		
-9			1.093	27,8	OCB-1093	7/8	22,0	1-1/8	28,6		
-10			1.250	31,8	OCB-1250	1-3/64	26,6	1-11/32	34,1		
-11			1.375	34,9	OCB-1375	1-11/64	29,7	1-15/32	37,3		
-12			1.500	38,1	OCB-1500	1-1/4	31,7	1-37/64	40,1	27/64	10,7

BUSHINGS FOR ELECTRICAL APPLICATIONS (continued)

SNAP BUSHINGS

Available Material: Nylon 6/6

Color: Black or White

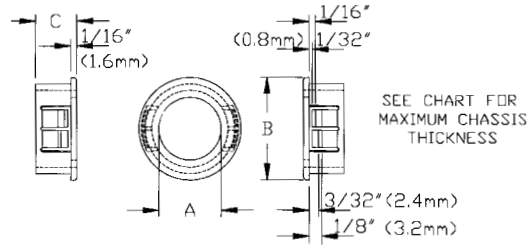
Underwriters' Laboratories File #E-15331

Canadian Standards Association File #LR-8919

Flammability: 94V-2.

Temperature index: 125°C.

Maximum temperature on the part should not exceed 105°C.



Part No. CN116 - (Size Code No.)

Size Code No. Black White	CHASSIS DIMENSIONS				UL/CSA Description	PART DIMENSIONS						
	Maximum Thickness		Mounting Hole Dia.			A Inside Dia.		B Head Dia.		C Overall Hgt.		
	In.	m m	In.	m m		In.	m m	In.	m m	In.	m m	
-1 -2	.040	1,0	.250	6,4	SB 250-040	1/8	3,2	5/16	7,9	5/16	7,9	
-3 -4	.062	1,6	.250	6,4	SB 250-2							
-5 -6			.312	7,9	SB 312-3	3/16	4,8	3/8	9,5			
-7 -8	.125	3,2	.375	9,5	SB 375-3	3/16	4,8	15/32	11,9	13/32	10,3	
-9 -10					SB 375-4	1/4	6,4					
-11 -12	.172	4,4			SB 375-281	9/32	7,1					
-13 -14			.437	11,1	SB 437-4	.270	6,8	17/32	13,5			
-15 -16					SB 437-5	5/16	7,9					
-17 -18					SB 437-243	.243*	6,2					
-19 -20	.125	3,2	.500	12,7	SB 500-4	1/4	6,4	37/64	14,7			
-21 -22					SB 500-5	5/16	7,9					
-23 -24					SB 500-6	3/8	9,5					
-25 -26			.562	14,3	SB 562-5	5/16	7,9	21/32	16,7			
-27 -28					SB 562-6	3/8	9,5					
-29 -30					SB 562-7	7/16	11,1					
-31 -32			.625	15,9	SB 625-4	1/4	6,4	23/32	18,2			
-33 -34					SB 625-7	7/16	11,1					
-35 -36					SB 625-8	1/2	12,7					
-37 -38	.280	7,1	.625	15,9	SB 625-500	.500*	12,7	45/64	17,9	17/32	13,5	
-39 -40	.125	3,2	.687	17,4	SB 687-8	1/2	12,7	25/32	19,8	13/32	10,3	
-41 -42					SB 687-9	9/16	14,3					
-43 -44					.750	19,1	SB 750-6					25/64
-45 -46	SB 750-8	1/2	12,7									
-47 -48	SB 750-9	9/16	14,3									
-49 -50	SB 750-10	39/64	15,5									
-51 -52	.250	6,4			SB 750-625	.625*	15,9	53/64	21,0	17/32	13,5	
-53 -54			.812	20,6	SB 812-9	9/16	14,3	57/64	22,6	13/32	10,3	
-55 -56					SB 812-10	5/8	15,9					
-57 -58	.125	3,2	.875	22,2	SB 875-6	3/8	9,5	61/64	24,2	29/64	11,5	
-59 -60					SB 875-7	7/16	11,1					
-61 -62					SB 875-8	1/2	12,7					
-63 -64					SB 875-9	9/16	14,3					
-65 -66					SB 875-10	5/8	15,9					
-67 -68					SB 875-11	11/16	17,5					
-69 -70			1.000	25,4	SB 1000-12	3/4	19,1	1-1/8	28,6			
-71 -72			1.093	27,8	SB 1093-13	13/16	20,6	1-7/32	30,9			
-73 -74					SB 1093-14	7/8	22,2					
-75 -76					SB 1093-15	15/16	23,8					

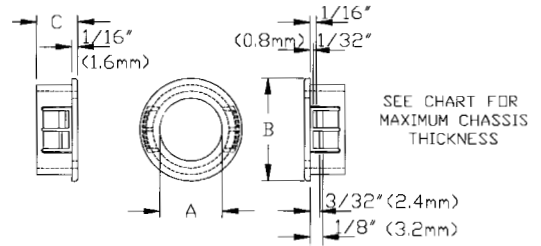
* +.015-.000

BUSHINGS FOR ELECTRICAL APPLICATIONS (continued)

SNAP BUSHINGS (continued)

Available Material: Nylon 6/6
Color: Black or White

Underwriters' Laboratories File #E-15331
Canadian Standards Association File #LR-8919
Flammability: 94V-2.
Temperature index: 125°C.
Maximum temperature on the part should not exceed 105°C.



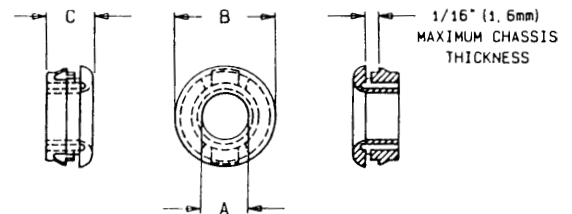
Part No. CN116 - (Size Code No.)

Size Code No. Black White	CHASSIS DIMENSIONS		UL/CSA Description	PART DIMENSIONS								
	Maximum Thickness In. mm	Mounting Hole Dia. In. mm		A Inside Dia. In. mm		B Head Dia. In. mm		C Overall Hgt. In. mm				
-79 -80	.125 3,2	30,2	SB 1187-15	15/16	23,8	1-5/16	33,3	29/64 11,5				
-81 -82			SB 1250-15	15/16	23,8	1-23/64	34,5					
-83 -84			SB 1250-16	1	25,4	1-19/64	33,2					
-85 -86			SB 1375-14	7/8	22,2	1-15/32	37,3					
-87 -88			SB 1375-16	1	25,4							
-89 -90			1.500 38,1	38,1	SB 1500-17	1-1/16	27,0			1-39/64 40,9		
-91 -92					SB 1500-18	1-1/8	28,6					
-93 -94	SB 1500-21	1-5/16			33,3							
-95 -96	1.750 44,5	44,5	SB 1750-22	1-3/8	34,9	1-7/8	47,6					
-97 -98			SB 2000-26	2.000 50,8	1-41/64	41,6	2-1/8			54,0		
-970 -					SB 2000-28	1-3/4	44,5			2-1/8	54,0	
-99 -100	.250 6,4	6,4	SB 2.25-29	1-55/64	47,1	2-31/64	63,1	23/32 18,3				
-101 -102			SB 2.5-31	1-31/32	50,0	2-21/32	67,5					
-103 -104			SB 3.5-39	2-15/32	62,7	3-5/32	80,2					
-105 -106			SB 3.5-47	2-15/16	74,7	3-21/32	93,0					
-107 -108			SB 4.0-55	3-7/16	88,4	4-11/64	105,9					

DOUBLE INSULATED BUSHINGS

Available Material: Nylon 6/6
Color: Black or White

Underwriters' Laboratories File #E-15331
Canadian Standards Association File #LR-8919
Flammability: 94V-2.
Temperature index: 125°C.
Maximum temperature on the part should not exceed 105°C.



Part No. CN119 - (Size Code No.)

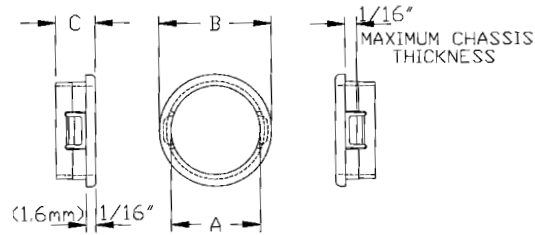
Size Code No. Black White	CHASSIS DIMENSIONS		UL/CSA Description	PART DIMENSIONS					
	Maximum Thickness In. mm	Mounting Hole Dia. In. mm		A Inside Dia. in. mm		B Head Dia. in. mm		C Overall Hgt. in. mm	
-1 -2	.062 1,6	.500 12,7	S 50	1/4	6,4	9/16	14,3	.265	6,7
-3 -4	.062 1,6	.875 22,2	S87	33/64	13,2	63/64	24,9	.320	8,1
-5 -6	.125 3,2	.875 22,2	S875-562	9/16	14,3	63/64	24,9	.520	13,1

BUSHINGS FOR ELECTRICAL APPLICATIONS (continued)

SHORTY BUSHINGS

Available Material: Nylon 6/6
Color: Black or White

Underwriters' Laboratories File #E-15331
Canadian Standards Association File #LR-8919
Flammability: 94V-2.
Temperature index: 125°C.
Maximum temperature on the part should not exceed 105°C.



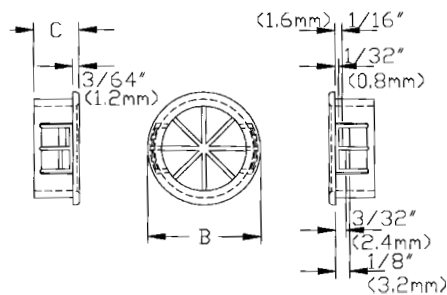
Part No. CN118 - (Size Code No.)

Size Code No. Black White	CHASSIS DIMENSIONS		UL/CSA Description	PART DIMENSIONS											
	Maximum Thickness In. m m	Mounting Hole Dia. In. m m		A Inside Dia. In. m m		B Head Dia. In. m m		C Overall Hgt. In. m m							
-1 -2	.062 1,6	.187 4,7	B 187-125	.125	3,2	1/4	6,4	15/64	5,9						
-3 -4				.218	5,5	B 218-125	.125			3,2	9/32	7,1			
-5 -6				.281	7,1	B 281-218	.218			5,5	11/32	8,7			
-7 -8				.312	7,9	B 312-250	.250			6,3	3/8	9,5			
-9 -10				.062 1,6	.343 8,7	B 343-218	.218	5,5	13/32	10,3	1/4	6,4			
-11 -12							.375	9,5	B 375-250	.250			6,3	7/16	11,1
-13 -14							.406	10,3	B 406-281	.281			7,1	15/32	11,9
-15 -16							.437	11,1	B 437-312	.312			7,9	1/2	12,7
-17 -18							.468	11,9	B 468-343	.343			8,6	17/32	13,5
-19 -20							.500	12,7	B 500-375	.375			9,5	9/16	14,3
-21 -22							.531	13,5	B 531-406	.406			10,3	19/32	15,1
-23 -24							.593	15,1	B 593-468	.468			11,9	21/32	16,7
-25 -26							.625	15,9	B 625-500	.500			12,7	45/64	17,9
-27 -28							.750	19,1	B 750-625	.625			15,9	53/64	21,0
-29 -30							.781	19,8	B 781-625	.625			15,9	55/64	21,8
-31 -32							.875	22,2	B 875-750	.750			19,0	15/16	23,8
-33 -34	1.000	25,4	B 1000-875				.879	22,3	1 1/16	27,0					

UNIVERSAL BUSHINGS

Available Material: Nylon 6/6
Color: Black

Underwriters' Laboratories File #E-15331
Canadian Standards Association File #LR-8919
Flammability: 94V-2.
Temperature index: 125°C.
Maximum temperature on the part should not exceed 105°C.



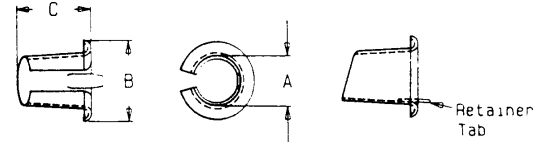
Part No. CN120 - (Size Code No.)

Size Code No.	CHASSIS DIMENSIONS		UL/CSA Description	PART DIMENSIONS													
	Maximum Thickness In. m m	Mounting Hole Dia. In. m m		A Inside Dia. In. m m		B Head Dia. In. m m		C Overall Hgt. In. m m									
-100	.125 3,2	.500 12,7	UB-500	5/16	7,6	.600	15,2	.385	9,8								
-1				.625	15,9	UB-625	7/16	11,1	23/32	18,3	13/32	10,3					
-2				.750	19,0	UB-750	1/2	12,7	55/64	21,8	25/64	9,9					
-3				.812	20,6	UB-812	1/2	12,7	57/64	22,6							
-4				.125 3,2	.875 22,2	UB-875	9/16	14,3	15/16	23,8	29/64	11,5					
-5							1.000	25,4	UB-1000	3/4			19,0	1-1/16	27,0		
-6							1.093	27,8	UB-1093	13/16			20,6	1-5/32	29,4		
-7							1.375	34,9	UB-1375	1			25,4	1-7/16	37,8		
-70							1.500	38,1	UB-1500	1 1/16			26,9	1-39/64	40,9	.450	11,4

ARMOR BUSHINGS

Available Material and Color: Polyethylene, Red

Underwriters' Laboratories File (Pending)
 Canadian Standards Association File #LR-24719
 Use with Flexible Armored Cable (BX) and Flexible
 Metallic Conduit (FMC) to insulate rough cut conduit ends.
 Temperature: Suitable as low as -40°F (-40°C).



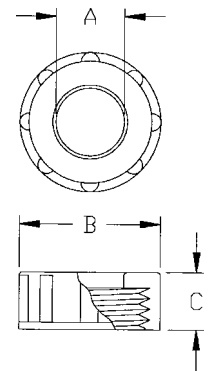
Part No. CN230 - (Size Code No.)

Size Code No.	Fits the Armored Cables below (AWG/Conductors)	UL/CSA Description	PART DIMENSIONS					
			A Inside Dia.		B Head Dia.		C Overall Hgt.	
			In.	m m	In.	m m	In.	m m
-1	14/2, 14/3, 12/2, 12/3	AB-0	.370	9,4	.680	17,3	.580	14,7
-3	14/4, 6/1, 4/1	AB-1	.440	11,2	.700	17,8	.630	16,0
-5	12/4, 10/2, 10/3, 2/1	AB-2	.570	14,0	.850	21,6	.640	16,3
-7	10/4, 8/2, 8/3, 1/1	AB-3	.730	18,5	1.020	25,9	.670	17,0

THREADED INSULATING BUSHINGS

Available Material: (see chart below)

Underwriters' Laboratories File #E-28430
 Canadian Standards Association File #LR-21831
 Flammability: 94V-2.
 Temperature index: 125°C.
 Maximum temperature on the part should not exceed 105°C.



Part No. CN231 - (Size Code No.)

Size Code No.	Trade Size NPT	UL/CSA Description	Material & Color	PART DIMENSIONS						
				A Inside Dia.		B Head Dia.		C Overall Hgt.		
				In.	m m	In.	m m	In.	m m	
-1	1/8	IB-1/8	*Nylon 6/6, black	.268	6,8	.530	13,4	.298	7,6	
-2	1/4	IB-1/4	*Phenolic, black	.348	8,8	.715	18,2	.366	9,3	
-3	3/8	IB-3/8	*Phenolic, black	.468	11,9	.875	22,2	.466	11,8	
-4	1/2	IB-1/2	Fire Retardant Polypropylene, gray	.600	15,2	1.060	26,9	.430	10,9	
-5	3/4	IB-3/4			.796	20,2	1.310	33,3		
-6	1	IS-1		1.010	25,7	1.590	40,4	.560	14,3	
-7	1 1/4	IS-1 1/4			1.325	33,7	1.960	49,8		
-8	1 1/2	IS-1 1/2			1.550	39,4	2.180	55,4		
-9	2	IS-2			2.000	50,8	2.680	68,1	.590	15,0

*Large quantities available in white.