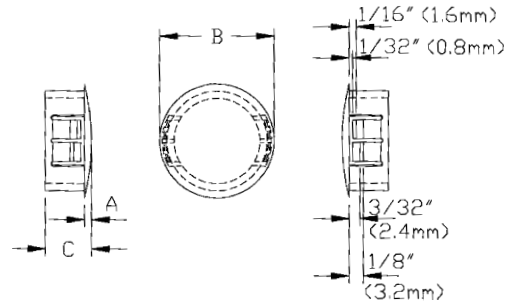


# PLUGS FOR ELECTRICAL APPLICATIONS

## DOMES PLUGS

Available Material: Nylon 6/6  
Color: Black and White

Underwriters' Laboratories File #E-15331  
Canadian Standards Association File #LR-8919  
Flammability: 94V-2.  
Temperature index: 125°C.



Part No. CN210 - (Size Code No.)

Size Code No.	Maximum Thickness		Mounting Hole Dia.		UL/CSA Description	B Head Dia.		C Overall Hgt.		A Head Thkness								
	Black	White	In.	m m		In.	m m	In.	m m	In.	m m							
-1	-2	.062	1,6	.187	4,7	DP-187**	1/4	6,4	15/64	5,9								
-3	-4			.250	6,4	DP-250	5/16	7,9	5/16	7,9								
-5	-6			.312	7,9	DP-312	3/8	9,5										
-7	-8	.125	3,2	.375	9,5	DP-375	15/32	11,9	13/32	10,3	1/16	1,6						
-9	-10			.437	11,1	DP-437	17/32	13,5										
-11	-12			.500	12,7	DP-500	37/64	14,7										
-13	-14			.562	14,3	DP-562	21/32	16,7										
-15	-16			.625	15,9	DP-625	23/32	18,2										
-17	-18			.687	17,4	DP-687	25/32	19,8										
-19	-20			.750	19,1	DP-750	59/64	23,4										
-21	-22			.812	20,6	DP-812	57/64	22,6										
-23	-24			1.093	27,8	.875	22,2	DP-875					1 1/64	25,8	29/64	11,5		
-25	-26					1.000	25,4	DP-1000					1 13/64	30,6				
-27	-28			1.125	28,6	totoDP-1093	1 7/32	30,9										
-29	-30	1.187	30,1	1.250	31,8	DP-1187	1 5/16	33,3	29/64	11,5								
-31	-32			1.250	31,8	DP-1250	1 3/8	34,9										
-33	-34			1.375	34,9	DP-1375	1 1/2	38,1										
-35	-36			1.500	38,1	DP-1500	1 43/64	42,4										
-37	-38			1.750	44,5	DP-1750	1 29/32	48,4										
-39	-40			2.000	50,8	DP-2000	2.170	55,1					15/32	11,92	.090	2,3		
-41	-42	.250	6,4	2.093	53,2	DP-2.093	2 11/32	59,5	.760	19,3	7/64	2,8						
-43	-44			2.250	57,2								DP-2.25	2.479	63,0			
-45	-46			2.500	63,5	DP-2.5	2 23/32	69,0	3/4	19,1								
-47	-48			3.000	76,2	DP-3.0	3 11/64	80,5										
-49	-50			3.375	85,7	DP-3.375	3 21/32	92,9	25/32	19,8			-	-				
-51	-52			3.500	88,9	DP-3.5	3 21/32	92,9										
-53	-54			4.000	101,6	DP-4.0	4 5/32	105,6										
-55	-56			5.000	127,0	DP-5.0	5 7/32	132,5										
-57	-58	6.000	152,4	DP-6.0	6 7/32	157,9												

\* Single panel thickness.

\*\*Convex, glossy finish head tapers to thin edge.

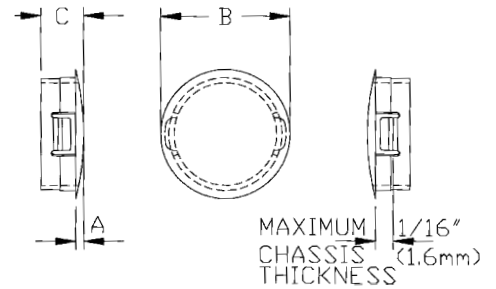
Approximate Head Thickness is .063" (1,6mm). Thickness may vary.

PLUGS FOR ELECTRICAL APPLICATIONS (continued)

### SHORTY PLUGS

Available Material: Nylon 6/6  
Color: Black and White

Flammability Classification: 94V-2.  
Material Temperature Index: 125°C - Maximum temperature on part not to exceed 105°C.



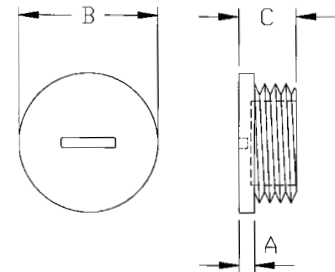
Part No. CN211 - (Size Code No.)

Size Code No.		Maximum Thickness		Mounting Hole Dia.		UL/CSA Description	A Head Thk.		B Head Dia.		C Overall Height	
Black	White	In.	m m	In.	m m		In.	m m	In.	m m	In.	m m
-1	-2			.218	5,5	SP-218			9/32	7,1		
-3	-4			.281	7,1	SP-281			11/32	8,7		
-5	-6			.312	7,9	SP-312			3/8	9,5		
-7	-8			.343	8,7	SP-343			13/32	10,3		
-9	-10			.375	9,5	SP-375			15/32	11,9		
-11	-12			.406	10,3	SP-406			15/32	11,9		
-13	-14			.437	11,1	SP-437			17/32	13,5		
-15	-16	.062	1,6	.468	11,9	SP-468	1/16	1,6	17/32	13,5	1/4	6,4
-17	-18			.500	12,7	SP-500			37/64	14,7		
-19	-20			.531	13,5	SP-531			19/32	15,1		
-21	-22			.593	15,1	SP-593			11/16	17,5		
-23	-24			.625	15,9	SP-625			23/32	18,3		
-25	-26			.750	19,0	SP-750			27/32	21,4		
-27	-28			.781	19,8	SP-781			57/64	22,6		
-29	-30			.875	22,2	SP-875			31/32	24,6		
-31	-32			1.000	25,4	SP-1000			13/64	30,5		

### THREADED PLUGS

Available Material: Glass-filled Nylon  
Color: Black

Steel conduit threads per DIN 40430  
Plugs conform to N-DIN 46320-FS/PA  
Working Temperatures: -4°F (20°C) to 158°F (70°C).



Part No. CN212 - (Size Code No.)

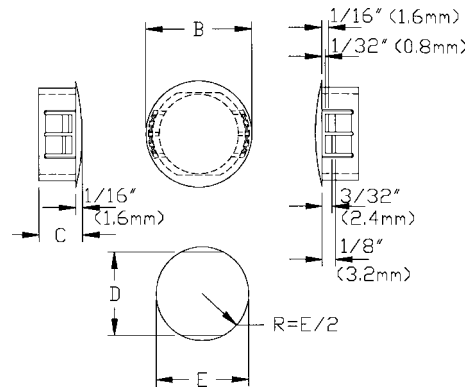
Size Code No.	Thread Type and Size	Description	PART DIMENSIONS						
			A Head Thk.		B Head Dia.		C Overall Hgt.		
Black	Gray		In.	m m	In.	m m	In.	m m	
-1	-2	PG 7	PGP 7	.079	2,0	19/32	15,1	.315	8,0
-3	-4	PG 9	PGP 9	.118	3,0	3/4	19,1	.354	9,0
-5	-6	PG 11	PGP 11			7/8	22,2		
-7	-8	PG 13	PGP 13	.138	3,5	63/64	25,0	.374	9,5
-9	-10	PG 16	PGP 16			1 1/16	27,0		
-11	-12	PG 21	PGP 21	.118	3,0	1.299	33,0	.431	11,0
-13	-14	PG 29	PGP 29	.157	4,0	1.732	44,0	.472	12,0

PLUGS FOR ELECTRICAL APPLICATIONS (continued)

**DOUBLE "D" PLUGS**

Available Material: Nylon 6/6  
Color: Black and White

Underwriters' Laboratories File #E-15331  
Canadian Standards Association File #LR-8919  
Flammability: 94V-2.  
Temperature index: 125°C.



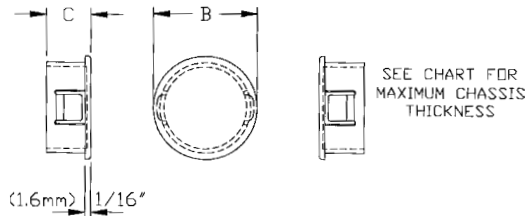
Part No. CN213 - (Size Code No.)

Size Code No. Black White	CHASSIS DIMENSIONS				Description	PART DIMENSIONS					
	Maximum Thickness		E Mounting Hole Dia.			D Prevent Rotation		A Head Thickness		B Head Diameter	
In. mm	In. mm	In. mm	In. mm	In. mm	In. mm	In. mm	In. mm	In. mm	In. mm	In. mm	In. mm
-1 -2	.125 3,2	.437 11,1	.390 9,9	DD-437-390	1/16 1,6	17/32 13,5	13/32 10,3				
-3 -4		.500 12,7	.445 11,3	DD-500-445		37/64 14,7					
-5 -6		.562 14,3	.530 13,5	DD-562-530		21/32 16,7					
-7 -8		.625 15,9	.550 14,0	DD-625-550		23/32 18,2					
-9 -10		.750 19,1	.625 15,9	DD-750-625		59/64 23,4					
-11 -12	.875 22,2	770 19,6	DD-875-770	1 1/64 25,8	29/64 11,5						

**PRY OUT PLUGS**

Available Material: Nylon 6/6  
Color: Black and White

Underwriters' Laboratories File #E-15331  
Canadian Standards Association File #LR-8919  
Flammability: 94V-2.  
Temperature Index: 125°C.



Part No. CN215 - (Size Code No.)

Size Code No. Black White	CHASSIS DIMENSIONS				UL/CSA Description	PART DIMENSIONS			
	Maximum Thickness		Mounting Hole Dia.			A Head Dia		C Overall Hgt.	
In. mm	In. mm	In. mm	In. mm	In. mm	In. mm	In. mm	In. mm		
-1 -2	.156 4,0	.250 6,4	POP-250	27/64 10,7	21/64 8,3				
-3 -4	.172 4,4	.312 7,9	POP-312	.575 14,6	13/32 10,3				
-5 -6		.375 9,5	POP-375	37/64 14,7					
-7 -8		.437 11,1	POP-437	39/64 15,5					
-9 -10		.500 12,7	POP-500	43/64 17,0					
-11 -12		.562 14,3	POP-562	47/64 18,6					
-13 -14		.625 15,9	POP-625	51/64 20,2					
-15 -16		.687 17,4	POP-687	57/64 22,6					
-17 -18		.750 19,1	POP-750	31/32 24,6					
-19 -20		.812 20,6	POP-812	1 1/32 26,2					
-21 -22		.875 22,2	POP-875	1 5/64 27,4					
-23 -24		1.000 25,4	POP-1000	1 7/32 30,9					
-25 -26		1.093 27,8	POP-1093	1 19/64 32,9					
-27 -28		1.187 30,1	POP-1187	1 13/32 35,7					
-29 -30		1.250 31,8	POP-1250	1 29/64 36,9					
-31 -32		1.375 34,9	POP-1375	1 37/64 40,1		.453 11,5			
-33 -34	.250 6,4	1.500 38,1	POP-1500	1 23/32 43,6					

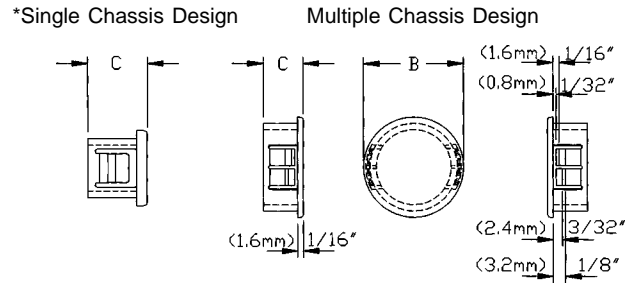
PLUGS FOR ELECTRICAL APPLICATIONS (continued)

## WINDOW PLUGS

Available Material: Polycarbonate (clear)

Flammability Classification: 94 HB.  
Temperature Index: 60°C.

Part No. CN214 - (Size Code No.)



Size Code No.	CHASSIS DIMENSIONS				Description	PART DIMENSIONS			
	Maximum Thickness		Mounting Hole Dia.			B Head Dia.		C Overall Hgt.	
	In.	m m	In.	m m	In.	m m	In.	m m	
-1*	.062	1,6	.187	4,7	WP-187	1/4	6,4	15/64	5,9
-2*			.250	6,4	WP-250	5/16	7,9	5/16	7,9
-3*			.312	7,9	WP-312	3/8	9,5		
-4	.125	3,2	.375	9,5	WP-375	15/32	11,9		
-5			.437	11,1	WP-437	17/32	13,5		
-6			.500	12,7	WP-500	37/64	14,7	13/32	10,3
-8			.625	15,9	WP-625	23/32	18,2		
-10			.750	19,1	WP-750	27/32	21,4		
-12			.875	22,2	WP-875	61/64	24,2	29/64	11,5
-13			1.000	25,4	WP-1000	1 1/8	28,6		
-14			2.000	50,8	WP-2000	2.157	54,8	.460	11,7

\*Single Chassis Design

## GLOSSY PLUGS

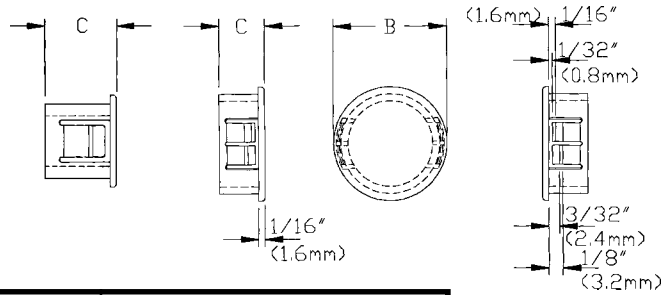
Available Material: Nylon 6/6  
Color: Black and White

Underwriters' Laboratories File #E-15331  
Canadian Standards Association File #LR-8919  
Flammability: 94V-2.  
Temperature Index: 125°C.

Part No. CN216 - (Size Code No.)

\*Single Chassis Design

Multiple Chassis Design



Size Code No. Black White	CHASSIS DIMENSIONS		Description	PART DIMENSIONS	
	Maximum Thickness In. mm	Mounting Hole Dia. In. mm		B Head Dia. In. mm	C Overall Hgt. In. mm
-1* -2* -3* -4*	.062 1,6	.250 6,4 .312 7,9	G-250 G-312	5/16 7,9 3/8 9,5	5/16 7,9
-5 -6 -7 -8 -9 -10 -90 -100 -13 -14 -17 -18	.125 3,2	.375 9,5 .437 11,1 .500 12,7 .562 14,3 .625 15,9 .750 19,1	G-375 G-437 G-500 G-562 G-625 G-750	15/32 11,9 17/32 13,5 37/64 14,7 21/32 16,7 23/32 18,2 27/32 21,4	13/32 10,3
-21 -22 -23 -24		.875 22,2 1.000 25,4	G-875 G-1000	61/64 24,2 1 1/8 28,6	29/64 11,5
-25 -26		1.093- 27,8- 1.125 28,6	G-1093	1 7/32 30,9	
-27 -28 -29 -30 -31 -32 -33 -34 -35 -36		1.187 30,1 1.250 34,9 1.500 38,1 1.750 44,4 2.000 50,8	G-1187 G-1250 G-1375 G-1750 G-2000	1 5/16 33,3 1 15/32 37,2 1 39/64 40,8 1 7/8 47,6 2 5/32 54,8	

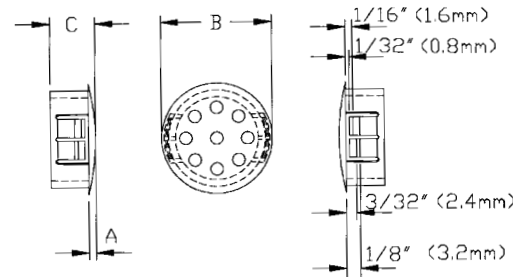
\*Single Chassis Design

PLUGS FOR ELECTRICAL APPLICATIONS (continued)

### VENT PLUGS

Available Material: Nylon 6/6  
Color: Black and White

Underwriters' Laboratories File #E-15331  
Canadian Standards Association File #LR-8919  
Flammability: 94V-2.  
Temperature index: 105°C.



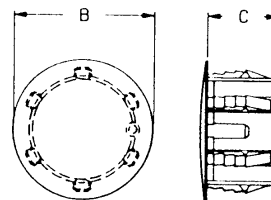
Part No. CN217 - (Size Code No.)

Size Code No. Black White	CHASSIS DIMENSIONS		Description	Number of Holes	PART DIMENSIONS					
	Maximum Thickness In. mm	Mounting Hole Dia. In. mm			B Head Dia. In. mm	C Overall Hgt. In. mm	A Head Thk. In. mm			
-1 -2 -5 -6 -9 -10	.125 3,2	.500 12,7 .625 15,8 .750 19,1	VP-500	4	37/64 14,7	3/32 10,3	1/16 1,6			
-13 -14 -15 -16			VP-625	5	47/64 18,7					
			VP-750	8	29/32 23,0					
			VP-875	9	1 1/64 25,8					
			VP-1000	9	1 13/64 30,6					
-17 -18			VP-1093	9	1 7/32 30,9					
-170 -180 -21 -22 -23 -24 -25 -26 -27 -28			1.093 27,8 to 1.125 28,6	VP-1187	10			1 5/16 33,3		
			VP-1250	10	1 3/8 34,9					
			VP-1375	11	1 1/2 38,1					
			VP-1500	13	1 43/64 42,4					
	VP-1750	13	1 29/32 48,4							
-29 -30	.250 6,4	2.000 50,8	VP-2000	19	2 9/64 54,4	15/32 11,9	5/64 2,0			
-33 -34 -35 -36 -37 -38 -39 -40			VP-2.5	19	2 23/32 69,0					
			VP-3.0	26	3 11/64 80,5					
			VP-3.5	38	3 21/32 92,9					
			VP-4.0	48	4 5/32 105,6					
					3/4 19,1	7/64 2,8				

### INSULATION PLUGS

Available Material: Nylon 6/6  
Color: Black and White

Flammability Classification: 94V-2.  
Temperature Index: 125°C.



Part No. CN218 - (Size Code No.)

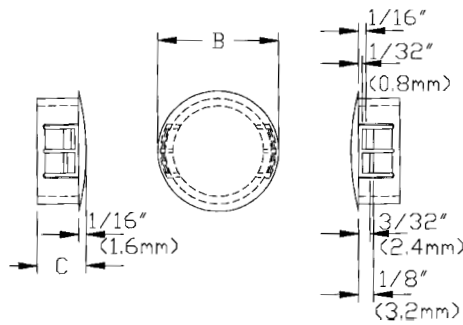
Size Code No. Black White	CHASSIS DIMENSIONS		Description	PART DIMENSIONS			
	Maximum Thickness In. mm	Mounting Hole Dia. In. mm		B Head Dia. In. mm	C Overall Hgt. In. mm		
-1 -2	No maximum.	1 25,4	IPW 1	1 47/64 31,4	11/16 17,5		

## KNOCK-OUT SEALS

Available Material: Nylon 6/6

Color: Gray

Underwriters' Laboratories File #E-15331  
 Canadian Standards Association File #LR-8919  
 Flammability: 94V-2.  
 Temperature index: 125°C.



Part No. CN219 - (Size Code No.)

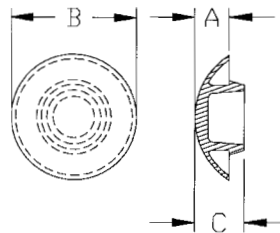
Size Code No.	CHASSIS DIMENSIONS				Trade Size	Description	PART DIMENSIONS			
	Maximum Thickness		Mounting Hole Dia.				B Head Dia.		C Overall Hgt.	
	In.	mm	In.	mm		In.	mm	In.	mm	
-1			.875	22,2	1/2	KOS 1/2	1 1/64	25,8		
-2			1.093	27,8	3/4	KOS 3/4	1 7/32	30,9		
-3	.125	3,2	1.375	34,9	1	KOS 1	1 1/2	38,1	29/64	11,5
-4			1.750	44,5	1 1/4	KOS 1 1/4	1 29/32	48,4		
-5			2.000	50,8	1 1/2	KOS 1 1/2	2 9/64	54,4		
-6	.250	6,4	2.500	63,5	2	KOS 2	2 3/4	69,9	3/4	19,1

## LIQUID TIGHT KNOCK-OUT SEALS

Available Material: Santoprene 251-80.

Color: Black

Underwriters' Laboratories File #E-28430  
 Canadian Standards Association File #LR-81067  
 Flammability: 94V-0.



Part No. CN220 - (Size Code No.)

Size Code No.	CHASSIS DIMENSIONS				Description	PART DIMENSIONS					
	Maximum Thickness		Mounting Hole Dia.			A Head Thk		B Head Dia.		C Overall Hgt.	
	In.	mm	In.	mm		In.	mm	In.	mm	In.	mm
-1			.875	22,2	KOS-LT 1/2	23/64	9,1	1 9/32	32,5	1/2	12,7
-3	.125	3,2	1.093	27,8	KOS-LT 3/4	25/64	9,9	1 17/32	38,9	35/64	13,9
-5			1.375	34,9	KOS-LT 1	27/64	10,7	1 51/64	45,6	9/16	14,3