

# PRODUCT PROTECTION CAPS and PLUGS

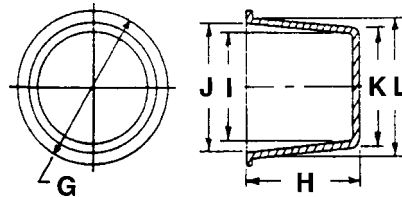
## TAPERED CAPS & PLUGS

*Tapered body provides firm friction fit when used as either cap or plug.  
Provides excellent protection against damage, dirt or moisture that occurs during manufacturing, storage or shipping. Recommended for all threaded (Unified and NPT) and non-threaded, internal and external fittings.*

**When used as Plug:** "L" dimension should be at least .020" larger than diameter to be plugged. Larger diameters may require more interference.

**When used as Cap:** "I" dimension should be at least .020" larger than diameter to be capped. Larger diameters may require more interference.

Material: Orange Low Density Polyethylene  
Meets MIL-C-5501/7



**Part No. TN101 - (Size Code No.)**

Size Code No.	N.P.T. Sizes		Unified Thread Sizes		Metric Thread Sizes		Dimensions (Inches)					
	Cap	Plug	Plug	Cap	Cap	Plug	G	H	I	J	K	L
-1	-	-	10/32	-	M2/M2.5	M5	5/16	13/32	.052	.117	.116	.181
-2	-	-	1/4	-	M3/3.5	M6	3/8	13/32	.110	.177	.174	.241
-3	-	-	-	-	M4	-	29/64	11/32	.146	.211	.210	.275
-4	-	-	-	-	M4.5	M7	3/8	11/32	.150	.210	.209	.269
-5	-	-	5/16	-	M5	M8 x 1	15/32	3/8	.175	.239	.239	.303
-6	-	-	-	-	M6	-	15/32	13/32	.205	.273	.267	.335
-7	-	-	3/8	5/16	M7	M10 x 1.25	1/2	13/32	.235	.303	.299	.367
-8	-	1/8	-	-	-	-	9/16	3/8	.267	.333	.331	.397
-9	-	-	7/16	-	M8 x 1	M12	9/16	13/32	.298	.364	.362	.428
-11	-	-	-	3/8	-	M12 x 1.25	19/32	13/32	.328	.395	.392	.459
-12	1/8	1/4	1/2	-	M10 x 1.25	M14	5/8	13/32	.358	.422	.422	.486
-13	-	-	-	7/16	-	M14 x 1.5	21/32	13/32	.384	.448	.448	.512
-14	-	-	9/16	1/2	-	-	11/16	5/16	.415	.485	.477	.547
-15	-	-	9/16	1/2	-	-	11/16	15/32	.408	.484	.472	.548
-16	-	-	-	-	M12 x 1.25	M16	23/32	15/32	.436	.504	.500	.568
-17	1/4	-	5/8	-	-	-	3/4	15/32	.469	.544	.533	.608
-18	-	-	-	-	-	-	3/4	11/32	.490	.550	.552	.612
-19	-	3/8	-	9/16	-	M18	25/32	1/2	.487	.569	.551	.633
-20	-	-	-	5/8	M14 x 1.5	M18 x 1.5	27/32	17/32	.518	.606	.580	.668
-21	-	-	-	-	-	-	27/32	17/32	.549	.634	.610	.695
-22	-	-	3/4	-	-	M20	7/8	1/2	.578	.665	.642	.729
-23	3/8	-	-	-	M16 x 1.5	M20 X 1.5	7/8	17/32	.614	.691	.678	.755
-24	-	1/2	-	-	-	M22	15/16	19/32	.627	.723	.691	.787
-25	-	-	-	-	-	-	55/64	3/16	.688	.743	.750	.805
-26	-	-	-	3/4	-	M22 x 1.5	1	19/32	.663	.761	.727	.825
-27	-	-	7/8	-	M18 x 1.5	M24	1	19/32	.688	.785	.752	.849
-28	1/2	-	15/16	-	-	M24 x 2	1 1/16	21/32	.739	.848	.803	.912
-29	-	-	1	7/8	M20 x 1.5	-	1 1/8	5/8	.755	.869	.819	.933
-30	-	3/4	-	-	-	-	1 1/8	21/32	.790	.894	.854	.958
-31	-	3/4	-	-	-	M27	1 1/8	3/4	.805	.909	.869	.973-

(continued next page)

Part No. TN101 - (Size Code No.)

Size Code No.	N.P.T. Sizes		Unified Thread Sizes		Metric Thread Sizes		Dimensions (Inches)					
	Cap	Plug	Plug	Cap	Cap	Plug	G	H	I	J	K	L
-32	-	3/4	-	-	-	-	1 1/8	21/32	.805	.909	.869	.973
-33	-	-	-	-	-	-	1 5/32	1/2	.895	.980	.955	1.040
-34	-	-	1 1/16	-	M22.5 x 1.5	M27 x 2	1 5/32	23/32	.855	.980	.915	1.040
-35	-	-	-	-	-	-	1 5/16	7/8	.940	.960	1.020	1.040
-36	-	-	-	-	-	-	1 1/4	1/2	.916	.985	.980	1.049
-37	-	-	-	-	-	-	1 1/4	1 1/32	.890	1.030	.950	1.090
-38	3/4	-	-	-	M24 x 2	-	1 9/32	3/4	.903	1.028	.967	1.092
-39	-	-	-	-	-	-	1 7/16	3/4	.918	1.047	.975	1.104
-40	-	-	-	1 1/16	-	M30 x 2	1 5/16	25/32	.933	1.080	.997	1.144
-41	1	1 1/4	-	-	M27 x 2	M33	1 13/32	25/32	1.029	1.155	1.093	1.219
-42	-	-	-	-	-	-	1 7/16	21/32	1.113	1.222	1.175	1.284
-43	-	-	-	-	-	-	1 43/64	21/32	1.113	1.222	1.175	1.284
-44	-	-	1 5/16	-	-	M33 x 2	1 7/16	3/4	1.115	1.222	1.179	1.286
-45	-	-	-	-	-	-	1 3/8	9/16	1.155	1.190	1.276	1.312
-46	-	-	-	-	M30 x 2	-	1 1/2	3/4	1.162	1.290	1.226	1.354
-47	1	-	-	1 5/16	-	M36 x 3	1 1/2	27/32	1.175	1.300	1.233	1.358
-48	-	-	-	-	-	-	1 1/2	3/4	1.231	1.295	1.292	1.356
-49	-	-	1 1/2	-	-	-	1 5/8	17/32	1.286	1.401	1.350	1.465
-50	-	-	-	-	M33 x 2	M39 x 3	1 5/8	3/4	1.248	1.401	1.312	1.465
-51	-	-	-	-	-	-	1 3/4	51/64	1.340	1.420	1.435	1.500
-52	-	-	-	-	-	-	1 49/64	15/16	1.282	1.450	1.344	1.507
-53	-	-	1 9/16	-	-	-	1 3/4	7/8	1.384	1.537	1.447	1.600
-54	-	1 1/4	-	-	M36 x 3	-	1 3/4	3/4	1.387	1.537	1.451	1.601
-55	-	-	1 5/8	-	-	-	1 25/32	3/4	1.455	1.538	1.519	1.602
-56	1 1/4	-	-	1 5/8	M39 x 3	-	1 7/8	25/32	1.498	1.620	1.560	1.682
-57	1 1/4	-	-	1 5/8	-	-	1 7/8	5/8	1.514	1.628	1.574	1.688
-58	-	-	-	-	-	-	1 15/16	3/4	1.569	1.686	1.633	1.750
-59	-	1 1/2	1 7/8	-	-	-	2 1/32	3/4	1.664	1.794	1.720	1.850
-60	-	1 1/2	1 7/8	-	-	-	2	25/32	1.688	1.818	1.752	1.882
-61	1 1/2	-	-	1 7/8	-	-	2 5/32	1	1.743	1.874	1.807	1.938
-62	-	-	-	-	-	-	2 3/8	43/64	1.785	1.895	1.865	1.975
-63	-	-	-	-	-	-	2 1/8	1	1.783	1.936	1.847	2.000
-65	-	-	-	-	-	-	2 13/64	3/4	1.885	2.000	1.950	2.065
-66	-	-	-	-	-	-	2 1/4	1	1.839	2.014	1.903	2.078
-67	-	-	-	-	-	-	2 1/4	1	1.917	2.069	1.981	2.133
-68	-	-	-	-	-	-	2 19/32	3/8	2.060	2.140	2.020	2.100
-69	-	-	-	-	-	-	2 5/16	3/4	1.953	2.083	2.017	2.147
-70	-	-	2 1/4	-	-	-	2 7/16	1 1/32	2.000	2.174	2.070	2.244
-71	-	-	-	2 1/4	-	-	2 9/16	1	2.074	2.250	2.136	2.312
-72	-	-	-	-	-	-	2 51/64	3/4	2.216	2.336	2.280	2.400
-73	-	-	-	-	-	-	2 17/32	1 1/32	2.065	2.344	2.129	2.408
-74	2	-	-	-	-	-	2 5/8	1	2.236	2.400	2.300	2.464
-75	-	-	-	-	-	-	2 21/32	3/4	2.220	2.383	2.300	2.464
-76	-	-	-	2 1/2	-	-	2 13/16	1 5/32	2.332	2.540	2.396	2.604
-77	-	-	-	-	-	-	2 25/32	21/32	2.418	2.581	2.482	2.645
-78	-	-	-	-	-	-	2 25/32	1	2.247	2.586	2.311	2.650
-79	-	-	-	-	-	-	2 7/8	3/4	2.497	2.626	2.561	2.690
-80	-	-	-	-	-	-	2 7/8	1	2.395	2.688	2.457	2.750
-81	-	2 1/2	-	-	-	-	2 31/32	25/32	2.579	2.728	2.641	2.790

CAPS and PLUGS (continued)

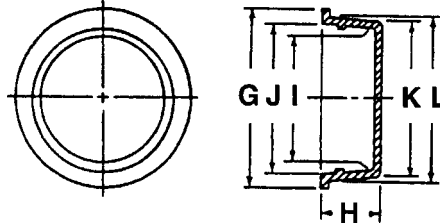
## EXTRA LARGE TAPERED CAPS & PLUGS

*Tapered body provides firm friction fit when used as either cap or plug. Provides excellent protection against damage, dirt or moisture that occurs during manufacturing, storage or shipping. Recommended for all threaded (Unified and NPT) and non-threaded internal and external fittings.*

**When used as Plug:** "L" dimension should be at least .020" larger than diameter to be plugged. Larger diameters may require more interference.

**When used as Cap:** "I" dimension should be at least .020" larger than diameter to be capped. Larger diameters may require more interference.

Material: Orange Low Density Polyethylene  
Meets MIL-C-5501/7



**Part No. TN100 - (Size Code No.)**

Size Code No.	N.P.T. Sizes		Unified Thread Sizes		Dimensions (Inches)					
	Cap	Plug	Plug	Cap	G	H	I	J	K	L
-82	-	-	-	-	2 31/32	1/2	2.595	2.728	2.655	2.788
-1	-	-	-	-	3 1/16	23/32	2.626	2.790	2.706	2.870
-2	-	-	3	-	3 1/4	3/4	2.786	2.918	2.850	2.982
-3	2 1/2	M75, M76	-	-	3 1/8	1	2.656	2.926	2.720	2.990
-4	-	-	-	-	3 11/32	3/4	2.915	3.041	2.975	3.103
-5	-	-	-	-	3 13/32	.470	2.916	3.079	2.996	3.159
-6	-	-	-	-	3 3/8	1	2.910	3.174	2.980	3.244
-7	-	-	-	-	3 1/2	1	3.018	3.297	3.088	3.367
-8	-	3	-	-	3 5/8	3/4	3.250	3.382	3.320	3.452
-9	3	-	-	-	3 11/16	1 1/8	3.200	3.492	3.270	3.562
-10	-	-	-	-	3.888	3/4	3.406	3.542	3.466	3.602
-11	-	-	-	-	4	1	3.478	3.658	3.552	3.732
-12	-	-	-	-	4	3/4	3.596	3.722	3.676	3.802
-13	-	3 1/2	-	-	4 1/8	3/4	3.710	3.840	3.790	3.920
-14	3 1/2	-	-	-	4 3/8	3/4	3.848	3.994	3.928	4.074
-15	-	-	-	-	4 17/32	3/4	3.940	4.060	4.020	4.140
-16	-	4	-	-	4 15/16	1	4.134	4.379	4.214	4.459
-17	4	-	-	-	5	1	4.288	4.542	4.368	4.622
-18	-	-	-	-	5 1/4	7/8	4.568	4.782	4.638	4.852
-19	-	-	-	-	5 7/16	11/16	4.900	5.020	4.980	5.100
-20	-	5	-	-	5 7/8	7/8	5.217	5.385	5.326	5.494
-21	5	-	-	-	6 1/8	1	5.390	5.540	5.470	5.620
-22	-	-	-	-	6 1/4	1	5.606	5.784	5.696	5.874
-23	-	-	-	-	6 5/8	1	5.918	6.094	6.008	6.184
-24	-	6	-	-	6 15/16	7/8	6.329	6.500	6.398	6.564
-25	6	-	-	-	7 3/16	1 1/2	6.562	6.668	6.668	6.774
-26	-	-	-	-	7.620	1	6.961	7.038	7.048	7.124
-27	-	-	-	-	7 15/16	1	7.253	7.575	7.338	7.656
-28	-	-	-	-	8.120	1	7.574	7.762	7.658	7.846
-29	-	-	-	-	8 3/8	1	7.877	8.120	7.968	8.146
-30	-	-	-	-	9 1/8	1 1/2	8.558	8.622	8.668	8.732
-31	-	-	-	-	10.560	31/32	9.820	10.080	9.970	10.220

## WIDE-FLANGE TAPERED CAPS & PLUGS

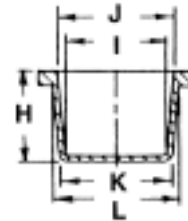
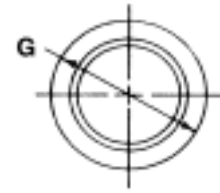
Engineered with a wider and thicker flange design for added protection and security.

This part can be used as a cap or plug.

**When used as Plug:** "L" dimension should be at least .020" larger than diameter to be plugged. Larger diameters may require more interference.

**When used as Cap:** "I" dimension should be at least .020" larger than diameter to be capped. Larger diameters may require more interference.

Material: Yellow Low Density Polyethylene  
Meets NAS 816

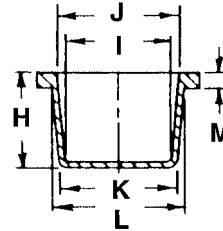
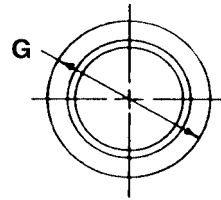


Part No. TN102- (Size Code No.)

Size Code No.	N.P.T. Sizes		Unified Thread Sizes		Metric Thread Sizes		Dimensions (Inches)					
	Cap	Plug	Plug	Cap	Cap	Plug	G	H	I	J	K	L
-1	-	-	-	-	-	-	.500	.470	.053	.133	.116	.182
-2	-	-	-	-	M4	M6	.560	.470	.112	.188	.174	.240
-3	-	-	-	-	-	-	.630	.400	.174	.245	.236	.296
-4	-	-	3/8	15/16	-	-	.690	.400	.235	.312	.300	.365
-5	1/8	-	-	-	M8	M10	.720	.400	.270	.338	.334	.392
-6	-	-	7/16	-	-	-	.750	.400	.298	.356	.368	.418
-7	1/8	-	-	3/8	M10	M12	.780	.400	.329	.387	.397	.447
-8	1/8	1/4	1/2	-	-	-	.810	.400	.357	.415	.427	.475
-9	-	-	-	-	-	-	.830	.470	.365	.450	.435	.509
-10	-	-	-	7/16	-	M14	.750	.380	.396	.444	.460	.500
-11	-	-	9/16	1/2	M12	-	.880	.470	.409	.484	.481	.547
-12	1/4	-	5/8	-	-	M16	.940	.470	.466	.567	.530	.616
-13	-	3/8	-	9/16	M14	-	.970	.470	.497	.579	.560	.631
-14	-	-	-	5/8	M16	M18	1.000	.530	.519	.605	.590	.667
-15	-	-	-	-	-	-	1.030	.530	.548	.634	.610	.687
-16	-	-	3/4	-	-	M18, M20	1.060	.530	.558	.667	.628	.725
-17	3/8	-	-	-	-	M20	1.090	.530	.588	.691	.658	.750
-18	-	1/2	-	-	M18	-	1.130	.560	.620	.718	.690	.776
-19	-	-	-	3/4	-	M22	1.160	.600	.663	.759	.725	.812
-20	-	-	-	-	-	-	1.190	.590	.693	.820	.756	.870
-21	-	-	-	7/8	-	-	1.250	.620	.755	.876	.820	.930
-22	-	-	-	-	-	-	1.250	.650	.763	.877	.825	.929
-23	-	3/4	-	-	M22	-	1.281	.650	.804	.925	.866	.976
-24	5/8	3/4	1 1/16	-	M24	M26, M27	1.340	.720	.840	.972	.915	1.035
-25	-	-	-	-	-	-	1.440	.750	.920	1.040	.984	1.106
-26	-	7/8	-	-	M27, M28	M25	1.560	.750	1.080	1.220	1.150	1.284
-27	7/8	1	1 5/16	-	M30	M32, M33	1.560	.750	1.115	1.260	1.180	1.314
-28	-	-	-	-	M32, M33	M35, M36	1.690	.750	1.166	1.324	1.236	1.382
-29	-	-	-	-	-	-	1.840	.930	1.248	1.417	1.312	1.465
-30	-	-	-	-	-	-	1.840	.780	1.249	1.427	1.312	1.466

(continued next page)

CAPS and PLUGS (continued)



## WIDE-FLANGE TAPERED CAPS & PLUGS

Continued From Page 267

Part No. TN102- (Size Code No.)

Size Code No.	N.P.T. Sizes		Unified Thread Sizes		Metric Thread Sizes		Dimensions (Inches)					
	Cap	Plug	Plug	Cap	Cap	Plug	G	H	I	J	K	L
-31	-	-	-	-	-	-	1.750	.810	1.351	1.452	1.420	1.510
-32	-	-	-	-	-	-	1.940	.750	1.378	1.552	1.452	1.604
-33	-	1/4	-	1 1/8	M38	M39, M40, M42	2.060	.750	1.516	1.649	1.580	1.714
-34	-	1 1/2	1 7/8	-	M45	M48	2.310	.750	1.650	1.828	1.730	1.888
-35	1 1/2	-	-	1 7/8	-	M48	2.380	.750	1.731	1.9165	1.810	1.975
-36	-	-	-	-	-	-	2.340	.570	1.780	1.870	1.900	1.990
-37	1 1/2	-	-	-	-	-	2.440	1.120	1.788	1.973	1.850	2.020
-38	-	-	-	-	-	-	2.380	.750	1.857	2.005	1.927	2.058
-39	1 3/4	-	2 1/4	-	M52	M55, M56	2.690	1.120	2.005	2.197	2.067	2.243
-390	-	-	-	-	-	-	2.690	1.120	2.010	2.218	2.072	2.263
-40	-	2	-	2 1/4	M58	M58, M60	2.750	1.120	2.074	2.266	2.136	2.312
-41	2	-	-	-	M60	M60, M62	2.880	1.120	2.235	2.416	2.298	2.464
-42	-	-	-	2 1/2	-	-	3.000	1.250	2.333	2.556	2.395	2.602
-43	-	-	-	-	-	-	3.060	1.000	2.245	2.583	2.305	2.620
-44	-	-	-	-	-	-	3.160	1.137	2.405	2.677	2.475	2.725
-45	-	2 1/2	-	-	-	-	3.210	.810	2.568	2.704	2.638	2.759
-46	2 1/2	-	-	-	-	M75, M76	3.440	1.120	2.623	2.917	2.685	2.955
-47	-	-	-	-	-	-	3.590	.870	2.924	3.097	2.994	3.150
-48	-	-	-	-	-	-	3.750	1.120	2.920	3.202	2.990	3.250
-49	3	-	-	-	-	-	4.000	1.250	3.154	3.515	3.225	3.562
-50	-	-	-	-	-	-	3.880	.870	3.244	3.398	3.324	3.458
-500	3 1/2	3 1/2	-	-	-	-	3.910	.870	3.265	3.418	3.347	3.486
-51	3 1/2	3 1/2	-	-	-	-	4.340	.870	3.710	3.840	3.790	3.920

## CENTER-TAB PULL PLUGS

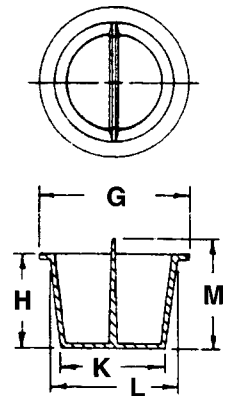
*This tapered plug features a well-engineered center-pull tab that extends above the flange area, making it easy to grasp and remove from a variety of threaded and non-threaded ports. Ideal for fittings with internal o-rings. Center-pull tab will not break off during removal.*

**When used as Plug:** "L" dimension should be at least .020" larger than diameter to be plugged. Larger diameters may require more interference.

Material: Orange Low Density Polyethylene

**Part No. TN119-** (Size Code No.)

Size Code No.	To Plug Thread Size			Dimensions (inches)				
	N.P.T. Sizes	Unified Thread Sizes	Metric Thread Sizes	G	H	K	L	M
-1	-	5/16-24	M7	.380	.340	.209	.269	.590
-2	-	-	M8/M8 x 1	.470	.380	.239	.303	.620
-3	-	-	-	.470	.410	.267	.335	.780
-4	-	3/8-24	M10/ M10 x 1.25	.500	.380	.299	.367	.780
-6	1/8	-	-	.560	.380	.331	.397	.750
-7	-	7/16-20	M12	.560	.380	.362	.428	.750
-8	-	-	M12 x 1.25	.590	.410	.392	.459	.750
-9	1/4	1/2-20	M14	.620	.410	.422	.486	.780
-10	-	-	M14 x 1.5	.660	.530	.448	.512	.530
-11	-	9/16-18	-	.690	.470	.472	.548	.810
-12	-	-	M16	.720	.810	.500	.568	.810
-14	-	5/8-18	-	.750	.720	.533	.608	.720
-15	3/8	-	M18	.780	.220	.580	.625	.340
-16	3/8	-	M18	.780	.500	.551	.633	.750
-17	-	-	M18 x 1.5	.840	.530	.580	.668	.750
-18	-	-	-	.840	.530	.610	.695	.780
-19	-	3/4-16	M20	.880	.500	.640	.727	.750
-20	-	-	M20 x 1.5	.880	.530	.678	.755	.780
-21	1/2	-	M22	.860	.222	.725	.770	.340
-22	1/2	-	M22	.940	.590	.691	.787	.750
-23	-	-	M22 x 1.5	1	.590	.727	.825	.840
-24	-	7/8-14	M24	1	.590	.752	.849	.750
-25	-	-	M24 x 2	1.060	.660	.803	.912	.910
-26	3/4	-	M27	1.120	.750	.869	.973	1.000
-27	3/4	-	M27	1.120	.660	.869	.973	.880
-28	-	1 1/16-12	M27 x 2	1.160	.710	.915	1.040	.910
-29	-	-	M30	1.250	.780	.967	1.092	1.030
-30	-	-	M30 x 2	1.340	.750	1.030	1.144	1.000
-31	1	-	M33	1.340	.500	1.100	1.210	.620
-32	1	-	M33	1.410	.780	1.093	1.219	1.000
-33	-	1 5/16-12	M33 x 2/ M36	1.440	.750	1.179	1.286	1.000
-34	-	-	-	1.500	.780	1.292	1.356	1.000
-340	-	-	-	1.530	.750	1.235	1.360	1.000
-35	-	-	-	1.720	.530	1.360	1.420	.660
-36	-	-	M39/ M39 x 3	1.620	.750	1.312	1.465	1.000



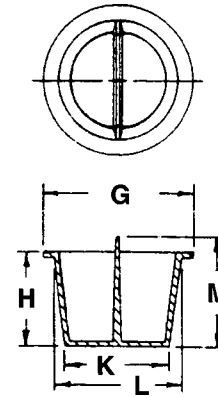
(continued next page)

CAPS and PLUGS (continued)

Continued From Page 269

Part No. TN119- (Size Code No.)

Size Code No.	To Plug Thread Size			Dimensions (inches)				
	N.P.T. Sizes	Unified Thread Sizes	Metric Thread Sizes	G	H	K	L	M
-37	-	-	-	1.750	.880	1.344	1.527	1.000
-38	1 1/4	-	-	1.750	.750	1.451	1.601	1.000
-39	-	-	-	1.940	.780	1.633	1.750	1.110
-40	-	-	-	1.310	.500	1.735	1.784	.750
-41	-	-	-	2.160	1.000	1.807	1.938	1.250
-42	1 1/2	-	-	2.030	.500	1.820	1.835	.750
-43	-	2 1/4-12	-	2.440	1.030	2.067	2.243	1.250
-44	2	-	-	2.530	.500	2.232	2.262	.750
-45	-	2 1/2-12	-	2.660	1.000	2.300	2.464	1.250
-46	2 1/2	-	-	2.970	.500	2.698	2.866	.750
-47	-	-	-	3.280	.750	2.850	2.982	1.000
-48	3	-	-	3.280	.750	3.320	3.452	1.000

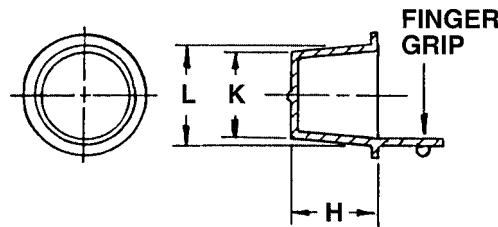


**SIDE-TAB PULL PLUGS**

Tapered plug features a side tab design that extends above the flange making it easy to grasp and remove from a variety of threaded and non-threaded fittings. Great for use in hard-to-reach locations. Side tab will facilitate ease of removal.

When used as Plug: "L" dimension should be at least .020" larger than diameter to be plugged. Larger diameters may require more interference.

Material: Orange Low Density Polyethylene



Part No. TN148 - (Size Code No.)

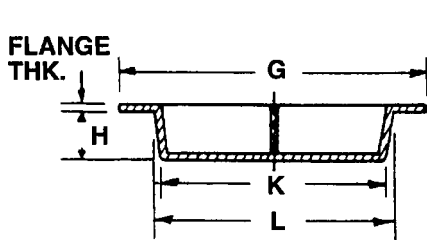
Size Code No.	To Plug Thread Sizes			Dimensions (Inches)			Size Code No.	To Plug Thread Sizes			Dimensions (Inches)		
	N.P.T.	Standard	Metric	H	K	L		N.P.T.	Standard	Metric	H	K	L
-1000	-	-	-	.410	.239	.303	-8	1/2	-	M22	.590	.691	.787
-1001	-	-	-	.410	.267	.335	-80	-	-	M22x1.5	.590	.727	.825
-1	-	3/8	M10/ M10x1.25	.380	.299	.367	-81	-	7/8	M24	.590	.752	.849
							-82	-	-	M24x2	.650	.803	.912
-100	1/8	-	-	.380	.331	.397	-83	-	-	-	.620	.819	.933
-101	-	7/16	M12	.410	.362	.428	-9	3/4	-	M27	.660	.869	.973
-2	1/4	1/2	M14	.410	.422	.486	-10	-	1 1/16	M27x12	.720	.915	1.040
-3	-	-	M14x1.5	.410	.448	.512	-102	-	-	M30x2	.780	.967	1.092
-4	-	9/16	-	.470	.472	.548	-103	-	-	M30x2	.780	.997	1.144
-40	-	-	-	.470	.500	.568	-104	1	-	M33	.780	1.093	1.219
-41	-	-	M16	.440	.533	.608	-105	-	1 5/16	M33x2	.750	1.179	1.286
-5	3/8	-	M18	.500	.551	.633	-106	-	-	-	.840	1.233	1.358
-6	-	-	M18x1.5	.530	.580	.668	-107	1 1/4	-	M36x3	.750	1.451	1.601
-60	-	-	-	.530	.610	.695	-108	-	-	-	.750	1.633	1.750
-61	-	3/4	M20	.500	.642	.729							
-7	-	-	M20x1.5	.530	.678	.755							

## EXTRA-WIDE FLANGE CENTER-PULL PLUGS

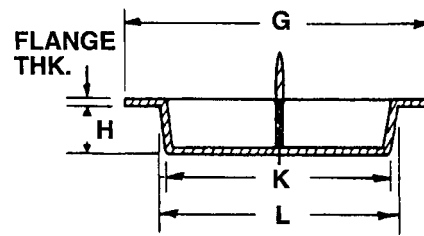
*Tapered plug features a center pull-tab design that extends above the flange making it easy to remove. The extra-wide flange design protects more surface area and prevents improper installation.*

**When used as Plug:** "L" dimension should be at least .020" larger than diameter to be plugged. Larger diameters may require more interference.

Material: Orange Low Density Polyethylene



Size Code Nos. -1, -3, -5, -9, -10, -14 and -15



Size Code Nos. -2, -4, -6, -7, -8, -11 and -13

### Part No. TN120 - (Size Code No.) - 132OR

Size Code No.	To Plug Thread Sizes			Dimensions (Inches)					
	N.P.T.	Standard	Metric	Hole Size	G	H	K	L	Flange Thk.
-1	-	9/16	-	1/2	1 1/4	17/32	.480	.540	.030
-2	-	11/16	M18 x 1.5	5/8	1 1/16	1/2	.590	.647	.030
-3	1/2	-	-	3/4	1 1/2	1/2	.730	.790	.030
-4	-	7/8	M24	-	1 5/16	1/2	.752	.849	.032
-5	3/4	-	-	1	1 7/8	17/32	.980	1.040	.040
-6	-	1 1/16	M27 x 2	-	1 19/32	3/4	.921	1.075	.060
-7	-	-	-	-	1 1/4	3/4	1.003	1.144	.070
-8	-	1 5/16	M33 x 2, M36	-	1 7/8	11/16	1.202	1.297	.062
-9	-	-	-	1 1/4	2	1/2	1.230	1.290	.040
-10	-	-	-	1 1/2	2 3/8	3/4	1.460	1.550	.050
-11	1 1/4	1 5/8	-	-	2 1/4	3/4	1.519	1.602	.062
-13	-	-	-	-	2 17/32	3/4	1.807	1.932	.050
-14	2	-	-	2	2 3/4	3/4	1.960	2.050	.050
-15	-	-	-	2 1/2	3 1/4	3/4	2.460	2.550	.050

**CAPS and PLUGS (continued)**

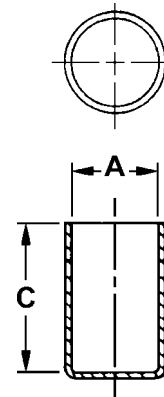
Tube caps are designed to protect the ends of threaded and non-threaded tubing, rods or packaging tubes with a friction-fit straight-wall design. Used extensively for masking of painting, plating and sandblasting operations.

Material: Orange Low Density Polyethylene  
Meets MIL-C-5501/9, MIL-C-52078, NAS 844

**SHALLOW TUBE CAPS**

Part No. TN114 - (Size Code No.)

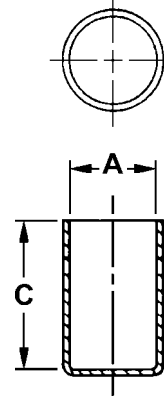
Size Code No.	To Cap Dia. A	C	Size Code No.	To Cap Dia. A	C	Size Code No.	To Cap Dia. A	C
-2	3/16	.470	-7	7/16	.500	-103	1	.450
-3	1/4	.500	-8	1/2	.500	-11	1	.620
-4	5/16	.380	-10	3/4	.380	-12	1 1/4	.500
-5	3/8	.460	-100	1	.500	-15	2 1/8	.500
-6	7/16	.220	-102	1	.500			



**LONG TUBE CAPS**

Part No. TN116 - (Size Code No.)

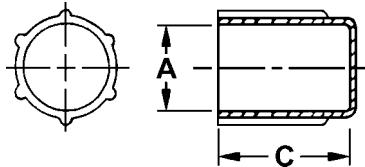
Size Code No.	To Cap Dia. A	C	Size Code No.	To Cap Dia. A	C	Size Code No.	To Cap Dia. A	C
-1	15/64	1.130	-7	3/4	2.470	-15	1 3/8	1.590
-2	3/8	1.120	-8	7/8	1.750	-16	1 1/2	1.750
-3	27/64	1.250	-10	1	1.750	-17	1 5/8	1.250
-4	7/16	1.500	-12	1 1/4	1.500	-18	1 27/32	1.210
-5	5/8	2.500	-13	1 1/4	1.750	-19	2	1.530
-6	5/8	1.500	-14	1 3/8	1.500			



**RIBBED TUBE CAPS**

Part No. TN115 - (Size Code No.)

Size Code No.	To Cap Dia. A	C
-1	3/8	.750
-3	7/16	.620
-4	15/32	.750
-5	1/2	.440
-6	9/16	.420



Outside ribs on this cap help with the removal process and provide additional protection.

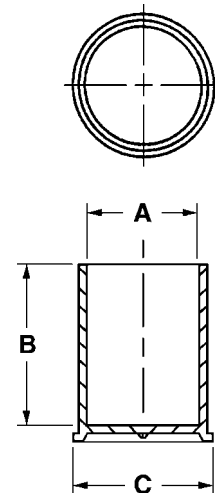
Straight-sided tube caps with a flanged to for easy removal. Designed to protect threaded and non-threaded parts. Can be used for a variety of applications.

**FLANGED TUBE CAPS**

Material: Orange Low Density Polyethylene

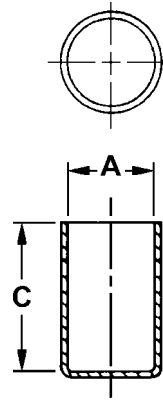
Part No. TN143 - (Size Code No.)

Size Code No.	To Cap Thread Size	Dimensions (inches)			Size Code No.	To Cap Thread Size	Dimensions (inches)		
		A	B	C			A	B	C
-1	5/16	.315	.840	.510	-3	11/16	.678	.880	.840
-101	3/8	.377	.840	.580	-4	3/4	.737	.880	.910
-102	M14	.535	.810	.690	-5	7/8	.866	.880	1.030
-2	5/8	.611	.880	.750	-7	1 1/16	1.048	1.120	1.220



Tube caps on pages 272 and 273 are designed to protect the ends of threaded and non-threaded tubing, rods or packaging tubes with a friction-fit straight-wall design. Used extensively for masking of painting, plating and sandblasting operations.

Material: Orange Low Density Polyethylene  
Meets MIL-C-5501/9, MIL-C-52078, NAS 844



## STANDARD TUBE CAPS

Part No. TN113 - (Size Code No.)

Size Code No.	To Cap Dia. A	C	Size Code No.	To Cap Dia. A	C	Size Code No.	To Cap Dia. A	C	Size Code No.	To Cap Dia. A	C
-2	1/8	.620	-18	5/8	.880	-32	1 1/8	.880	-48	2 39/64	1.000
-3	1/8	.750	-19	5/8	.940	-33	1 1/4	1.000	-49	2 5/8	1.000
-4	5/32	.590	-20	11/16	.880	-34	1 5/16	1.000	-50	2 3/4	1.000
-5	11/64	.620	-21	11/16	.750	-35	1 3/8	.620	-51	3	1.000
-6	3/16	.620	-22	3/4	.880	-36	1 3/8	1.000	-52	3 1/8	1.380
-7	13/64	.620	-23	3/4	.940	-37	1 1/2	1.000	-53	3 1/4	1.000
-9	1/4	.880	-24	13/16	.690	-38	1 5/8	1.000	-54	3 7/16	1.000
-10	17/64	.750	-25	13/16	.880	-39	1 23/32	1.000	-55	3 1/2	1.000
-11	5/16	.880	-26	7/8	.620	-40	1 3/4	.880	-550	3 17/32	2.000
-12	3/8	.880	-27	7/8	.620	-41	1 3/4	1.000	-56	4	1.130
-13	7/16	.880	-28	7/8	.880	-42	1 7/8	1.000	-57	4 1/8	1.500
-130	7/16	1.000	-29	29/32	.750	-43	2	1.000	-58	4 13/16	.640
-14	1/2	.880	-290	29/32	.880	-44	2 1/8	1.000	-59	4 7/8	.920
-16	9/16	.620	-302	1	.750	-45	2 1/4	.880	-60	8	2.300
-15	9/16	.880	-31	1	1.000	-46	2 1/4	1.000			
-17	5/8	.880	-310	1 1/16	1.000	-47	2 1/2	.880			

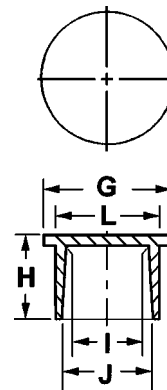
## MULTI-PURPOSE (UNIFIED) CAPS

Designed to protect unified threads, but can be used to protect both threaded and non-threaded fittings. Easy-to-use flange makes for quick removal. Can be used as a cap or plug to protect a variety of applications.

Material: Orange Low Density Polyethylene

Part No. TN109 - (Size Code No.)

Size Code No.	Unified Thread Size	Dimensions (inches)				
		G	H	I	J	L
-1	3/8	.530	.660	.360	.360	.420
-2*	7/16	.620	.560	.420	.430	.490
-3	9/16	.750	.830	.525	.551	.611
-4	5/8	.810	.470	.605	.605	.665
-5*	5/8	.810	.750	.605	.605	.665
-50	-	.940	.470	.687	.627	-
-6	-	1.000	.580	.775	.785	.865
-8*	-	1.000	.720	.780	.780	.840
-9	13/16	1.050	.630	.785	.795	.855
-10	-	1.120	.920	.760	.780	.840
-11*	7/8	1.140	.830	.845	.845	.905



\*Cap has 4 external vertical ribs

CAPS and PLUGS (continued)

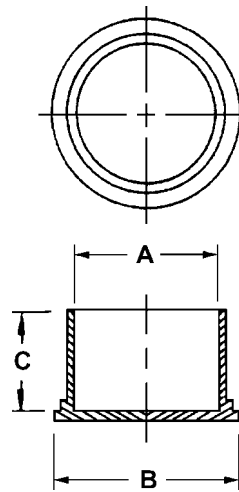
## ELECTRICAL CONNECTOR CAPS

Straight-sided, thin-wall closures designed to protect threaded connectors. Flanged end allows easy removal in hard-to-reach areas. Versatile design protects a variety of threaded and non-threaded applications.

Part No. TN111 - (Size Code No.)

Size Code No.	To Cap Thread Size	A	B	C
-1	1/2	.476	.720	.500
-2	5/8	.600	.840	.500
-3	3/4	.724	.940	.500
-4	7/8	.849	1.090	.500
-5	1	.974	1.220	.500
-6	1 1/8	1.097	1.340	.560
-7	1 3/16	1.168	1.410	.560
-8	1 1/4	1.221	1.440	.560
-9	1 3/8	1.344	1.590	.560
-10	1 7/16	1.408	1.660	.560
-11	1 1/2	1.467	1.690	.560
-12	1 3/4	1.716	2.000	.560
-13	2	1.964	2.220	.620
-14	2 1/4	2.210	2.440	.620
-15	2 1/2	2.460	2.690	.620
-16	2 3/4	2.730	2.960	.620
-17	3	2.980	3.220	.620
-18	4	3.922	4.190	1.000
-19	5	4.900	5.120	1.250

Material: Red Low Density Polyethylene  
Meets NAS-813.



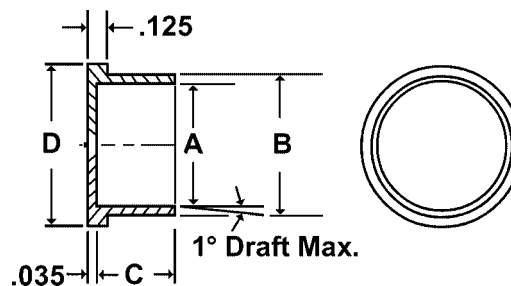
## ELECTRICAL CONNECTOR CAPS

Although designed to protect electrical connectors from dust, damage and moisture, this part can be used as a cap or plug for a variety of different applications. Flanged end makes for easy removal in hard-to-reach areas.

Part No. TN158 - (Size Code No.)

Size Code No.	A	B	C	D
-100	.245	.305	.500	.430
-102	.305	.365	.500	.500
-104	.368	.438	.500	.620
-1	.480	.540	.500	.740
-106	.542	.602	.500	.780
-2	.605	.665	.500	.840
-3	.720	.775	.500	.970
-4	.850	.905	.500	1.120
-5	.973	1.035	.500	1.220
-6	1.093	1.155	.560	1.330
-60	1.168	1.238	.560	1.430
-7	1.231	1.301	.560	1.470
-8	1.340	1.410	.560	1.590
-80	1.408	1.478	.560	1.650
-9	1.463	1.533	.560	1.700
-10	1.715	1.790	.560	1.950
-11	1.965	2.040	.560	2.220
-12	2.215	2.290	.600	2.440
-13	2.440	2.530	.600	2.660
-14	2.720	2.812	.600	2.960
-15	2.960	3.050	.600	3.220

Material: Red Low Density Polyethylene  
Meets MS-90376 and NAS 831.



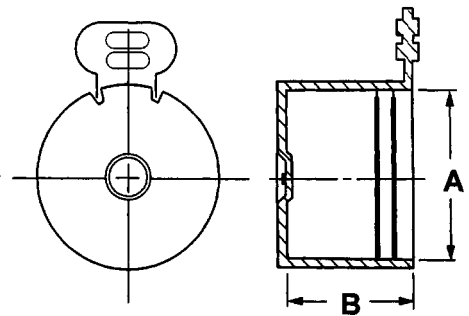
## TEAR-TAB (STRAIGHT-THREAD) CAPS

Protect threads from damage, Easy-to-use tear-tab caps employ friction for snug fit. To remove, simply pull tear tab and discard.

Material: Natural Low Density Polyethylene

Part No. TN160 - (Size Code No.)

Size Code No.	To Cap Thread Size	SAE/JIC Fitting Size	A	B
-1	3/8	3	.367	.440
-2	7/16	4	.428	.460
-3	1/2	5	.492	.460
-4	9/16	6	.554	.480
-5	5/8	-	.616	.480
-6	11/16	7	.678	.480
-7	3/4	8	.741	.560
-8	13/16	9	.803	.560
-9	7/8	10	.865	.650
-10	1	11	.990	.650
-11	1 1/16	12	1.053	.750
-12	1 3/16	13	1.178	.750
-13	1 5/16	16	1.303	.750
-14	1 7/16	17	1.428	.750
-15	1 5/8	20	1.616	.820
-16	1 11/16	21	1.678	.820
-17	1 7/8	24	1.866	.950
-18	2 1/2	32	2.491	1.100



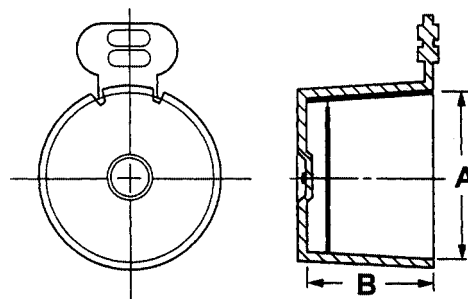
## TEAR TAB CAPS

Designed to protect national pipe threads (NPT), its versatility allows for numerous types of applications. Engineered to engage threads by using a friction fit. To remove, simply pull tear tab and discard.

Material: Natural Low Density Polyethylene

Part No. TN142 - (Size Code No.)

Size Code No.	To Cap N.P.T. Size	A	B
-100	1/16	.300	.320
-1	1/8	.400	.320
-2	1/4	.553	.490
-3	3/8	.670	.490
-4	1/2	.835	.640
-5	3/4	1.040	.650
-6	1	1.302	.810
-7	1 1/4	1.655	.840
-8	1 1/2	1.880	.850
-9	2	2.360	.890



CAPS and PLUGS (continued)

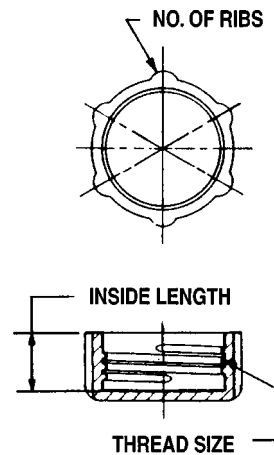
## THREADED (UN/UNS) CAP

Originally engineered for use in aircraft and hydraulic equipment applications. Seals out contaminants while protecting threads. Rolled threads allow cap to be either pushed or threaded on. Special threads meet UN and UNS specifications.

Material: Blue High Density Polyethylene  
Meets Mil-8779-ANSI BI-I

Part No. TN103 - (Size Code No.) Material: Blue High Density Polyethylene

Size Code No.	Inside Tube O.D.	Thread Size	Length +/- .010	No. of Ribs
-1	3/16	3/8-28	.200	4
-2	1/4	7/16-24	.240	6
-3	5/16	1/2-24	.240	6
-4	3/8	9/16-20	.260	6
-5	1/2	23/32-20	.270	8
-6	5/8	27/32-18	.340	8
-7	3/4	1-16	.380	8
-8	7/8	1 1/8-16	.400	8
-9	1	1 1/4-14	.430	8
-10	1 1/4	1 33/64-14	.430	8
-11	1 1/4	1 37/64-14	.430	8
-12	1 1/2	1 25/32-14	.500	8
-13	1 1/2	1 27/32-14	.500	8



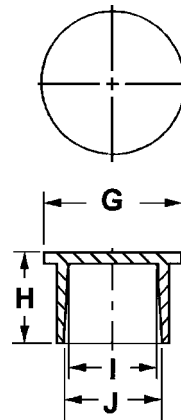
## NON-THREADED (NPT) CAPS

Designed to cap NPT fittings, but can be used to protect a variety of items. A heavy-duty, tapered, multi-use cap with a flange for easy insertion and removal.

Material: Orange Low Density Polyethylene

Part No. TN105 - (Size Code No.)

Size Code No.	N.P.T. Size	Dimensions (Inches)			
		G	H	I	J
-1	1/8	.590	.370	.363	.385
-2	1/4	.730	.420	.493	.523
-3	3/8	.890	.620	.585	.662
-4	1/2	1.060	.590	.725	.856
-5	3/4	1.250	.690	.990	1.040
-6	1	1 33/64	.690	1.257	1.305
-7	1 1/2	2.110	.750	1.842	1.898
-8	-	2.250	1.290	1.962	1.972



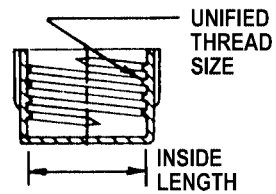
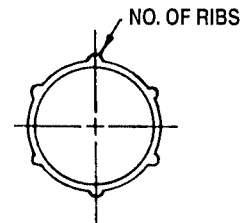
## THREADED (STRAIGHT) CAPS

*Designed to protect straight threads on studs and fittings. Rolled threads allow you to either push or thread on. Tight seal makes an ideal mask for painting or plating, as well as a deterrent for contaminants.*

Material: Orange Low Density Polyethylene  
 Meets MIL-C-5501/11 (NAS-814)  
 MIL-C-5501/3, NAS 832

Part No. TN112 - (Size Code No.)

Size Code No.	To Cap Thread Size	Dimensions ( inches)		No. Ribs
		Tubing Size	Inside Length	
-1	3/8-24	3/16	.470	6
-2	7/16-20	1/4	.470	6
-3	7/16-24	1/4	.310	6
-4	1/2-20	5/16	.310	6
-5	1/2-20	5/16	.500	6
-6	1/2-20	5/16	.880	6
-7	9/16-18	3/8	.500	6
-8	5/8-18	3/8	.470	6
-10	5/8-18	3/8	.590	6
-11	5/8-18	3/8	.750	6
-12	5/8-24	-	.380	6
-13	3/4-16	1/2	.500	6
-14	3/4-16	1/2	.560	6
-140	3/4-16	1/2	.630	6
-15	3/4-20	-	.590	6
-16	3/4-20	-	.500	6
-17	7/8-14	5/8	.720	6
-18	7/8-18	5/8	.780	6
-19	7/8-20	5/8	.720	6
-21	1-20	-	.780	8
-22	1 1/16-12	3/4	.750	8
-23	1 1/16-14	3/4	.750	8
-24	1 1/8-18	-	.470	8
-26	1 1/4-18	-	.470	8
-27	1 5/16-12	1	.880	8
-28	1 3/8-18	1	.470	8
-29	1 5/8-12	1 1/4	.910	8
-30	1 7/8-12	1 1/2	1.000	8



CAPS and PLUGS (continued)

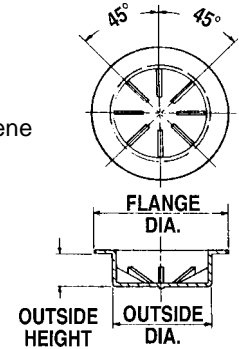
## SUCKER- ROD COUPLING PLUGS

Heavy-duty plug designed to protect sucker-rod couplings but may fit a variety of applications where extra protection is required.

Part No. TN145 - (Size Code No.)

Material: Black Low Density Polyethylene

Size Code No.	Coupling Size	A Outside Dia.	B Outside Hgt.	C Flange Dia.	Size Code No.	Coupling Size	A Outside Dia.	B Outside Hgt.	C Flange Dia.
-1	5/8	.975	3/8	1 3/8	-3	7/8	1.225	3/8	1 11/16
-2	3/4	1.100	3/8	1 1/2	-4	1	1.415	3/8	2



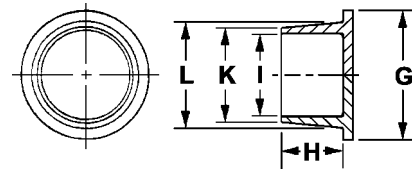
## UNIFIED PLUGS

Designed to protect hydraulic and air-hose fittings; however, its unique style lends itself to a variety of applications. Thick, heavy-duty flanged end for good fit and ease of removal. Tapered body ensures a tight fit. Can also be used as a cap.

Part No. TN108 - (Size Code No.)

Material: Orange Low Density Polyethylene

Size Code No.	Standard Thread Size	Hole Size	Dimensions (Inches)				
			G	H	I	K	L
-1	-	9/16	3/4	1/2	.490	.550	.590
-2	3/4	-	1 3/32	1/2	.594	.658	.750
-3	7/8	-	1 3/16	1/2	.691	.755	.870
-4	1 1/16	-	1 5/8	5/8	.880	.940	1.044
-5	-	1 1/16	1 5/16	5/8	.970	1.040	1.100
-6	1 1/4	-	1 29/32	19/32	1.118	1.188	1.305
-7	1 3/4	-	2 17/64	19/32	1.405	1.545	1.636
-8	-	1 5/8	1 7/8	3/4	1.530	1.600	1.660
-10	-	1 7/8	2 1/8	3/4	1.780	1.850	1.910



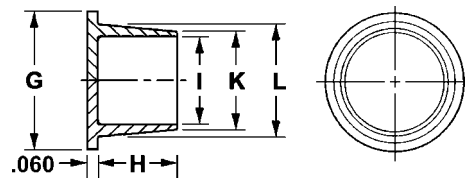
## NPT PLUGS

Designed to plug NPT fittings but can be used to protect a variety of applications. A heavy-duty, multi-use plug with an outside-body taper and flange for easy insertion and removal. Flush fit blocks out contamination. Can also be used as a cap.

Part No. TN106 - (Size Code No.)

Material: Orange Low Density Polyethylene

Size Code No.	N.P.T. Size	Dimensions (Inches)				
		G	H	I	K	L
-1	1/8	33/64	9/32	.271	.331	.397
-2	1/4	39/64	9/32	.362	.422	.486
-3	3/8	49/64	1/2	.490	.550	.640
-4	1/2	29/32	1/2	.621	.691	.787
-5	3/4	1 3/32	5/8	.800	.870	.974
-6	1	1 11/32	21/32	1.023	1.093	1.219
-7	1 1/4	1 23/32	3/4	1.370	1.450	1.600
-8	1 1/2	2 1/32	3/4	1.662	1.742	1.822
-9	2	2 15/32	55/64	2.152	2.232	2.262



CAPS and PLUGS (continued)

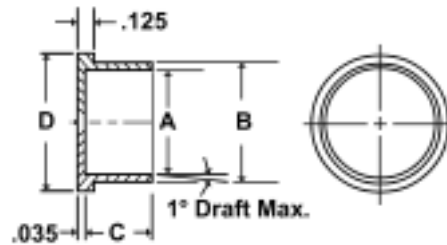
## ELECTRICAL CONNECTOR PLUGS

Designed to protect electrical connectors from dust, damage and moisture. The versatility of the design allows them to be used as a cap or plug for a variety of different applications. Flanged end makes for easy removal from hard-to-reach areas.

Material: Yellow Low Density Polyethylene  
Meets MS-90376, NAS 837

**Part No. TN150** - (Size Code No.)

Size Code No.	Dimensions (inches)			
	A	B	C	D
-1	.483	.413	.620	.670
-2	.595	.530	.620	.750
-3	.715	.655	.620	.860
-4	.845	.785	.620	1.030
-5	.963	.893	.620	1.120
-6	1.088	1.028	.620	1.400
-7	1.215	1.150	.620	1.250
-8	1.340	1.270	.620	1.500
-9	1.460	1.390	.620	1.640
-10	1.580	1.540	.620	1.810
-11	1.718	1.648	.620	1.880
-12	1.970	1.890	.620	2.120
-13	2.210	2.140	.620	2.340
-14	2.450	2.380	.620	2.600
-15	2.700	2.630	.620	2.880
-16	2.950	2.880	.620	3.120



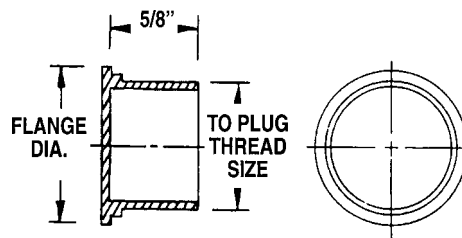
## ELECTRICAL CONNECTOR PLUGS

Straight-sided, thin-wall closures designed to protect threaded connectors. Flanged end makes for easy removal in hard-to-reach areas. Versatile design will protect a variety of threaded and non-threaded applications.

Material: Yellow Low Density Polyethylene  
Meets NAS 820

**Part No. TN110** - (Size Code No.)

Size Code No.	To Plug Thread Size	Flange Diameter
-1	1/2	.660
-2	5/8	.750
-3	3/4	.840
-4	7/8	1.000
-5	1	1.160
-6	1 1/8	1.250
-7	1 1/4	1.380
-8	1 3/8	1.500
-9	1 1/2	1.620
-10	1 3/4	1.880
-11	2	2.090
-12	2 1/4	2.380
-13	2 1/2	2.620



CAPS and PLUGS (continued)

### THIN - WALL TUBING PLUGS, type K/SAE J-528

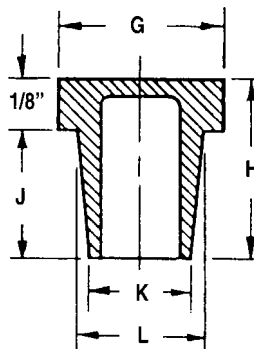
For Smaller Copper and Aluminum Tubing Sizes

Specifically designed to plug and protect Type K and SAE J-528 tubing. Tapered body provides snug friction fit for small diameter copper tubing. Flanged top sits flush with the outside diameter of tube to protect roundness and seal out contaminants.

Material: Orange Low Density Polyethylene  
Meets NAS 843 (MIL-C-5501/8, MIL-C-52078)

Part No. TN121 - (Size Code No.)

Size Code No.	Dimensions (Inches)					
	Tubing O.D.	G	H	J	K	L
-2	3/16	.190	3/8	.250	.105	.140
-3	1/4	.250	1/2	.380	.165	.210
-4	5/16	.310	1/2	.380	.225	.275
-40	3/8	.380	.665	.540	.290	.330
-5	3/8	.380	5/8	.500	.290	.345
-6	1/2	.500	1/2	.380	.410	.470
-7	5/8	.630	11/16	.560	.530	.585
-70	11/16	.690	5/8	.500	.550	.640
-8	3/4	.750	11/16	.560	.665	.710
-9	29/32	.910	3/4	.620	.734	.834



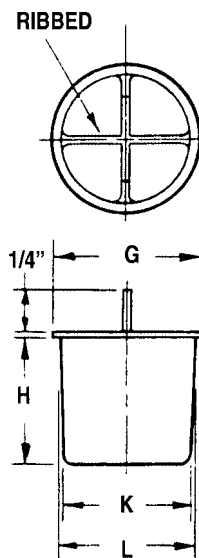
### THIN - WALL TUBING PLUGS, type K

Specifically designed to protect Type K-style tubing. Tapered body with reinforced-cross braces provides exceptional protection to the configuration of the tube end.

Material: Green Low Density Polyethylene

Part No. TN122 - (Size Code No.)

Size Code No.	Tubing Size O.D.	Tubing Size I.D.	Dimensions (Inches)			
			G	H	K	L
-1	3/8	.308	.380	3/8	.302	.312
-2	1/2	.406	.500	3/8	.394	.414
-3	5/8	.531	.630	1/2	.523	.543
-4	3/4	.656	.750	5/8	.646	.676
-5	7/8	.750	.880	3/4	.740	.770
-6	1 1/8	1.000	1.120	7/8	.990	1.020
-7	1 3/8	1.250	1.380	1	1.240	1.280
-8	1 5/8	1.487	1.620	1	1.477	1.517
-9	2 1/8	1.968	2.130	1	1.960	2.010
-10	2 5/8	2.444	2.630	1	2.420	2.470
-11	3 1/8	2.916	3.130	1	2.892	2.952



## THIN - WALL TUBING PLUGS, type L and M

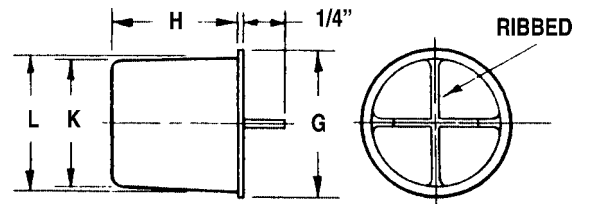
For Copper and Aluminum Tubing

Specifically designed to plug and protect Type L and M-style tubing. Tapered body with reinforced-cross braces provides exceptional protection for the configuration of the tube.

Material: Blue Low Density Polyethylene

Part No. TN123 - (Size Code No.)

Size Code No.	Tubing Size O.D.	Dimensions (Inches)			
		G	H	K	L
-1	3/8	.380	3/8	.320	.320
-2	1/2	.500	3/8	.420	.440
-3	5/8	.630	1/2	.540	.560
-4	3/4	.750	5/8	.660	.690
-5	7/8	.880	3/4	.780	.810
-6	1 1/8	1.130	7/8	1.020	1.050
-7	1 3/8	1.380	1	1.260	1.300
-8	1 5/8	1.630	1	1.500	1.540
-9	2 1/8	2.130	1	1.970	2.020
-10	2 5/8	2.630	1	2.450	2.500
-11	3 1/8	3.130	1	2.930	2.990
-12	3 5/8	3.630	1	3.410	3.450
-13	4 1/8	4.130	1	3.890	3.930



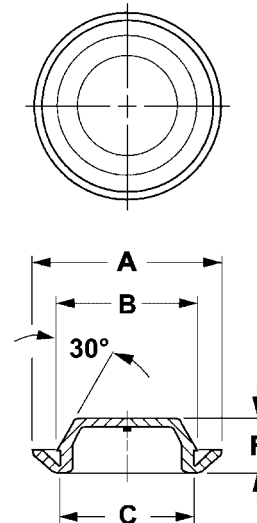
## SNAP-IN PLUGS, Recessed Style

Provides an attractive, finished appearance for access holes in sheet metal. Widely used on automobile bodies, tanks, appliances or in any application where an attractive appearance is needed. Flexible yet durable. Snap-in ring provides a secure fit.

Material: Black Low Density Polyethylene

Part No. TN127 - (Size Code No.)

Size Code No.	To Hole Plug Size	Dimensions (Inches)			
		A	B	C	F
-1	1/2	.880	.538	.500	.285
-2	3/4	1.160	.800	.750	.360
-20	13/16	1.150	.850	.812	.290
-3	7/8	1.250	.915	.875	.350
-4	1	1.380	1.050	1.000	.350
-40	1 3/32	1.440	1.010	1.160	.350
-41	1 1/8	1.530	1.880	1.125	.440
-5	1 1/4	1.630	1.308	1.250	.350
-6	1 1/2	1.880	1.550	1.500	.370
-60	1 5/8	2.000	1.675	1.625	.350
-7	1 3/4	2.130	1.800	1.750	.350
-8	2	2.380	2.050	2.000	.360
-9	2 1/2	3.000	2.570	2.500	.380
-10	3	3.560	3.060	3.000	.410



CAPS and PLUGS (continued)

## FLARED-FITTING PLUGS, Style A

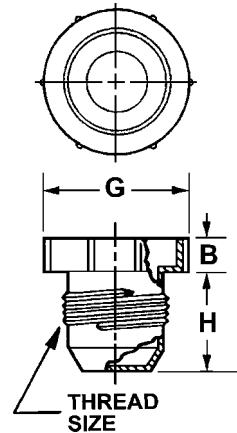
For the Automotive, Aircraft, Hydraulic and Pneumatic Industries

Designed to protect flared fittings as well as 37°-flared fittings without gasket. Engineered with knurled head for ease of application. Will meet low-pressure testing requirements.

Material: Red High Density Polyethylene

Part No. TN124 - (Size Code No.)

Size Code No.	To Plug Thread Size	To Plug Tubing Size	Dimensions		
			B	H	G
-1	3/8-24	3/16	.180	.460	.560
-2	7/16-20	1/4	.220	.500	.720
-3	1/2-20	5/16	.250	.530	.810
-4	9/16-18	3/8	.280	.530	.880
-5	5/8-18	3/8	.250	.590	.940
-6	3/4-16	1/2	.280	.750	1.060
-7	7/8-14	5/8	.280	.840	1.250
-8	1 1/16-12	3/4	.250	.860	1/410
-9	1 1/16-14	3/4	.250	.860	1/410
-10	1 3/16-12	7/8	.250	.930	1.500
-11	1 5/16-12	1	.250	.910	1.750
-12	1 1/2-12	-	.310	.930	1.810
-13	1 5/8-12	1 1/4	.340	.940	2.220
-14	1 3/4-12	-	.340	.970	2.310
-15	1 7/8-12	1 1/2	.380	1.060	2.470
-16	2 1/4-12	1 3/4	.380	1.310	2.750
-17	2 1/2-12	2	.380	1.310	3.090



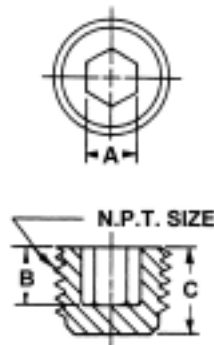
## THREADED PIPE PLUGS Hexagonal Socket

Socket design allows for threads to be protected during low-pressure testing and in-plant processing. Commonly used to keep contaminants and moisture from threaded port. Oil and heat resistant to 250°F. Not for permanent applications.

Material: Black Low Density Polyethylene  
Meets MIL-C-5501/5, NAS 840

Part No. TN130 - (Size Code No.)

Size Code No.	To Plug N.P.T Size	Dimensions (inches)		
		A	B	C
-1	1/4-18	.250	.310	1/2
-2	3/8-18	.310	.380	9/16
-3	1/2-14	.380	.380	9/16
-4	3/4-14	.560	.500	5/8
-5	1-11 1/2	.630	.530	3/4



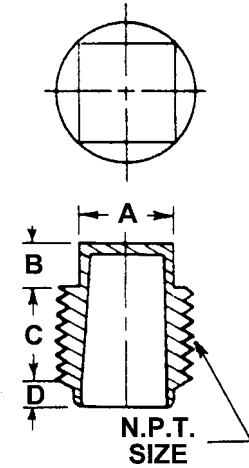
## THREADED PIPE PLUGS Square Head

*Ideal for low-pressure testing and in-house handling. Square-head design makes for easy application. Protects threaded ports against contaminants and moisture. Resists oil and heat up to 250°F. Not for permanent applications.*

Material: Black High Density Polyethylene  
Meets MIL-C-5501/5, NAS 840

Part No. TN129 - (Size Code No.)

Size Code No.	N.P.T. Size	Dimensions (inches)			
		A	B	C	D
-1	1/8-27	.280	1/4	.290	1/16
-2	1/4-18	.380	1/4	.350	1/16
-3	3/8-18	.440	1/4	.420	1/16
-4	1/2-14	.560	1/4	.470	1/16
-5	3/4-14	.620	1/4	.520	3/32
-6	1 -11 1/2	.810	1/4	.590	3/32
-7	1 1/4-11 1/2	1.000	3/8	.830	1/8
-8	1 1/2-11 1/2	1.250	3/8	.830	1/8



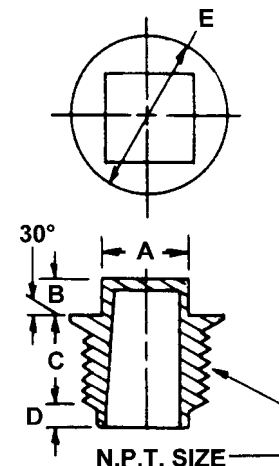
## THREADED PIPE PLUGS Square Head with Flange

*Flange design allows plug to protect circumference of port while protecting threads from contaminants and moisture. Commonly used during low-pressure testing and in-plant processing. Combats oil and heat up to 250°F. Not for permanent applications.*

Material: Black High Density Polyethylene  
Meets MIL-C-5501/5, NAS 840

Part No. TN128 - (Size Code No.)

Size Code No.	N.P.T. Size	Dimensions (inches)				
		A	B	C	D	E
-1	1/8-27	.430	3/16	.290	3/32	9/16
-2	1/4-18	.440	1/4	.350	3/32	11/16
-3	3/8-18	.440	1/4	.410	3/32	13/16
-4	1/2-14	.560	1/4	.470	3/32	1
-5	3/4-14	.630	1/4	.520	1/8	1 1/4



CAPS and PLUGS (continued)

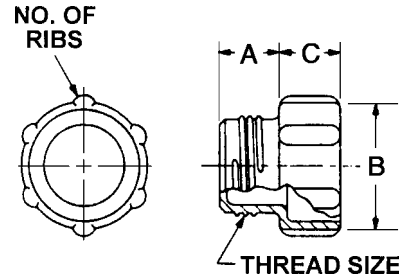
## THREADED (UN and UNS) PLUGS

Originally engineered for use in aircraft and hydraulic equipment applications. Seals out contaminants while protecting threads. Rolled threads allow cap to be either pushed or threaded. Special threads conform to UN and UNS specifications.

Material: Blue High Density Polyethylene

**Part No. TN104** - (Size Code No.)

Size Code No.	To Plug Tubing Size	To Plug Thread Size	Dimensions (inches)			No. of Ribs
			A	B	C	
-1	3/16	3/8-28	.280	.440	.250	4
-2	1/4	7/16-24	.300	.560	.310	6
-3	5/16	1/2-24	.300	.620	.310	6
-4	3/8	9/16-20	.320	.690	.310	6
-5	1/2	23/32-20	.320	.880	.310	6
-6	5/8	27/32-18	.400	1.000	.310	6
-7	3/4	1-16	.420	1.120	.310	8
-8	7/8	1 1/8-16	.450	1.250	.250	8
-9	1	1 1/4-14	.450	1.380	.250	8
-10	1 1/4	1 33/64-14	.450	1.620	.250	8
-11	1 1/4	1 37/64-14	.460	1.750	.250	8
-12	1 1/2	1 25/32-14	.550	2.000	.250	8
-13	1 1/2	1 27/32-14	.550	2.120	.250	8



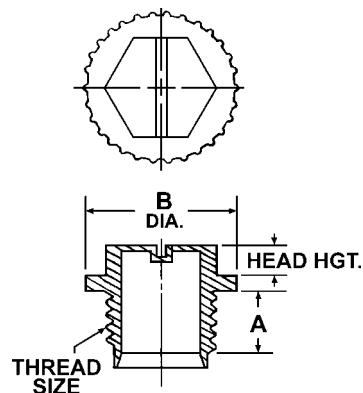
## GENERAL PURPOSE THREADED PLUGS

General purpose threaded plug that can be utilized for a variety of different applications. Can be tightened by hand, hex, wrench or screw-driver. Will meet low-pressure testing requirements.

Material: Red Polypropylene

**Part No. TN125** - (Size Code No.)

Size Code No.	To Plug Thread Size	Length Across Flats	Head Hgt.	Dimensions (Inches)	
				A	B
-100	7/16-20	.440	.190	.300	.680
-101	1/2-20	.500	.190	.360	.740
-102	9/16-18	.500	.190	.350	.810
-1	5/8-18	.560	.170	.340	.740
-2	3/4-16	.680	.180	.440	.890
-200	3/4-16	.690	.190	.440	1.030
-3	7/8-14	.750	.240	.500	1.020
-300	1 1/16-14	.880	.250	.630	1.310
-301	1-1/8-12	.880	.190	.620	1.470
-302	1 5/16-12	.880	.250	.880	1.560
-303	1-5/8-12	1.000	.250	1.000	2.000
-304	1-7/8-12	1.250	.250	1.000	2.250



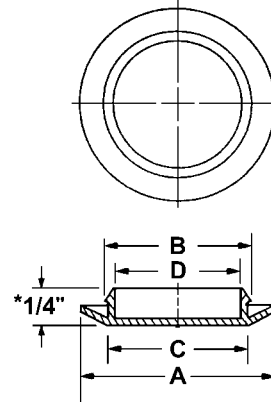
## SNAP-IN PLUGS, Flush Style

Provides an attractive, finished appearance for access holes in sheet metal. Widely used on automobile bodies, tanks, appliances or in any application where an attractive appearance is needed. Flexible yet durable. Snap-in ring provides a secure fit.

Material: Black Low Density Polyethylene

Part No. TN126 - (Size Code No.)

Size Code No.	To Plug Hole Size	Dimensions (Inches)			
		A	B	C	D
-1	3/8	.750	.410	.375	.310
-2	3/8	.750	.410	.375	.305
-200	7/16	.690	.470	.437	.360
-201	9/16	.880	.600	.560	.450
-3	1/2	.870	.540	.500	.400
-4	5/8	1.060	.675	.615	.500
-5	5/8	.810	.675	.625	.545
-6	11/16	1.060	.710	.680	.556
-7	3/4	1.000	.790	.750	.625
-70	13/16	1.110	.850	.812	.670
-8	7/8	1.160	.910	.875	.750
-82	7/8	1.300	.910	.875	.780
-80	15/16	1.310	.980	.937	.780
-9	1	1.380	1.070	1.010	.875
-10	1 3/32	1.310	1.150	1.090	1.000
-100	1 1/8	1.530	1.180	1.120	1.010
-11	1 3/16	1.560	1.240	1.200	1.050
-12	1 1/4	1.620	1.290	1.250	1.125
-120	1 5/16	1.680	1.360	1.310	1.140
-13	1 1/2	1.880	1.540	1.500	1.400
-14	1 3/4	2.120	1.790	1.750	1.620
-15	2	2.440	2.080	2.020	1.875
-150	2 1/8	2.490	2.170	2.100	1.940
-16	2 1/2	3.000	2.580	2.520	2.375
-17	2 5/8	3.120	2.675	2.645	2.520
-18	3	3.380	3.060	3.000	2.850
-180	3 1/8	3.520	3.180	3.110	2.940
-181	3 3/8	3.750	3.430	3.375	3.220
-182	3 1/2	3.860	3.560	3.500	3.340
-20	4	4.500	4.100	4.020	3.900
-21	4	4.500	4.100	4.020	3.900



- \* -1 .19 Overall Height
- \* -70 .37 Overall Height
- \* -100 .43 Overall Height
- \* -182 .35 Overall Height
- \* -20 .50 Overall Height
- \* -21 .50 Overall Height

## MULTI-PURPOSE PLUGS

Attractive plug to finish off holes in sheet metal or other surfaces. The "Quatra-Level" locking grooves on spring tabs adhere tightly to varying gauges of materials. Easy to install.

Material: Black and White Nylon

Part No. TN141 - (Size Code No.)

Size Code No.	Fits Hole Size (In.)
-1	1

