

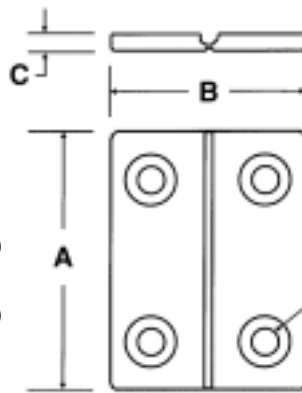
“LIVING” HINGE

This one-piece, flexure hinge has a variety of hole choices to further expand fastening applications. Countersunk holes accommodate a screw size more robust than competitors’ hinges giving end users a stronger fastened hinge.

All “Living” Hinges regardless of size and color have a VO flammability rating.

Available in the following material:

Material Code No.	Material Name
-147	Polypropylene, UV Stabilized, Flame Retardant (white)
-118	Polypropylene, UV Stabilized, Flame Retardant (black)
-119	Polypropylene, Flame Retardant (white)



Size Code Nos. 1-3 have holes countersunk for #8 flatheads.
 Size Code Nos. 4-12 have holes countersunk for #10 flatheads.
 Also available without countersink or hole.

Part No. HG400 - (Size Code No.)

Size Code No.	Hinge Dimensions			Hole
	A	B	C	
-1	1-1/2	1	1/8	Countersunk Hole
-2	1-1/2	1	1/8	Plain Hole
-3	1-1/2	1	1/8	No Hole *
-4	2	1-1/2	1/8	Countersunk Hole
-5	2	1-1/2	1/8	Plain Hole
-6	2	1-1/2	1/8	No Hole *
-7	2-1/2	2	1/8	Countersunk Hole
-8	2-1/2	2	1/8	Plain Hole
-9	2-1/2	2	1/8	No Hole *
-10	3	2-1/2	1/8	Countersunk Hole
-11	3	2-1/2	1/8	Plain Hole
-12	3	2-1/2	1/8	No Hole *

*Can be furnished with no holes for welding.

PLASTIC HINGES

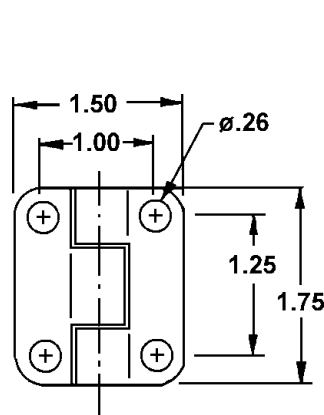
Available in the following material:

Material Code No.	Material Name
-46	Polycarbonate, (clear)
-113	Polypropylene, 40% Glass-filled, (black)
-116	Polypropylene, 40% Glass-filled, (white)
-824	Isoplast™, 30% Short Glass Fiber, (natural)
-825	Isoplast™, 30% Short Glass Fiber, (black)
-826	Isoplast™, 30% Short Glass Fiber, (white)

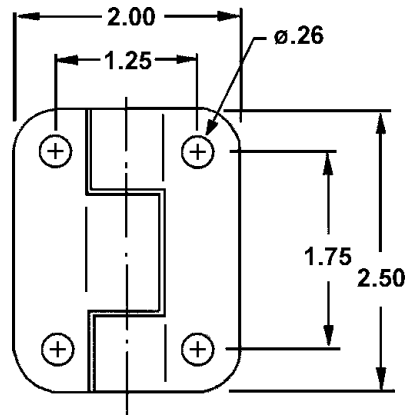
Handles are also available in a variety of colors.

Part No. HG100 - (Size Code No.) - (Material Code No.)

Size Code No.	Hinge Dimensions
-10	1 1/2 x 1 3/4"
-20	2 x 2 1/2"



Size Code No. -10



Size Code No. -20

LIFT-OFF HINGE

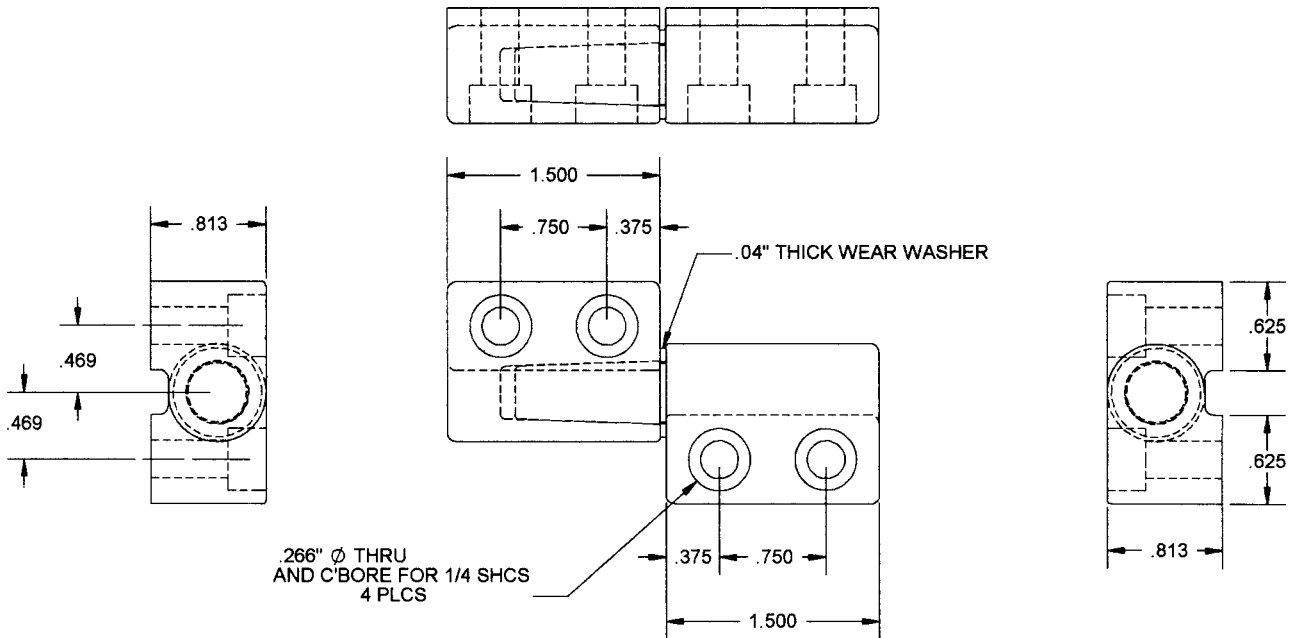
Available in the following material:

Material Code No.	Material Name
-113	Polypropylene, 40% Glass-filled, (black)
-116	Polypropylene, 40% Glass-filled, (white)
-825	Isoplast™, 30% Short Glass Fiber, (black)
-826	Isoplast™, 30% Short Glass Fiber, (white)

Colors and other materials including fiber-filled materials available upon request.

Part No. HG300 - 10 (right) - (Material Code No.)

Part No. HG300 - 11 (left) - (Material Code No.)



PLASTIC HINGES

Available in the following material:

Material Code No.	Material Name
-113	Polypropylene, 40% Glass-filled, (black)
-116	Polypropylene, 40% Glass-filled, (white)
-824	Isoplast™, 30% Short Glass Fiber, (natural)
-825	Isoplast™, 30% Short Glass Fiber, (black)
-826	Isoplast™, 30% Short Glass Fiber, (white)

Handles are also available in a variety of colors.

Part No. HG200 - (Size Code No.) - (Material Code No.)

Size Code No.	Hinge Description
-10	No Holes
-20	1/4" Dia. Holes
-30	Countersunk Holes

