

MOLDED NUTS - MH Series

See Craftech Industries' J Series on page 104, K Series on page 105 and L Series on page 106 for additional MOLDED NUTS.
For Nylon 6/6 MOLDED NUTS, see pages 109-115.

*Available in other materials. See material list in index.
Other sizes available on request.
Dimensions may vary with material.

*Available in the following materials:

Material Code

No.	Material Name
-6	Ultem® 2300, (black)
-48	Ryton®, PPS, 40% Short Glass-filled
-74	Isoplast™, 40% Long Glass Fiber, (natural)

Material Code

No.	Material Name
-77	Ultem® 2300, (natural)
-81	Isoplast™, 40% Long Glass Fiber, (gray)
-108	Polypropylene, 30% Glass-filled
-228	Radel® AG330, 30% Glass-filled

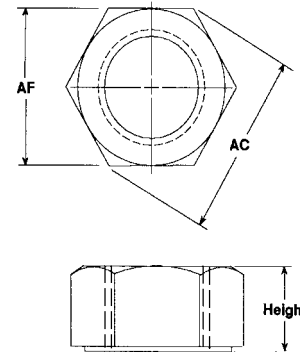
Material Code

No.	Material Name
-520	PPS, 30% Carbon Fiber, (black)
-820	Isoplast™, 30% Short Glass Fiber, (gray)
-824	Isoplast™, 30% Short Glass Fiber, (natural)

MOLDED HEX NUTS

Part No. MHX1800 - (Size Code No.) - (Material Code No.)

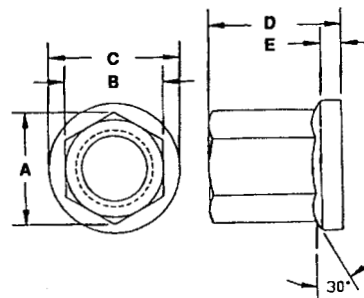
Size Code No.	Thread Size	AF	AC	Height	Size Code No.	Thread Size	AF	AC	Height
-1	4-40	1/4	0.289	0.098	-13	1/2-13	3/4	0.866	7/16
-2	4-48	1/4	0.289	0.098	-14	1/2-20	3/4	0.866	7/16
-3	6-32	5/16	0.361	0.114	-15	5/8-11	15/16	1.083	35/64
-4	8-32	11/32	0.397	0.130	-16	5/8-18	15/16	1.083	35/64
-5	10-32	3/8	0.433	0.130	-17	3/4-10	1 1/8	1.299	41/64
-6	10-24	3/8	0.433	0.130	-18	3/4-16	1 1/8	1.299	41/64
-7	1/4-20	7/16	0.505	7/32	-19	7/8-9	15/16	1.516	3/4
-8	1/4-28	7/16	0.505	7/32	-20	7/8-14	15/16	1.516	3/4
-9	5/16-18	1/2	0.577	17/64	-21	1-8	1 1/2	1.732	55/64
-10	5/16-24	1/2	0.577	17/64	-22	1-12	1 1/2	1.732	55/64
-11	3/8-16	9/16	0.650	21/64	-23	1-14	1 1/2	1.732	55/64
-12	3/8-24	9/16	0.650	21/64					



MOLDED FLANGED NUTS

Part No. MHX1700 - (Size Code No.) - (Material Code No.)

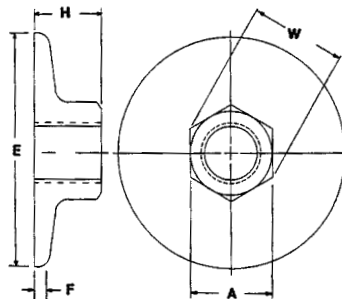
Size Code No.	Thread Size	A	B	C	D	E
-1	3/8-16	.635	.555	.745	.750	.120
-2	3/8-24	.635	.555	.745	.750	.120
-5	1/2-13	.840	.730	1.000	.855	.130
-6	1/2-20	.840	.730	1.000	.855	.130
-7	5/8-11	1.050	.920	1.250	1.220	.130
-9	3/4-10	1.285	1.120	1.950	1.590	.130
-12	1-8	1.750	1.475	2.000	1.750	.188



MOLDED CLAMP NUTS

Part No. MHC18001 - (Size Code No.) - (Material Code No.)

Size Code No.	Thread Size	Size Code No.	Thread Size
-1	3/8-16	-6	1/2-20
-2	3/8-24	-7	1/4NPT
-3	7/16-14	-8	3/8NPT
-4	7/16-20	-10	1/4NPS
-5	1/2-13	-11	3/8NPS



A W H F E
1.00 1.35 .605 .187 2.00
Tolerance on all dimensions +/- .050

MOLDED NUTS - J Series

See *Craftech Industries' MH Series on page 103, K Series on page 105 and L Series on page 106 for additional MOLDED NUTS. For Nylon 6/6 MOLDED NUTS, see pages 109-115.*

*Available in other materials. See material list in index.
Other sizes available on request.
Dimensions may vary with material.

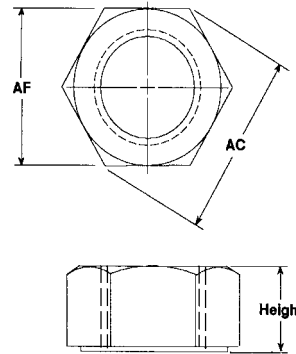
*Available in the following materials:

Material Code No.	Material Name	Material Code No.	Material Name	Material Code No.	Material Name
-5	Ultem® 1000	-60	Nylon 6/6, 30% Short Glass-filled	-226	Radel® A200, Polyethersulfone
-14	ABS	-90	PEEK®, 30% Short Glass-filled, (natural)	-229	Radel® R5000, Polyphenylsulfone
-35	Noryl®	-194	Nylon 46, 30% Glass-filled, Heat Stabilized	-231	Radel® R5100 NT15, Polyphenylsulfone
-46	Polycarbonate, (clear)	-195	Nylon 46, 30% Glass-filled, Heat Stabilized, Fire Retardant		

MOLDED HEX NUTS

Part No. J400 - (Size Code No.) - (Material Code No.)

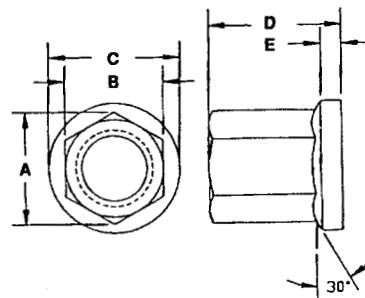
Size Code No.	Thread Size	AF	AC	Height	Size Code No.	Thread Size	AF	AC	Height
-1	4-40	1/4	0.289	0.098	-13	1/2-13	3/4	0.866	7/16
-2	4-48	1/4	0.289	0.098	-14	1/2-20	3/4	0.866	7/16
-3	6-32	5/16	0.361	0.114	-15	5/8-11	15/16	1.083	35/64
-4	8-32	11/32	0.397	0.130	-16	5/8-18	15/16	1.083	35/64
-5	10-32	3/8	0.433	0.130	-17	3/4-10	1 1/8	1.299	41/64
-6	10-24	3/8	0.433	0.130	-18	3/4-16	1 1/8	1.299	41/64
-7	1/4-20	7/16	0.505	7/32	-19	7/8-9	1 5/16	1.516	3/4
-8	1/4-28	7/16	0.505	7/32	-20	7/8-14	1 5/16	1.516	3/4
-9	5/16-18	1/2	0.577	17/64	-21	1-8	1 1/2	1.732	55/64
-10	5/16-24	1/2	0.577	17/64	-22	1-12	1 1/2	1.732	55/64
-11	3/8-16	9/16	0.650	21/64	-23	1-14	1 1/2	1.732	55/64
-12	3/8-24	9/16	0.650	21/64					



MOLDED FLANGED NUTS

Part No. J401 - (Size Code No.) - (Material Code No.)

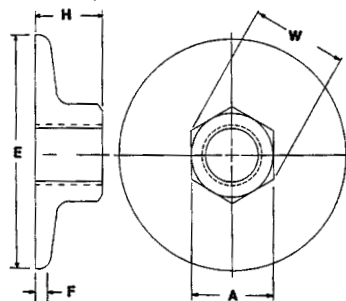
Size Code No.	Thread Size	A	B	C	D	E
-1	3/8-16	.635	.555	.745	.750	.120
-2	3/8-24	.635	.555	.745	.750	.120
-5	1/2-13	.840	.730	1.000	.855	.130
-6	1/2-20	.840	.730	1.000	.855	.130
-7	5/8-11	1.050	.920	1.250	1.220	.130
-9	3/4-10	1.285	1.120	1.950	1.590	.130
-12	1-8	1.750	1.475	2.000	1.750	.188



MOLDED CLAMP NUTS

Part No. J402 - (Size Code No.) - (Material Code No.)

Size Code No.	Thread Size	Size Code No.	Thread Size
-1	3/8-16	-6	1/2-20
-2	3/8-24	-7	1/4NPT
-3	7/16-14	-8	3/8NPT
-4	7/16-20	-10	1/4NPS
-5	1/2-13	-11	3/8NPS



A W H F E
1.00 1.35 .605 .187 2.00
Tolerance on all dimensions +/- .050

MOLDED NUTS - K Series

See Craftech Industries' MH Series on page 103, J Series on page 104 and L Series on page 106 for additional MOLDED NUTS.
For Nylon 6/6 MOLDED NUTS, see pages 109-115.

*Available in other materials. See material list in index.
Other sizes available on request.
Dimensions may vary with material.

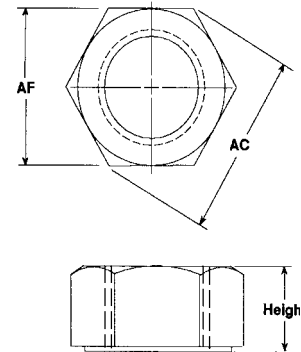
*Available in the following materials:

Material Code No.	Material Name	Material Code No.	Material Name
-11	Polypropylene	-37	PVDF
-24	Delrin®	-41	Halar®
-25	Delrin® AF		

MOLDED HEX NUTS

Part No. K400 - (Size Code No.) - (Material Code No.)

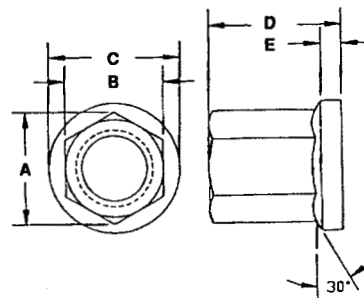
Size Code No.	Thread Size	AF	AC	Height	Size Code No.	Thread Size	AF	AC	Height
-1	4-40	1/4	0.289	0.098	-13	1/2-13	3/4	0.866	7/16
-2	4-48	1/4	0.289	0.098	-14	1/2-20	3/4	0.866	7/16
-3	6-32	5/16	0.361	0.114	-15	5/8-11	15/16	1.083	35/64
-4	8-32	11/32	0.397	0.130	-16	5/8-18	15/16	1.083	35/64
-5	10-32	3/8	0.433	0.130	-17	3/4-10	1 1/8	1.299	41/64
-6	10-24	3/8	0.433	0.130	-18	3/4-16	1 1/8	1.299	41/64
-7	1/4-20	7/16	0.505	7/32	-19	7/8-9	15/16	1.516	3/4
-8	1/4-28	7/16	0.505	7/32	-20	7/8-14	15/16	1.516	3/4
-9	5/16-18	1/2	0.577	17/64	-21	1-8	1 1/2	1.732	55/64
-10	5/16-24	1/2	0.577	17/64	-22	1-12	1 1/2	1.732	55/64
-11	3/8-16	9/16	0.650	21/64	-23	1-14	1 1/2	1.732	55/64
-12	3/8-24	9/16	0.650	21/64					



MOLDED FLANGED NUTS

Part No. K401 - (Size Code No.) - (Material Code No.)

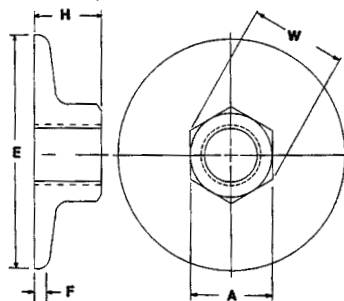
Size Code No.	Thread Size	A	B	C	D	E
-1	3/8-16	.635	.555	.745	.750	.120
-2	3/8-24	.635	.555	.745	.750	.120
-5	1/2-13	.840	.730	1.000	.855	.130
-6	1/2-20	.840	.730	1.000	.855	.130
-7	5/8-11	1.050	.920	1.250	1.220	.130
-9	3/4-10	1.285	1.120	1.950	1.590	.130
-12	1-8	1.750	1.475	2.000	1.750	.188



MOLDED CLAMP NUTS

Part No. K402 - (Size Code No.) - (Material Code No.)

Size Code No.	Thread Size	Size Code No.	Thread Size
-1	3/8-16	-6	1/2-20
-2	3/8-24	-7	1/4NPT
-3	7/16-14	-8	3/8NPT
-4	7/16-20	-10	1/4NPS
-5	1/2-13	-11	3/8NPS



A W H F E
1.00 1.35 .605 .187 2.00
Tolerance on all dimensions +/- .050

MOLDED NUTS - L Series

See *Craftech Industries' MH Series on page 103, J Series on page 104 and K Series on page 105 for additional MOLDED NUTS*
 For Nylon 6/6 MOLDED NUTS, see pages 109-115.

*Available in other materials. See material list in index.
 Other sizes available on request.
 Dimensions may vary with material.

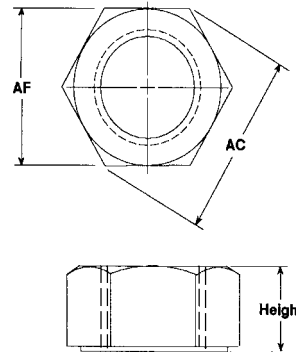
*Available in the following materials:

Material Code No.	Material Name
-15	PEEK™

MOLDED HEX NUTS

Part No. L400 - (Size Code No.) - (Material Code No.)

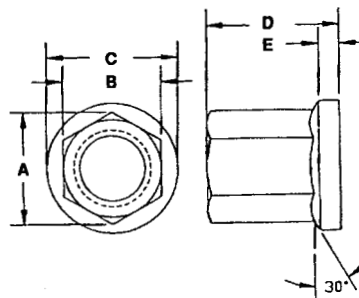
Size Code No.	Thread Size	AF	AC	Height	Size Code No.	Thread Size	AF	AC	Height
-1	4-40	1/4	0.289	0.098	-13	1/2-13	3/4	0.866	7/16
-2	4-48	1/4	0.289	0.098	-14	1/2-20	3/4	0.866	7/16
-3	6-32	5/16	0.361	0.114	-15	5/8-11	15/16	1.083	35/64
-4	8-32	11/32	0.397	0.130	-16	5/8-18	15/16	1.083	35/64
-5	10-32	3/8	0.433	0.130	-17	3/4-10	1 1/8	1.299	41/64
-6	10-24	3/8	0.433	0.130	-18	3/4-16	1 1/8	1.299	41/64
-7	1/4-20	7/16	0.505	7/32	-19	7/8-9	1 5/16	1.516	3/4
-8	1/4-28	7/16	0.505	7/32	-20	7/8-14	1 5/16	1.516	3/4
-9	5/16-18	1/2	0.577	17/64	-21	1-8	1 1/2	1.732	55/64
-10	5/16-24	1/2	0.577	17/64	-22	1-12	1 1/2	1.732	55/64
-11	3/8-16	9/16	0.650	21/64	-23	1-14	1 1/2	1.732	55/64
-12	3/8-24	9/16	0.650	21/64					



MOLDED FLANGED NUTS

Part No. L401 - (Size Code No.) - (Material Code No.)

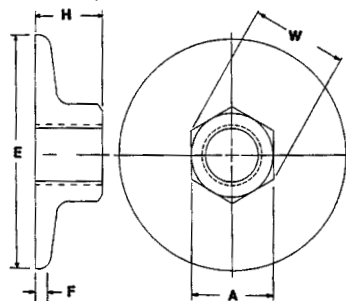
Size Code No.	Thread Size	A	B	C	D	E
-1	3/8-16	.635	.555	.745	.750	.120
-2	3/8-24	.635	.555	.745	.750	.120
-5	1/2-13	.840	.730	1.000	.855	.130
-6	1/2-20	.840	.730	1.000	.855	.130
-7	5/8-11	1.050	.920	1.250	1.220	.130
-9	3/4-10	1.285	1.120	1.950	1.590	.130
-12	1-8	1.750	1.475	2.000	1.750	.188



MOLDED CLAMP NUTS

Part No. L402 - (Size Code No.) - (Material Code No.)

Size Code No.	Thread Size	Size Code No.	Thread Size
-1	3/8-16	-6	1/2-20
-2	3/8-24	-7	1/4NPT
-3	7/16-14	-8	3/8NPT
-4	7/16-20	-10	1/4NPS
-5	1/2-13	-11	3/8NPS



A W H F E
 1.00 1.35 .605 .187 2.00
 Tolerance on all dimensions +/- .050

MOLDED METRIC HEX NUTS

For Nylon 6/6 MOLDED NUTS, see pages 109-115.

*Available in other materials. See material list in index.
Other sizes available on request.
Dimensions may vary with material.

MH Series

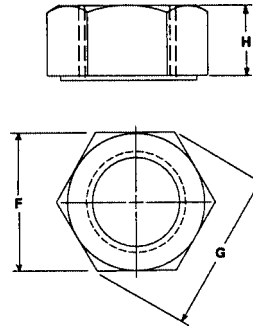
*Available in the following materials:

Material Code No.	Material Name	Material Code No.	Material Name	Material Code No.	Material Name
-6	Ultem® 2300, (black)	-77	Ultem® 2300, (natural)	-520	PPS, 30% Carbon Fiber, (black)
-48	Ryton®, PPS, 40% Short Glass-filled	-81	Isoplast™, 40% Long Glass Fiber, (gray)	-820	Isoplast™, 30% Short Glass Fiber, (gray)
-74	Isoplast™, 40% Long Glass Fiber, (natural)	-108	Polypropylene, 30% Glass-filled	-824	Isoplast™, 30% Short Glass Fiber, (natural)
		-228	Radel® AG330, 30% Glass-filled		

MOLDED METRIC HEX NUTS

Part No. MHX2000 - (Size Code No.) - (Material Code No.)

Size Code No.	Thread Size	F	G	H
-7	M6 x 1.00	9.78 - 10	min. 11.05	4.9 - 5.2
-8	M8 x 1.25	12.73 - 13	min. 14.38	7.5 - 7.14
-9	M10 x 1.50	15.73 - 16	min. 17.77	8.94 - 9.3
-10	M12 x 1.75	17.73 - 18	min. 20.03	11.57 - 12



J Series

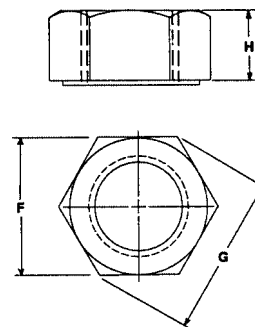
*Available in the following materials:

Material Code No.	Material Name	Material Code No.	Material Name	Material Code No.	Material Name
-5	Ultem® 1000	-60	Nylon 6/6, 30% Short Glass-filled	-226	Radel® A200, Polyethersulfone
-14	ABS	-90	PEEK™, 30% Short Glass-filled, (natural)	-229	Radel® R5000, Polyphenylsulfone
-35	Noryl®	-194	Nylon 46, 30% Glass-filled, Heat Stabilized	-231	Radel® R5100 NT15, Polyphenylsulfone
-46	Polycarbonate, (clear)	-195	Nylon 46, 30% Glass-filled, Heat Stabilized, Fire Retardant		

MOLDED METRIC HEX NUTS

Part No. J2000 - (Size Code No.) - (Material Code No.)

Size Code No.	Thread Size	F	G	H
-7	M6 x 1.00	9.78 - 10	min. 11.05	4.9 - 5.2
-8	M8 x 1.25	12.73 - 13	min. 14.38	7.5 - 7.14
-9	M10 x 1.50	15.73 - 16	min. 17.77	8.94 - 9.3
-10	M12 x 1.75	17.73 - 18	min. 20.03	11.57 - 12



MOLDED METRIC HEX NUTS (continued)

K Series

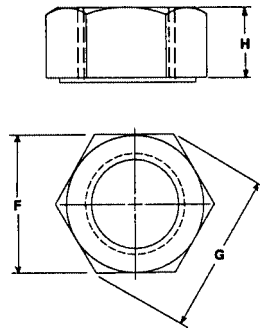
*Available in the following materials:

Material Code No.	Material Name	Material Code No.	Material Name
-11	Polypropylene	-37	PVDF
-24	Delrin®	-41	Halar®
-25	Delrin® AF		

MOLDED METRIC HEX NUTS

Part No. K2000 - (Size Code No.) - (Material Code No.)

Size Code No.	Thread Size	F	G	H
-7	M6 x 1.00	9.78 - 10	min. 11.05	4.9 - 5.2
-8	M8 x 1.25	12.73 - 13	min. 14.38	7.5 - 7.14
-9	M10 x 1.50	15.73 - 16	min. 17.77	8.94 - 9.3
-10	M12 x 1.75	17.73 - 18	min. 20.03	11.57 - 12



L Series

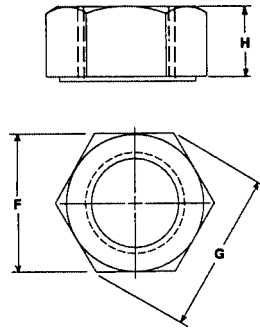
*Available in the following materials:

Material Code No.	Material Name
-15	PEEK™

MOLDED METRIC HEX NUTS

Part No. L2000 - (Size Code No.) - (Material Code No.)

Size Code No.	Thread Size	F	G	H
-7	M6 x 1.00	9.78 - 10	min. 11.05	4.9 - 5.2
-8	M8 x 1.25	12.73 - 13	min. 14.38	7.5 - 7.14
-9	M10 x 1.50	15.73 - 16	min. 17.77	8.94 - 9.3
-10	M12 x 1.75	17.73 - 18	min. 20.03	11.57 - 12



MOLDED NYLON NUTS and POLYCARBONATE NUTS

*Available in the following materials:

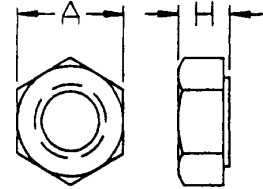
Material Code No.	Material Name
-18	Nylon 6/6, (natural)
-78	Nylon 6/6, (black)

*Available in other materials. See materials list in index.
Other sizes available on request.

NYLON HEX NUT

Part No. G100 - (Size Code No.) - (Material Code No.)

Size Code No.	Thread Size	A	H	Size Code No.	Thread Size	A	H
-1	2-56	.180	.070	-14	3/8-24	.560	.330
-2	3-48	.180	.070	-140	3/8-32	.560	.330
-3	4-40	.250	.100	-1400	7/16-14	.685	.380
-4	6-32	.305	.120	-15	7/16-24	.685	.380
-5	6-40	.305	.120	-16	7/16-20	.685	.380
-6	8-32	.335	.130	-17	1/2-13	.750	.430
-7	10-24	.365	.135	-18	1/2-20	.750	.430
-8	10-32	.365	.135	-19	5/8-11	.925	.550
-9	12-24	.425	.207	-20	5/8-18	.925	.550
-10	1/4-20	.433	.233	-200	11/16-27	1.00	.250
-11	1/4-28	.433	.235	-21	3/4-10	1.10	.640
-12	5/16-18	.500	.270	-22	7/8-9	1.28	.750
-120	5/16-24	.500	.270	-23	1-8	1.47	.870
-13	3/8-16	.560	.330				



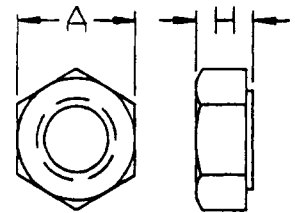
Tolerance on all dimensions +/- .010

NYLON SPECIAL HEX NUT

(G101's are thicker than G100's.)

Part No. G101 - (Size Code No.) - (Material Code No.)

Size Code No.	Thread Size	A	H	Size Code No.	Thread Size	A	H
-1	2-56	.180	.090	-1	2-56	.180	.090
-2	4-40	.250	.124	-2	4-40	.250	.124
-3	6-32	.305	.146	-3	6-32	.305	.146
-4	8-32	.340	.170	-4	8-32	.340	.170
-5	10-24	.365	.196	-5	10-24	.365	.196
-6	10-32	.365	.196	-6	10-32	.365	.196
-7	1/4-20	.425	.258	-7	1/4-20	.425	.258

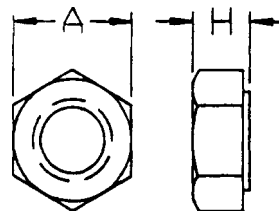


Tolerance on all dimensions +/- .010

POLYCARBONATE HEX NUT

Part No. GP100 - (Size Code No.) - (Material Code No.)

Size Code No.	Thread Size	A	H
-3	2-56	.180	.090
-4	6-32	.305	.120
-6	8-32	.335	.130
-8	10-32	.365	.135



Tolerance on all dimensions +/- .010

MOLDED NYLON NUTS (continued)

*Available in the following materials:

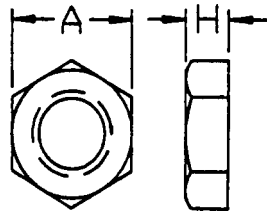
Material Code No.	Material Name
-18	Nylon 6/6, (natural)
-78	Nylon 6/6, (black)

*Available in other materials. See materials list in index.
Other sizes available on request.

NYLON HEX JAM NUT

Part No. G102 - (Size Code No.) - (Material Code No.)

Size Code No.	Thread Size	A	H
-1	5/16-18	.500	.190
-2	5/16-24	.500	.190
-3	3/8-16	.500	.125
-30	3/8-16	.670	.218
-4	3/8-24	.500	.125
-5	3/8-32	.500	.125
-6	7/16-14	.687	.375
-7	7/16-20	.687	.250
-70	15/32-32	.625	.125
-8	1/2-13	.687	.220
-9	1/2-24	.687	.220
-10	1/2-28	.660	.125
-100	9/16-18	.750	.250
-1000	9/16-24	.750	.250
-1001	5/8-11	.930	.375
-101	5/8-18	.937	.375
-11	3/4-10	1.12	.250
-110	3/4-16	1.12	.250
-12	3/4-27	1.00	.125
-120	7/8-14	1.25	.340
-1200	7/8-20	1.00	.125
-121	1-8	1.48	.410
-1210	1/8-27 NPT	.560	.110
-122	1/4-18 NPT	.740	.187
-13	3/8-18 NPT	1.00	.280
-14	1/2-14 NPT	1.25	.340
-15	3/4-14 NPT	1.48	.410
-150	1/4-18 NPS	.687	.225
-16	3/8-18 NPS	1.00	.280
-17	1/2-14 NPS	1.25	.340
-18	3/4-14 NPS	1.48	.410

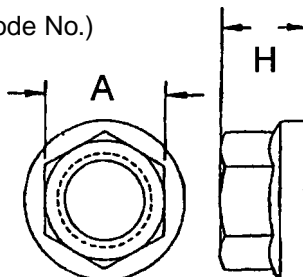


Tolerance on all dimensions +/- .010

NYLON HEX FLANGE NUT

Part No. G113 - (Size Code No.) - (Material Code No.)

Size Code No.	Thread Size	A	H
-1	10-32	.364	.208
-2	1/4-20	.428	.226



Tolerance on all dimensions +/- .010

MOLDED NYLON NUTS (continued)

*Available in the following materials:

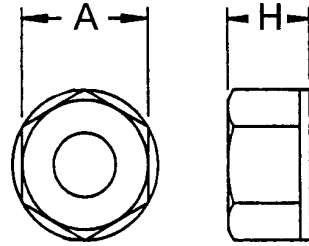
Material Code No.	Material Name
-18	Nylon 6/6, (natural)
-78	Nylon 6/6, (black)

*Available in other materials. See materials list in index.
Other sizes available on request.

NYLON LOCK NUT
SELF-THREADING

Part No. **G103** - (Size Code No.) - (Material Code No.)

Size Code No.	Thread Size	A	H
-1	2-56	.180	.140
-2	4-40	.250	.200
-3	6-32	.305	.200
-4	8-32	.335	.230
-5	10-24	.365	.250
-6	10-32	.365	.250
-7	1/4-20	.425	.275

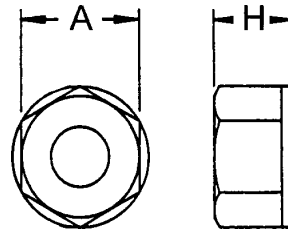


Tolerance on all dimensions +/- .010

NYLON LOCK NUT

Part No. **G104** - (Size Code No.) - (Material Code No.)

Size Code No.	Thread Size	A	H
-1	2-56	.180	.140
-2	4-40	.250	.200
-3	6-32	.305	.200
-4	8-32	.335	.230
-5	10-24	.365	.250
-6	10-32	.365	.250
-7	1/4-20	.425	.275

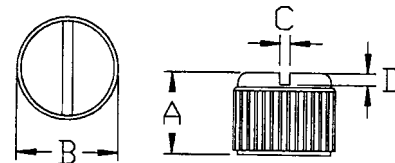


Tolerance on all dimensions +/- .010

NYLON SLOTTED THUMB NUT

Part No. **G105** - (Size Code No.) - (Material Code No.)

Size Code No.	Thread Size	A	B	C	D
-1	4-40	.280	.317	.039	.045
-2	6-32	.334	.348	.044	.051
-3	8-32	.378	.381	.049	.059
-4	10-24	.357	.400	.056	.068
-5	10-32	.357	.400	.056	.068
-6	1/4-20	.370	.478	.070	.088



Tolerance on all dimensions +/- .010

MOLDED NYLON NUTS (continued)

*Available in the following materials:

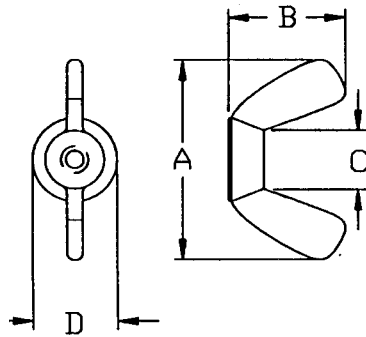
Material Code No.	Material Name
-18	Nylon 6/6, (natural)
-78	Nylon 6/6, (black)

*Available in other materials. See materials list in index.
Other sizes available on request.

NYLON WING NUT

Part No. **G107** - (Size Code No.) - (Material Code No.)

Size Code No.	Thread Size	A	B	C	D
-1	4-40	.90	.48	.23	.40
-2	6-32	.90	.48	.23	.40
-3	8-32	.90	.48	.23	.40
-4	10-24	.90	.48	.23	.40
-5	10-32	.90	.48	.23	.40
-6	10-24	1.10	.63	.30	.56
-7	10-32	1.10	.63	.30	.56
-8	1/4-20	1.10	.63	.30	.56
-9	1/4-28	1.10	.63	.30	.56
-10	1/4-20	1.36	.71	.36	.65
-11	1/4-28	1.36	.71	.36	.65
-12	5/16-18	1.38	.72	.36	.65
-13	3/8-16	1.38	.72	.36	.65
-130	3/8-24	.140	.720	.36	.64
-14	7/16-14	1.76	.90	.58	.85
-15	1/2-13	1.76	.90	.58	.85
-16	9/16-12	1.76	.90	.58	.85

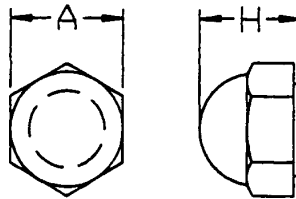


Tolerance on all dimensions +/- .010

NYLON CAP NUT

Part No. **GN106** - (Size Code No.) - (Material Code No.)

Size Code No.	Thread Size	A	H
-1	4-40	.250	.280
-2	6-32	.305	.345
-3	8-32	.330	.375
-4	10-24	.365	.400
-5	10-32	.365	.400
-6	1/4-20	.425	.475
-7	1/4-28	.425	.475
-8	5/16-18	.500	.530
-80	5/16-24	.500	.530
-9	3/8-16	.560	.620
-90	3/8-24	.560	.620
-10	1/2-13	.750	.810
-100	1/2-20	.750	.810
-11	5/8-11	.935	.970



Tolerance on all dimensions +/- .010

*Available in the following materials:

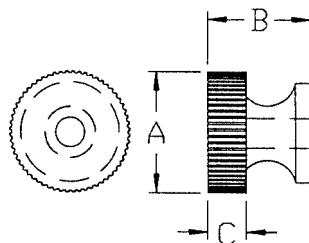
Material Code No.	Material Name
-18	Nylon 6/6, (natural)
-78	Nylon 6/6, (black)

*Available in other materials. See materials list in index.
Other sizes available on request.

NYLON KNURLED THUMB NUTS

Part No. G108 - (Size Code No.) - (Material Code No.)

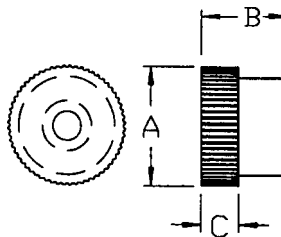
Size Code No.	Thread Size	A	B	C
-1	4-40	.300	.280	.125
-2	6-32	.360	.275	.125
-3	8-32	.425	.305	.140
-4	10-24	.425	.325	.140
-5	10-32	.425	.325	.140
-6	1/4-20	.540	.365	.155
-7	5/16-18	.612	.400	.170
-8	5/16-24	.612	.400	.170



Tolerance on all dimensions +/- .010

Part No. G109 - (Size Code No.) - (Material Code No.)

Size Code No.	Thread Size	A	B	C
-1	4-40	.300	.280	.120
-2	6-32	.360	.275	.125
-3	8-32	.425	.305	.140
-4	10-24	.425	.325	.140
-5	10-32	.425	.325	.140
-6	1/4-20	.540	.365	.155
-7	5/16-18	.612	.385	.171
-8	3/8-16	.687	.430	.187
-9	1/2-13	.750	.768	.203



Tolerance on all dimensions +/- .010

MOLDED NYLON METRIC NUTS

*Available in the following materials:

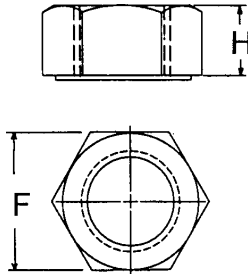
Material Code No.	Material Name
-18	Nylon 6/6, (natural)
-78	Nylon 6/6, (black)

*Available in other materials. See materials list in index.
Other sizes available on request.

NYLON METRIC HEX NUTS

Part No. GM114 - (Size Code No.) - (Material Code No.)

Size Code No.	Thread Size	F	H
-1	M2 x 0,4	3,90	1,20
-2	M2,5 x 0,45	4,90	1,80
-3	M3 x 0,5	5,40	2,20
-4	M3,5 x 0,6	6,90	2,70
-5	M4 x 0,7	6,90	3,00
-6	M5 x 0,8	7,90	4,30
-7	M6 x 1,0	10,00	5,40
-8	M8 x 1,25	12,90	6,40
-9	M10 x 1,50	14,80	9,80
-10	M12 x 1,75	17,74	10,54

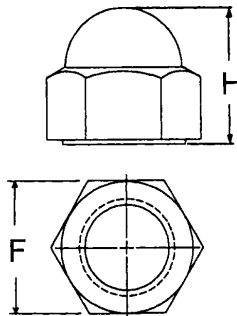


Tolerance on all dimensions +/- .26mm

NYLON METRIC CAP NUTS

Part No. GM115 - (Size Code No.) - (Material Code No.)

Size Code No.	Thread Size	F	H
-1	M4 x 0,70	7,00	8,00
-2	M5 x 0,80	8,00	10,00
-3	M6 x 1,00	10,00	12,00
-4	M8 x 1,25	13,00	15,00
-5	M10 x 1,50	17,00	18,00
-6	M12 x 1,75	18,90	20,50
-7	M16 x 2,00	23,70	24,80
-8	M20 x 2,50	26,70	29,10



Tolerance on all dimensions +/- .26mm

MOLDED NYLON METRIC NUTS (continued)

*Available in the following materials:

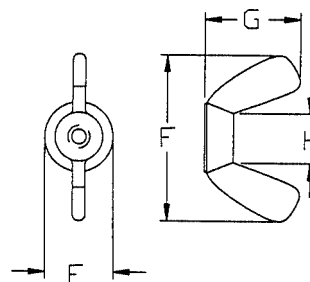
Material Code No.	Material Name
-18	Nylon 6/6, (natural)
-78	Nylon 6/6, (black)

*Available in other materials. See materials list in index.
Other sizes available on request.

NYLON METRIC WING NUTS

Part No. GM118 - (Size Code No.) - (Material Code No.)

Size Code No.	Thread Size	F	G	H	E
-100	M3 x 0,50	22,90	12,20	5,80	10,20
-1	M4 x 0,70	22,80	12,20	5,80	10,20
-2	M5 x 0,80	22,80	12,20	5,80	10,20
-3	M6 x 1,00	28,00	16,00	7,60	14,20
-4	M8 x 1,25	35,10	18,30	9,10	16,50
-5	M10 x 1,50	35,10	18,30	9,10	16,50
-6	M12 x 1,70	44,70	22,70	15,00	21,10

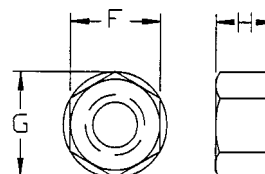


Tolerance on all dimensions +/- .26mm

NYLON METRIC LOCK NUTS

Part No. GM119 - (Size Code No.) - (Material Code No.)

Size Code No.	Thread Size	F	H
-1	M6 x 1,00	10,90	6,70



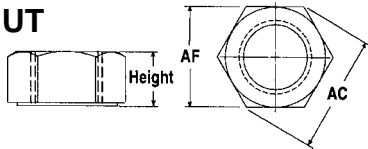
Tolerance on all dimensions +/- .26mm

MOLDED ACME NUTS

MH Series

Material Code No.	Material Name	Material Code No.	Material Name	Material Code No.	Material Name
-6	Ultem® 2300, (black)	-77	Ultem® 2300, (natural)	-520	PPS, 30% Carbon Fiber, (black)
-48	Ryton®, PPS, 40% Short Glass-filled	-81	Isoplast™, 40% Long Glass Fiber, (gray)	-820	Isoplast™, 30% Short Glass Fiber, (gray)
-74	Isoplast™, 40% Long Glass Fiber, (natural)	-108	Polypropylene, 30% Glass-filled	-824	Isoplast™, 30% Short Glass Fiber, (natural)
		-228	Radel® AG330, 30% Glass-filled		

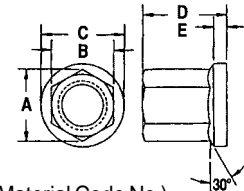
ACME HEX NUT



Part No. MHX2300 - (Size Code No.) - (Material Code No.)

Size Code No.	Size	AF	AC	Height
-1	1/4-12	7/16	0.505	7/32
-2	3/8-12	9/16	0.650	21/64
-3	3/8-8	9/16	0.650	21/64
-4	1/2-10	3/4	0.840	7/16
-5	1/2-5	3/4	0.840	7/16
-6	5/8-8	15/16	1.083	35/64
-7	5/8-5	15/16	1.083	35/64
-8	3/4-6	1-1/8	1.299	41/64
-9	3/4-10	1-1/8	1.299	41/64
-10	1-4	1-1/2	1.732	55/64
-11	1-5	1-1/2	1.732	55/64
-12	1-6	1-1/2	1.732	55/64
-13	1-10	1-1/2	1.732	55/64

ACME FLANGED NUT



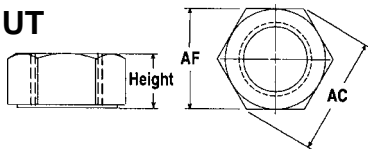
Part No. MHX2200 - (Size Code No.) - (Material Code No.)

Size Code No.	Size	A	B	C	D	E
-1	3/8-12	.635	.555	.745	.750	.120
-2	3/8-8	.635	.555	.745	.750	.120
-3	1/2-10	.840	.730	1.000	.855	.130
-4	1/2-5	.840	.730	1.000	.855	.130
-5	5/8-8	1.050	.920	1.250	1.220	.130
-6	5/8-5	1.050	.920	1.250	1.220	.130
-7	3/4-6	1.285	1.120	1.950	1.590	.130
-8	3/4-10	1.285	1.120	1.950	1.590	.130
-9	1-4	1.750	1.475	2.000	1.750	.188
-10	1-5	1.750	1.475	2.000	1.750	.188
-11	1-6	1.750	1.475	2.000	1.750	.188
-12	1-10	1.750	1.475	2.000	1.750	.188

J Series

Material Code No.	Material Name	Material Code No.	Material Name	Material Code No.	Material Name
-5	Ultem® 1000	-60	Nylon 6/6, 30% Short Glass-filled	-226	Radel® A200, Polyethersulfone
-14	ABS	-90	PEEK™, 30% Short Glass-filled, (natural)	-229	Radel® R5000, Polyphenylsulfone
-35	Noryl®	-194	Nylon 46, 30% Glass-filled, Heat Stabilized	-231	Radel® R5100 NT15, Polyphenylsulfone
-46	Polycarbonate, (clear)	-195	Nylon 46, 30% Glass-filled, Heat Stabilized, Fire Retardant		

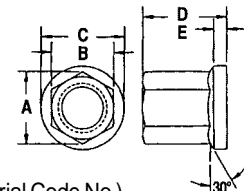
ACME HEX NUT



Part No. J2300 - (Size Code No.) - (Material Code No.)

Size Code No.	Size	AF	AC	Height
-1	1/4-12	7/16	0.505	7/32
-2	3/8-12	9/16	0.650	21/64
-3	3/8-8	9/16	0.650	21/64
-4	1/2-10	3/4	0.840	7/16
-5	1/2-5	3/4	0.840	7/16
-6	5/8-8	15/16	1.083	35/64
-7	5/8-5	15/16	1.083	35/64
-8	3/4-6	1-1/8	1.299	41/64
-9	3/4-10	1-1/8	1.299	41/64
-10	1-4	1-1/2	1.732	55/64
-11	1-5	1-1/2	1.732	55/64
-12	1-6	1-1/2	1.732	55/64
-13	1-10	1-1/2	1.732	55/64

ACME FLANGED NUT



Part No. J2200 - (Size Code No.) - (Material Code No.)

Size Code No.	Size	A	B	C	D	E
-1	3/8-12	.635	.555	.745	.750	.120
-2	3/8-8	.635	.555	.745	.750	.120
-3	1/2-10	.840	.730	1.000	.855	.130
-4	1/2-5	.840	.730	1.000	.855	.130
-5	5/8-8	1.050	.920	1.250	1.220	.130
-6	5/8-5	1.050	.920	1.250	1.220	.130
-7	3/4-6	1.285	1.120	1.950	1.590	.130
-8	3/4-10	1.285	1.120	1.950	1.590	.130
-9	1-4	1.750	1.475	2.000	1.750	.188
-10	1-5	1.750	1.475	2.000	1.750	.188
-11	1-6	1.750	1.475	2.000	1.750	.188
-12	1-10	1.750	1.475	2.000	1.750	.188

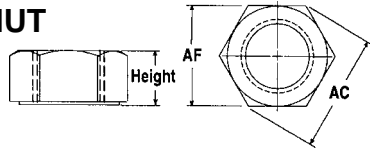
ACME THREADED ROD
can be found on page 237.

MOLDED ACME NUTS (continued)

K Series

Material Code No.	Material Name	Material Code No.	Material Name
-11	Polypropylene	-37	PVDF
-24	Delrin®	-41	Halar®
-25	Delrin® AF		

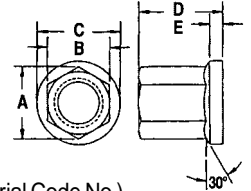
ACME HEX NUT



Part No. **K2300** - (Size Code No.) - (Material Code No.)

Size Code No.	Size	AF	AC	Height
-1	1/4-12	7/16	0.505	7/32
-2	3/8-12	9/16	0.650	21/64
-3	3/8-8	9/16	0.650	21/64
-4	1/2-10	3/4	0.840	7/16
-5	1/2-5	3/4	0.840	7/16
-6	5/8-8	15/16	1.083	35/64
-7	5/8-5	15/16	1.083	35/64
-8	3/4-6	1-1/8	1.299	41/64
-9	3/4-10	1-1/8	1.299	41/64
-10	1-4	1-1/2	1.732	55/64
-11	1-5	1-1/2	1.732	55/64
-12	1-6	1-1/2	1.732	55/64
-13	1-10	1-1/2	1.732	55/64

ACME FLANGED NUT



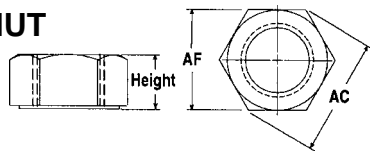
Part No. **K2200** - (Size Code No.) - (Material Code No.)

Size Code No.	Size	A	B	C	D	E
-1	3/8-12	.635	.555	.745	.750	.120
-2	3/8-8	.635	.555	.745	.750	.120
-3	1/2-10	.840	.730	1.000	.855	.130
-4	1/2-5	.840	.730	1.000	.855	.130
-5	5/8-8	1.050	.920	1.250	1.220	.130
-6	5/8-5	1.050	.920	1.250	1.220	.130
-7	3/4-6	1.285	1.120	1.950	1.590	.130
-8	3/4-10	1.285	1.120	1.950	1.590	.130
-9	1-4	1.750	1.475	2.000	1.750	.188
-10	1-5	1.750	1.475	2.000	1.750	.188
-11	1-6	1.750	1.475	2.000	1.750	.188
-12	1-10	1.750	1.475	2.000	1.750	.188

L Series

Material Code No.	Material Name
-15	PEEK™

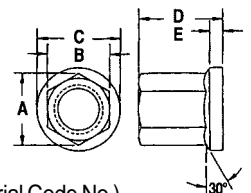
ACME HEX NUT



Part No. **L2300** - (Size Code No.) - (Material Code No.)

Size Code No.	Size	AF	AC	Height
-1	1/4-12	7/16	0.505	7/32
-2	3/8-12	9/16	0.650	21/64
-3	3/8-8	9/16	0.650	21/64
-4	1/2-10	3/4	0.840	7/16
-5	1/2-5	3/4	0.840	7/16
-6	5/8-8	15/16	1.083	35/64
-7	5/8-5	15/16	1.083	35/64
-8	3/4-6	1-1/8	1.299	41/64
-9	3/4-10	1-1/8	1.299	41/64
-10	1-4	1-1/2	1.732	55/64
-11	1-5	1-1/2	1.732	55/64
-12	1-6	1-1/2	1.732	55/64
-13	1-10	1-1/2	1.732	55/64

ACME FLANGED NUT



Part No. **L2200** - (Size Code No.) - (Material Code No.)

Size Code No.	Size	A	B	C	D	E
-1	3/8-12	.635	.555	.745	.750	.120
-2	3/8-8	.635	.555	.745	.750	.120
-3	1/2-10	.840	.730	1.000	.855	.130
-4	1/2-5	.840	.730	1.000	.855	.130
-5	5/8-8	1.050	.920	1.250	1.220	.130
-6	5/8-5	1.050	.920	1.250	1.220	.130
-7	3/4-6	1.285	1.120	1.950	1.590	.130
-8	3/4-10	1.285	1.120	1.950	1.590	.130
-9	1-4	1.750	1.475	2.000	1.750	.188
-10	1-5	1.750	1.475	2.000	1.750	.188
-11	1-6	1.750	1.475	2.000	1.750	.188
-12	1-10	1.750	1.475	2.000	1.750	.188

MACHINED HIGH TECHNOLOGY PLASTIC NUTS

*Available in the following materials:

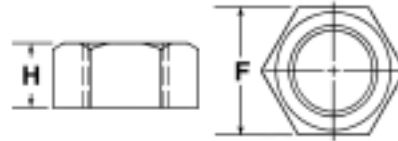
Material Code No.	Material Name	Material Code No.	Material Name	Material Code No.	Material Name	Material Code No.	Material Name
-2	Nylon, 30% Glass-filled (black), UV stabilized	-15	PEEK™	-46	Polycarbonate	-226	Radel® A200, Polyethersulfone
-5	Ultem® 1000	-18	Nylon 6/6, (natural)	-60	Nylon 6/6, 30% Short Glass-filled	-228	Radel® AG330, 30% Glass-filled
-11	Polypropylene	-24	Delrin®	-77	Ultem® 2300, (natural)	-229	Radel® R5000, Polyphenylsulfone
-13	Polyethylene	-32	PCTFE	-194	Nylon 46, 30% Glass-filled, Heat Stabilized		
-14	ABS	-37	PVDF	-195	Nylon 46, 30% Glass-filled, Flame Retardant, Heat Stabilized		
		-40	PFA, (Teflon®)				

*Available in other materials.
Other sizes available on request.

HEX NUTS Made to the American National Standard.

Part No. DF220 - (Size Code No.) - (Material Code No.)

Size Code No.	Thread Size	Size Code No.	Thread Size	Size Code No.	Thread Size
-1	0-80	-12	10-32	-23	1/2-20
-2	1-64	-13	12-24	-24	9/16-18
-3	1-72	-14	1/4-20	-25	5/8-11
-4	2-56	-15	1/4-28	-26	5/8-18
-5	3-48	-16	5/16-18	-27	3/4-10
-6	4-40	-17	5/16-24	-28	3/4-16
-7	5-40	-18	3/8-16	-29	7/8-9
-8	6-32	-19	3/8-24	-30	7/8-14
-9	6-40	-20	7/16-14	-31	1-8
-10	8-32	-21	7/16-20	-32	1-12
-11	10-24	-22	1/2-13	-33	1-14



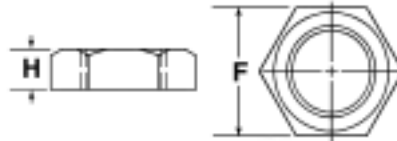
Thread Size	F		H		Thread Size	F		H	
	max.	min.	max.	min.		max.	min.	max.	min.
0	.156	.150	.050	.043	5/16	.500	.489	.273	.258
1	.156	.150	.050	.043	3/8	.562	.551	.337	.320
2	.188	.180	.066	.057	7/16	.688	.675	.385	.365
3	.188	.180	.066	.057	1/2	.750	.736	.448	.427
4	.250	.241	.098	.087	9/16	.875	.861	.496	.473
5	.312	.302	.114	.102	5/8	.938	.922	.559	.535
6	.312	.302	.114	.102	3/4	1.125	1.088	.665	.617
8	.344	.332	.130	.117	7/8	1.312	1.269	.776	.724
10	.375	.362	.130	.117	1	1.500	1.450	.887	.831
12	.438	.423	.161	.148					
1/4	.438	.428	.226	.212					

Tolerances: +/- .015

HEX JAM NUTS Made to the American National Standard.

Part No. DF222 - (Size Code No.) - (Material Code No.)

Size Code No.	Thread Size	Size Code No.	Thread Size	Size Code No.	Thread Size
-1	5/16-18	-9	1/2-24	-18	3/4-14NPT
-2	5/16-24	-10	1/2-28	-19	1/8-27NPS
-3	3/8-16	-11	3/4-10	-20	1/4-18NPS
-4	3/8-24	-12	3/4-27	-21	3/8-18NPS
-5	3/8-32	-14	1/8-27NPT	-22	1/2-14NPS
-6	7/16-14	-15	1/4-18NPT	-23	3/4-14NPS
-7	7/16-20	-16	3/8-18NPT		
-8	1/2-13	-17	1/2-14NPT		



Thread Size	F		H		Thread Size	F	H
	max.	min.	max.	min.			
5/16	.500	.489	.195	.180	1/8-27NPT/NPS	.735	.250
3/8	.562	.551	.227	.210	1/4-18NPT/NPS	.860	.375
7/16	.688	.675	.260	.240	3/8-18NPT/NPS	.985	.375
1/2	.750	.736	.323	.302	1/2-14NPT/NPS	1.235	.500
9/16	.875	.861	.324	.301	3/4-14NPT/NPS	1.485	.500
5/8	.938	.922	.387	.363			
3/4	1.125	1.088	.446	.398			

Tolerances: +/- .015

HEAVY HEX NUTS Made to the American National Standard.

Part Number - (Size Code No.) - (Material Code No.)

Size Code No.	Thread Size	Size Code No.	Thread Size	Size Code No.	Thread Size
-1	1/4-20	-15	3/4-16	-29	1 3/8-12
-2	1/4-28	-16	7/8-9	-30	1 1/2-6
-3	5/16-18	-17	7/8-14	-31	1 1/2-8
-4	5/16-24	-18	1-8	-32	1 1/2-12
-5	3/8-16	-19	1-12	-33	1 5/8-5.5
-6	3/8-24	-20	1-14	-34	1 3/4-5
-7	7/16-14	-21	1 1/8-7	-35	1 3/4-8
-8	7/16-20	-22	1 1/8-8	-36	1 7/8-5
-9	1/2-13	-23	1 1/8-12	-37	2-4
-10	1/2-20	-24	1 1/4-7	-38	2-8
-11	9/16-18	-25	1 1/4-8	-39	2 1/4-6
-12	5/8-11	-26	1 1/4-12	-40	2 1/4-8
-13	5/8-18	-27	1 3/8-6		
-14	3/4-10	-28	1 3/8-8		



Part No. DF205
HEAVY HEX NUT



Part No. DF210
HEAVY HEX JAM NUT



Thread Size	F		H		Heavy Hex Nut		Heavy Hex Jam Nut	
	max.	min.	max.	min.	max.	min.	max.	min.
1/4	.500	.488	.250	.218	.188	.156		
5/16	.562	.546	.314	.280	.220	.186		
3/8	.688	.669	.377	.341	.252	.216		
7/16	.750	.728	.441	.403	.285	.247		
1/2	.875	.850	.504	.464	.317	.277		
9/16	.938	.909	.568	.526	.349	.307		
5/8	1.062	1.031	.631	.587	.381	.337		
3/4	1.250	1.212	.758	.710	.446	.398		
7/8	1.438	1.394	.885	.833	.510	.458		
1	1.625	1.575	1.012	.956	.575	.519		
1 1/8	1.812	1.756	1.139	1.079	.639	.579		
1 1/4	2.000	1.938	1.251	1.187	.751	.687		
1 3/8	2.188	2.119	1.378	1.310	.815	.747		
1 1/2	2.375	2.300	1.505	1.433	.880	.808		
1 5/8	2.562	2.481	1.632	1.556	.944	.868		
1 3/4	2.750	2.662	1.759	1.679	1.009	.929		
1 7/8	2.938	2.844	1.886	1.802	1.073	.989		
2	3.125	3.025	2.013	1.925	1.138	1.050		
2 1/4	3.500	3.388	2.251	2.155	1.251	1.155		

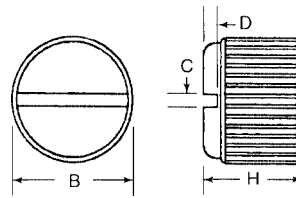
Tolerances: +/- .015

MACHINED HIGH TECHNOLOGY PLASTIC NUTS (continued)

SLOTTED THUMB NUTS

Part No. DF223 - (Size Code No.) - (Material Code No.)

Size Code No.	Thread Size	Size Code No.	Thread Size	Size Code No.	Thread Size
-1	4-40	-10	1/4-28	-16	1/2-20
-3	6-32	-11	5/16-18	-18	5/8-11
-5	8-32	-12	5/16-24	-19	5/8-18
-6	10-24	-13	3/8-16	-20	3/4-10
-7	10-32	-14	3/8-24		
-9	1/4-20	-15	1/2-13		



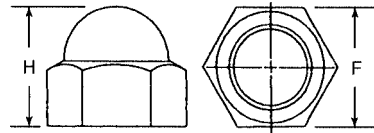
Thread Size	H	B	C	D
4	.280	.317	.039	.045
6	.334	.348	.044	.051
8	.378	.381	.049	.059
10	.357	.412	.056	.068
1/4	.370	.478	.070	.088
5/16	.437	.562	.070	.095
3/8	.480	.625	.080	.100
1/2	.625	.750	.090	.125
5/8	.825	1.000	.110	.140
3/4	.890	1.125	.125	.180

Tolerances: +/- .015

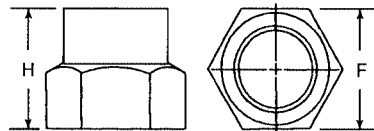
CAP NUTS

Part No. DF224 - (Size Code No.) - (Material Code No.)

Size Code No.	Thread Size	Size Code No.	Thread Size	Size Code No.	Thread Size
-1	4-40	-9	1/4-20	-16	1/2-20
-3	6-32	-10	1/4-28	-17	9/16-18
-4	6-40	-11	5/16-18	-18	5/8-11
-5	8-32	-12	5/16-24	-19	5/8-18
-6	10-24	-13	3/8-16	-20	3/4-10
-7	10-32	-14	3/8-24	-23	1-8
-8	12-24	-15	1/2-13	-24	1-12



Thread Sizes 4 thru 9/16



Thread Sizes 5/8 thru 1

Thread Size	F max.	F min.	H
4	.250	.242	.280
6	.312	.302	.340
8	.312	.302	.340
10	.375	.362	.410
12	.375	.362	.410
1/4	.437	.428	.470
5/16	.500	.489	.530
3/8	.562	.551	.620
1/2	.750	.736	.810
9/16	.875	.861	.940
5/8	.937	.922	1.000
3/4	1.062	1.045	1.160
1	1.437	1.417	1.550

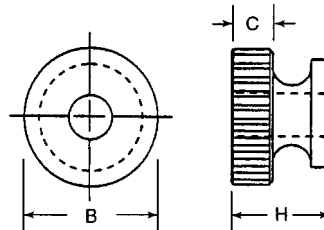
Tolerances: +/- .015

Cap Nuts are made to the American National Standard.

KNURLED THUMB NUTS

Part No. DF225 - (Size Code No.) - (Material Code No.)

Size Code No.	Thread Size	Size Code No.	Thread Size	Size Code No.	Thread Size
-1	4-40	-8	12-24	-15	1/2-13
-2	5-40	-9	1/4-20	-16	1/2-20
-3	6-32	-10	1/4-28	-18	5/8-11
-4	6-40	-11	5/16-18	-19	5/8-18
-5	8-32	-12	5/16-24		
-6	10-24	-13	3/8-16		
-7	10-32	-14	3/8-24		



Thread Size	B	H	C
4	.300	.280	.120
6	.360	.275	.125
8	.425	.305	.140
10	.425	.325	.140
1/4	.520	.365	.155
5/16	.612	.400	.170
3/8	.625	.500	.187
1/2	.750	.625	.250
5/8	1.000	.750	.300

Tolerances: +/- .015

MACHINED HIGH TECHNOLOGY PLASTIC METRIC NUTS

*Available in other materials. See materials list in index.
Other sizes available on request.

*Available in the following materials:

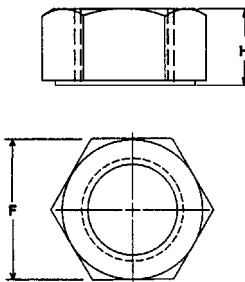
Material Code No.	Material Name	Material Code No.	Material Name	Material Code No.	Material Name	Material Code No.	Material Name
-3	Lexan®, (clear)	-27	PVC	-40	PFA, (Teflon®)	-195	Nylon 46, 30% Glass-filled, Flame Retardant, Heat Stabilized
-4	Lexan®, (black)	-28	CPVC	-41	Halar®	-213	VespeI®
-5	Ultem® 1000	-29	Teflon®	-60	Nylon 6/6, 30% Short Glass-filled	-226	Radel® A200, Polyethersulfone
-11	Polypropylene	-30	Tefzel®	-64	Delrin®, 25% Short Glass-filled	-228	Radel® AG330, 30% Glass-filled
-13	Polyethylene	-32	PCTFE	-77	Ultem® 2300, (natural)	-229	Radel® R5000, Polyphenylsulfone
-14	ABS	-33	Polysulfone	-78	Nylon 6/6, (black)	-272	PVC, (white)
-15	PEEK™	-35	Noryl®	-194	Nylon 46, 30% Glass-filled, Heat Stabilized	-273	PVC, (black)
-18	Nylon 6/6, (natural)	-37	PVDF				
-23	Nylon Super Tough	-38	Fiber Glass G10				
-24	Delrin®, (white)	-39	UHMW®				

ALL DIMENSIONS GIVEN IN MILLIMETERS

METRIC HEX NUTS

Part No. G114 - (Size Code No.) - (Material Code No.)

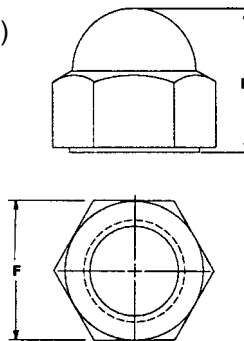
Size Code No.	Thread Size	F	H
-1	M2 x 0,4	4,00	1,60
-2	M2,5 x 0,45	5,00	2,00
-3	M3 x 0,5	5,50	2,40
-5	M4 x 0,7	7,00	3,20
-6	M5 x 0,8	8,00	4,00
-7	M6 x 1,0	10,00	5,00
-8	M8 x 1,25	13,00	6,50
-9	M10 x 1,5	17,00	8,00
-10	M12 x 1,75	19,00	10,00



METRIC CAP NUTS

Part No. G115 - (Size Code No.) - (Material Code No.)

Size Code No.	Thread Size	F	H
-2	M4 x 0,7	7,00	8,00
-3	M5 x 0,8	8,00	10,00
-4	M6 x 1,0	10,00	12,00
-5	M8 x 1,25	13,00	15,00
-6	M10 x 1,5	16/17,00	18,00
-7	M12 x 1,75	18/19,00	22,00



Parts are made to DIN dimensions. Materials are selected by customer.